

**Top Notes for HumanGood East Form 990**  
**Year Ended December 31, 2020**  
**Filed on 2020 Tax Forms**

These top notes are to be read in conjunction with the Form 990 for HumanGood East formerly known as Philadelphia Presbytery Homes and Services for the Aging (“HumanGood East”). Following these top notes is an organization chart for HumanGood that is highlighted to show HumanGood East’s relationship to the affiliated group. Each legal entity has a separate Form 990. As such, reviewing just the Form 990 for the legal entity provides an incomplete reflection of total activities. HumanGood East is a governance organization. It has no employees.

HumanGood’s affiliation with Presby’s Inspired Life became effective June 30, 2019. On that date, the corporate parent of Presby’s Inspired Life (Philadelphia Presbyterian Homes and Services for the Aging dba Presby’s Inspired Life) was renamed as HumanGood East. Separate returns are prepared for HumanGood East and its subsidiaries; however, because of the affiliate relationship and shared management team, more affiliates are disclosed on each return.

The Form 990 must be submitted electronically and the software supporting form submittal provides a limited format in which to describe the entire organizational structure of HumanGood East and HumanGood East’s parent, HumanGood.

The following comments will hopefully assist readers in understanding the various forms that comprise the tax filing:

Form 990 Part IV

This part asks 38 questions which if answered “yes” often trigger a requirement to provide additional information through supplemental schedules.

Question 12 asks if the legal entity HumanGood East obtained its own separate audit. The legal entity HumanGood East is included in the annual audit of HumanGood East FKA Philadelphia Presbytery Homes and Services for the Aging and Subsidiaries dba Presby’s Inspired Life (“HumanGood East and Subsidiaries”), so while it is audited, it is not audited on a stand-alone basis. This is also the case for the following affiliates:

- The Presbyterian Home at 58<sup>th</sup> Street, Inc.
- Bala Presbyterian Home Foundation
- HumanGood Pennsylvania
- HumanGood East Affordable Housing Communities

Each of these entities has been included in the annual audit of HumanGood East and Subsidiaries, and their information is included in the supplementary combining schedules accompanying the annual audit. Each of these entities also has their own separate Form 990.

Question 23 requires the preparation of a supplemental compensation Schedule J if there are any employees being paid over \$150,000. In addition, the supplemental schedule is required if any officers of HumanGood East are employed by a related organization. As a result, HumanGood NorCal, HumanGood

SoCal and HumanGood Pennsylvania employees that serve in this capacity are disclosed, even though their compensation is not paid by HumanGood East.

Question 34 requires the disclosure of affiliated entities on a supplemental Schedule R. The manner in which affiliates are required to be disclosed is awkward and we believe affiliates are better presented in an organizational chart format following these top notes.

#### Form 990 Part V

This part makes inquiries about other IRS filings and tax compliance. HumanGood East is in compliance with tax regulations.

#### Form 990 Part VI

This part makes inquiries about governance and other policies. Most of this information is provided on supplemental Schedule O. Section A question 1b asks for voting members of the government body who are independent. Based on our tax professionals' interpretation, only board members who did not receive stipends during the year are listed here as independent. The only board members receiving stipends are the seven members serving at the highest level of the organization chart.

#### Form 990 Part VII

This part includes compensation disclosure information which is also included in more detail on Schedule J. This schedule is required to be prepared on a calendar year basis and is consistent with the period for the Form 990 for 2020.

#### Form 990 Parts VIII, IX and X

These parts of the Form 990 are the core financial statements in a slightly different format than the annual audit. To more directly associate this Form 990 with HumanGood East and Subsidiaries' audit for the year ended December 31, 2020, Part IX of the Form 990 should be compared with the column entitled "HGE" on page 35 of the audited financial statements. Part X of the Form 990 should be compared with the column entitled "HGE" on pages 33 and 34 of the audited financial statements.

#### Schedule D

This schedule provides additional disclosure for selected balance sheet accounts for the legal entity.

#### Schedule J

This schedule provides additional compensation information. This schedule is included in many of HumanGood East's affiliates returns as well. It is important to note that compensation paid by the organization is listed on line (i) for each individual or if it is paid by an affiliated organization, it is listed on line (ii).

While management team members are paid by one legal entity, the related costs are allocated equitably among the affiliated entities. Compensation listed on schedule J is for calendar year 2020.

#### Schedule O

Contains supplemental disclosures required by other forms and Schedules. The order of the disclosures is determined by the tax return software used by HumanGood East's tax advisor.

### Schedule R

This schedule details related organizations in a different format than the attached organization chart. In addition, Part V of the form identifies transactions with related organizations.

### Additional Disclosure

HumanGood East's audited annual financial statements and other data are posted on HumanGood's website at [www.humangood.org](http://www.humangood.org). In addition, a wealth of financial information is available from the website of the Municipal Securities Rulemaking Board (MSRB), Electronic Municipal Market Access, [emma.msrb.org](http://emma.msrb.org), using one of the following HGPA CUSIP numbers:

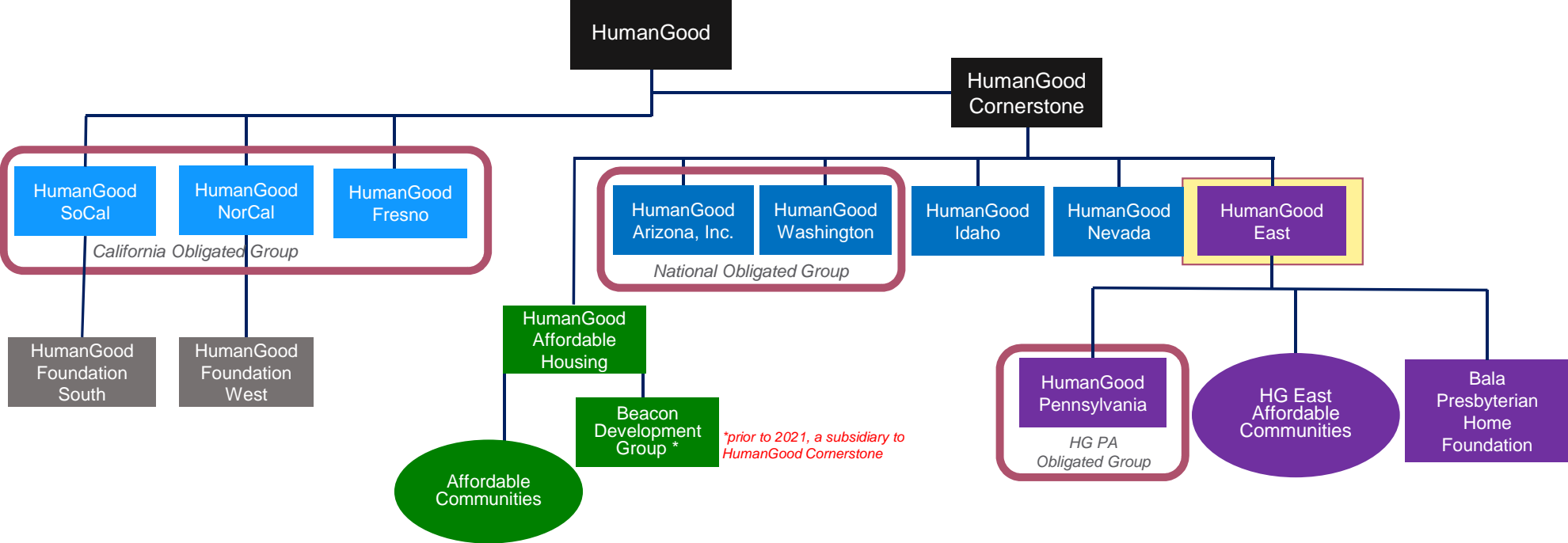
613603XC8

613603XD6

613603XE4

After entering one of the CUSIP numbers, information can be selected for review from the "Continuing Disclosure" tab.

# human good



Form **990**

**Return of Organization Exempt From Income Tax**

OMB No. 1545-0047

Under section 501(c), 527, or 4947(a)(1) of the Internal Revenue Code (except private foundations)

**2020**

Department of the Treasury  
Internal Revenue Service

▶ Do not enter social security numbers on this form as it may be made public.  
▶ Go to [www.irs.gov/Form990](http://www.irs.gov/Form990) for instructions and the latest information.

Open to Public Inspection

**A** For the **2020** calendar year, or tax year beginning and ending

<b>B</b> Check if applicable: Address change Name change Initial return Final return/terminated Amended return Application pending	<b>C</b> Name of organization <b>HUMANGOOD EAST FKA PHILA. PRESBYTERY HOMES AND SVC. FOR THE AGING</b>		<b>D</b> Employer identification number <b>23-2828862</b>
	Doing business as		<b>E</b> Telephone number <b>(610) 834-1001</b>
	Number and street (or P.O. box if mail is not delivered to street address)	Room/suite	
	City or town, state or province, country, and ZIP or foreign postal code <b>LAFAYETTE HILL, PA 19444</b>		<b>G</b> Gross receipts \$ <b>42,684.</b>
<b>F</b> Name and address of principal officer: <b>JOHN H. COCHRANE, III</b> <b>516 BURCHETT STREET, GLENDALE, CA 91203</b>			<b>H(a)</b> Is this a group return for subordinates? ..... <input type="checkbox"/> Yes <input checked="" type="checkbox"/> No <b>H(b)</b> Are all subordinates included? <b>Yes</b> <input type="checkbox"/> No <input checked="" type="checkbox"/> No If "No," attach a list. See instructions <b>H(c)</b> Group exemption number ▶
<b>I</b> Tax-exempt status: <input checked="" type="checkbox"/> 501(c)(3) 501(c) ( ) ◀ (insert no.) 4947(a)(1) or 527			
<b>J</b> Website: ▶ <b>WWW.HUMANGOOD.ORG</b>			
<b>K</b> Form of organization: <input checked="" type="checkbox"/> Corporation Trust Association Other ▶			<b>L</b> Year of formation: <b>1995</b> <b>M</b> State of legal domicile: <b>PA</b>

**Part I Summary**

<b>Activities &amp; Governance</b>	<b>1</b> Briefly describe the organization's mission or most significant activities: <b>PARENT ENTITY FOR 28 ENTITIES PROVIDING HOUSING AND SERVICES TO OLDER ADULTS.</b>		
	<b>2</b> Check this box <input type="checkbox"/> if the organization discontinued its operations or disposed of more than 25% of its net assets.		
	<b>3</b> Number of voting members of the governing body (Part VI, line 1a)	<b>3</b>	<b>9</b>
	<b>4</b> Number of independent voting members of the governing body (Part VI, line 1b)	<b>4</b>	<b>5</b>
	<b>5</b> Total number of individuals employed in calendar year 2020 (Part V, line 2a)	<b>5</b>	<b>0</b>
	<b>6</b> Total number of volunteers (estimate if necessary)	<b>6</b>	<b>5</b>
	<b>7 a</b> Total unrelated business revenue from Part VIII, column (C), line 12	<b>7a</b>	<b>0.</b>
<b>b</b> Net unrelated business taxable income from Form 990-T, Part I, line 11	<b>7b</b>	<b>0.</b>	
<b>Revenue</b>	<b>8</b> Contributions and grants (Part VIII, line 1h)	<b>Prior Year</b> 25,000.	<b>Current Year</b> 0.
	<b>9</b> Program service revenue (Part VIII, line 2g)	0.	0.
	<b>10</b> Investment income (Part VIII, column (A), lines 3, 4, and 7d)	40,998.	42,684.
	<b>11</b> Other revenue (Part VIII, column (A), lines 5, 6d, 8c, 9c, 10c, and 11e)	0.	0.
	<b>12</b> Total revenue - add lines 8 through 11 (must equal Part VIII, column (A), line 12)	65,998.	42,684.
	<b>Expenses</b>	<b>13</b> Grants and similar amounts paid (Part IX, column (A), lines 1-3)	0.
<b>14</b> Benefits paid to or for members (Part IX, column (A), line 4)		0.	0.
<b>15</b> Salaries, other compensation, employee benefits (Part IX, column (A), lines 5-10)		0.	0.
<b>16a</b> Professional fundraising fees (Part IX, column (A), line 11e)		0.	0.
<b>b</b> Total fundraising expenses (Part IX, column (D), line 25) ▶ 0.			
<b>17</b> Other expenses (Part IX, column (A), lines 11a-11d, 11f-24e)		20,778.	21,753.
<b>18</b> Total expenses. Add lines 13-17 (must equal Part IX, column (A), line 25)		20,778.	21,753.
<b>19</b> Revenue less expenses. Subtract line 18 from line 12	45,220.	20,931.	
<b>Net Assets or Fund Balances</b>	<b>20</b> Total assets (Part X, line 16)	<b>Beginning of Current Year</b> 10,372,563.	<b>End of Year</b> 10,416,682.
	<b>21</b> Total liabilities (Part X, line 26)	9,328,330.	9,351,518.
	<b>22</b> Net assets or fund balances. Subtract line 21 from line 20	1,044,233.	1,065,164.

**Part II Signature Block**

Under penalties of perjury, I declare that I have examined this return, including accompanying schedules and statements, and to the best of my knowledge and belief, it is true, correct, and complete. Declaration of preparer (other than officer) is based on all information of which preparer has any knowledge.

<b>Sign Here</b>	Signature of officer	Date		
	<b>ANDREW MCDONALD, CHIEF FINANCIAL OFFICER</b> Type or print name and title			
<b>Paid Preparer Use Only</b>	Print/Type preparer's name <b>KERRI N. BOGDA, CPA</b>	Preparer's signature <i>Kerri Bogda</i>	Date <b>11/09/21</b>	Check if self-employed <input checked="" type="checkbox"/> PTIN <b>P00760402</b>
	Firm's name ▶ <b>BAKER TILLY US, LLP</b>	Firm's EIN ▶ <b>39-0859910</b>	Phone no. <b>717.740.4863</b>	
Firm's address ▶ <b>1570 FRUITVILLE PIKE, SUITE 400 LANCASTER, PA 17601</b>				

May the IRS discuss this return with the preparer shown above? See instructions  Yes  No

**Part III Statement of Program Service Accomplishments**

Check if Schedule O contains a response or note to any line in this Part III

**1** Briefly describe the organization's mission:  
**THE MISSION OF THE ORGANIZATION IS TO HELP OLDER ADULTS LIVE THEIR BEST LIVES POSSIBLE, HOWEVER THEY DEFINE IT, AND TO DELIVER PRODUCTS AND SERVICES THAT OFFER OPPORTUNITIES TO PURSUE ENGAGED, PURPOSEFUL LIVES.**

**2** Did the organization undertake any significant program services during the year which were not listed on the prior Form 990 or 990-EZ?  Yes  No  
If "Yes," describe these new services on Schedule O.

**3** Did the organization cease conducting, or make significant changes in how it conducts, any program services?  Yes  No  
If "Yes," describe these changes on Schedule O.

**4** Describe the organization's program service accomplishments for each of its three largest program services, as measured by expenses. Section 501(c)(3) and 501(c)(4) organizations are required to report the amount of grants and allocations to others, the total expenses, and revenue, if any, for each program service reported.

**4a** (Code: \_\_\_\_\_) (Expenses \$ 0. including grants of \$ 0.) (Revenue \$ 0.)  
**THE ORGANIZATION SERVES AS THE PARENT ORGANIZATION FOR HUMANGOOD PENNSYLVANIA FKA PHILADELPHIA PRESBYTERY HOMES, INC. A MARKET RATE SENIOR LIVING PROVIDER WITH THREE COMMUNITIES PROVIDING INDEPENDENT LIVING, PERSONAL CARE AND SKILLED NURSING SERVICES, 17 AFFORDABLE HOUSING COMMUNITIES, A FOUNDATION AND SEVERAL OTHER ENTITIES FOCUSED ON SENIORS WITHIN THE GREATER PHILADELPHIA AREA.**

**4b** (Code: \_\_\_\_\_) (Expenses \$ \_\_\_\_\_ including grants of \$ \_\_\_\_\_) (Revenue \$ \_\_\_\_\_)

**4c** (Code: \_\_\_\_\_) (Expenses \$ \_\_\_\_\_ including grants of \$ \_\_\_\_\_) (Revenue \$ \_\_\_\_\_)

**4d** Other program services (Describe on Schedule O.)  
(Expenses \$ \_\_\_\_\_ including grants of \$ \_\_\_\_\_) (Revenue \$ \_\_\_\_\_)

**4e** Total program service expenses **▶**

**HUMANGOOD EAST FKA PHILA. PRESBYTERY  
HOMES AND SVC. FOR THE AGING**

**Part IV Checklist of Required Schedules**

		Yes	No
<b>1</b> Is the organization described in section 501(c)(3) or 4947(a)(1) (other than a private foundation)? <i>If "Yes," complete Schedule A</i> .....	<b>1</b>	<b>X</b>	
<b>2</b> Is the organization required to complete <i>Schedule B, Schedule of Contributors</i> ? .....	<b>2</b>		<b>X</b>
<b>3</b> Did the organization engage in direct or indirect political campaign activities on behalf of or in opposition to candidates for public office? <i>If "Yes," complete Schedule C, Part I</i> .....	<b>3</b>		<b>X</b>
<b>4 Section 501(c)(3) organizations.</b> Did the organization engage in lobbying activities, or have a section 501(h) election in effect during the tax year? <i>If "Yes," complete Schedule C, Part II</i> .....	<b>4</b>		<b>X</b>
<b>5</b> Is the organization a section 501(c)(4), 501(c)(5), or 501(c)(6) organization that receives membership dues, assessments, or similar amounts as defined in Revenue Procedure 98-19? <i>If "Yes," complete Schedule C, Part III</i> .....	<b>5</b>		<b>X</b>
<b>6</b> Did the organization maintain any donor advised funds or any similar funds or accounts for which donors have the right to provide advice on the distribution or investment of amounts in such funds or accounts? <i>If "Yes," complete Schedule D, Part I</i> .....	<b>6</b>		<b>X</b>
<b>7</b> Did the organization receive or hold a conservation easement, including easements to preserve open space, the environment, historic land areas, or historic structures? <i>If "Yes," complete Schedule D, Part II</i> .....	<b>7</b>		<b>X</b>
<b>8</b> Did the organization maintain collections of works of art, historical treasures, or other similar assets? <i>If "Yes," complete Schedule D, Part III</i> .....	<b>8</b>		<b>X</b>
<b>9</b> Did the organization report an amount in Part X, line 21, for escrow or custodial account liability, serve as a custodian for amounts not listed in Part X; or provide credit counseling, debt management, credit repair, or debt negotiation services? <i>If "Yes," complete Schedule D, Part IV</i> .....	<b>9</b>		<b>X</b>
<b>10</b> Did the organization, directly or through a related organization, hold assets in donor-restricted endowments or in quasi endowments? <i>If "Yes," complete Schedule D, Part V</i> .....	<b>10</b>		<b>X</b>
<b>11</b> If the organization's answer to any of the following questions is "Yes," then complete Schedule D, Parts VI, VII, VIII, IX, or X as applicable.			
<b>a</b> Did the organization report an amount for land, buildings, and equipment in Part X, line 10? <i>If "Yes," complete Schedule D, Part VI</i> .....	<b>11a</b>		<b>X</b>
<b>b</b> Did the organization report an amount for investments - other securities in Part X, line 12, that is 5% or more of its total assets reported in Part X, line 16? <i>If "Yes," complete Schedule D, Part VII</i> .....	<b>11b</b>	<b>X</b>	
<b>c</b> Did the organization report an amount for investments - program related in Part X, line 13, that is 5% or more of its total assets reported in Part X, line 16? <i>If "Yes," complete Schedule D, Part VIII</i> .....	<b>11c</b>		<b>X</b>
<b>d</b> Did the organization report an amount for other assets in Part X, line 15, that is 5% or more of its total assets reported in Part X, line 16? <i>If "Yes," complete Schedule D, Part IX</i> .....	<b>11d</b>	<b>X</b>	
<b>e</b> Did the organization report an amount for other liabilities in Part X, line 25? <i>If "Yes," complete Schedule D, Part X</i> .....	<b>11e</b>	<b>X</b>	
<b>f</b> Did the organization's separate or consolidated financial statements for the tax year include a footnote that addresses the organization's liability for uncertain tax positions under FIN 48 (ASC 740)? <i>If "Yes," complete Schedule D, Part X</i> .....	<b>11f</b>	<b>X</b>	
<b>12a</b> Did the organization obtain separate, independent audited financial statements for the tax year? <i>If "Yes," complete Schedule D, Parts XI and XII</i> .....	<b>12a</b>		<b>X</b>
<b>b</b> Was the organization included in consolidated, independent audited financial statements for the tax year? <i>If "Yes," and if the organization answered "No" to line 12a, then completing Schedule D, Parts XI and XII is optional</i> .....	<b>12b</b>	<b>X</b>	
<b>13</b> Is the organization a school described in section 170(b)(1)(A)(ii)? <i>If "Yes," complete Schedule E</i> .....	<b>13</b>		<b>X</b>
<b>14a</b> Did the organization maintain an office, employees, or agents outside of the United States? .....	<b>14a</b>		<b>X</b>
<b>b</b> Did the organization have aggregate revenues or expenses of more than \$10,000 from grantmaking, fundraising, business, investment, and program service activities outside the United States, or aggregate foreign investments valued at \$100,000 or more? <i>If "Yes," complete Schedule F, Parts I and IV</i> .....	<b>14b</b>		<b>X</b>
<b>15</b> Did the organization report on Part IX, column (A), line 3, more than \$5,000 of grants or other assistance to or for any foreign organization? <i>If "Yes," complete Schedule F, Parts II and IV</i> .....	<b>15</b>		<b>X</b>
<b>16</b> Did the organization report on Part IX, column (A), line 3, more than \$5,000 of aggregate grants or other assistance to or for foreign individuals? <i>If "Yes," complete Schedule F, Parts III and IV</i> .....	<b>16</b>		<b>X</b>
<b>17</b> Did the organization report a total of more than \$15,000 of expenses for professional fundraising services on Part IX, column (A), lines 6 and 11e? <i>If "Yes," complete Schedule G, Part I</i> .....	<b>17</b>		<b>X</b>
<b>18</b> Did the organization report more than \$15,000 total of fundraising event gross income and contributions on Part VIII, lines 1c and 8a? <i>If "Yes," complete Schedule G, Part II</i> .....	<b>18</b>		<b>X</b>
<b>19</b> Did the organization report more than \$15,000 of gross income from gaming activities on Part VIII, line 9a? <i>If "Yes," complete Schedule G, Part III</i> .....	<b>19</b>		<b>X</b>
<b>20a</b> Did the organization operate one or more hospital facilities? <i>If "Yes," complete Schedule H</i> .....	<b>20a</b>		<b>X</b>
<b>b</b> If "Yes" to line 20a, did the organization attach a copy of its audited financial statements to this return? .....	<b>20b</b>		
<b>21</b> Did the organization report more than \$5,000 of grants or other assistance to any domestic organization or domestic government on Part IX, column (A), line 1? <i>If "Yes," complete Schedule I, Parts I and II</i> .....	<b>21</b>		<b>X</b>

HUMANGOOD EAST FKA PHILA. PRESBYTERY  
 HOMES AND SVC. FOR THE AGING

**Part IV Checklist of Required Schedules** (continued)

		Yes	No
22	Did the organization report more than \$5,000 of grants or other assistance to or for domestic individuals on Part IX, column (A), line 2? <i>If "Yes," complete Schedule I, Parts I and III</i> .....		X
23	Did the organization answer "Yes" to Part VII, Section A, line 3, 4, or 5 about compensation of the organization's current and former officers, directors, trustees, key employees, and highest compensated employees? <i>If "Yes," complete Schedule J</i> .....	X	
24a	Did the organization have a tax-exempt bond issue with an outstanding principal amount of more than \$100,000 as of the last day of the year, that was issued after December 31, 2002? <i>If "Yes," answer lines 24b through 24d and complete Schedule K. If "No," go to line 25a</i> .....		X
b	Did the organization invest any proceeds of tax-exempt bonds beyond a temporary period exception? .....		
c	Did the organization maintain an escrow account other than a refunding escrow at any time during the year to defease any tax-exempt bonds? .....		
d	Did the organization act as an "on behalf of" issuer for bonds outstanding at any time during the year? .....		
25a	<b>Section 501(c)(3), 501(c)(4), and 501(c)(29) organizations.</b> Did the organization engage in an excess benefit transaction with a disqualified person during the year? <i>If "Yes," complete Schedule L, Part I</i> .....		X
b	Is the organization aware that it engaged in an excess benefit transaction with a disqualified person in a prior year, and that the transaction has not been reported on any of the organization's prior Forms 990 or 990-EZ? <i>If "Yes," complete Schedule L, Part I</i> .....		X
26	Did the organization report any amount on Part X, line 5 or 22, for receivables from or payables to any current or former officer, director, trustee, key employee, creator or founder, substantial contributor, or 35% controlled entity or family member of any of these persons? <i>If "Yes," complete Schedule L, Part II</i> .....		X
27	Did the organization provide a grant or other assistance to any current or former officer, director, trustee, key employee, creator or founder, substantial contributor or employee thereof, a grant selection committee member, or to a 35% controlled entity (including an employee thereof) or family member of any of these persons? <i>If "Yes," complete Schedule L, Part III</i> .....		X
28	Was the organization a party to a business transaction with one of the following parties (see Schedule L, Part IV instructions, for applicable filing thresholds, conditions, and exceptions):		
a	A current or former officer, director, trustee, key employee, creator or founder, or substantial contributor? <i>If "Yes," complete Schedule L, Part IV</i> .....		X
b	A family member of any individual described in line 28a? <i>If "Yes," complete Schedule L, Part IV</i> .....		X
c	A 35% controlled entity of one or more individuals and/or organizations described in lines 28a or 28b? <i>If "Yes," complete Schedule L, Part IV</i> .....		X
29	Did the organization receive more than \$25,000 in non-cash contributions? <i>If "Yes," complete Schedule M</i> .....		X
30	Did the organization receive contributions of art, historical treasures, or other similar assets, or qualified conservation contributions? <i>If "Yes," complete Schedule M</i> .....		X
31	Did the organization liquidate, terminate, or dissolve and cease operations? <i>If "Yes," complete Schedule N, Part I</i> .....		X
32	Did the organization sell, exchange, dispose of, or transfer more than 25% of its net assets? <i>If "Yes," complete Schedule N, Part II</i> .....		X
33	Did the organization own 100% of an entity disregarded as separate from the organization under Regulations sections 301.7701-2 and 301.7701-3? <i>If "Yes," complete Schedule R, Part I</i> .....		X
34	Was the organization related to any tax-exempt or taxable entity? <i>If "Yes," complete Schedule R, Part II, III, or IV, and Part V, line 1</i> .....	X	
35a	Did the organization have a controlled entity within the meaning of section 512(b)(13)? .....	X	
b	If "Yes" to line 35a, did the organization receive any payment from or engage in any transaction with a controlled entity within the meaning of section 512(b)(13)? <i>If "Yes," complete Schedule R, Part V, line 2</i> .....		X
36	<b>Section 501(c)(3) organizations.</b> Did the organization make any transfers to an exempt non-charitable related organization? <i>If "Yes," complete Schedule R, Part V, line 2</i> .....		X
37	Did the organization conduct more than 5% of its activities through an entity that is not a related organization and that is treated as a partnership for federal income tax purposes? <i>If "Yes," complete Schedule R, Part VI</i> .....		X
38	Did the organization complete Schedule O and provide explanations in Schedule O for Part VI, lines 11b and 19? .....	X	

**Note:** All Form 990 filers are required to complete Schedule O

**Part V Statements Regarding Other IRS Filings and Tax Compliance**

Check if Schedule O contains a response or note to any line in this Part V

		Yes	No
1a	Enter the number reported in Box 3 of Form 1096. Enter -0- if not applicable .....		
b	Enter the number of Forms W-2G included in line 1a. Enter -0- if not applicable .....		
c	Did the organization comply with backup withholding rules for reportable payments to vendors and reportable gaming (gambling) winnings to prize winners? .....		



HUMANGOOD EAST FKA PHILA. PRESBYTERY  
 HOMES AND SVC. FOR THE AGING

**Part V** Statements Regarding Other IRS Filings and Tax Compliance (continued)

		Yes	No
<b>2a</b>	Enter the number of employees reported on Form W-3, Transmittal of Wage and Tax Statements, filed for the calendar year ending with or within the year covered by this return		
	2a		0
<b>b</b>	If at least one is reported on line 2a, did the organization file all required federal employment tax returns? <b>Note:</b> If the sum of lines 1a and 2a is greater than 250, you may be required to e-file (see instructions)	<b>2b</b>	
<b>3a</b>	Did the organization have unrelated business gross income of \$1,000 or more during the year?	<b>3a</b>	X
<b>b</b>	If "Yes," has it filed a Form 990-T for this year? If "No" to line 3b, provide an explanation on Schedule O	<b>3b</b>	
<b>4a</b>	At any time during the calendar year, did the organization have an interest in, or a signature or other authority over, a financial account in a foreign country (such as a bank account, securities account, or other financial account)?	<b>4a</b>	X
<b>b</b>	If "Yes," enter the name of the foreign country See instructions for filing requirements for FinCEN Form 114, Report of Foreign Bank and Financial Accounts (FBAR).		
<b>5a</b>	Was the organization a party to a prohibited tax shelter transaction at any time during the tax year?	<b>5a</b>	X
<b>b</b>	Did any taxable party notify the organization that it was or is a party to a prohibited tax shelter transaction?	<b>5b</b>	X
<b>c</b>	If "Yes" to line 5a or 5b, did the organization file Form 8886-T?	<b>5c</b>	
<b>6a</b>	Does the organization have annual gross receipts that are normally greater than \$100,000, and did the organization solicit any contributions that were not tax deductible as charitable contributions?	<b>6a</b>	X
<b>b</b>	If "Yes," did the organization include with every solicitation an express statement that such contributions or gifts were not tax deductible?	<b>6b</b>	
<b>7</b>	<b>Organizations that may receive deductible contributions under section 170(c).</b>		
<b>a</b>	Did the organization receive a payment in excess of \$75 made partly as a contribution and partly for goods and services provided to the payor?	<b>7a</b>	X
<b>b</b>	If "Yes," did the organization notify the donor of the value of the goods or services provided?	<b>7b</b>	
<b>c</b>	Did the organization sell, exchange, or otherwise dispose of tangible personal property for which it was required to file Form 8282?	<b>7c</b>	X
<b>d</b>	If "Yes," indicate the number of Forms 8282 filed during the year	<b>7d</b>	
<b>e</b>	Did the organization receive any funds, directly or indirectly, to pay premiums on a personal benefit contract?	<b>7e</b>	X
<b>f</b>	Did the organization, during the year, pay premiums, directly or indirectly, on a personal benefit contract?	<b>7f</b>	X
<b>g</b>	If the organization received a contribution of qualified intellectual property, did the organization file Form 8899 as required?	<b>7g</b>	
<b>h</b>	If the organization received a contribution of cars, boats, airplanes, or other vehicles, did the organization file a Form 1098-C?	<b>7h</b>	
<b>8</b>	<b>Sponsoring organizations maintaining donor advised funds.</b> Did a donor advised fund maintained by the sponsoring organization have excess business holdings at any time during the year?	<b>8</b>	
<b>9</b>	<b>Sponsoring organizations maintaining donor advised funds.</b>		
<b>a</b>	Did the sponsoring organization make any taxable distributions under section 4966?	<b>9a</b>	
<b>b</b>	Did the sponsoring organization make a distribution to a donor, donor advisor, or related person?	<b>9b</b>	
<b>10</b>	<b>Section 501(c)(7) organizations.</b> Enter:		
<b>a</b>	Initiation fees and capital contributions included on Part VIII, line 12	<b>10a</b>	
<b>b</b>	Gross receipts, included on Form 990, Part VIII, line 12, for public use of club facilities	<b>10b</b>	
<b>11</b>	<b>Section 501(c)(12) organizations.</b> Enter:		
<b>a</b>	Gross income from members or shareholders	<b>11a</b>	
<b>b</b>	Gross income from other sources (Do not net amounts due or paid to other sources against amounts due or received from them.)	<b>11b</b>	
<b>12a</b>	<b>Section 4947(a)(1) non-exempt charitable trusts.</b> Is the organization filing Form 990 in lieu of Form 1041?	<b>12a</b>	
<b>b</b>	If "Yes," enter the amount of tax-exempt interest received or accrued during the year	<b>12b</b>	
<b>13</b>	<b>Section 501(c)(29) qualified nonprofit health insurance issuers.</b>		
<b>a</b>	Is the organization licensed to issue qualified health plans in more than one state? <b>Note:</b> See the instructions for additional information the organization must report on Schedule O.	<b>13a</b>	
<b>b</b>	Enter the amount of reserves the organization is required to maintain by the states in which the organization is licensed to issue qualified health plans	<b>13b</b>	
<b>c</b>	Enter the amount of reserves on hand	<b>13c</b>	
<b>14a</b>	Did the organization receive any payments for indoor tanning services during the tax year?	<b>14a</b>	X
<b>b</b>	If "Yes," has it filed a Form 720 to report these payments? If "No," provide an explanation on Schedule O	<b>14b</b>	
<b>15</b>	Is the organization subject to the section 4960 tax on payment(s) of more than \$1,000,000 in remuneration or excess parachute payment(s) during the year? If "Yes," see instructions and file Form 4720, Schedule N.	<b>15</b>	X
<b>16</b>	Is the organization an educational institution subject to the section 4968 excise tax on net investment income? If "Yes," complete Form 4720, Schedule O.	<b>16</b>	X

**Part VI Governance, Management, and Disclosure** For each "Yes" response to lines 2 through 7b below, and for a "No" response to line 8a, 8b, or 10b below, describe the circumstances, processes, or changes on Schedule O. See instructions.

Check if Schedule O contains a response or note to any line in this Part VI

**Section A. Governing Body and Management**

		Yes	No
<b>1a</b>	Enter the number of voting members of the governing body at the end of the tax year If there are material differences in voting rights among members of the governing body, or if the governing body delegated broad authority to an executive committee or similar committee, explain on Schedule O.		
<b>1b</b>	Enter the number of voting members included on line 1a, above, who are independent		
<b>2</b>	Did any officer, director, trustee, or key employee have a family relationship or a business relationship with any other officer, director, trustee, or key employee?		X
<b>3</b>	Did the organization delegate control over management duties customarily performed by or under the direct supervision of officers, directors, trustees, or key employees to a management company or other person?		X
<b>4</b>	Did the organization make any significant changes to its governing documents since the prior Form 990 was filed?		X
<b>5</b>	Did the organization become aware during the year of a significant diversion of the organization's assets?		X
<b>6</b>	Did the organization have members or stockholders?	X	
<b>7a</b>	Did the organization have members, stockholders, or other persons who had the power to elect or appoint one or more members of the governing body?	X	
<b>7b</b>	Are any governance decisions of the organization reserved to (or subject to approval by) members, stockholders, or persons other than the governing body?	X	
<b>8</b>	Did the organization contemporaneously document the meetings held or written actions undertaken during the year by the following:		
<b>8a</b>	The governing body?	X	
<b>8b</b>	Each committee with authority to act on behalf of the governing body?	X	
<b>9</b>	Is there any officer, director, trustee, or key employee listed in Part VII, Section A, who cannot be reached at the organization's mailing address? If "Yes," provide the names and addresses on Schedule O		X

**Section B. Policies** (This Section B requests information about policies not required by the Internal Revenue Code.)

		Yes	No
<b>10a</b>	Did the organization have local chapters, branches, or affiliates?		X
<b>10b</b>	If "Yes," did the organization have written policies and procedures governing the activities of such chapters, affiliates, and branches to ensure their operations are consistent with the organization's exempt purposes?		
<b>11a</b>	Has the organization provided a complete copy of this Form 990 to all members of its governing body before filing the form?	X	
<b>11b</b>	Describe in Schedule O the process, if any, used by the organization to review this Form 990.		
<b>12a</b>	Did the organization have a written conflict of interest policy? If "No," go to line 13	X	
<b>12b</b>	Were officers, directors, or trustees, and key employees required to disclose annually interests that could give rise to conflicts?	X	
<b>12c</b>	Did the organization regularly and consistently monitor and enforce compliance with the policy? If "Yes," describe in Schedule O how this was done	X	
<b>13</b>	Did the organization have a written whistleblower policy?	X	
<b>14</b>	Did the organization have a written document retention and destruction policy?	X	
<b>15</b>	Did the process for determining compensation of the following persons include a review and approval by independent persons, comparability data, and contemporaneous substantiation of the deliberation and decision?		
<b>15a</b>	The organization's CEO, Executive Director, or top management official		X
<b>15b</b>	Other officers or key employees of the organization		X
	If "Yes" to line 15a or 15b, describe the process in Schedule O (see instructions).		
<b>16a</b>	Did the organization invest in, contribute assets to, or participate in a joint venture or similar arrangement with a taxable entity during the year?		X
<b>16b</b>	If "Yes," did the organization follow a written policy or procedure requiring the organization to evaluate its participation in joint venture arrangements under applicable federal tax law, and take steps to safeguard the organization's exempt status with respect to such arrangements?		

**Section C. Disclosure**

- 17** List the states with which a copy of this Form 990 is required to be filed **▶ PA**
- 18** Section 6104 requires an organization to make its Forms 1023 (1024 or 1024-A, if applicable), 990, and 990-T (Section 501(c)(3)s only) available for public inspection. Indicate how you made these available. Check all that apply.  
 Own website  Another's website  Upon request  Other (explain on Schedule O)
- 19** Describe on Schedule O whether (and if so, how) the organization made its governing documents, conflict of interest policy, and financial statements available to the public during the tax year.
- 20** State the name, address, and telephone number of the person who possesses the organization's books and records **▶**  
**ANDREW MCDONALD, CFO - 925-924-7196**  
**6120 STONERIDGE MALL RD., STE 100, PLEASANTON, CA 94588**

**Part VII Compensation of Officers, Directors, Trustees, Key Employees, Highest Compensated Employees, and Independent Contractors**

Check if Schedule O contains a response or note to any line in this Part VII

**Section A. Officers, Directors, Trustees, Key Employees, and Highest Compensated Employees**

**1a** Complete this table for all persons required to be listed. Report compensation for the calendar year ending with or within the organization's tax year.

- List all of the organization's **current** officers, directors, trustees (whether individuals or organizations), regardless of amount of compensation. Enter -0- in columns (D), (E), and (F) if no compensation was paid.
- List all of the organization's **current** key employees, if any. See instructions for definition of "key employee."
- List the organization's five **current** highest compensated employees (other than an officer, director, trustee, or key employee) who received reportable compensation (Box 5 of Form W-2 and/or Box 7 of Form 1099-MISC) of more than \$100,000 from the organization and any related organizations.
- List all of the organization's **former** officers, key employees, and highest compensated employees who received more than \$100,000 of reportable compensation from the organization and any related organizations.
- List all of the organization's **former directors or trustees** that received, in the capacity as a former director or trustee of the organization, more than \$10,000 of reportable compensation from the organization and any related organizations. See instructions for the order in which to list the persons above.

Check this box if neither the organization nor any related organization compensated any current officer, director, or trustee.

(A) Name and title	(B) Average hours per week (list any hours for related organizations below line)	(C) Position (do not check more than one box, unless person is both an officer and a director/trustee)						(D) Reportable compensation from the organization (W-2/1099-MISC)	(E) Reportable compensation from related organizations (W-2/1099-MISC)	(F) Estimated amount of other compensation from the organization and related organizations
		Individual trustee or director	Institutional trustee	Officer	Key employee	Highest compensated employee	Former			
(1) JOHN H. COCHRANE, III PRESIDENT/CHIEF EXECUTIVE OFFICER	0.20 39.80			X				0.	1,015,773.	26,534.
(2) DANIEL OGUS CHIEF OPERATING OFFICER	0.20 39.80			X				0.	769,390.	30,242.
(3) PAMELA CLAASSEN FMR CFO(END 12/19);CH CAP STRAT(1/20	0.00 18.00					X		0.	529,142.	25,636.
(4) FLEMING MENG CHIEF INFORMATION OFFICER	0.20 39.80			X				0.	497,810.	29,856.
(5) JUDEE M. BAVARIA PRESIDENT & CEO (UNTIL 12/31/2019)	0.00 0.00					X		0.	514,496.	0.
(6) ANCEL ROMERO CHIEF EXECUTIVE-AFFORD. HS	0.50 39.50			X				0.	458,376.	26,167.
(7) ANDREW MCDONALD CHIEF FINANCIAL OFFICER	0.20 39.80			X				0.	379,342.	29,758.
(8) JENNIFER S. KAPPEN VP FINANCE & RISK MGMT	0.50 39.50				X			0.	376,487.	30,548.
(9) TROY KEACH VP HUMAN RESOUCES	0.20 39.80				X			0.	375,029.	13,057.
(10) BETHANY GHASSEMI CHIEF LEGAL COUNSEL	0.20 39.80			X				0.	318,467.	12,184.
(11) RANDALL STAMPER CHAIR	0.20 18.00	X		X				0.	73,000.	0.
(12) H. DECLAN BROWN SECRETARY	0.10 10.50	X		X				0.	63,000.	0.
(13) REV. MICHELLE HOLMES BOARD MEMBER	0.10 8.50	X						0.	63,000.	0.
(14) ALAN GRIFFITH VICE CHAIR	0.10 8.50	X		X				0.	43,000.	0.
(15) REV. RANDY L. BARGE BOARD MEMBER	0.10 2.60	X						0.	0.	0.
(16) HARRY G. DITTMANN BOARD MEMBER	0.10 2.60	X						0.	0.	0.
(17) KENNETH MCKEOWN BOARD MEMBER	0.10 2.60	X						0.	0.	0.

HUMANGOOD EAST FKA PHILA. PRESBYTERY  
HOMES AND SVC. FOR THE AGING

**Part VII** Section A. Officers, Directors, Trustees, Key Employees, and Highest Compensated Employees (continued)

(A) Name and title	(B) Average hours per week (list any hours for related organizations below line)	(C) Position (do not check more than one box, unless person is both an officer and a director/trustee)						(D) Reportable compensation from the organization (W-2/1099-MISC)	(E) Reportable compensation from related organizations (W-2/1099-MISC)	(F) Estimated amount of other compensation from the organization and related organizations
		Individual trustee or director	Institutional trustee	Officer	Key employee	Highest compensated employee	Former			
(18) REV. DR. NANCY E. MUTH BOARD MEMBER	0.10 2.60	X						0.	0.	0.
(19) G. ROBERT OVERHISER, JR. BOARD MEMBER	0.10 2.60	X						0.	0.	0.
(20) WILLIAM G. YOUNG, JR. EX-OFFICIO NON-VOTING BD MEMBER	0.10 2.60	X						0.	0.	0.
<b>1b Subtotal</b>								0.	5,476,312.	223,982.
<b>c Total from continuation sheets to Part VII, Section A</b>								0.	0.	0.
<b>d Total (add lines 1b and 1c)</b>								0.	5,476,312.	223,982.

2 Total number of individuals (including but not limited to those listed above) who received more than \$100,000 of reportable compensation from the organization **0**

	Yes	No
3 Did the organization list any <b>former</b> officer, director, trustee, key employee, or highest compensated employee on line 1a? <i>If "Yes," complete Schedule J for such individual</i>	X	
4 For any individual listed on line 1a, is the sum of reportable compensation and other compensation from the organization and related organizations greater than \$150,000? <i>If "Yes," complete Schedule J for such individual</i>	X	
5 Did any person listed on line 1a receive or accrue compensation from any unrelated organization or individual for services rendered to the organization? <i>If "Yes," complete Schedule J for such person</i>		X

**Section B. Independent Contractors**

1 Complete this table for your five highest compensated independent contractors that received more than \$100,000 of compensation from the organization. Report compensation for the calendar year ending with or within the organization's tax year.

(A) Name and business address	(B) Description of services	(C) Compensation
NONE		

2 Total number of independent contractors (including but not limited to those listed above) who received more than \$100,000 of compensation from the organization **0**

HUMANGOOD EAST FKA PHILA. PRESBYTERY  
 HOMES AND SVC. FOR THE AGING

**Part VIII Statement of Revenue**

Check if Schedule O contains a response or note to any line in this Part VIII

			(A)	(B)	(C)	(D)	
			Total revenue	Related or exempt function revenue	Unrelated business revenue	Revenue excluded from tax under sections 512 - 514	
Contributions, Gifts, Grants and Other Similar Amounts	<b>1 a</b>	Federated campaigns	<b>1a</b>				
	<b>b</b>	Membership dues	<b>1b</b>				
	<b>c</b>	Fundraising events	<b>1c</b>				
	<b>d</b>	Related organizations	<b>1d</b>				
	<b>e</b>	Government grants (contributions)	<b>1e</b>				
	<b>f</b>	All other contributions, gifts, grants, and similar amounts not included above	<b>1f</b>				
	<b>g</b>	Noncash contributions included in lines 1a-1f	<b>1g</b> \$				
	<b>h</b>	<b>Total.</b> Add lines 1a-1f					
Program Service Revenue	<b>2 a</b>		<b>Business Code</b>				
	<b>b</b>						
	<b>c</b>						
	<b>d</b>						
	<b>e</b>						
	<b>f</b>	All other program service revenue					
	<b>g</b>	<b>Total.</b> Add lines 2a-2f					
Other Revenue	<b>3</b>	Investment income (including dividends, interest, and other similar amounts)		42,684.		42,684.	
	<b>4</b>	Income from investment of tax-exempt bond proceeds					
	<b>5</b>	Royalties					
	<b>6 a</b>	Gross rents	(i) Real				
			(ii) Personal				
	<b>6 b</b>	Less: rental expenses					
	<b>6 c</b>	Rental income or (loss)					
	<b>d</b>	Net rental income or (loss)					
	<b>7 a</b>	Gross amount from sales of assets other than inventory	(i) Securities				
			(ii) Other				
	<b>7 b</b>	Less: cost or other basis and sales expenses					
	<b>7 c</b>	Gain or (loss)					
	<b>d</b>	Net gain or (loss)					
<b>8 a</b>	Gross income from fundraising events (not including \$ _____ of contributions reported on line 1c). See Part IV, line 18						
<b>8 b</b>	Less: direct expenses						
<b>c</b>	Net income or (loss) from fundraising events						
<b>9 a</b>	Gross income from gaming activities. See Part IV, line 19						
<b>9 b</b>	Less: direct expenses						
<b>c</b>	Net income or (loss) from gaming activities						
<b>10 a</b>	Gross sales of inventory, less returns and allowances						
<b>10 b</b>	Less: cost of goods sold						
<b>c</b>	Net income or (loss) from sales of inventory						
Miscellaneous Revenue	<b>11 a</b>		<b>Business Code</b>				
	<b>b</b>						
	<b>c</b>						
	<b>d</b>	All other revenue					
	<b>e</b>	<b>Total.</b> Add lines 11a-11d					
<b>12</b>	<b>Total revenue.</b> See instructions		42,684.	0.	0.	42,684.	

HUMANGOOD EAST FKA PHILA. PRESBYTERY  
 HOMES AND SVC. FOR THE AGING

**Part IX Statement of Functional Expenses**

Section 501(c)(3) and 501(c)(4) organizations must complete all columns. All other organizations must complete column (A).

Check if Schedule O contains a response or note to any line in this Part IX

Do not include amounts reported on lines 6b, 7b, 8b, 9b, and 10b of Part VIII.	(A) Total expenses	(B) Program service expenses	(C) Management and general expenses	(D) Fundraising expenses
1 Grants and other assistance to domestic organizations and domestic governments. See Part IV, line 21 ...				
2 Grants and other assistance to domestic individuals. See Part IV, line 22 .....				
3 Grants and other assistance to foreign organizations, foreign governments, and foreign individuals. See Part IV, lines 15 and 16 .....				
4 Benefits paid to or for members .....				
5 Compensation of current officers, directors, trustees, and key employees .....				
6 Compensation not included above to disqualified persons (as defined under section 4958(f)(1)) and persons described in section 4958(c)(3)(B) .....				
7 Other salaries and wages .....				
8 Pension plan accruals and contributions (include section 401(k) and 403(b) employer contributions)				
9 Other employee benefits .....				
10 Payroll taxes .....				
11 Fees for services (nonemployees):				
a Management .....				
b Legal .....				
c Accounting .....				
d Lobbying .....				
e Professional fundraising services. See Part IV, line 17				
f Investment management fees .....				
g Other. (If line 11g amount exceeds 10% of line 25, column (A) amount, list line 11g expenses on Sch O.)				
12 Advertising and promotion .....				
13 Office expenses .....				
14 Information technology .....				
15 Royalties .....				
16 Occupancy .....				
17 Travel .....				
18 Payments of travel or entertainment expenses for any federal, state, or local public officials ...				
19 Conferences, conventions, and meetings .....				
20 Interest .....	21,753.		21,753.	
21 Payments to affiliates .....				
22 Depreciation, depletion, and amortization .....				
23 Insurance .....				
24 Other expenses. Itemize expenses not covered above (List miscellaneous expenses on line 24e. If line 24e amount exceeds 10% of line 25, column (A) amount, list line 24e expenses on Schedule O.)				
a _____				
b _____				
c _____				
d _____				
e All other expenses _____				
<b>25 Total functional expenses.</b> Add lines 1 through 24e	<b>21,753.</b>	<b>0.</b>	<b>21,753.</b>	<b>0.</b>
<b>26 Joint costs.</b> Complete this line only if the organization reported in column (B) joint costs from a combined educational campaign and fundraising solicitation.				

Check here  if following SOP 98-2 (ASC 958-720)

HUMANGOOD EAST FKA PHILA. PRESBYTERY  
HOMES AND SVC. FOR THE AGING

Form 990 (2020)

23-2828862 Page 11

**Part X Balance Sheet**

Check if Schedule O contains a response or note to any line in this Part X

		(A) Beginning of year		(B) End of year
<b>Assets</b>	<b>1</b> Cash - non-interest-bearing .....	500.	<b>1</b>	500.
	<b>2</b> Savings and temporary cash investments .....		<b>2</b>	1,435.
	<b>3</b> Pledges and grants receivable, net .....		<b>3</b>	
	<b>4</b> Accounts receivable, net .....		<b>4</b>	
	<b>5</b> Loans and other receivables from any current or former officer, director, trustee, key employee, creator or founder, substantial contributor, or 35% controlled entity or family member of any of these persons .....		<b>5</b>	
	<b>6</b> Loans and other receivables from other disqualified persons (as defined under section 4958(f)(1)), and persons described in section 4958(c)(3)(B) .....		<b>6</b>	
	<b>7</b> Notes and loans receivable, net .....		<b>7</b>	
	<b>8</b> Inventories for sale or use .....		<b>8</b>	
	<b>9</b> Prepaid expenses and deferred charges .....		<b>9</b>	
	<b>10a</b> Land, buildings, and equipment: cost or other basis. Complete Part VI of Schedule D .....	<b>10a</b>		
	<b>b</b> Less: accumulated depreciation .....	<b>10b</b>		<b>10c</b>
	<b>11</b> Investments - publicly traded securities .....		<b>11</b>	
	<b>12</b> Investments - other securities. See Part IV, line 11 .....	1,000,100.	<b>12</b>	1,000,100.
	<b>13</b> Investments - program-related. See Part IV, line 11 .....		<b>13</b>	
	<b>14</b> Intangible assets .....		<b>14</b>	
	<b>15</b> Other assets. See Part IV, line 11 .....	9,371,963.	<b>15</b>	9,414,647.
<b>16 Total assets.</b> Add lines 1 through 15 (must equal line 33) .....	10,372,563.	<b>16</b>	10,416,682.	
<b>Liabilities</b>	<b>17</b> Accounts payable and accrued expenses .....	45,205.	<b>17</b>	68,433.
	<b>18</b> Grants payable .....		<b>18</b>	
	<b>19</b> Deferred revenue .....		<b>19</b>	
	<b>20</b> Tax-exempt bond liabilities .....		<b>20</b>	
	<b>21</b> Escrow or custodial account liability. Complete Part IV of Schedule D .....		<b>21</b>	
	<b>22</b> Loans and other payables to any current or former officer, director, trustee, key employee, creator or founder, substantial contributor, or 35% controlled entity or family member of any of these persons .....		<b>22</b>	
	<b>23</b> Secured mortgages and notes payable to unrelated third parties .....	9,282,525.	<b>23</b>	9,282,525.
	<b>24</b> Unsecured notes and loans payable to unrelated third parties .....		<b>24</b>	
	<b>25</b> Other liabilities (including federal income tax, payables to related third parties, and other liabilities not included on lines 17-24). Complete Part X of Schedule D .....	600.	<b>25</b>	560.
	<b>26 Total liabilities.</b> Add lines 17 through 25 .....	9,328,330.	<b>26</b>	9,351,518.
<b>Net Assets or Fund Balances</b>	<b>Organizations that follow FASB ASC 958, check here</b> <input checked="" type="checkbox"/> <b>and complete lines 27, 28, 32, and 33.</b>			
	<b>27</b> Net assets without donor restrictions .....	1,044,233.	<b>27</b>	1,065,164.
	<b>28</b> Net assets with donor restrictions .....		<b>28</b>	
	<b>Organizations that do not follow FASB ASC 958, check here</b> <input type="checkbox"/> <b>and complete lines 29 through 33.</b>			
	<b>29</b> Capital stock or trust principal, or current funds .....		<b>29</b>	
	<b>30</b> Paid-in or capital surplus, or land, building, or equipment fund .....		<b>30</b>	
	<b>31</b> Retained earnings, endowment, accumulated income, or other funds .....		<b>31</b>	
	<b>32</b> Total net assets or fund balances .....	1,044,233.	<b>32</b>	1,065,164.
<b>33</b> Total liabilities and net assets/fund balances .....	10,372,563.	<b>33</b>	10,416,682.	

Form 990 (2020)

**Part XI Reconciliation of Net Assets**

Check if Schedule O contains a response or note to any line in this Part XI

1	Total revenue (must equal Part VIII, column (A), line 12)	1	42,684.
2	Total expenses (must equal Part IX, column (A), line 25)	2	21,753.
3	Revenue less expenses. Subtract line 2 from line 1	3	20,931.
4	Net assets or fund balances at beginning of year (must equal Part X, line 32, column (A))	4	1,044,233.
5	Net unrealized gains (losses) on investments	5	
6	Donated services and use of facilities	6	
7	Investment expenses	7	
8	Prior period adjustments	8	
9	Other changes in net assets or fund balances (explain on Schedule O)	9	0.
10	Net assets or fund balances at end of year. Combine lines 3 through 9 (must equal Part X, line 32, column (B))	10	1,065,164.

**Part XII Financial Statements and Reporting**

Check if Schedule O contains a response or note to any line in this Part XII

		Yes	No
1	Accounting method used to prepare the Form 990: <input type="checkbox"/> Cash <input checked="" type="checkbox"/> Accrual <input type="checkbox"/> Other _____ If the organization changed its method of accounting from a prior year or checked "Other," explain in Schedule O.		
2a	Were the organization's financial statements compiled or reviewed by an independent accountant? _____ If "Yes," check a box below to indicate whether the financial statements for the year were compiled or reviewed on a separate basis, consolidated basis, or both: <input type="checkbox"/> Separate basis <input type="checkbox"/> Consolidated basis <input type="checkbox"/> Both consolidated and separate basis		X
2b	Were the organization's financial statements audited by an independent accountant? _____ If "Yes," check a box below to indicate whether the financial statements for the year were audited on a separate basis, consolidated basis, or both: <input type="checkbox"/> Separate basis <input checked="" type="checkbox"/> Consolidated basis <input type="checkbox"/> Both consolidated and separate basis	X	
2c	If "Yes" to line 2a or 2b, does the organization have a committee that assumes responsibility for oversight of the audit, review, or compilation of its financial statements and selection of an independent accountant? _____ If the organization changed either its oversight process or selection process during the tax year, explain on Schedule O.	X	
3a	As a result of a federal award, was the organization required to undergo an audit or audits as set forth in the Single Audit Act and OMB Circular A-133? _____		X
3b	If "Yes," did the organization undergo the required audit or audits? If the organization did not undergo the required audit or audits, explain why on Schedule O and describe any steps taken to undergo such audits _____		



**SCHEDULE A**  
**(Form 990 or 990-EZ)**

Department of the Treasury  
Internal Revenue Service

**Public Charity Status and Public Support**

Complete if the organization is a section 501(c)(3) organization or a section 4947(a)(1) nonexempt charitable trust.

▶ Attach to Form 990 or Form 990-EZ.

▶ Go to [www.irs.gov/Form990](http://www.irs.gov/Form990) for instructions and the latest information.

OMB No. 1545-0047

**2020**

Open to Public Inspection

Name of the organization **HUMANGOOD EAST FKA PHILA. PRESBYTERY HOMES AND SVC. FOR THE AGING** Employer identification number **23-2828862**

**Part I Reason for Public Charity Status.** (All organizations must complete this part.) See instructions.

The organization is not a private foundation because it is: (For lines 1 through 12, check only one box.)

- 1  A church, convention of churches, or association of churches described in **section 170(b)(1)(A)(i).**
- 2  A school described in **section 170(b)(1)(A)(ii).** (Attach Schedule E (Form 990 or 990-EZ).)
- 3  A hospital or a cooperative hospital service organization described in **section 170(b)(1)(A)(iii).**
- 4  A medical research organization operated in conjunction with a hospital described in **section 170(b)(1)(A)(iii).** Enter the hospital's name, city, and state: \_\_\_\_\_
- 5  An organization operated for the benefit of a college or university owned or operated by a governmental unit described in **section 170(b)(1)(A)(iv).** (Complete Part II.)
- 6  A federal, state, or local government or governmental unit described in **section 170(b)(1)(A)(v).**
- 7  An organization that normally receives a substantial part of its support from a governmental unit or from the general public described in **section 170(b)(1)(A)(vi).** (Complete Part II.)
- 8  A community trust described in **section 170(b)(1)(A)(vi).** (Complete Part II.)
- 9  An agricultural research organization described in **section 170(b)(1)(A)(ix)** operated in conjunction with a land-grant college or university or a non-land-grant college of agriculture (see instructions). Enter the name, city, and state of the college or university: \_\_\_\_\_
- 10  An organization that normally receives (1) more than 33 1/3% of its support from contributions, membership fees, and gross receipts from activities related to its exempt functions, subject to certain exceptions; and (2) no more than 33 1/3% of its support from gross investment income and unrelated business taxable income (less section 511 tax) from businesses acquired by the organization after June 30, 1975. See **section 509(a)(2).** (Complete Part III.)
- 11  An organization organized and operated exclusively to test for public safety. See **section 509(a)(4).**
- 12  An organization organized and operated exclusively for the benefit of, to perform the functions of, or to carry out the purposes of one or more publicly supported organizations described in **section 509(a)(1)** or **section 509(a)(2).** See **section 509(a)(3).** Check the box in lines 12a through 12d that describes the type of supporting organization and complete lines 12e, 12f, and 12g.
  - a  **Type I.** A supporting organization operated, supervised, or controlled by its supported organization(s), typically by giving the supported organization(s) the power to regularly appoint or elect a majority of the directors or trustees of the supporting organization. **You must complete Part IV, Sections A and B.**
  - b  **Type II.** A supporting organization supervised or controlled in connection with its supported organization(s), by having control or management of the supporting organization vested in the same persons that control or manage the supported organization(s). **You must complete Part IV, Sections A and C.**
  - c  **Type III functionally integrated.** A supporting organization operated in connection with, and functionally integrated with, its supported organization(s) (see instructions). **You must complete Part IV, Sections A, D, and E.**
  - d  **Type III non-functionally integrated.** A supporting organization operated in connection with its supported organization(s) that is not functionally integrated. The organization generally must satisfy a distribution requirement and an attentiveness requirement (see instructions). **You must complete Part IV, Sections A and D, and Part V.**
  - e  Check this box if the organization received a written determination from the IRS that it is a Type I, Type II, Type III functionally integrated, or Type III non-functionally integrated supporting organization.

f Enter the number of supported organizations ..... 16

g Provide the following information about the supported organization(s).

(i) Name of supported organization	(ii) EIN	(iii) Type of organization (described on lines 1-10 above (see instructions))	(iv) Is the organization listed in your governing document?		(v) Amount of monetary support (see instructions)	(vi) Amount of other support (see instructions)
			Yes	No		
HUMANGOOD PA FKA PHILADELPHIA PRESBY	23-1547587	10		X	0.	0.
PHILADELPHIA PRESBYTERY APARTMEN	23-2081651	10		X	0.	0.
PHILADELPHIA PRESBYTERY APARTMEN	22-2466663	10		X	0.	0.
TIOGA PRESBYTERIAN APARTMENTS, INC.	23-2763902	10		X	0.	0.
SOUTHWEST PHILADELPHIA PRESBY	23-2700459	10		X	0.	0.
<b>Total</b>					<b>0.</b>	<b>0.</b>

Part II Support Schedule for Organizations Described in Sections 170(b)(1)(A)(iv) and 170(b)(1)(A)(vi)

(Complete only if you checked the box on line 5, 7, or 8 of Part I or if the organization failed to qualify under Part III. If the organization fails to qualify under the tests listed below, please complete Part III.)

Section A. Public Support

Table with 7 columns: (a) 2016, (b) 2017, (c) 2018, (d) 2019, (e) 2020, (f) Total. Rows include: 1 Gifts, grants, contributions, and membership fees received; 2 Tax revenues levied for the organization's benefit; 3 The value of services or facilities furnished by a governmental unit; 4 Total. Add lines 1 through 3; 5 The portion of total contributions by each person (other than a governmental unit or publicly supported organization) included on line 1 that exceeds 2% of the amount shown on line 11, column (f); 6 Public support. Subtract line 5 from line 4.

Section B. Total Support

Table with 7 columns: (a) 2016, (b) 2017, (c) 2018, (d) 2019, (e) 2020, (f) Total. Rows include: 7 Amounts from line 4; 8 Gross income from interest, dividends, payments received on securities loans, rents, royalties, and income from similar sources; 9 Net income from unrelated business activities, whether or not the business is regularly carried on; 10 Other income. Do not include gain or loss from the sale of capital assets (Explain in Part VI.); 11 Total support. Add lines 7 through 10; 12 Gross receipts from related activities, etc. (see instructions); 13 First 5 years. If the Form 990 is for the organization's first, second, third, fourth, or fifth tax year as a section 501(c)(3) organization, check this box and stop here.

Section C. Computation of Public Support Percentage

Table with 3 columns: Line number, Description, and Percentage. Rows include: 14 Public support percentage for 2020 (line 6, column (f), divided by line 11, column (f)); 15 Public support percentage from 2019 Schedule A, Part II, line 14; 16a 33 1/3% support test - 2020; b 33 1/3% support test - 2019; 17a 10% -facts-and-circumstances test - 2020; b 10% -facts-and-circumstances test - 2019; 18 Private foundation.

Part III Support Schedule for Organizations Described in Section 509(a)(2)

(Complete only if you checked the box on line 10 of Part I or if the organization failed to qualify under Part II. If the organization fails to qualify under the tests listed below, please complete Part II.)

Section A. Public Support

Table with 7 columns: (a) 2016, (b) 2017, (c) 2018, (d) 2019, (e) 2020, (f) Total. Rows include: 1 Gifts, grants, contributions, and membership fees received; 2 Gross receipts from admissions; 3 Gross receipts from activities that are not an unrelated trade or business; 4 Tax revenues levied for the organization's benefit; 5 The value of services or facilities furnished by a governmental unit; 6 Total; 7a Amounts included on lines 1, 2, and 3 received from disqualified persons; 7b Amounts included on lines 2 and 3 received from other than disqualified persons; 8 Public support.

Section B. Total Support

Table with 7 columns: (a) 2016, (b) 2017, (c) 2018, (d) 2019, (e) 2020, (f) Total. Rows include: 9 Amounts from line 6; 10a Gross income from interest, dividends, payments received on securities loans, rents, royalties, and income from similar sources; 10b Unrelated business taxable income (less section 511 taxes) from businesses acquired after June 30, 1975; 10c Add lines 10a and 10b; 11 Net income from unrelated business activities not included in line 10b, whether or not the business is regularly carried on; 12 Other income. Do not include gain or loss from the sale of capital assets (Explain in Part VI.); 13 Total support.

14 First 5 years. If the Form 990 is for the organization's first, second, third, fourth, or fifth tax year as a section 501(c)(3) organization, check this box and stop here

Section C. Computation of Public Support Percentage

Table with 2 columns: Description, Percentage. Row 15: Public support percentage for 2020 (line 8, column (f), divided by line 13, column (f)) 15%. Row 16: Public support percentage from 2019 Schedule A, Part III, line 15 16%.

Section D. Computation of Investment Income Percentage

Table with 2 columns: Description, Percentage. Row 17: Investment income percentage for 2020 (line 10c, column (f), divided by line 13, column (f)) 17%. Row 18: Investment income percentage from 2019 Schedule A, Part III, line 17 18%.

19a 33 1/3% support tests - 2020. If the organization did not check the box on line 14, and line 15 is more than 33 1/3%, and line 17 is not more than 33 1/3%, check this box and stop here. The organization qualifies as a publicly supported organization

b 33 1/3% support tests - 2019. If the organization did not check a box on line 14 or line 19a, and line 16 is more than 33 1/3%, and line 18 is not more than 33 1/3%, check this box and stop here. The organization qualifies as a publicly supported organization

20 Private foundation. If the organization did not check a box on line 14, 19a, or 19b, check this box and see instructions

**Part IV Supporting Organizations**

(Complete only if you checked a box in line 12 on Part I. If you checked box 12a, Part I, complete Sections A and B. If you checked box 12b, Part I, complete Sections A and C. If you checked box 12c, Part I, complete Sections A, D, and E. If you checked box 12d, Part I, complete Sections A and D, and complete Part V.)

**Section A. All Supporting Organizations**

	Yes	No
<b>1</b> Are all of the organization's supported organizations listed by name in the organization's governing documents? <i>If "No," describe in Part VI how the supported organizations are designated. If designated by class or purpose, describe the designation. If historic and continuing relationship, explain.</i>		X
<b>2</b> Did the organization have any supported organization that does not have an IRS determination of status under section 509(a)(1) or (2)? <i>If "Yes," explain in Part VI how the organization determined that the supported organization was described in section 509(a)(1) or (2).</i>		X
<b>3a</b> Did the organization have a supported organization described in section 501(c)(4), (5), or (6)? <i>If "Yes," answer lines 3b and 3c below.</i>		X
<b>b</b> Did the organization confirm that each supported organization qualified under section 501(c)(4), (5), or (6) and satisfied the public support tests under section 509(a)(2)? <i>If "Yes," describe in Part VI when and how the organization made the determination.</i>		
<b>c</b> Did the organization ensure that all support to such organizations was used exclusively for section 170(c)(2)(B) purposes? <i>If "Yes," explain in Part VI what controls the organization put in place to ensure such use.</i>		
<b>4a</b> Was any supported organization not organized in the United States ("foreign supported organization")? <i>If "Yes," and if you checked box 12a or 12b in Part I, answer lines 4b and 4c below.</i>		X
<b>b</b> Did the organization have ultimate control and discretion in deciding whether to make grants to the foreign supported organization? <i>If "Yes," describe in Part VI how the organization had such control and discretion despite being controlled or supervised by or in connection with its supported organizations.</i>		
<b>c</b> Did the organization support any foreign supported organization that does not have an IRS determination under sections 501(c)(3) and 509(a)(1) or (2)? <i>If "Yes," explain in Part VI what controls the organization used to ensure that all support to the foreign supported organization was used exclusively for section 170(c)(2)(B) purposes.</i>		
<b>5a</b> Did the organization add, substitute, or remove any supported organizations during the tax year? <i>If "Yes," answer lines 5b and 5c below (if applicable). Also, provide detail in Part VI, including (i) the names and EIN numbers of the supported organizations added, substituted, or removed; (ii) the reasons for each such action; (iii) the authority under the organization's organizing document authorizing such action; and (iv) how the action was accomplished (such as by amendment to the organizing document).</i>		X
<b>b Type I or Type II only.</b> Was any added or substituted supported organization part of a class already designated in the organization's organizing document?		
<b>c Substitutions only.</b> Was the substitution the result of an event beyond the organization's control?		
<b>6</b> Did the organization provide support (whether in the form of grants or the provision of services or facilities) to anyone other than (i) its supported organizations, (ii) individuals that are part of the charitable class benefited by one or more of its supported organizations, or (iii) other supporting organizations that also support or benefit one or more of the filing organization's supported organizations? <i>If "Yes," provide detail in Part VI.</i>		X
<b>7</b> Did the organization provide a grant, loan, compensation, or other similar payment to a substantial contributor (as defined in section 4958(c)(3)(C)), a family member of a substantial contributor, or a 35% controlled entity with regard to a substantial contributor? <i>If "Yes," complete Part I of Schedule L (Form 990 or 990-EZ).</i>		X
<b>8</b> Did the organization make a loan to a disqualified person (as defined in section 4958) not described in line 7? <i>If "Yes," complete Part I of Schedule L (Form 990 or 990-EZ).</i>		X
<b>9a</b> Was the organization controlled directly or indirectly at any time during the tax year by one or more disqualified persons, as defined in section 4946 (other than foundation managers and organizations described in section 509(a)(1) or (2))? <i>If "Yes," provide detail in Part VI.</i>		X
<b>b</b> Did one or more disqualified persons (as defined in line 9a) hold a controlling interest in any entity in which the supporting organization had an interest? <i>If "Yes," provide detail in Part VI.</i>		X
<b>c</b> Did a disqualified person (as defined in line 9a) have an ownership interest in, or derive any personal benefit from, assets in which the supporting organization also had an interest? <i>If "Yes," provide detail in Part VI.</i>		X
<b>10a</b> Was the organization subject to the excess business holdings rules of section 4943 because of section 4943(f) (regarding certain Type II supporting organizations, and all Type III non-functionally integrated supporting organizations)? <i>If "Yes," answer line 10b below.</i>		X
<b>b</b> Did the organization have any excess business holdings in the tax year? <i>(Use Schedule C, Form 4720, to determine whether the organization had excess business holdings.)</i>		

**Part IV Supporting Organizations** (continued)

	Yes	No
<b>11</b> Has the organization accepted a gift or contribution from any of the following persons?		
<b>a</b> A person who directly or indirectly controls, either alone or together with persons described in lines 11b and 11c below, the governing body of a supported organization?		X
<b>b</b> A family member of a person described in line 11a above?		X
<b>c</b> A 35% controlled entity of a person described in line 11a or 11b above? <i>If "Yes" to line 11a, 11b, or 11c, provide detail in Part VI.</i>		X

**Section B. Type I Supporting Organizations**

	Yes	No
<b>1</b> Did the governing body, members of the governing body, officers acting in their official capacity, or membership of one or more supported organizations have the power to regularly appoint or elect at least a majority of the organization's officers, directors, or trustees at all times during the tax year? <i>If "No," describe in Part VI how the supported organization(s) effectively operated, supervised, or controlled the organization's activities. If the organization had more than one supported organization, describe how the powers to appoint and/or remove officers, directors, or trustees were allocated among the supported organizations and what conditions or restrictions, if any, applied to such powers during the tax year.</i>		
<b>2</b> Did the organization operate for the benefit of any supported organization other than the supported organization(s) that operated, supervised, or controlled the supporting organization? <i>If "Yes," explain in Part VI how providing such benefit carried out the purposes of the supported organization(s) that operated, supervised, or controlled the supporting organization.</i>		

**Section C. Type II Supporting Organizations**

	Yes	No
<b>1</b> Were a majority of the organization's directors or trustees during the tax year also a majority of the directors or trustees of each of the organization's supported organization(s)? <i>If "No," describe in Part VI how control or management of the supporting organization was vested in the same persons that controlled or managed the supported organization(s).</i>	X	

**Section D. All Type III Supporting Organizations**

	Yes	No
<b>1</b> Did the organization provide to each of its supported organizations, by the last day of the fifth month of the organization's tax year, (i) a written notice describing the type and amount of support provided during the prior tax year, (ii) a copy of the Form 990 that was most recently filed as of the date of notification, and (iii) copies of the organization's governing documents in effect on the date of notification, to the extent not previously provided?		
<b>2</b> Were any of the organization's officers, directors, or trustees either (i) appointed or elected by the supported organization(s) or (ii) serving on the governing body of a supported organization? <i>If "No," explain in Part VI how the organization maintained a close and continuous working relationship with the supported organization(s).</i>		
<b>3</b> By reason of the relationship described in line 2, above, did the organization's supported organizations have a significant voice in the organization's investment policies and in directing the use of the organization's income or assets at all times during the tax year? <i>If "Yes," describe in Part VI the role the organization's supported organizations played in this regard.</i>		

**Section E. Type III Functionally Integrated Supporting Organizations**

<b>1</b> Check the box next to the method that the organization used to satisfy the Integral Part Test during the year (see instructions).		
<b>a</b> <input type="checkbox"/> The organization satisfied the Activities Test. Complete line 2 below.		
<b>b</b> <input type="checkbox"/> The organization is the parent of each of its supported organizations. Complete line 3 below.		
<b>c</b> <input type="checkbox"/> The organization supported a governmental entity. Describe in Part VI how you supported a governmental entity (see instructions).		
<b>2</b> Activities Test. Answer lines 2a and 2b below.		
<b>a</b> Did substantially all of the organization's activities during the tax year directly further the exempt purposes of the supported organization(s) to which the organization was responsive? <i>If "Yes," then in Part VI identify those supported organizations and explain how these activities directly furthered their exempt purposes, how the organization was responsive to those supported organizations, and how the organization determined that these activities constituted substantially all of its activities.</i>		
<b>b</b> Did the activities described in line 2a, above, constitute activities that, but for the organization's involvement, one or more of the organization's supported organization(s) would have been engaged in? <i>If "Yes," explain in Part VI the reasons for the organization's position that its supported organization(s) would have engaged in these activities but for the organization's involvement.</i>		
<b>3</b> Parent of Supported Organizations. Answer lines 3a and 3b below.		
<b>a</b> Did the organization have the power to regularly appoint or elect a majority of the officers, directors, or trustees of each of the supported organizations? <i>If "Yes" or "No" provide details in Part VI.</i>		
<b>b</b> Did the organization exercise a substantial degree of direction over the policies, programs, and activities of each of its supported organizations? <i>If "Yes," describe in Part VI the role played by the organization in this regard.</i>		

**Part V Type III Non-Functionally Integrated 509(a)(3) Supporting Organizations**

1  Check here if the organization satisfied the Integral Part Test as a qualifying trust on Nov. 20, 1970 ( *explain in Part VI*). See instructions.  
All other Type III non-functionally integrated supporting organizations must complete Sections A through E.

Section A - Adjusted Net Income		(A) Prior Year	(B) Current Year (optional)
1	Net short-term capital gain	1	
2	Recoveries of prior-year distributions	2	
3	Other gross income (see instructions)	3	
4	Add lines 1 through 3.	4	
5	Depreciation and depletion	5	
6	Portion of operating expenses paid or incurred for production or collection of gross income or for management, conservation, or maintenance of property held for production of income (see instructions)	6	
7	Other expenses (see instructions)	7	
8	<b>Adjusted Net Income</b> (subtract lines 5, 6, and 7 from line 4)	8	

Section B - Minimum Asset Amount		(A) Prior Year	(B) Current Year (optional)
1	Aggregate fair market value of all non-exempt-use assets (see instructions for short tax year or assets held for part of year):		
a	Average monthly value of securities	1a	
b	Average monthly cash balances	1b	
c	Fair market value of other non-exempt-use assets	1c	
d	<b>Total</b> (add lines 1a, 1b, and 1c)	1d	
e	<b>Discount</b> claimed for blockage or other factors ( <i>explain in detail in Part VI</i> ):		
2	Acquisition indebtedness applicable to non-exempt-use assets	2	
3	Subtract line 2 from line 1d.	3	
4	Cash deemed held for exempt use. Enter 0.015 of line 3 (for greater amount, see instructions).	4	
5	Net value of non-exempt-use assets (subtract line 4 from line 3)	5	
6	Multiply line 5 by 0.035.	6	
7	Recoveries of prior-year distributions	7	
8	<b>Minimum Asset Amount</b> (add line 7 to line 6)	8	

Section C - Distributable Amount			Current Year
1	Adjusted net income for prior year (from Section A, line 8, column A)	1	
2	Enter 0.85 of line 1.	2	
3	Minimum asset amount for prior year (from Section B, line 8, column A)	3	
4	Enter greater of line 2 or line 3.	4	
5	Income tax imposed in prior year	5	
6	<b>Distributable Amount.</b> Subtract line 5 from line 4, unless subject to emergency temporary reduction (see instructions).	6	
7	<input type="checkbox"/> Check here if the current year is the organization's first as a non-functionally integrated Type III supporting organization (see instructions).		

HUMANGOOD EAST FKA PHILA. PRESBYTERY

**Part V** Type III Non-Functionally Integrated 509(a)(3) Supporting Organizations (continued)

Section D - Distributions		Current Year
<b>1</b>	Amounts paid to supported organizations to accomplish exempt purposes	<b>1</b>
<b>2</b>	Amounts paid to perform activity that directly furthers exempt purposes of supported organizations, in excess of income from activity	<b>2</b>
<b>3</b>	Administrative expenses paid to accomplish exempt purposes of supported organizations	<b>3</b>
<b>4</b>	Amounts paid to acquire exempt-use assets	<b>4</b>
<b>5</b>	Qualified set-aside amounts (prior IRS approval required - provide details in Part VI)	<b>5</b>
<b>6</b>	Other distributions (describe in Part VI). See instructions.	<b>6</b>
<b>7</b>	<b>Total annual distributions.</b> Add lines 1 through 6.	<b>7</b>
<b>8</b>	Distributions to attentive supported organizations to which the organization is responsive (provide details in Part VI). See instructions.	<b>8</b>
<b>9</b>	Distributable amount for 2020 from Section C, line 6	<b>9</b>
<b>10</b>	Line 8 amount divided by line 9 amount	<b>10</b>

Section E - Distribution Allocations (see instructions)	(i) Excess Distributions	(ii) Underdistributions Pre-2020	(iii) Distributable Amount for 2020
<b>1</b> Distributable amount for 2020 from Section C, line 6			
<b>2</b> Underdistributions, if any, for years prior to 2020 (reasonable cause required - explain in Part VI). See instructions.			
<b>3</b> Excess distributions carryover, if any, to 2020			
<b>a</b> From 2015			
<b>b</b> From 2016			
<b>c</b> From 2017			
<b>d</b> From 2018			
<b>e</b> From 2019			
<b>f</b> Total of lines 3a through 3e			
<b>g</b> Applied to underdistributions of prior years			
<b>h</b> Applied to 2020 distributable amount			
<b>i</b> Carryover from 2015 not applied (see instructions)			
<b>j</b> Remainder. Subtract lines 3g, 3h, and 3i from line 3f.			
<b>4</b> Distributions for 2020 from Section D, line 7: \$			
<b>a</b> Applied to underdistributions of prior years			
<b>b</b> Applied to 2020 distributable amount			
<b>c</b> Remainder. Subtract lines 4a and 4b from line 4.			
<b>5</b> Remaining underdistributions for years prior to 2020, if any. Subtract lines 3g and 4a from line 2. For result greater than zero, explain in Part VI. See instructions.			
<b>6</b> Remaining underdistributions for 2020. Subtract lines 3h and 4b from line 1. For result greater than zero, explain in Part VI. See instructions.			
<b>7</b> Excess distributions carryover to 2021. Add lines 3j and 4c.			
<b>8</b> Breakdown of line 7:			
<b>a</b> Excess from 2016			
<b>b</b> Excess from 2017			
<b>c</b> Excess from 2018			
<b>d</b> Excess from 2019			
<b>e</b> Excess from 2020			

**Part VI** **Supplemental Information.** Provide the explanations required by Part II, line 10; Part II, line 17a or 17b; Part III, line 12; Part IV, Section A, lines 1, 2, 3b, 3c, 4b, 4c, 5a, 6, 9a, 9b, 9c, 11a, 11b, and 11c; Part IV, Section B, lines 1 and 2; Part IV, Section C, line 1; Part IV, Section D, lines 2 and 3; Part IV, Section E, lines 1c, 2a, 2b, 3a, and 3b; Part V, line 1; Part V, Section B, line 1e; Part V, Section D, lines 5, 6, and 8; and Part V, Section E, lines 2, 5, and 6. Also complete this part for any additional information. (See instructions.)

**PART IV, SECTION A, LINE 1:**

THE FILING ORGANIZATION IS THE PARENT FOR A NUMBER OF AFFILIATES, ALL OF WHICH ADHERE TO THE SAME MISSION AND ALL OF WHICH SHARE MOST, IF NOT ALL, BOARD MEMBERS AND MANAGEMENT EXECUTIVES. A FULL LIST OF AFFILIATED ORGANIZATIONS FOR WHICH THE ORGANIZATION IS THE PARENT IS REPORTED ON SCHEDULE R, PART II. THE PARENT IS INACTIVE EXCEPT AS A HOLDER OF ASSETS WHICH ARE TO BE UTILIZED IN A LOW-INCOME HOUSING COMMUNITY. COMMON MANAGEMENT OVERSEES ALL OF THE SCHEDULE R REPORTED AFFILIATED ORGANIZATIONS.



HUMANGOOD EAST FKA PHILA. PRESBYTERY  
HOMES AND SVC. FOR THE AGING

Schedule A (Form 990 or 990-EZ)

**Part VI Supplemental Information** (Schedule A, Part I, Line 12g - Information regarding supported organizations (continuation))

(i) Name of supported organization	(ii) EIN	(iii) Type of organization (described on lines 1-10 above)	(iv) Is the organization listed in your governing document?		(v) Amount of monetary support	(vi) Amount of other support
			Yes	No		
OLD CITY PRESBYTERIAN APARTM	23-2778769	10		X	0.	0.
PRESBYTERIAN APARTMENTS AT 58TH	23-2605582	10		X	0.	0.
GERMANTOWN INTERFAITH HOUSING,	23-2211053	10		X	0.	0.
MAKEMIE AT WHITELAND	20-8523793	10		X	0.	0.
AVENUE OF THE ARTS PRESBYTERIAN - PSC	23-3027613	10		X	0.	0.
SOUTH PHILADELPHIA PRESBYTERIAN APARTM	46-0477271	10		X	0.	0.
GREENWAY PRESBYTERIAN APARTM	86-1063722	10		X	0.	0.
MANTUA PRESBYTERIAN APARTMENTS, INC.	20-5006775	10		X	0.	0.
GRACE COURT, INC.	23-2299928	10		X	0.	0.
PHILADELPHIA PRESBYTERY HOMES WC	23-7816031	10		X	0.	0.
PASCHALL SENIOR HOUSING, INC.	20-5957419	10		X	0.	0.
<b>Continuation Totals</b>						

SCHEDULE D (Form 990)

Department of the Treasury Internal Revenue Service

Supplemental Financial Statements

Complete if the organization answered "Yes" on Form 990, Part IV, line 6, 7, 8, 9, 10, 11a, 11b, 11c, 11d, 11e, 11f, 12a, or 12b. Attach to Form 990.

Go to www.irs.gov/Form990 for instructions and the latest information.

OMB No. 1545-0047

2020

Open to Public Inspection

Name of the organization HUMANGOOD EAST FKA PHILA. PRESBYTERY HOMES AND SVC. FOR THE AGING Employer identification number 23-2828862

Part I Organizations Maintaining Donor Advised Funds or Other Similar Funds or Accounts. Complete if the organization answered "Yes" on Form 990, Part IV, line 6.

Table with 3 columns: Question, (a) Donor advised funds, (b) Funds and other accounts. Rows include total number at end of year, aggregate value of contributions, grants, and end of year, and two yes/no questions about donor property and grant fund usage.

Part II Conservation Easements. Complete if the organization answered "Yes" on Form 990, Part IV, line 7.

Table with 3 columns: Question, (a) Donor advised funds, (b) Funds and other accounts. Rows include purpose of easements, lines 2a-2d, number of modified easements, states where located, monitoring policy, staff hours, expenses, and requirements of section 170(h)(4)(B)(i).

Part III Organizations Maintaining Collections of Art, Historical Treasures, or Other Similar Assets. Complete if the organization answered "Yes" on Form 990, Part IV, line 8.

Table with 3 columns: Question, (a) Donor advised funds, (b) Funds and other accounts. Rows include 1a) text of footnote for art collection, 1b) amounts for art collection, and 2) amounts for art collection for financial gain.

**Part III Organizations Maintaining Collections of Art, Historical Treasures, or Other Similar Assets** (continued)

- 3 Using the organization's acquisition, accession, and other records, check any of the following that make significant use of its collection items (check all that apply):
- a  Public exhibition
  - b  Scholarly research
  - c  Preservation for future generations
  - d  Loan or exchange program
  - e  Other \_\_\_\_\_
- 4 Provide a description of the organization's collections and explain how they further the organization's exempt purpose in Part XIII.
- 5 During the year, did the organization solicit or receive donations of art, historical treasures, or other similar assets to be sold to raise funds rather than to be maintained as part of the organization's collection?  Yes  No

**Part IV Escrow and Custodial Arrangements.** Complete if the organization answered "Yes" on Form 990, Part IV, line 9, or reported an amount on Form 990, Part X, line 21.

- 1a Is the organization an agent, trustee, custodian or other intermediary for contributions or other assets not included on Form 990, Part X?  Yes  No
- b If "Yes," explain the arrangement in Part XIII and complete the following table:
- |                                 | Amount |
|---------------------------------|--------|
| c Beginning balance             | 1c     |
| d Additions during the year     | 1d     |
| e Distributions during the year | 1e     |
| f Ending balance                | 1f     |
- 2a Did the organization include an amount on Form 990, Part X, line 21, for escrow or custodial account liability?  Yes  No
- b If "Yes," explain the arrangement in Part XIII. Check here if the explanation has been provided on Part XIII

**Part V Endowment Funds.** Complete if the organization answered "Yes" on Form 990, Part IV, line 10.

	(a) Current year	(b) Prior year	(c) Two years back	(d) Three years back	(e) Four years back
1a Beginning of year balance					
b Contributions					
c Net investment earnings, gains, and losses					
d Grants or scholarships					
e Other expenditures for facilities and programs					
f Administrative expenses					
g End of year balance					

- 2 Provide the estimated percentage of the current year end balance (line 1g, column (a)) held as:
- a Board designated or quasi-endowment  \_\_\_\_\_ %
  - b Permanent endowment  \_\_\_\_\_ %
  - c Term endowment  \_\_\_\_\_ %
- The percentages on lines 2a, 2b, and 2c should equal 100%.
- 3a Are there endowment funds not in the possession of the organization that are held and administered for the organization by:
- |  | Yes    | No |
|--|--------|----|
| (i) Unrelated organizations  | 3a(i)  |    |
| (ii) Related organizations   | 3a(ii) |    |
| b If "Yes" on line 3a(ii), are the related organizations listed as required on Schedule R? | 3b     |    |
- 4 Describe in Part XIII the intended uses of the organization's endowment funds.

**Part VI Land, Buildings, and Equipment.**

Complete if the organization answered "Yes" on Form 990, Part IV, line 11a. See Form 990, Part X, line 10.

Description of property	(a) Cost or other basis (investment)	(b) Cost or other basis (other)	(c) Accumulated depreciation	(d) Book value
1a Land				
b Buildings				
c Leasehold improvements				
d Equipment				
e Other				

**Total.** Add lines 1a through 1e. (Column (d) must equal Form 990, Part X, column (B), line 10c.)  0.

**Part VII Investments - Other Securities.**

Complete if the organization answered "Yes" on Form 990, Part IV, line 11b. See Form 990, Part X, line 12.

(a) Description of security or category (including name of security)	(b) Book value	(c) Method of valuation: Cost or end-of-year market value
(1) Financial derivatives .....		
(2) Closely held equity interests .....		
(3) Other .....		
(A) INVESTMENT IN		
(B) PARTNERSHIPS	1,000,100.	COST
(C)		
(D)		
(E)		
(F)		
(G)		
(H)		
<b>Total.</b> (Col. (b) must equal Form 990, Part X, col. (B) line 12.) ▶	1,000,100.	

**Part VIII Investments - Program Related.**

Complete if the organization answered "Yes" on Form 990, Part IV, line 11c. See Form 990, Part X, line 13.

(a) Description of investment	(b) Book value	(c) Method of valuation: Cost or end-of-year market value
(1)		
(2)		
(3)		
(4)		
(5)		
(6)		
(7)		
(8)		
(9)		
<b>Total.</b> (Col. (b) must equal Form 990, Part X, col. (B) line 13.) ▶		

**Part IX Other Assets.**

Complete if the organization answered "Yes" on Form 990, Part IV, line 11d. See Form 990, Part X, line 15.

(a) Description	(b) Book value
(1) DUE FROM AFFILIATES	9,414,647.
(2)	
(3)	
(4)	
(5)	
(6)	
(7)	
(8)	
(9)	
<b>Total.</b> (Column (b) must equal Form 990, Part X, col. (B) line 15.) ▶	9,414,647.

**Part X Other Liabilities.**

Complete if the organization answered "Yes" on Form 990, Part IV, line 11e or 11f. See Form 990, Part X, line 25.

1. (a) Description of liability	(b) Book value
(1) Federal income taxes	
(2) DUE TO AFFILIATES	560.
(3)	
(4)	
(5)	
(6)	
(7)	
(8)	
(9)	
<b>Total.</b> (Column (b) must equal Form 990, Part X, col. (B) line 25.) ▶	560.

2. Liability for uncertain tax positions. In Part XIII, provide the text of the footnote to the organization's financial statements that reports the organization's liability for uncertain tax positions under FASB ASC 740. Check here if the text of the footnote has been provided in Part XIII ...

**Part XI Reconciliation of Revenue per Audited Financial Statements With Revenue per Return.**

Complete if the organization answered "Yes" on Form 990, Part IV, line 12a.

<b>1</b>	Total revenue, gains, and other support per audited financial statements	<b>1</b>	42,684.
<b>2</b>	Amounts included on line 1 but not on Form 990, Part VIII, line 12:		
<b>a</b>	Net unrealized gains (losses) on investments	<b>2a</b>	
<b>b</b>	Donated services and use of facilities	<b>2b</b>	
<b>c</b>	Recoveries of prior year grants	<b>2c</b>	
<b>d</b>	Other (Describe in Part XIII.)	<b>2d</b>	
<b>e</b>	Add lines <b>2a</b> through <b>2d</b>	<b>2e</b>	0.
<b>3</b>	Subtract line <b>2e</b> from line <b>1</b>	<b>3</b>	42,684.
<b>4</b>	Amounts included on Form 990, Part VIII, line 12, but not on line 1:		
<b>a</b>	Investment expenses not included on Form 990, Part VIII, line 7b	<b>4a</b>	
<b>b</b>	Other (Describe in Part XIII.)	<b>4b</b>	
<b>c</b>	Add lines <b>4a</b> and <b>4b</b>	<b>4c</b>	0.
<b>5</b>	Total revenue. Add lines <b>3</b> and <b>4c</b> . (This must equal Form 990, Part I, line 12.)	<b>5</b>	42,684.

**Part XII Reconciliation of Expenses per Audited Financial Statements With Expenses per Return.**

Complete if the organization answered "Yes" on Form 990, Part IV, line 12a.

<b>1</b>	Total expenses and losses per audited financial statements	<b>1</b>	21,753.
<b>2</b>	Amounts included on line 1 but not on Form 990, Part IX, line 25:		
<b>a</b>	Donated services and use of facilities	<b>2a</b>	
<b>b</b>	Prior year adjustments	<b>2b</b>	
<b>c</b>	Other losses	<b>2c</b>	
<b>d</b>	Other (Describe in Part XIII.)	<b>2d</b>	
<b>e</b>	Add lines <b>2a</b> through <b>2d</b>	<b>2e</b>	0.
<b>3</b>	Subtract line <b>2e</b> from line <b>1</b>	<b>3</b>	21,753.
<b>4</b>	Amounts included on Form 990, Part IX, line 25, but not on line 1:		
<b>a</b>	Investment expenses not included on Form 990, Part VIII, line 7b	<b>4a</b>	
<b>b</b>	Other (Describe in Part XIII.)	<b>4b</b>	
<b>c</b>	Add lines <b>4a</b> and <b>4b</b>	<b>4c</b>	0.
<b>5</b>	Total expenses. Add lines <b>3</b> and <b>4c</b> . (This must equal Form 990, Part I, line 18.)	<b>5</b>	21,753.

**Part XIII Supplemental Information.**

Provide the descriptions required for Part II, lines 3, 5, and 9; Part III, lines 1a and 4; Part IV, lines 1b and 2b; Part V, line 4; Part X, line 2; Part XI, lines 2d and 4b; and Part XII, lines 2d and 4b. Also complete this part to provide any additional information.

PART X, LINE 2:

THE CORPORATION ACCOUNTS FOR UNCERTAINTY IN INCOME TAXES USING A  
 RECOGNITION THRESHOLD OF MORE-LIKELY-THAN-NOT TO BE SUSTAINED UPON  
 EXAMINATION BY THE APPROPRIATE TAXING AUTHORITY. MEASUREMENT OF THE TAX  
 UNCERTAINTY OCCURS IF THE RECOGNITION THRESHOLD IS MET. MANAGEMENT  
 DETERMINED THERE WERE NO TAX UNCERTAINTIES THAT MET THE RECOGNITION  
 THRESHOLD IN 2020 AND 2019.

**SCHEDULE J  
(Form 990)**

**Compensation Information**

OMB No. 1545-0047

**2020**

Open to Public Inspection

For certain Officers, Directors, Trustees, Key Employees, and Highest Compensated Employees

▶ Complete if the organization answered "Yes" on Form 990, Part IV, line 23.

▶ Attach to Form 990.

▶ Go to [www.irs.gov/Form990](http://www.irs.gov/Form990) for instructions and the latest information.

Department of the Treasury  
Internal Revenue Service

Name of the organization **HUMANGOOD EAST FKA PHILA. PRESBYTERY  
HOMES AND SVC. FOR THE AGING**

Employer identification number  
**23-2828862**

**Part I Questions Regarding Compensation**

**1a** Check the appropriate box(es) if the organization provided any of the following to or for a person listed on Form 990, Part VII, Section A, line 1a. Complete Part III to provide any relevant information regarding these items.

- |  |  |
|--|--|
| <input type="checkbox"/> First-class or charter travel             | <input type="checkbox"/> Housing allowance or residence for personal use   |
| <input type="checkbox"/> Travel for companions                     | <input type="checkbox"/> Payments for business use of personal residence   |
| <input type="checkbox"/> Tax indemnification and gross-up payments | <input type="checkbox"/> Health or social club dues or initiation fees     |
| <input type="checkbox"/> Discretionary spending account            | <input type="checkbox"/> Personal services (such as maid, chauffeur, chef) |

**b** If any of the boxes on line 1a are checked, did the organization follow a written policy regarding payment or reimbursement or provision of all of the expenses described above? If "No," complete Part III to explain .....

**2** Did the organization require substantiation prior to reimbursing or allowing expenses incurred by all directors, trustees, and officers, including the CEO/Executive Director, regarding the items checked on line 1a? .....

**3** Indicate which, if any, of the following the organization used to establish the compensation of the organization's CEO/Executive Director. Check all that apply. Do not check any boxes for methods used by a related organization to establish compensation of the CEO/Executive Director, but explain in Part III.

- |  |  |
|--|--|
| <input type="checkbox"/> Compensation committee              | <input type="checkbox"/> Written employment contract                     |
| <input type="checkbox"/> Independent compensation consultant | <input type="checkbox"/> Compensation survey or study                    |
| <input type="checkbox"/> Form 990 of other organizations     | <input type="checkbox"/> Approval by the board or compensation committee |

**4** During the year, did any person listed on Form 990, Part VII, Section A, line 1a, with respect to the filing organization or a related organization:

- a** Receive a severance payment or change-of-control payment? .....
- b** Participate in or receive payment from a supplemental nonqualified retirement plan? .....
- c** Participate in or receive payment from an equity-based compensation arrangement? .....
- If "Yes" to any of lines 4a-c, list the persons and provide the applicable amounts for each item in Part III.

**Only section 501(c)(3), 501(c)(4), and 501(c)(29) organizations must complete lines 5-9.**

**5** For persons listed on Form 990, Part VII, Section A, line 1a, did the organization pay or accrue any compensation contingent on the revenues of:

- a** The organization? .....
- b** Any related organization? .....
- If "Yes" on line 5a or 5b, describe in Part III.

**6** For persons listed on Form 990, Part VII, Section A, line 1a, did the organization pay or accrue any compensation contingent on the net earnings of:

- a** The organization? .....
- b** Any related organization? .....
- If "Yes" on line 6a or 6b, describe in Part III.

**7** For persons listed on Form 990, Part VII, Section A, line 1a, did the organization provide any nonfixed payments not described on lines 5 and 6? If "Yes," describe in Part III .....

**8** Were any amounts reported on Form 990, Part VII, paid or accrued pursuant to a contract that was subject to the initial contract exception described in Regulations section 53.4958-4(a)(3)? If "Yes," describe in Part III .....

**9** If "Yes" on line 8, did the organization also follow the rebuttable presumption procedure described in Regulations section 53.4958-6(c)? .....

	Yes	No
<b>1a</b>		
<b>1b</b>		
<b>2</b>		
<b>3</b>		
<b>4a</b>	X	
<b>4b</b>	X	
<b>4c</b>		X
<b>5a</b>		X
<b>5b</b>		X
<b>6a</b>		X
<b>6b</b>		X
<b>7</b>		X
<b>8</b>		X
<b>9</b>		

LHA For Paperwork Reduction Act Notice, see the Instructions for Form 990.

Schedule J (Form 990) 2020

HUMANGOOD EAST FKA PHILA. PRESBYTERY  
HOMES AND SVC. FOR THE AGING

Schedule J (Form 990) 2020

23-2828862

Page 2

**Part II Officers, Directors, Trustees, Key Employees, and Highest Compensated Employees.** Use duplicate copies if additional space is needed.

For each individual whose compensation must be reported on Schedule J, report compensation from the organization on row (i) and from related organizations, described in the instructions, on row (ii). Do not list any individuals that aren't listed on Form 990, Part VII.

**Note:** The sum of columns (B)(i)-(iii) for each listed individual must equal the total amount of Form 990, Part VII, Section A, line 1a, applicable column (D) and (E) amounts for that individual.

(A) Name and Title		(B) Breakdown of W-2 and/or 1099-MISC compensation			(C) Retirement and other deferred compensation	(D) Nontaxable benefits	(E) Total of columns (B)(i)-(D)	(F) Compensation in column (B) reported as deferred on prior Form 990
		(i) Base compensation	(ii) Bonus & incentive compensation	(iii) Other reportable compensation				
(1) JOHN H. COCHRANE, III PRESIDENT/CHIEF EXECUTIVE OFFICER	(i)	0.	0.	0.	0.	0.	0.	0.
	(ii)	519,221.	471,192.	25,360.	11,400.	15,134.	1,042,307.	0.
(2) DANIEL OGUS CHIEF OPERATING OFFICER	(i)	0.	0.	0.	0.	0.	0.	0.
	(ii)	421,927.	309,521.	37,942.	11,400.	18,842.	799,632.	0.
(3) PAMELA CLAASSEN FMR CFO (END 12/19); CH CAP STRAT(1/20	(i)	0.	0.	0.	0.	0.	0.	0.
	(ii)	290,772.	217,061.	21,309.	11,400.	14,236.	554,778.	0.
(4) FLEMING MENG CHIEF INFORMATION OFFICER	(i)	0.	0.	0.	0.	0.	0.	0.
	(ii)	325,961.	171,849.	0.	11,400.	18,456.	527,666.	0.
(5) JUDEE M. BAVARIA PRESIDENT & CEO (UNTIL 12/31/2019)	(i)	0.	0.	0.	0.	0.	0.	0.
	(ii)	114,496.	0.	400,000.	0.	0.	514,496.	0.
(6) ANCEL ROMERO CHIEF EXECUTIVE-AFFORD. HS	(i)	0.	0.	0.	0.	0.	0.	0.
	(ii)	302,340.	116,812.	39,224.	11,400.	14,767.	484,543.	0.
(7) ANDREW MCDONALD CHIEF FINANCIAL OFFICER	(i)	0.	0.	0.	0.	0.	0.	0.
	(ii)	296,552.	82,790.	0.	11,400.	18,358.	409,100.	0.
(8) JENNIFER S. KAPPEN VP FINANCE & RISK MGMT	(i)	0.	0.	0.	0.	0.	0.	0.
	(ii)	273,923.	61,178.	41,386.	8,550.	21,998.	407,035.	38,115.
(9) TROY KEACH VP HUMAN RESOURCES	(i)	0.	0.	0.	0.	0.	0.	0.
	(ii)	250,416.	115,440.	9,173.	11,400.	1,657.	388,086.	0.
(10) BETHANY GHASSEMI CHIEF LEGAL COUNSEL	(i)	0.	0.	0.	0.	0.	0.	0.
	(ii)	234,808.	77,000.	6,659.	11,400.	784.	330,651.	0.
	(i)							
	(ii)							
	(i)							
	(ii)							
	(i)							
	(ii)							
	(i)							
	(ii)							

**Part III Supplemental Information**

Provide the information, explanation, or descriptions required for Part I, lines 1a, 1b, 3, 4a, 4b, 4c, 5a, 5b, 6a, 6b, 7, and 8, and for Part II. Also complete this part for any additional information.

**PART I, LINE 3:**

COMPENSATION OF THE CEO IS DETERMINED BY HUMANGOOD USING THE FOLLOWING  
METHODS: COMPENSATION COMMITTEE, COMPENSATION CONSULTANT, FORM 990 OF OTHER  
ORGANIZATIONS, COMPENSATION SURVEY/STUDY AND APPROVAL BY THE  
BOARD/COMPENSATION COMMITTEE.

**PART I, LINES 4A-B:**

CERTAIN OFFICERS AND KEY EMPLOYEES OF HUMANGOOD PENNSYLVANIA PARTICIPATED  
IN A NONQUALIFIED DEFERRED COMPENSATION PLAN WHICH PROVIDES SELECT  
EXECUTIVES WITH THE OPPORTUNITY TO MAKE VOLUNTARY DEFERRALS OR TO RECEIVE  
TAX DEFERRED CONTRIBUTIONS FROM HUMANGOOD PENNSYLVANIA F/K/A PHILADELPHIA  
PRESBYTERY HOMES, INC. DURING 2020, THE PLAN WAS TERMINATED AND FULL PAYOUT  
WAS MADE TO ONE EMPLOYEE IN THE AMOUNT OF \$38,115. DUE TO THE PLAN BEING  
TERMINATED NO CONTRIBUTIONS WERE MADE DURING 2020.

IN 2020, HUMANGOOD PENNSYLVANIA F/K/A PHILADELPHIA PRESBYTERY HOMES, INC.  
MADE A SEVERANCE PAYMENT TO EXECUTIVE PRESIDENT & CEO, JUDEE BAVARIA, IN  
THE AMOUNT OF \$400,000 UPON DEPARTURE FROM THE ORGANIZATION.



**SCHEDULE O**  
**(Form 990 or 990-EZ)**

Department of the Treasury  
Internal Revenue Service

**Supplemental Information to Form 990 or 990-EZ**

Complete to provide information for responses to specific questions on  
Form 990 or 990-EZ or to provide any additional information.

▶ Attach to Form 990 or 990-EZ.

▶ Go to [www.irs.gov/Form990](http://www.irs.gov/Form990) for the latest information.

OMB No. 1545-0047

**2020**

Open to Public  
Inspection

Name of the organization

HUMANGOOD EAST FKA PHILA. PRESBYTERY  
HOMES AND SVC. FOR THE AGING

Employer identification number  
23-2828862

**FORM 990**

ON JUNE 30, 2019, THE FILING ORGANIZATION AFFILIATED WITH HUMANGOOD, A CALIFORNIA BASED SENIOR LIVING NON-PROFIT. THIS AFFILIATION BROUGHT TWO NON-PROFIT SYSTEMS TOGETHER TO CONTINUE INSPIRING PEOPLE TO LIVE THEIR BEST LIVES POSSIBLE. AS PART OF THE AFFILIATION, THE NAMES OF THE LEGAL ENTITY PHILADELPHIA PRESBYTERY HOMES, INC. AND THIS ORGANIZATION, PHILADELPHIA PRESBYTERY HOMES AND SERVICES FOR THE AGING, WERE CHANGED TO HUMANGOOD PENNSYLVANIA AND HUMANGOOD EAST, RESPECTIVELY, TO ENHANCE THE OVERALL BRANDING OF THE COMBINED SENIOR LIVING ORGANIZATION.

**FORM 990, PART VI, SECTION A, LINE 6:**

HUMANGOOD CORNERSTONE (EIN 30-0184304), A CALIFORNIA NONPROFIT PUBLIC BENEFIT CORPORATION, IS THE SOLE MEMBER OF HUMANGOOD EAST FKA PHILADELPHIA PRESBYTERY HOMES AND SERVICES FOR THE AGING.

**FORM 990, PART VI, SECTION A, LINE 7A:**

THE SOLE MEMBER OF HUMANGOOD EAST FKA PHILADELPHIA PRESBYTERY HOMES AND SERVICES FOR THE AGING, HUMANGOOD CORNERSTONE, HAS THE RIGHT TO VOTE ON THE ELECTION AND REMOVAL OF DIRECTORS.

**FORM 990, PART VI, SECTION A, LINE 7B:**

PARENT ENTITY HUMANGOOD CORNERSTONE MUST APPROVE ACTIVITIES OF THE FILING ORGANIZATION SUCH AS THE FOLLOWING:

**-APPOINTMENT OF AUDIT COMMITTEE OR STANDING COMMITTEE MEMBERS**

Name of the organization	HUMANGOOD EAST FKA PHILA. PRESBYTERY HOMES AND SVC. FOR THE AGING	Employer identification number	23-2828862
--------------------------	--	--------------------------------	------------

-ELECTION AND REMOVAL OF DIRECTORS

-DISPOSITIONS OF ALL OR SUBSTANTIALLY ALL OF THE ASSETS OF THE CORPORATION

-ANY MERGER AND THE PRINCIPAL TERMS AND ANY AMENDMENT OF THOSE TERMS

-ANY ELECTION TO DISSOLVE THE CORPORATION

FORM 990, PART VI, SECTION B, LINE 11B:

THE FORM 990 IS REVIEWED BY THE CFO AND FURNISHED TO THE BOARD OF DIRECTORS FOR REVIEW PRIOR TO FILING WITH THE IRS.

FORM 990, PART VI, SECTION B, LINE 12C:

EVERY YEAR, THE ORGANIZATION'S DIRECTORS AND OFFICERS ARE ASKED TO COMPLETE A CONFLICT OF INTEREST DISCLOSURE ALONG WITH A STATEMENT OF COMMITMENT.

IN CONNECTION WITH ANY ACTUAL OR POSSIBLE CONFLICT OF INTEREST, DIRECTORS AND OFFICERS MUST DISCLOSE THE EXISTENCE OF THE FINANCIAL INTEREST AND ALL MATERIAL FACTS RELATED THERETO TO THE DIRECTORS AND MEMBERS OF COMMITTEES.

A VOTE IS TAKEN OUTSIDE THE PRESENCE OF THE INDIVIDUAL IN QUESTION TO DETERMINE IF AN ACTUAL CONFLICT EXISTS. IF THE BOARD OR COMMITTEE HAS REASONABLE CAUSE TO BELIEVE A MEMBER HAS FAILED TO DISCLOSE ACTUAL OR POSSIBLE CONFLICTS OF INTEREST, IT SHALL INFORM THE MEMBER OF THE BASIS FOR SUCH BELIEF AND AFFORD THE MEMBER AN OPPORTUNITY TO EXPLAIN THE ALLEGED FAILURE TO DISCLOSE.

IF, AFTER HEARING THE RESPONSE OF THE MEMBER, THE BOARD OR COMMITTEE DETERMINES THAT THE MEMBER HAS IN FACT FAILED TO DISCLOSE AN ACTUAL OR POSSIBLE CONFLICT OF INTEREST, IT SHALL TAKE APPROPRIATE DISCIPLINARY AND CORRECTIVE ACTION.

Name of the organization	HUMANGOOD EAST FKA PHILA. PRESBYTERY HOMES AND SVC. FOR THE AGING	Employer identification number	23-2828862
--------------------------	--	--------------------------------	------------

FORM 990, PART VI, SECTION B, LINE 15:

COMPENSATION OF THE PRESIDENT, COO AND CFO OF HUMANGOOD IS REVIEWED ANNUALLY FOR MARKET COMPETITIVENESS BY A COMPENSATION COMMITTEE OF THE HUMANGOOD BOARD. COMPENSATION OF OTHER OFFICERS AND KEY EMPLOYEES IS REVIEWED BY THE CEO WITH DISCLOSURE TO THE COMPENSATION COMMITTEE. THE HUMANGOOD BOARD MEMBERS AND PRESIDENT ARE INDEPENDENT WITH RESPECT TO THE INDIVIDUALS WHOSE COMPENSATION IS BEING REVIEWED, THE HUMANGOOD BOARD AND PRESIDENT RELY UPON WAGE AND SALARY STUDIES AND/OR REGULAR REVIEW BY A COMPENSATION CONSULTANT TO PROVIDE COMPARABLE SALARY DATA FOR THEIR CONSIDERATION. DECISIONS REGARDING COMPENSATION ARE DOCUMENTED ON A CONTEMPORANEOUS BASIS.

FORM 990, PART VI, SECTION C, LINE 19:

THE GOVERNING DOCUMENTS AND FINANCIAL STATEMENTS ARE AVAILABLE FOR INSPECTION UPON REQUEST.

FORM 990, PART VII:

CERTAIN BOARD MEMBERS RECEIVED A STIPEND FOR 2020 FOR THEIR BOARD AND COMMITTEE WORK RELATED TO HUMANGOOD. NO COMPENSATION IS PAID TO ANY BOARD MEMBERS FOR THEIR ROLE ON THE FILING ORGANIZATION'S BOARD.

BOARD STIPENDS:

COMMENCING TWO YEARS AFTER THE MAY 1, 2016 AFFILIATION OF HUMANGOOD NORCAL AND HUMANGOOD SOCIAL, THE SEVEN-MEMBER HUMANGOOD BOARD BEGAN RECEIVING STIPENDS FOR THEIR SERVICE TO THE TOP GOVERNING ORGANIZATION, HUMANGOOD. AN EVALUATION WAS PERFORMED OF SIMILARLY COMPLEX NON-PROFIT ORGANIZATIONS TO DETERMINE THE REASONABLENESS OF THE STIPEND AMOUNT FOR THE HOURS COMMITTED TO GOVERNANCE. NO REMUNERATION IS ATTRIBUTABLE TO

Name of the organization HUMANGOOD EAST FKA PHILA. PRESBYTERY HOMES AND SVC. FOR THE AGING	Employer identification number 23-2828862
--	--

SERVICE BY THESE SEVEN BOARD MEMBERS ON BOARDS OF OTHER HUMANGOOD  
AFFILIATES. THE REMUNERATION IS TAXABLE TO EACH OF THE MEMBERS AND  
REPORTED ANNUALLY ON FORM 1099 IN ADDITION TO DISCLOSURE IN THE FORM  
990. BASED ON RECEIVING THIS REMUNERATION AND THE ADVICE OF TAX  
CONSULTANTS, THESE BOARD MEMBERS ARE NOT REFLECTED AS BEING INDEPENDENT  
DIRECTORS.

**SCHEDULE R  
(Form 990)**

Department of the Treasury  
Internal Revenue Service

**Related Organizations and Unrelated Partnerships**

▶ Complete if the organization answered "Yes" on Form 990, Part IV, line 33, 34, 35b, 36, or 37.

▶ Attach to Form 990.

▶ Go to [www.irs.gov/Form990](http://www.irs.gov/Form990) for instructions and the latest information.

OMB No. 1545-0047

**2020**

Open to Public Inspection

Name of the organization **HUMANGOOD EAST FKA PHILA. PRESBYTERY HOMES AND SVC. FOR THE AGING** Employer identification number **23-2828862**

**Part I Identification of Disregarded Entities.** Complete if the organization answered "Yes" on Form 990, Part IV, line 33.

(a) Name, address, and EIN (if applicable) of disregarded entity	(b) Primary activity	(c) Legal domicile (state or foreign country)	(d) Total income	(e) End-of-year assets	(f) Direct controlling entity

**Part II Identification of Related Tax-Exempt Organizations.** Complete if the organization answered "Yes" on Form 990, Part IV, line 34, because it had one or more related tax-exempt organizations during the tax year.

(a) Name, address, and EIN of related organization	(b) Primary activity	(c) Legal domicile (state or foreign country)	(d) Exempt Code section	(e) Public charity status (if section 501(c)(3))	(f) Direct controlling entity	(g) Section 512(b)(13) controlled entity?	
						Yes	No
HUMANGOOD PENNSYLVANIA FKA PHILADELPHIA PRESBYTERY HOMES, INC. - 23-1547587, 2000 JOSHUA ROAD, LAFAYETTE HILL, PA 19444	PROVIDE SENIOR LIVING OPTIONS, FUNDRAISING & SUPPORT	PENNSYLVANIA	501(C)(3)	LINE 10	HUMANGOOD EAST FKA PHILADELPHIA PRESBYTERY HOMES	X	
PHILADELPHIA PRESBYTERY APARTMENTS, INC. - 23-2081651, 2000 JOSHUA ROAD, LAFAYETTE HILL, PA 19444	LOW INCOME HOUSING FOR SENIOR CITIZENS AND HANDICAPPED	PENNSYLVANIA	501(C)(3)	LINE 10	HUMANGOOD EAST FKA PHILADELPHIA PRESBYTERY HOMES	X	
PHILADELPHIA PRESBYTERY APARTMENTS OF MORRISVILLE, INC. - 22-2466663, 2000 JOSHUA ROAD, LAFAYETTE HILL, PA 19444	LOW INCOME HOUSING FOR SENIOR CITIZENS AND HANDICAPPED	PENNSYLVANIA	501(C)(3)	LINE 10	HUMANGOOD EAST FKA PHILADELPHIA PRESBYTERY HOMES	X	
TIOGA PRESBYTERIAN APARTMENTS, INC. - 23-2763902, 2000 JOSHUA ROAD, LAFAYETTE HILL, PA 19444	LOW INCOME HOUSING FOR SENIOR CITIZENS AND HANDICAPPED	PENNSYLVANIA	501(C)(3)	LINE 10	HUMANGOOD EAST FKA PHILADELPHIA PRESBYTERY HOMES	X	

For Paperwork Reduction Act Notice, see the Instructions for Form 990.

Schedule R (Form 990) 2020

SEE PART VII FOR CONTINUATIONS

HUMANGOOD EAST FKA PHILA. PRESBYTERY  
HOMES AND SVC. FOR THE AGING

Schedule R (Form 990)

23-2828862

**Part II** Continuation of Identification of Related Tax-Exempt Organizations

(a) Name, address, and EIN of related organization	(b) Primary activity	(c) Legal domicile (state or foreign country)	(d) Exempt Code section	(e) Public charity status (if section 501(c)(3))	(f) Direct controlling entity	(g) Section 512(b)(13) controlled organization?	
						Yes	No
SOUTHWEST PHILADELPHIA PRESBYTERY APARTMENTS, INC. - 23-2700459, 2000 JOSHUA ROAD, LAFAYETTE HILL, PA 19444	LOW INCOME HOUSING FOR SENIOR CITIZENS AND HANDICAPPED	PENNSYLVANIA	501(C)(3)	LINE 10	HUMANGOOD EAST FKA PHILADELPHIA PRESBYTERY HOMES	X	
OLD CITY PRESBYTERIAN APARTMENTS, INC. - 23-2778769, 2000 JOSHUA ROAD, LAFAYETTE HILL, PA 19444	LOW INCOME HOUSING FOR SENIOR CITIZENS AND HANDICAPPED	PENNSYLVANIA	501(C)(3)	LINE 10	HUMANGOOD EAST FKA PHILADELPHIA PRESBYTERY HOMES	X	
PRESBYTERIAN APARTMENTS AT 58TH STREET, INC. - 23-2605582, 2000 JOSHUA ROAD, LAFAYETTE HILL, PA 19444	LOW INCOME HOUSING FOR SENIOR CITIZENS AND HANDICAPPED	PENNSYLVANIA	501(C)(3)	LINE 10	HUMANGOOD EAST FKA PHILADELPHIA PRESBYTERY HOMES	X	
GERMANTOWN INTERFAITH HOUSING, INC. - 23-2211053, 2000 JOSHUA ROAD, LAFAYETTE HILL, PA 19444	LOW INCOME HOUSING FOR SENIOR CITIZENS AND HANDICAPPED	PENNSYLVANIA	501(C)(3)	LINE 10	HUMANGOOD EAST FKA PHILADELPHIA PRESBYTERY HOMES	X	
MAKEMIE AT WHITELAND - 20-8523793 2000 JOSHUA ROAD LAFAYETTE HILL, PA 19444	INACTIVE	PENNSYLVANIA	501(C)(3)	LINE 10	HUMANGOOD EAST FKA PHILADELPHIA PRESBYTERY HOMES	X	
AVENUE OF THE ARTS PRESBYTERIAN - PSC APARTMENTS, INC. - 23-3027613, 2000 JOSHUA ROAD, LAFAYETTE HILL, PA 19444	LOW INCOME HOUSING FOR SENIOR CITIZENS AND HANDICAPPED	PENNSYLVANIA	501(C)(3)	LINE 10	HUMANGOOD EAST FKA PHILADELPHIA PRESBYTERY HOMES	X	
BALA PRESBYTERIAN HOME FOUNDATION - 23-2834398, 2000 JOSHUA ROAD, LAFAYETTE HILL, PA 19444	FUNDRAISING & SUPPORT	PENNSYLVANIA	501(C)(3)	LINE 12B, II	HUMANGOOD EAST FKA PHILADELPHIA PRESBYTERY HOMES	X	
SOUTH PHILADELPHIA PRESBYTERIAN APARTMENTS, INC. - 46-0477271, 2000 JOSHUA ROAD, LAFAYETTE HILL, PA 19444	LOW INCOME HOUSING FOR SENIOR CITIZENS AND HANDICAPPED	PENNSYLVANIA	501(C)(3)	LINE 10	HUMANGOOD EAST FKA PHILADELPHIA PRESBYTERY HOMES	X	
GREENWAY PRESBYTERIAN APARTMENTS, INC. - 86-1063722, 2000 JOSHUA ROAD, LAFAYETTE HILL, PA 19444	LOW INCOME HOUSING FOR SENIOR CITIZENS AND HANDICAPPED	PENNSYLVANIA	501(C)(3)	LINE 10	HUMANGOOD EAST FKA PHILADELPHIA PRESBYTERY HOMES	X	
MANTUA PRESBYTERIAN APARTMENTS, INC. - 20-5006775, 2000 JOSHUA ROAD, LAFAYETTE HILL, PA 19444	LOW INCOME HOUSING FOR SENIOR CITIZENS AND HANDICAPPED	PENNSYLVANIA	501(C)(3)	LINE 10	HUMANGOOD EAST FKA PHILADELPHIA PRESBYTERY HOMES	X	
SOUTHWEST PHILADELPHIA NEIGHBORHOOD RENEWAL PROGRAM - 23-3066741, 2000 JOSHUA ROAD, LAFAYETTE HILL, PA 19444	INACTIVE	PENNSYLVANIA	501(C)(3)	PF	HUMANGOOD EAST FKA PHILADELPHIA PRESBYTERY HOMES	X	
PRESBYSERVICES - 23-3000326 2000 JOSHUA ROAD LAFAYETTE HILL, PA 19444	MASTER PAYROLL COMPANY	PENNSYLVANIA	501(C)(3)	LINE 12B, II	HUMANGOOD EAST FKA PHILADELPHIA PRESBYTERY HOMES	X	

HUMANGOOD EAST FKA PHILA. PRESBYTERY  
HOMES AND SVC. FOR THE AGING

Schedule R (Form 990)

23-2828862

**Part II** Continuation of Identification of Related Tax-Exempt Organizations

(a) Name, address, and EIN of related organization	(b) Primary activity	(c) Legal domicile (state or foreign country)	(d) Exempt Code section	(e) Public charity status (if section 501(c)(3))	(f) Direct controlling entity	(g) Section 512(b)(13) controlled organization?	
						Yes	No
GRACE COURT, INC. - 23-2299928 2000 JOSHUA ROAD LAFAYETTE HILL, PA 19444	LOW INCOME HOUSING FOR SENIOR CITIZENS AND HANDICAPPED	PENNSYLVANIA	501(C)(3)	LINE 10	HUMANGOOD EAST FKA PHILADELPHIA PRESBYTERY HOMES	X	
PHILADELPHIA PRESBYTERY HOMES WC TRUST - 23-7816031, 2000 JOSHUA ROAD, LAFAYETTE HILL, PA 19444	INACTIVE	PENNSYLVANIA	501(C)(3)	LINE 10	HUMANGOOD EAST FKA PHILADELPHIA PRESBYTERY HOMES	X	
THE PRESBYTERIAN HOME AT 58TH STREET - 23-1352513, 2000 JOSHUA ROAD, LAFAYETTE HILL, PA 19444	SUPPORT TO AFFILIATES	PENNSYLVANIA	501(C)(3)	LINE 12B, II	HUMANGOOD EAST FKA PHILADELPHIA PRESBYTERY HOMES	X	
PASCHALL SENIOR HOUSING, INC. - 20-5957419 2000 JOSHUA ROAD LAFAYETTE HILL, PA 19444	LOW INCOME HOUSING FOR SENIOR CITIZENS AND HANDICAPPED	PENNSYLVANIA	501(C)(3)	LINE 10	HUMANGOOD EAST FKA PHILADELPHIA PRESBYTERY HOMES	X	
HUMANGOOD NEVADA DBA LAS VENTANAS RETIREMENT COMMUNITY - 20-0566413, 6120 STONERIDGE MALL ROAD SUITE 100, PLEASANTON, CA 94588	LIFE PLAN COMMUNITY	NEVADA	501(C)(3)	LINE 10	HUMANGOOD CORNERSTONE		X
HUMANGOOD IDAHO DBA TERRACES OF BOISE - 20-3659420, 6120 STONERIDGE MALL ROAD SUITE 100, PLEASANTON, CA 94588	NON-PROFIT RETIREMENT COMMUNITIES	CALIFORNIA	501(C)(3)	LINE 10	HUMANGOOD CORNERSTONE		X
HUMANGOOD FOUNDATION WEST - 23-7039408 6120 STONERIDGE MALL ROAD SUITE 100 PLEASANTON, CA 94588	SUPPORT FOR NON-PROFIT RESIDENTIAL COMMUNITIES	CALIFORNIA	501(C)(3)	LINE 12A, I	HUMANGOOD NORCAL		X
HUMANGOOD FRESNO DBA THE TERRACES AT SAN JOAQUIN GARDENS - 26-0650298, 6120 STONERIDGE MALL ROAD SUITE 100, PLEASANTON,	LIFE PLAN COMMUNITY	CALIFORNIA	501(C)(3)	LINE 10	HUMANGOOD		X
GOOD SHEPHERD SENIOR HOUSING - 26-2704795 6120 STONERIDGE MALL ROAD SUITE 100 PLEASANTON, CA 94588	AFFORDABLE HOUSING	WASHINGTON	501(C)(3)	LINE 10	HUMANGOOD AFFORDABLE HOUSING		X
HUMANGOOD CORNERSTONE - 30-0184304 6120 STONERIDGE MALL ROAD SUITE 100 PLEASANTON, CA 94588	PARENT ORGANIZATION	CALIFORNIA	501(C)(3)	LINE 12B, II	HUMANGOOD		X
REDLANDS SENIOR HOUSING TWO - 31-1539936 6120 STONERIDGE MALL ROAD SUITE 100 PLEASANTON, CA 94588	AFFORDABLE HOUSING	CALIFORNIA	501(C)(3)	LINE 10	HUMANGOOD AFFORDABLE HOUSING		X
HUMANGOOD - 31-1558961 6120 STONERIDGE MALL ROAD SUITE 100 PLEASANTON, CA 94588	PARENT ORGANIZATION	CALIFORNIA	501(C)(3)	LINE 12A, I	N/A		X

HUMANGOOD EAST FKA PHILA. PRESBYTERY  
HOMES AND SVC. FOR THE AGING

Schedule R (Form 990)

23-2828862

**Part II** Continuation of Identification of Related Tax-Exempt Organizations

(a) Name, address, and EIN of related organization	(b) Primary activity	(c) Legal domicile (state or foreign country)	(d) Exempt Code section	(e) Public charity status (if section 501(c)(3))	(f) Direct controlling entity	(g) Section 512(b)(13) controlled organization?	
						Yes	No
BAY VISTA SENIOR HOUSING - 46-0777494 6120 STONERIDGE MALL ROAD SUITE 100 PLEASANTON, CA 94588	AFFORDABLE HOUSING	WASHINGTON	501(C)(3)	LINE 10	HUMANGOOD AFFORDABLE HOUSING		X
HILLCREST SENIOR HOUSING CORP - 76-0801395 6120 STONERIDGE MALL ROAD SUITE 100 PLEASANTON, CA 94588	AFFORDABLE HOUSING	CALIFORNIA	501(C)(3)	LINE 10	HUMANGOOD AFFORDABLE HOUSING		X
JUDSON TERRACE LODGE - 77-0389124 6120 STONERIDGE MALL ROAD SUITE 100 PLEASANTON, CA 94588	AFFORDABLE HOUSING	CALIFORNIA	501(C)(3)	LINE 10	HUMANGOOD AFFORDABLE HOUSING		X
HUMANGOOD ARIZONA INC. DBA TERRACES OF PHOENIX - 86-0176446, 6120 STONERIDGE MALL ROAD SUITE 100, PLEASANTON, CA 94588	LIFE PLAN COMMUNITY	ARIZONA	501(C)(3)	LINE 10	HUMANGOOD CORNERSTONE		X
SALISHAN SENIOR HOUSING, INC. - 90-0504991 6120 STONERIDGE MALL ROAD SUITE 100 PLEASANTON, CA 94588	AFFORDABLE HOUSING	WASHINGTON	501(C)(3)	LINE 10	HUMANGOOD AFFORDABLE HOUSING		X
HUMANGOOD WASHINGTON DBA JUDSON PARK RETIREMENT COMMUNITY - 91-1659735, 6120 STONERIDGE MALL ROAD SUITE 100, PLEASANTON,	LIFE PLAN COMMUNITY	WASHINGTON	501(C)(3)	LINE 10	HUMANGOOD CORNERSTONE		X
HUMANGOOD FOUNDATION SOUTH - 91-1931309 516 BURCHETT STREET GLENDALE, CA 91203	FUNDRAISING, FINANCIAL RESOURCES TO RELATED ENTITIES	CALIFORNIA	501(C)(3)	LINE 7	HUMANGOOD SOCIAL		X
SAN LEANDRO SENIOR HOUSING INC - 91-2158413 6120 STONERIDGE MALL ROAD SUITE 100 PLEASANTON, CA 94588	AFFORDABLE HOUSING	CALIFORNIA	501(C)(3)	LINE 10	HUMANGOOD AFFORDABLE HOUSING		X
HARBORVIEW PROPERTIES, INC. - 91-6086253 6120 STONERIDGE MALL ROAD SUITE 100 PLEASANTON, CA 94588	AFFORDABLE HOUSING	WASHINGTON	501(C)(3)	LINE 10	HUMANGOOD AFFORDABLE HOUSING		X
REDLANDS SENIOR HOUSING, INC. - 94-2902763 6120 STONERIDGE MALL ROAD SUITE 100 PLEASANTON, CA 94588	AFFORDABLE HOUSING	CALIFORNIA	501(C)(3)	LINE 10	HUMANGOOD AFFORDABLE HOUSING		X
HUMANGOOD AFFORDABLE HOUSING - 94-3085296 6120 STONERIDGE MALL ROAD SUITE 100 PLEASANTON, CA 94588	AFFORDABLE HOUSING	CALIFORNIA	501(C)(3)	LINE 10	HUMANGOOD CORNERSTONE		X
TAHOE SENIOR PLAZA INC - 94-3292737 6120 STONERIDGE MALL ROAD SUITE 100 PLEASANTON, CA 94588	AFFORDABLE HOUSING	CALIFORNIA	501(C)(3)	LINE 10	HUMANGOOD AFFORDABLE HOUSING		X



HUMANGOOD EAST FKA PHILA. PRESBYTERY  
HOMES AND SVC. FOR THE AGING

Schedule R (Form 990)

23-2828862

**Part II** Continuation of Identification of Related Tax-Exempt Organizations

(a) Name, address, and EIN of related organization	(b) Primary activity	(c) Legal domicile (state or foreign country)	(d) Exempt Code section	(e) Public charity status (if section 501(c)(3))	(f) Direct controlling entity	(g) Section 512(b)(13) controlled organization?	
						Yes	No
HUMANGOOD SOCAL - 95-1894293 516 BURCHETT STREET GLENDALE, CA 91203	LIFE PLAN COMMUNITY	CALIFORNIA	501(C)(3)	LINE 10	HUMANGOOD		X
OAK KNOLLS HAVEN CORPORATION - 95-3497055 6120 STONERIDGE MALL ROAD SUITE 100 PLEASANTON, CA 94588	AFFORDABLE HOUSING	CALIFORNIA	501(C)(3)	LINE 10	HUMANGOOD AFFORDABLE HOUSING		X
ROSE VIEW TERRACE, INC. - 26-4333422 516 BURCHETT STREET GLENDALE, CA 91203	AFFORDABLE HOUSING	CALIFORNIA	501(C)(3)	LINE 7	HUMANGOOD AFFORDABLE HOUSING		X
SENIOR AFFORDABLE HOUSING CORP #3 DBA: HADLEY VILLAS - 30-0032287, 78-875 AVENUE 47, LA QUINTA, CA 92253	AFFORDABLE HOUSING	CALIFORNIA	501(C)(3)	LINE 7	HUMANGOOD AFFORDABLE HOUSING		X
SENIOR AFFORDABLE HOUSING CORP #4 DBA: MOUTAIN VISTAS - 30-0032292, 675 PEPPERTREE LANE, REDDING, CA 96003	AFFORDABLE HOUSING	CALIFORNIA	501(C)(3)	LINE 7	HUMANGOOD AFFORDABLE HOUSING		X
ANDRES DUARTE TERRACE - 30-0155849 1730 HUNTINGTON DRIVE DUARTE, CA 91010	AFFORDABLE HOUSING	CALIFORNIA	501(C)(3)	LINE 7	HUMANGOOD AFFORDABLE HOUSING		X
LC HOTCHKISS TERRACE - 30-0155895 51 BARSTOW AVENUE CLOVIS, CA 93612	AFFORDABLE HOUSING	CALIFORNIA	501(C)(3)	LINE 7	HUMANGOOD AFFORDABLE HOUSING		X
SENIOR AFFORDABLE HOUSING CORP #6 WILLIAM C ARTHUR TERRACE - 30-0204104, 516 BURCHETT STREET, GLENDALE, CA 91203	AFFORDABLE HOUSING	CALIFORNIA	501(C)(3)	LINE 7	HUMANGOOD AFFORDABLE HOUSING		X
REDDING MOUNTAIN VISTAS II - 30-0239400 516 BURCHETT STREET GLENDALE, CA 91203	AFFORDABLE HOUSING	CALIFORNIA	501(C)(3)	LINE 7	HUMANGOOD AFFORDABLE HOUSING		X
SIERRA GATEWAY SENIOR RESIDENCE - 30-0239445 516 BURCHETT STREET GLENDALE, CA 91203	AFFORDABLE HOUSING	CALIFORNIA	501(C)(3)	LINE 7	HUMANGOOD AFFORDABLE HOUSING		X
BANDERA SENIOR HOUSING CORP DBA: GEORGE MCDONALD COURT - 31-1538768, 516 BURCHETT STREET, GLENDALE, CA 91203	AFFORDABLE HOUSING	CALIFORNIA	501(C)(3)	LINE 7	HUMANGOOD AFFORDABLE HOUSING		X
SENIOR AFFORDABLE HOUSING CORP #1 DBA: OTTO GRUBER HOUSING - 31-1538772, 516 BURCHETT STREET, GLENDALE, CA 91203	AFFORDABLE HOUSING	CALIFORNIA	501(C)(3)	LINE 7	HUMANGOOD AFFORDABLE HOUSING		X

HUMANGOOD EAST FKA PHILA. PRESBYTERY  
HOMES AND SVC. FOR THE AGING

Schedule R (Form 990)

23-2828862

**Part II** Continuation of Identification of Related Tax-Exempt Organizations

(a) Name, address, and EIN of related organization	(b) Primary activity	(c) Legal domicile (state or foreign country)	(d) Exempt Code section	(e) Public charity status (if section 501(c)(3))	(f) Direct controlling entity	(g) Section 512(b)(13) controlled organization?	
						Yes	No
BEACON SENIOR HOUSING CORP DBA ROSEWOOD COURT - 31-1654224, 516 BURCHETT STREET, GLENDALE, CA 91203	AFFORDABLE HOUSING	CALIFORNIA	501(C)(3)	LINE 7	HUMANGOOD AFFORDABLE HOUSING		X
SENIOR AFFORDABLE HOUSING CORP #2 DBA: CLARK TERRACE II - 31-1718833, 516 BURCHETT STREET, GLENDALE, CA 91203	AFFORDABLE HOUSING	CALIFORNIA	501(C)(3)	LINE 7	HUMANGOOD AFFORDABLE HOUSING		X
COMMUNITY CARE FOR ADULTS - 33-0110895 516 BURCHETT STREET GLENDALE, CA 91203	INACTIVE CORPORATION	CALIFORNIA	501(C)(3)	LINE 10	HUMANGOOD SOCIAL		X
CENTER FOR AGING RESOURCES - 33-0368618 516 BURCHETT STREET GLENDALE, CA 91203	INACTIVE CORPORATION	CALIFORNIA	501(C)(3)	LINE 7	HUMANGOOD SOCIAL		X
THE REDWOOD FOUNDATION FOR SENIOR SERVICES - 33-0368622, 516 BURCHETT STREET, GLENDALE, CA 91203	INACTIVE CORPORATION	CALIFORNIA	501(C)(3)	LINE 10	HUMANGOOD SOCIAL		X
LIL JACKSON SENIOR COMMUNITY - 41-2205339 516 BURCHETT STREET GLENDALE, CA 91203	AFFORDABLE HOUSING	CALIFORNIA	501(C)(3)	LINE 7	HUMANGOOD AFFORDABLE HOUSING		X
SIERRA GATEWAY SENIOR RESIDENCE II - 45-4945583, 516 BURCHETT STREET, GLENDALE, CA 91203	AFFORDABLE HOUSING	CALIFORNIA	501(C)(3)	LINE 7	HUMANGOOD AFFORDABLE HOUSING		X
HUMANGOOD NORCAL - 94-1225374 516 BURCHETT STREET GLENDALE, CA 91203	NON-PROFIT RETIREMENT COMMUNITIES	CALIFORNIA	501(C)(3)	LINE 10	HUMANGOOD		X
SYCAMORE TERRACE INC - 95-3248885 516 BURCHETT STREET GLENDALE, CA 91203	AFFORDABLE HOUSING	CALIFORNIA	501(C)(3)	LINE 7	HUMANGOOD AFFORDABLE HOUSING		X
CASA DE LA PALOMA - 95-3276173 516 BURCHETT STREET GLENDALE, CA 91203	AFFORDABLE HOUSING	CALIFORNIA	501(C)(3)	LINE 7	HUMANGOOD AFFORDABLE HOUSING		X
PARK PASEO - 95-3628584 123 S ISABEL STREET GLENDALE, CA 91205	AFFORDABLE HOUSING	CALIFORNIA	501(C)(3)	LINE 7	HUMANGOOD AFFORDABLE HOUSING		X
PALMER AVENUE RETIREMENT CORP - 95-3864197 516 BURCHETT STREET GLENDALE, CA 91203	AFFORDABLE HOUSING	CALIFORNIA	501(C)(3)	LINE 10	HUMANGOOD AFFORDABLE HOUSING		X

HUMANGOOD EAST FKA PHILA. PRESBYTERY  
 HOMES AND SVC. FOR THE AGING

Schedule R (Form 990)

23-2828862

**Part II** Continuation of Identification of Related Tax-Exempt Organizations

(a) Name, address, and EIN of related organization	(b) Primary activity	(c) Legal domicile (state or foreign country)	(d) Exempt Code section	(e) Public charity status (if section 501(c)(3))	(f) Direct controlling entity	(g) Section 512(b)(13) controlled organization?	
						Yes	No
CANTERBURY VILLAGE RETIREMENT CORP - 95-3864198, 23420 AVENIDA ROTELLA, SANTA CLARITA, CA 91355	AFFORDABLE HOUSING	CALIFORNIA	501(C)(3)	LINE 7	HUMANGOOD AFFORDABLE HOUSING		X
WESTMINSTER COURT - 95-3866226 6850 FLORENCE AVENUE BELL GARDENS, CA 90201	AFFORDABLE HOUSING	CALIFORNIA	501(C)(3)	LINE 7	HUMANGOOD AFFORDABLE HOUSING		X
SOROPTIMIST GARDENS HOUSING CORP DBA: THE GARDENS - 95-3927250, 333 MONTEREY ROAD, GLENDALE, CA 91206	AFFORDABLE HOUSING	CALIFORNIA	501(C)(3)	LINE 7	HUMANGOOD AFFORDABLE HOUSING		X
CASTLE ARGYLE - 95-4454256 1919 NO ARGYLE AVENUE LOS ANGELES, CA 90068	AFFORDABLE HOUSING	CALIFORNIA	501(C)(3)	LINE 7	HUMANGOOD AFFORDABLE HOUSING		X
MOUNTAIN PARK TERRACE INC DBA CLARK TERRACE - 95-4570416, 2660 CLARK AVENUE, NORCO, CA 92860	AFFORDABLE HOUSING	CALIFORNIA	501(C)(3)	LINE 7	HUMANGOOD AFFORDABLE HOUSING		X
VENICE SENIOR HOUSING CORP DBA ADDA & PAUL SAFRAN SR HOUSING - 95-4607627, 151 OCEAN FRONT WALK, VENICE, CA 90291	AFFORDABLE HOUSING	CALIFORNIA	501(C)(3)	LINE 7	HUMANGOOD AFFORDABLE HOUSING		X
PRESBYTERIAN HOMES AND SERVICES OF THE WEST - 95-6058276, 516 BURCHETT STREET, GLENDALE, CA 91203	INACTIVE CORPORATION	CALIFORNIA	501(C)(3)	LINE 10	HUMANGOOD SOCIAL		X

HUMANGOOD EAST FKA PHILA. PRESBYTERY

**Part III Identification of Related Organizations Taxable as a Partnership.** Complete if the organization answered "Yes" on Form 990, Part IV, line 34, because it had one or more related organizations treated as a partnership during the tax year.

(a) Name, address, and EIN of related organization	(b) Primary activity	(c) Legal domicile (state or foreign country)	(d) Direct controlling entity	(e) Predominant income (related, unrelated, excluded from tax under sections 512-514)	(f) Share of total income	(g) Share of end-of-year assets	(h) Disproportionate allocations?		(i) Code V-UBI amount in box 20 of Schedule K-1 (Form 1065)	(j) General or managing partner?		(k) Percentage ownership
							Yes	No		Yes	No	
BENSALEM SENIOR APARTMENTS, LP - 23-3015495, 2000 JOSHUA ROAD, LAFAYETTE HILL, PA 19444	LOW INCOME HOUSING FOR SENIOR CITIZENS AND HANDICAPPED	PA	N/A	N/A	N/A	N/A		X	N/A		X	N/A
RIVERSIDE SENIOR APARTMENTS, LP - 20-4952357, 2000 JOSHUA ROAD, LAFAYETTE HILL, PA 19444	LOW INCOME HOUSING FOR SENIOR CITIZENS AND HANDICAPPED	PA	N/A	N/A	N/A	N/A		X	N/A		X	N/A
WYNNEFIELD PLACE LP - 30-0781453, 2000 JOSHUA ROAD, LAFAYETTE HILL, PA 19444	LOW INCOME HOUSING FOR SENIOR CITIZENS AND HANDICAPPED	PA	N/A	N/A	N/A	N/A		X	N/A		X	N/A
WYNNEFIELD SENIOR HOUSING, LLC - 30-0781219, 2000 JOSHUA ROAD, LAFAYETTE HILL, PA 19444	LOW INCOME HOUSING FOR SENIOR CITIZENS AND HANDICAPPED	PA	N/A	N/A	N/A	N/A		X	N/A		X	N/A

**Part IV Identification of Related Organizations Taxable as a Corporation or Trust.** Complete if the organization answered "Yes" on Form 990, Part IV, line 34, because it had one or more related organizations treated as a corporation or trust during the tax year.

(a) Name, address, and EIN of related organization	(b) Primary activity	(c) Legal domicile (state or foreign country)	(d) Direct controlling entity	(e) Type of entity (C corp, S corp, or trust)	(f) Share of total income	(g) Share of end-of-year assets	(h) Percentage ownership	(i) Section 512(b)(13) controlled entity?	
								Yes	No
PRESBYHOUSING, INC. - 23-3015067 2000 JOSHUA ROAD LAFAYETTE HILL, PA 19444	INVESTMENT	PA	N/A	C CORP	N/A	N/A	N/A		X
PRESBY RIVERSIDE HOUSING, INC. - 20-4893872 2000 JOSHUA ROAD LAFAYETTE HILL, PA 19444	INVESTMENT	PA	N/A	C CORP	N/A	N/A	N/A		X
PRESBY HOMES DEVELOPMENT CORP. - 20-3999872 2000 JOSHUA ROAD LAFAYETTE HILL, PA 19444	INACTIVE	PA	N/A	C CORP	N/A	N/A	N/A		X
WYNNEFIELD HOUSING CORPORATION - 45-5084607 2000 JOSHUA ROAD LAFAYETTE HILL, PA 19444	INACTIVE	PA	N/A	C CORP	N/A	N/A	N/A		X
CANTRELL HOUSING, INC. - 81-4274774 2000 JOSHUA ROAD LAFAYETTE HILL, PA 19444	INVESTMENT	PA	N/A	C CORP	N/A	N/A	N/A		X

HUMANGOOD EAST FKA PHILA. PRESBYTERY  
 HOMES AND SVC. FOR THE AGING

Schedule R (Form 990)

23-2828862

**Part III** Continuation of Identification of Related Organizations Taxable as a Partnership

(a) Name, address, and EIN of related organization	(b) Primary activity	(c) Legal domicile (state or foreign country)	(d) Direct controlling entity	(e) Predominant income (related, unrelated, excluded from tax under sections 512-514)	(f) Share of total income	(g) Share of end-of-year assets	(h) Disproportion- ate allocations?		(i) Code V-UBI amount in box 20 of Schedule K-1 (Form 1065)	(j) General or managing partner?		(k) Percentage ownership
							Yes	No		Yes	No	
PRESBY'S INSPIRED LIFE APARTMENTS, LLC - 81-4750260, 2000 JOSHUA ROAD, LAFAYETTE HILL, PA 19444	LOW INCOME HOUSING FOR SENIOR CITIZENS AND HANDICAPPED	PA	N/A	N/A	N/A	N/A		X	N/A		X	N/A
CANTRELL PLACE, LP - 35-2576043, 2000 JOSHUA ROAD, LAFAYETTE HILL, PA 19444	LOW INCOME HOUSING FOR SENIOR CITIZENS AND HANDICAPPED	PA	N/A	N/A	N/A	N/A		X	N/A		X	N/A
WITHERSPOON SENIOR APARTMENTS, LP - 36-4850788, 2000 JOSHUA ROAD, LAFAYETTE HILL, PA 19444	LOW INCOME HOUSING FOR SENIOR CITIZENS AND HANDICAPPED	PA	N/A	N/A	N/A	N/A		X	N/A		X	N/A
MAKEMIE COURT LP - 85-3509692 2000 JOSHUA ROAD LAFAYETTE HILL, PA 19444	LOW INCOME HOUSING FOR SENIOR CITIZENS AND HANDICAPPED	PA	N/A	N/A	N/A	N/A		X	N/A		X	N/A

**HUMANGOOD EAST FKA PHILA. PRESBYTERY  
HOMES AND SVC. FOR THE AGING**

Schedule R (Form 990)

23-2828862

**Part IV** Continuation of Identification of Related Organizations Taxable as a Corporation or Trust

(a) Name, address, and EIN of related organization	(b) Primary activity	(c) Legal domicile (state or foreign country)	(d) Direct controlling entity	(e) Type of entity (C corp, S corp, or trust)	(f) Share of total income	(g) Share of end-of-year assets	(h) Percentage ownership	(i) Section 512(b)(13) controlled entity?	
								Yes	No
WITHERSPOON HOUSING, INC. - 81-4265378 2000 JOSHUA ROAD LAFAYETTE HILL, PA 19444	INVESTMENT	PA	N/A	C CORP	N/A	N/A	N/A		X
SENIORITY PROPERTIES DBA HUMANGOOD PROPERTIES - 37-1788767, 6120 STONERIDGE MALL ROAD SUITE 100, PLEASANTON, CA 94588	PROPERTY HOLDING COMPANY	CA	N/A	C CORP	N/A	N/A	N/A		X
HG MAKEMIE HOUSING INC - 85-3491368 2000 JOSHUA ROAD LAFAYETTE HILL, PA 19444	LOW INCOME HOUSING FOR SENIOR CITIZENS AND HANDICAPPED	PA	HUMANGOOD EAST FKA PHILADELPHIA	C CORP	0.	0.	100%	X	

**HUMANGOOD EAST FKA PHILA. PRESBYTERY  
HOMES AND SVC. FOR THE AGING**

**Part V Transactions With Related Organizations.** Complete if the organization answered "Yes" on Form 990, Part IV, line 34, 35b, or 36.

**Note:** Complete line 1 if any entity is listed in Parts II, III, or IV of this schedule.

**1** During the tax year, did the organization engage in any of the following transactions with one or more related organizations listed in Parts II-IV?

	Yes	No
<b>a</b> Receipt of (i) interest, (ii) annuities, (iii) royalties, or (iv) rent from a controlled entity .....		X
<b>b</b> Gift, grant, or capital contribution to related organization(s) .....		X
<b>c</b> Gift, grant, or capital contribution from related organization(s) .....		X
<b>d</b> Loans or loan guarantees to or for related organization(s) .....	X	
<b>e</b> Loans or loan guarantees by related organization(s) .....	X	
<b>f</b> Dividends from related organization(s) .....		X
<b>g</b> Sale of assets to related organization(s) .....		X
<b>h</b> Purchase of assets from related organization(s) .....		X
<b>i</b> Exchange of assets with related organization(s) .....		X
<b>j</b> Lease of facilities, equipment, or other assets to related organization(s) .....		X
<b>k</b> Lease of facilities, equipment, or other assets from related organization(s) .....		X
<b>l</b> Performance of services or membership or fundraising solicitations for related organization(s) .....		X
<b>m</b> Performance of services or membership or fundraising solicitations by related organization(s) .....		X
<b>n</b> Sharing of facilities, equipment, mailing lists, or other assets with related organization(s) .....		X
<b>o</b> Sharing of paid employees with related organization(s) .....		X
<b>p</b> Reimbursement paid to related organization(s) for expenses .....		X
<b>q</b> Reimbursement paid by related organization(s) for expenses .....		X
<b>r</b> Other transfer of cash or property to related organization(s) .....		X
<b>s</b> Other transfer of cash or property from related organization(s) .....		X

**2** If the answer to any of the above is "Yes," see the instructions for information on who must complete this line, including covered relationships and transaction thresholds.

(a) Name of related organization	(b) Transaction type (a-s)	(c) Amount involved	(d) Method of determining amount involved
(1) WYNNEFIELD PLACE LP	D	8,137,500.	COST
(2) WITHERSPOON PLACE LP	D	1,145,025.	COST
(3)			
(4)			
(5)			
(6)			

**HUMANGOOD EAST FKA PHILA. PRESBYTERY**  
**HOMES AND SVC. FOR THE AGING**

**Part VI Unrelated Organizations Taxable as a Partnership.** Complete if the organization answered "Yes" on Form 990, Part IV, line 37.

Provide the following information for each entity taxed as a partnership through which the organization conducted more than five percent of its activities (measured by total assets or gross revenue) that was not a related organization. See instructions regarding exclusion for certain investment partnerships.

(a) Name, address, and EIN of entity	(b) Primary activity	(c) Legal domicile (state or foreign country)	(d) Predominant income (related, unrelated, excluded from tax under sections 512-514)	(e) <small>Are all partners sec. 501(c)(3) orgs.?</small>		(f) Share of total income	(g) Share of end-of-year assets	(h) <small>Dispropor- tionate allocations?</small>		(i) Code V-UBI amount in box 20 of Schedule K-1 (Form 1065)	(j) <small>General or managing partner?</small>		(k) Percentage ownership
				Yes	No			Yes	No		Yes	No	



**Part VII** Supplemental Information

Provide additional information for responses to questions on Schedule R. See instructions.

**PART II, IDENTIFICATION OF RELATED TAX-EXEMPT ORGANIZATIONS:**

NAME OF RELATED ORGANIZATION:

HUMANGOOD PENNSYLVANIA FKA PHILADELPHIA PRESBYTERY HOMES,  
INC.

DIRECT CONTROLLING ENTITY: HUMANGOOD EAST FKA PHILADELPHIA PRESBYTERY  
HOMES AND SERVICES FOR THE AGING

NAME OF RELATED ORGANIZATION:

PHILADELPHIA PRESBYTERY APARTMENTS, INC.

DIRECT CONTROLLING ENTITY: HUMANGOOD EAST FKA PHILADELPHIA PRESBYTERY  
HOMES AND SERVICES FOR THE AGING

NAME OF RELATED ORGANIZATION:

PHILADELPHIA PRESBYTERY APARTMENTS OF MORRISVILLE, INC.

DIRECT CONTROLLING ENTITY: HUMANGOOD EAST FKA PHILADELPHIA PRESBYTERY  
HOMES AND SERVICES FOR THE AGING

NAME OF RELATED ORGANIZATION:

TIOGA PRESBYTERIAN APARTMENTS, INC.

DIRECT CONTROLLING ENTITY: HUMANGOOD EAST FKA PHILADELPHIA PRESBYTERY  
HOMES AND SERVICES FOR THE AGING

NAME OF RELATED ORGANIZATION:

SOUTHWEST PHILADELPHIA PRESBYTERY APARTMENTS, INC.

DIRECT CONTROLLING ENTITY: HUMANGOOD EAST FKA PHILADELPHIA PRESBYTERY  
HOMES AND SERVICES FOR THE AGING

**Part VII** Supplemental Information

Provide additional information for responses to questions on Schedule R. See instructions.

NAME OF RELATED ORGANIZATION:

OLD CITY PRESBYTERIAN APARTMENTS, INC.

DIRECT CONTROLLING ENTITY: HUMANGOOD EAST FKA PHILADELPHIA PRESBYTERY

HOMES AND SERVICES FOR THE AGING

NAME OF RELATED ORGANIZATION:

PRESBYTERIAN APARTMENTS AT 58TH STREET, INC.

DIRECT CONTROLLING ENTITY: HUMANGOOD EAST FKA PHILADELPHIA PRESBYTERY

HOMES AND SERVICES FOR THE AGING

NAME OF RELATED ORGANIZATION:

GERMANTOWN INTERFAITH HOUSING, INC.

DIRECT CONTROLLING ENTITY: HUMANGOOD EAST FKA PHILADELPHIA PRESBYTERY

HOMES AND SERVICES FOR THE AGING

NAME OF RELATED ORGANIZATION:

MAKEMIE AT WHITE LAND

DIRECT CONTROLLING ENTITY: HUMANGOOD EAST FKA PHILADELPHIA PRESBYTERY

HOMES AND SERVICES FOR THE AGING

NAME OF RELATED ORGANIZATION:

AVENUE OF THE ARTS PRESBYTERIAN - PSC APARTMENTS, INC.

DIRECT CONTROLLING ENTITY: HUMANGOOD EAST FKA PHILADELPHIA PRESBYTERY

HOMES AND SERVICES FOR THE AGING

NAME OF RELATED ORGANIZATION:

BALA PRESBYTERIAN HOME FOUNDATION

DIRECT CONTROLLING ENTITY: HUMANGOOD EAST FKA PHILADELPHIA PRESBYTERY

**Part VII** Supplemental Information

Provide additional information for responses to questions on Schedule R. See instructions.

HOMES AND SERVICES FOR THE AGING

NAME OF RELATED ORGANIZATION:

SOUTH PHILADELPHIA PRESBYTERIAN APARTMENTS, INC.

DIRECT CONTROLLING ENTITY: HUMANGOOD EAST FKA PHILADELPHIA PRESBYTERY

HOMES AND SERVICES FOR THE AGING

NAME OF RELATED ORGANIZATION:

GREENWAY PRESBYTERIAN APARTMENTS, INC.

DIRECT CONTROLLING ENTITY: HUMANGOOD EAST FKA PHILADELPHIA PRESBYTERY

HOMES AND SERVICES FOR THE AGING

NAME OF RELATED ORGANIZATION:

MANTUA PRESBYTERIAN APARTMENTS, INC.

DIRECT CONTROLLING ENTITY: HUMANGOOD EAST FKA PHILADELPHIA PRESBYTERY

HOMES AND SERVICES FOR THE AGING

NAME OF RELATED ORGANIZATION:

SOUTHWEST PHILADELPHIA NEIGHBORHOOD RENEWAL PROGRAM

DIRECT CONTROLLING ENTITY: HUMANGOOD EAST FKA PHILADELPHIA PRESBYTERY

HOMES AND SERVICES FOR THE AGING

NAME OF RELATED ORGANIZATION:

PRESBYSERVICES

DIRECT CONTROLLING ENTITY: HUMANGOOD EAST FKA PHILADELPHIA PRESBYTERY

HOMES AND SERVICES FOR THE AGING

NAME OF RELATED ORGANIZATION:

**Part VII** Supplemental Information

Provide additional information for responses to questions on Schedule R. See instructions.

GRACE COURT, INC.

DIRECT CONTROLLING ENTITY: HUMANGOOD EAST FKA PHILADELPHIA PRESBYTERY

HOMES AND SERVICES FOR THE AGING

NAME OF RELATED ORGANIZATION:

PHILADELPHIA PRESBYTERY HOMES WC TRUST

DIRECT CONTROLLING ENTITY: HUMANGOOD EAST FKA PHILADELPHIA PRESBYTERY

HOMES AND SERVICES FOR THE AGING

NAME OF RELATED ORGANIZATION:

THE PRESBYTERIAN HOME AT 58TH STREET

DIRECT CONTROLLING ENTITY: HUMANGOOD EAST FKA PHILADELPHIA PRESBYTERY

HOMES AND SERVICES FOR THE AGING

NAME OF RELATED ORGANIZATION:

PASCHALL SENIOR HOUSING, INC.

DIRECT CONTROLLING ENTITY: HUMANGOOD EAST FKA PHILADELPHIA PRESBYTERY

HOMES AND SERVICES FOR THE AGING

NAME, ADDRESS, AND EIN OF RELATED ORGANIZATION:

HUMANGOOD FRESNO DBA THE TERRACES AT SAN JOAQUIN GARDENS

EIN: 26-0650298

6120 STONERIDGE MALL ROAD SUITE 100

PLEASANTON, CA 94588

NAME, ADDRESS, AND EIN OF RELATED ORGANIZATION:

HUMANGOOD WASHINGTON DBA JUDSON PARK RETIREMENT COMMUNITY

EIN: 91-1659735

**Part VII** Supplemental Information

Provide additional information for responses to questions on Schedule R. See instructions.

6120 STONERIDGE MALL ROAD SUITE 100

PLEASANTON, CA 94588

PART IV, IDENTIFICATION OF RELATED ORGANIZATIONS TAXABLE AS CORP OR TRUST:

NAME OF RELATED ORGANIZATION:

HG MAKEMIE HOUSING INC

DIRECT CONTROLLING ENTITY: HUMANGOOD EAST FKA PHILADELPHIA PRESBYTERY

HOMES AND SERVICES FOR THE AGING