

**Top Notes for HumanGood Arizona, Inc. doing business as Terraces of Phoenix Form 990
Year Ended December 31, 2019
Filed on 2019 Tax Forms**

These top notes are to be read in conjunction with the Form 990 for HumanGood Arizona, Inc dba Terraces of Phoenix. Following these top notes is an organization chart for HumanGood that is highlighted to show HumanGood Arizona Inc.'s relationship to the affiliated group. HumanGood Cornerstone is the sole member of HumanGood Arizona, Inc.

The Form 990 must be submitted electronically and the software supporting form submittal provides a limited format in which to describe the entire organizational structure of HumanGood Arizona, Inc., its parent, HumanGood Cornerstone and other affiliated entities.

The following comments will hopefully assist readers in understanding the various forms that comprise the tax filing:

Form 990 Part IV

This part asks 38 questions which if answered "yes" often trigger a requirement to provide additional information through supplemental schedules.

Question 10 in this section asks about quasi-endowment funds. While HumanGood Arizona, Inc. does not hold quasi-endowment funds, an affiliate of HumanGood NorCal, HumanGood Foundation West does and that is disclosed in the Foundation West Form 990.

Question 12 asks if the legal entity HumanGood Arizona, Inc. obtained its own separate audit. HumanGood Arizona, Inc. is included in the audit of HumanGood National Obligated Group (along with HumanGood Washington dba Judson Park), so while it is audited, it is not audited on a stand-alone basis. HumanGood Arizona, Inc. is also included in the compilation of HumanGood.

Question 23 requires the preparation of a supplemental compensation Schedule J if there are any HumanGood Arizona, Inc. employees being paid over \$150,000. In addition, the supplemental scheduled is required if any officers of HumanGood Arizona, Inc. are employed by a related organization. As a result, HumanGood NorCal and HumanGood SoCal employees that serve in this capacity are disclosed, even though their compensation is paid by HumanGood NorCal and HumanGood SoCal, not HumanGood Arizona, Inc.

Question 34 requires the disclosure of affiliated entities on a supplemental Schedule R. The manner in which affiliates are required to be disclosed is awkward and we believe affiliates are better presented in an organizational chart format following these top notes.

Form 990 Part V

This part makes inquiries about other IRS filings and tax compliance. HumanGood Arizona, Inc. is in compliance with tax regulations.

Form 990 Part VI

This part makes inquiries about governance and other policies. Most of this information is provided on supplemental Schedule O. Section A question 1b asks for voting members of the government body who are independent. Based on our tax professionals' interpretation, only board members who did not

receive stipends during the year are listed here as independent. The only board members receiving stipends are the seven members serving at the highest level of the organization chart.

Form 990 Part VII

This part includes compensation disclosure information which is also included in more detail on Schedule J. This schedule is required to be prepared on a calendar year basis and is consistent with the period for the Form 990 for 2019.

Form 990 Parts VIII, IX and X

These parts of the Form 990 are the core financial statements in a slightly different format from the annual audit. To more directly associate this Form 990 with HumanGood National Obligated Group's audit for the year ended December 31, 2019, Part IX of the Form 990 should be compared with the column entitled "Terraces of Phoenix" on page 26 of the audited financial statements. Part X of the Form 990 should be compared with the column entitled "Terraces of Phoenix" on page 25 of the audited financial statements.

Schedule A

This schedule calculates a public support percentage to support HumanGood Arizona, Inc.'s public charity status. Since service revenue is the vast majority of HumanGood Arizona, Inc.'s revenue, this is not an issue.

Schedule B

Schedule of contributors is not required to be filed with the Form 990 publicly due to confidentiality issues. Contributions to support HumanGood Arizona, Inc. are primarily received through Foundation West. The only contributions reflected on this form are the distributions from the Foundation West benevolence funds to support HumanGood Arizona, Inc.

Schedule C

This schedule is included because our annual dues to Leading Age contain a small percentage of fees used for lobbying on behalf of our industry. Amounts for each reporting entity are shown in Part II- B line 1i and explained in Part IV as supplemental information.

Schedule D

This schedule provides additional disclosure for selected balance sheet accounts for the legal entity.

Schedule J

This schedule provides additional compensation information. This schedule is included in many of HumanGood Arizona, Inc. affiliates' returns as well. It is important to note that compensation paid by the organization is listed on line (i) for each individual or if it is paid by an affiliated organization, it is listed on line (ii).

Effective May 1, 2016, HumanGood SoCal became a related organization, and John Cochrane, Dan Ogus, and Dan Hutson became officers of the new combined organization. While management team members are paid by one legal entity, the related costs are allocated equitably among the affiliated entities. Compensation listed on schedule J is for calendar year 2019.

Schedule K

This schedule details compliance areas that are significant regarding maintaining the tax-exempt status of HumanGood Arizona, Inc.'s debt.

Schedule O

Contains supplemental disclosures required by other forms and Schedules. The order of the disclosures is determined by the tax return software used by HumanGood Arizona's tax advisor.

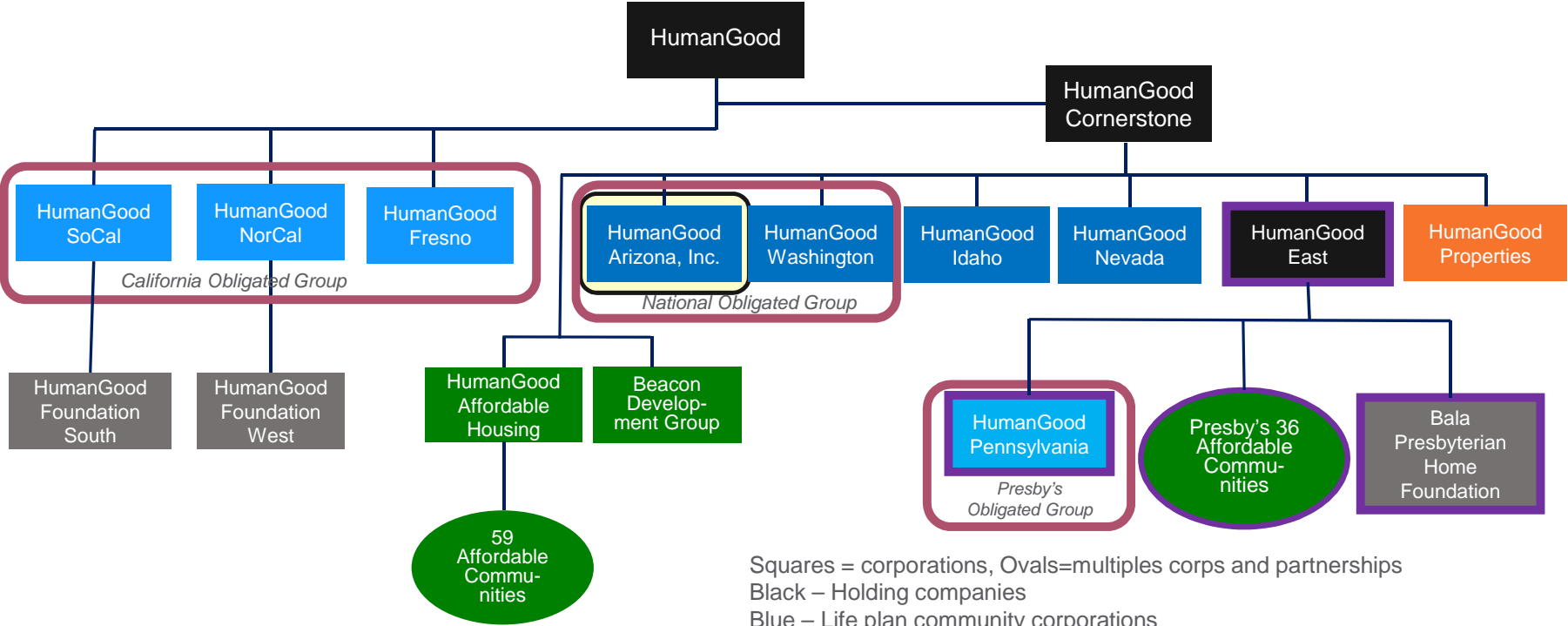
Schedule R

This schedule details related organizations in a different format than the attached organization chart. In addition, Part V of the form identifies transactions with related organizations.

Additional Disclosure

HumanGood National Obligated Group audited financial statements which include HumanGood Arizona, Inc. are available upon request from Andrew McDonald, CFO at (925) 924-7196.

human good



Squares = corporations, Ovals=multiples corps and partnerships
 Black – Holding companies
 Blue – Life plan community corporations
 Pink – Home care corporations
 Orange – Real estate holding company (for profit)
 Green – Affordable housing companies
 Purple outline – Presby companies

Form **990**
(Rev. January 2020)
Department of the Treasury
Internal Revenue Service

Return of Organization Exempt From Income Tax
Under section 501(c), 527, or 4947(a)(1) of the Internal Revenue Code (except private foundations)
▶ Do not enter social security numbers on this form as it may be made public.
▶ Go to www.irs.gov/Form990 for instructions and the latest information.

OMB No. 1545-0047

2019
Open to Public Inspection

A For the **2019** calendar year, or tax year beginning and ending

B Check if applicable: Address change Name change Initial return Final return/terminated Amended return Application pending	C Name of organization HUMANGOOD ARIZONA, INC.		D Employer identification number 86-0176446
	Doing business as THE TERRACES OF PHOENIX		E Telephone number 925-924-7100
	Number and street (or P.O. box if mail is not delivered to street address) C/O 6120 STONERIDGE MALL RD.	Room/suite 100	G Gross receipts \$ 25,703,415.
	City or town, state or province, country, and ZIP or foreign postal code PLEASANTON, CA 94588		H(a) Is this a group return for subordinates? <input type="checkbox"/> Yes <input checked="" type="checkbox"/> No H(b) Are all subordinates included? Yes No If "No," attach a list. (see instructions) H(c) Group exemption number ▶
F Name and address of principal officer: JOHN H. COCHRANE, III SAME AS C ABOVE			
I Tax-exempt status: <input checked="" type="checkbox"/> 501(c)(3) 501(c) () ◀ (insert no.) 4947(a)(1) or 527			
J Website: ▶ WWW.HUMANGOOD.ORG			
K Form of organization: <input checked="" type="checkbox"/> Corporation Trust Association Other ▶			L Year of formation: 1959 M State of legal domicile: AZ

Part I Summary		Prior Year	Current Year
Activities & Governance	1 Briefly describe the organization's mission or most significant activities: TO HELP OLDER ADULTS LIVE THEIR BEST LIVES POSSIBLE, HOWEVER THEY DEFINE IT.		
	2 Check this box <input type="checkbox"/> if the organization discontinued its operations or disposed of more than 25% of its net assets.		
	3 Number of voting members of the governing body (Part VI, line 1a)	3	9
	4 Number of independent voting members of the governing body (Part VI, line 1b)	4	5
	5 Total number of individuals employed in calendar year 2019 (Part V, line 2a)	5	358
	6 Total number of volunteers (estimate if necessary)	6	5
	7 a Total unrelated business revenue from Part VIII, column (C), line 12	7a	0.
b Net unrelated business taxable income from Form 990-T, line 39	7b	0.	
Revenue	8 Contributions and grants (Part VIII, line 1h)	40,932.	42,996.
	9 Program service revenue (Part VIII, line 2g)	23,014,724.	24,246,703.
	10 Investment income (Part VIII, column (A), lines 3, 4, and 7d)	299,711.	385,791.
	11 Other revenue (Part VIII, column (A), lines 5, 6d, 8c, 9c, 10c, and 11e)	272,612.	187,766.
	12 Total revenue - add lines 8 through 11 (must equal Part VIII, column (A), line 12)	23,627,979.	24,863,256.
Expenses	13 Grants and similar amounts paid (Part IX, column (A), lines 1-3)	0.	0.
	14 Benefits paid to or for members (Part IX, column (A), line 4)	0.	0.
	15 Salaries, other compensation, employee benefits (Part IX, column (A), lines 5-10)	10,757,285.	11,417,382.
	16a Professional fundraising fees (Part IX, column (A), line 11e)	0.	0.
	b Total fundraising expenses (Part IX, column (D), line 25) ▶ 0.		
	17 Other expenses (Part IX, column (A), lines 11a-11d, 11f-24e)	13,167,458.	13,707,104.
18 Total expenses. Add lines 13-17 (must equal Part IX, column (A), line 25)	23,924,743.	25,124,486.	
19 Revenue less expenses. Subtract line 18 from line 12	-296,764.	-261,230.	
Net Assets or Fund Balances	20 Total assets (Part X, line 16)	Beginning of Current Year 64,678,827.	End of Year 63,816,574.
	21 Total liabilities (Part X, line 26)	117,115,951.	116,377,519.
	22 Net assets or fund balances. Subtract line 21 from line 20	-52,437,124.	-52,560,945.

Part II Signature Block

Under penalties of perjury, I declare that I have examined this return, including accompanying schedules and statements, and to the best of my knowledge and belief, it is true, correct, and complete. Declaration of preparer (other than officer) is based on all information of which preparer has any knowledge.

Sign Here	Signature of officer	Date			
	ANDREW MCDONALD, CFO Type or print name and title				
Paid Preparer Use Only	Print/Type preparer's name KERRI N. BOGDA, CPA	Preparer's signature <i>Kerri Bogda</i>	Date 11/12/20	Check if self-employed <input type="checkbox"/>	PTIN P00760402
	Firm's name ▶ BAKER TILLY US, LLP	Firm's EIN ▶ 39-0859910		Phone no. 717.740.4863	
Firm's address ▶ 1570 FRUITVILLE PIKE, SUITE 400 LANCASTER, PA 17601					

May the IRS discuss this return with the preparer shown above? (see instructions) Yes No

Part III Statement of Program Service Accomplishments

Check if Schedule O contains a response or note to any line in this Part III

1 Briefly describe the organization's mission: THE MISSION OF THE ORGANIZATION IS TO HELP OLDER ADULTS LIVE THEIR BEST LIVES POSSIBLE, HOWEVER THEY DEFINE IT, AND TO DELIVER PRODUCTS AND SERVICES THAT OFFER OPPORTUNITIES TO PURSUE ENGAGED, PURPOSEFUL LIVES.

2 Did the organization undertake any significant program services during the year which were not listed on the prior Form 990 or 990-EZ? No

3 Did the organization cease conducting, or make significant changes in how it conducts, any program services? No

4 Describe the organization's program service accomplishments for each of its three largest program services, as measured by expenses. Section 501(c)(3) and 501(c)(4) organizations are required to report the amount of grants and allocations to others, the total expenses, and revenue, if any, for each program service reported.

4a (Code:) (Expenses \$ 22,407,744. including grants of \$ 0.) (Revenue \$ 24,246,703.) HUMANGOOD ARIZONA IS A LIFE PLAN COMMUNITY (FORMERLY CONTINUING CARE RETIREMENT COMMUNITY) THAT PROVIDES HOUSING AND HEALTH CARE FOR THE ELDERLY. DIRECT RESIDENT CARE FOR SENIORS INCLUDES INDEPENDENT LIVING, ASSISTED LIVING, MEMORY CARE, NURSING, AND HOME CARE. IT ALSO PROVIDES OUTREACH AND WELLNESS SERVICES INCLUDING MEALS PROGRAM, HOUSEKEEPING, MAINTENANCE AND ACTIVITIES.

4b (Code:) (Expenses \$ including grants of \$) (Revenue \$)

4c (Code:) (Expenses \$ including grants of \$) (Revenue \$)

4d Other program services (Describe on Schedule O.) (Expenses \$ including grants of \$) (Revenue \$)

4e Total program service expenses 22,407,744.

Part IV Checklist of Required Schedules

	Yes	No
1 Is the organization described in section 501(c)(3) or 4947(a)(1) (other than a private foundation)? <i>If "Yes," complete Schedule A</i>	X	
2 Is the organization required to complete <i>Schedule B, Schedule of Contributors</i> ?	X	
3 Did the organization engage in direct or indirect political campaign activities on behalf of or in opposition to candidates for public office? <i>If "Yes," complete Schedule C, Part I</i>		X
4 Section 501(c)(3) organizations. Did the organization engage in lobbying activities, or have a section 501(h) election in effect during the tax year? <i>If "Yes," complete Schedule C, Part II</i>	X	
5 Is the organization a section 501(c)(4), 501(c)(5), or 501(c)(6) organization that receives membership dues, assessments, or similar amounts as defined in Revenue Procedure 98-19? <i>If "Yes," complete Schedule C, Part III</i>		X
6 Did the organization maintain any donor advised funds or any similar funds or accounts for which donors have the right to provide advice on the distribution or investment of amounts in such funds or accounts? <i>If "Yes," complete Schedule D, Part I</i>		X
7 Did the organization receive or hold a conservation easement, including easements to preserve open space, the environment, historic land areas, or historic structures? <i>If "Yes," complete Schedule D, Part II</i>		X
8 Did the organization maintain collections of works of art, historical treasures, or other similar assets? <i>If "Yes," complete Schedule D, Part III</i>		X
9 Did the organization report an amount in Part X, line 21, for escrow or custodial account liability, serve as a custodian for amounts not listed in Part X; or provide credit counseling, debt management, credit repair, or debt negotiation services? <i>If "Yes," complete Schedule D, Part IV</i>		X
10 Did the organization, directly or through a related organization, hold assets in donor-restricted endowments or in quasi endowments? <i>If "Yes," complete Schedule D, Part V</i>		X
11 If the organization's answer to any of the following questions is "Yes," then complete Schedule D, Parts VI, VII, VIII, IX, or X as applicable.		
a Did the organization report an amount for land, buildings, and equipment in Part X, line 10? <i>If "Yes," complete Schedule D, Part VI</i>	X	
b Did the organization report an amount for investments - other securities in Part X, line 12, that is 5% or more of its total assets reported in Part X, line 16? <i>If "Yes," complete Schedule D, Part VII</i>		X
c Did the organization report an amount for investments - program related in Part X, line 13, that is 5% or more of its total assets reported in Part X, line 16? <i>If "Yes," complete Schedule D, Part VIII</i>		X
d Did the organization report an amount for other assets in Part X, line 15, that is 5% or more of its total assets reported in Part X, line 16? <i>If "Yes," complete Schedule D, Part IX</i>		X
e Did the organization report an amount for other liabilities in Part X, line 25? <i>If "Yes," complete Schedule D, Part X</i>	X	
f Did the organization's separate or consolidated financial statements for the tax year include a footnote that addresses the organization's liability for uncertain tax positions under FIN 48 (ASC 740)? <i>If "Yes," complete Schedule D, Part X</i>	X	
12a Did the organization obtain separate, independent audited financial statements for the tax year? <i>If "Yes," complete Schedule D, Parts XI and XII</i>		X
b Was the organization included in consolidated, independent audited financial statements for the tax year? <i>If "Yes," and if the organization answered "No" to line 12a, then completing Schedule D, Parts XI and XII is optional</i>	X	
13 Is the organization a school described in section 170(b)(1)(A)(ii)? <i>If "Yes," complete Schedule E</i>		X
14a Did the organization maintain an office, employees, or agents outside of the United States?		X
b Did the organization have aggregate revenues or expenses of more than \$10,000 from grantmaking, fundraising, business, investment, and program service activities outside the United States, or aggregate foreign investments valued at \$100,000 or more? <i>If "Yes," complete Schedule F, Parts I and IV</i>		X
15 Did the organization report on Part IX, column (A), line 3, more than \$5,000 of grants or other assistance to or for any foreign organization? <i>If "Yes," complete Schedule F, Parts II and IV</i>		X
16 Did the organization report on Part IX, column (A), line 3, more than \$5,000 of aggregate grants or other assistance to or for foreign individuals? <i>If "Yes," complete Schedule F, Parts III and IV</i>		X
17 Did the organization report a total of more than \$15,000 of expenses for professional fundraising services on Part IX, column (A), lines 6 and 11e? <i>If "Yes," complete Schedule G, Part I</i>		X
18 Did the organization report more than \$15,000 total of fundraising event gross income and contributions on Part VIII, lines 1c and 8a? <i>If "Yes," complete Schedule G, Part II</i>		X
19 Did the organization report more than \$15,000 of gross income from gaming activities on Part VIII, line 9a? <i>If "Yes," complete Schedule G, Part III</i>		X
20a Did the organization operate one or more hospital facilities? <i>If "Yes," complete Schedule H</i>		X
b If "Yes" to line 20a, did the organization attach a copy of its audited financial statements to this return?		
21 Did the organization report more than \$5,000 of grants or other assistance to any domestic organization or domestic government on Part IX, column (A), line 1? <i>If "Yes," complete Schedule I, Parts I and II</i>		X

Part IV Checklist of Required Schedules (continued)

	Yes	No
22 Did the organization report more than \$5,000 of grants or other assistance to or for domestic individuals on Part IX, column (A), line 2? <i>If "Yes," complete Schedule I, Parts I and III</i>		X
23 Did the organization answer "Yes" to Part VII, Section A, line 3, 4, or 5 about compensation of the organization's current and former officers, directors, trustees, key employees, and highest compensated employees? <i>If "Yes," complete Schedule J</i>	X	
24a Did the organization have a tax-exempt bond issue with an outstanding principal amount of more than \$100,000 as of the last day of the year, that was issued after December 31, 2002? <i>If "Yes," answer lines 24b through 24d and complete Schedule K. If "No," go to line 25a</i>	X	
b Did the organization invest any proceeds of tax-exempt bonds beyond a temporary period exception?		X
c Did the organization maintain an escrow account other than a refunding escrow at any time during the year to defease any tax-exempt bonds?		X
d Did the organization act as an "on behalf of" issuer for bonds outstanding at any time during the year?		X
25a Section 501(c)(3), 501(c)(4), and 501(c)(29) organizations. Did the organization engage in an excess benefit transaction with a disqualified person during the year? <i>If "Yes," complete Schedule L, Part I</i>		X
b Is the organization aware that it engaged in an excess benefit transaction with a disqualified person in a prior year, and that the transaction has not been reported on any of the organization's prior Forms 990 or 990-EZ? <i>If "Yes," complete Schedule L, Part I</i>		X
26 Did the organization report any amount on Part X, line 5 or 22, for receivables from or payables to any current or former officer, director, trustee, key employee, creator or founder, substantial contributor, or 35% controlled entity or family member of any of these persons? <i>If "Yes," complete Schedule L, Part II</i>		X
27 Did the organization provide a grant or other assistance to any current or former officer, director, trustee, key employee, creator or founder, substantial contributor or employee thereof, a grant selection committee member, or to a 35% controlled entity (including an employee thereof) or family member of any of these persons? <i>If "Yes," complete Schedule L, Part III</i>		X
28 Was the organization a party to a business transaction with one of the following parties (see Schedule L, Part IV instructions, for applicable filing thresholds, conditions, and exceptions):		
a A current or former officer, director, trustee, key employee, creator or founder, or substantial contributor? <i>If "Yes," complete Schedule L, Part IV</i>		X
b A family member of any individual described in line 28a? <i>If "Yes," complete Schedule L, Part IV</i>		X
c A 35% controlled entity of one or more individuals and/or organizations described in lines 28a or 28b? <i>If "Yes," complete Schedule L, Part IV</i>		X
29 Did the organization receive more than \$25,000 in non-cash contributions? <i>If "Yes," complete Schedule M</i>		X
30 Did the organization receive contributions of art, historical treasures, or other similar assets, or qualified conservation contributions? <i>If "Yes," complete Schedule M</i>		X
31 Did the organization liquidate, terminate, or dissolve and cease operations? <i>If "Yes," complete Schedule N, Part I</i>		X
32 Did the organization sell, exchange, dispose of, or transfer more than 25% of its net assets? <i>If "Yes," complete Schedule N, Part II</i>		X
33 Did the organization own 100% of an entity disregarded as separate from the organization under Regulations sections 301.7701-2 and 301.7701-3? <i>If "Yes," complete Schedule R, Part I</i>		X
34 Was the organization related to any tax-exempt or taxable entity? <i>If "Yes," complete Schedule R, Part II, III, or IV, and Part V, line 1</i>	X	
35a Did the organization have a controlled entity within the meaning of section 512(b)(13)?		X
b If "Yes" to line 35a, did the organization receive any payment from or engage in any transaction with a controlled entity within the meaning of section 512(b)(13)? <i>If "Yes," complete Schedule R, Part V, line 2</i>		
36 Section 501(c)(3) organizations. Did the organization make any transfers to an exempt non-charitable related organization? <i>If "Yes," complete Schedule R, Part V, line 2</i>		X
37 Did the organization conduct more than 5% of its activities through an entity that is not a related organization and that is treated as a partnership for federal income tax purposes? <i>If "Yes," complete Schedule R, Part VI</i>		X
38 Did the organization complete Schedule O and provide explanations in Schedule O for Part VI, lines 11b and 19?	X	

Note: All Form 990 filers are required to complete Schedule O

Part V Statements Regarding Other IRS Filings and Tax Compliance

Check if Schedule O contains a response or note to any line in this Part V

	Yes	No
1a Enter the number reported in Box 3 of Form 1096. Enter -0- if not applicable		
b Enter the number of Forms W-2G included in line 1a. Enter -0- if not applicable		
c Did the organization comply with backup withholding rules for reportable payments to vendors and reportable gaming (gambling) winnings to prize winners?		

Part V Statements Regarding Other IRS Filings and Tax Compliance (continued)

Table with columns for question number, question text, and Yes/No response boxes. Includes questions 2a through 16 regarding employee counts, tax returns, unrelated business income, foreign accounts, prohibited transactions, and charitable contributions.

Part VI Governance, Management, and Disclosure For each "Yes" response to lines 2 through 7b below, and for a "No" response to line 8a, 8b, or 10b below, describe the circumstances, processes, or changes on Schedule O. See instructions.

Check if Schedule O contains a response or note to any line in this Part VI [X]

Section A. Governing Body and Management

Table with 3 columns: Question, Yes, No. Rows include: 1a Enter the number of voting members of the governing body at the end of the tax year; 1b Enter the number of voting members included on line 1a, above, who are independent; 2 Did any officer, director, trustee, or key employee have a family relationship or a business relationship with any other officer, director, trustee, or key employee?; 3 Did the organization delegate control over management duties customarily performed by or under the direct supervision of officers, directors, trustees, or key employees to a management company or other person?; 4 Did the organization make any significant changes to its governing documents since the prior Form 990 was filed?; 5 Did the organization become aware during the year of a significant diversion of the organization's assets?; 6 Did the organization have members or stockholders?; 7a Did the organization have members, stockholders, or other persons who had the power to elect or appoint one or more members of the governing body?; 7b Are any governance decisions of the organization reserved to (or subject to approval by) members, stockholders, or persons other than the governing body?; 8 Did the organization contemporaneously document the meetings held or written actions undertaken during the year by the following: a The governing body? b Each committee with authority to act on behalf of the governing body?; 9 Is there any officer, director, trustee, or key employee listed in Part VII, Section A, who cannot be reached at the organization's mailing address? If "Yes," provide the names and addresses on Schedule O.

Section B. Policies (This Section B requests information about policies not required by the Internal Revenue Code.)

Table with 3 columns: Question, Yes, No. Rows include: 10a Did the organization have local chapters, branches, or affiliates?; 10b If "Yes," did the organization have written policies and procedures governing the activities of such chapters, affiliates, and branches to ensure their operations are consistent with the organization's exempt purposes?; 11a Has the organization provided a complete copy of this Form 990 to all members of its governing body before filing the form?; 11b Describe in Schedule O the process, if any, used by the organization to review this Form 990.; 12a Did the organization have a written conflict of interest policy? If "No," go to line 13; 12b Were officers, directors, or trustees, and key employees required to disclose annually interests that could give rise to conflicts?; 12c Did the organization regularly and consistently monitor and enforce compliance with the policy? If "Yes," describe in Schedule O how this was done; 13 Did the organization have a written whistleblower policy?; 14 Did the organization have a written document retention and destruction policy?; 15 Did the process for determining compensation of the following persons include a review and approval by independent persons, comparability data, and contemporaneous substantiation of the deliberation and decision?; 15a The organization's CEO, Executive Director, or top management official; 15b Other officers or key employees of the organization; 16a Did the organization invest in, contribute assets to, or participate in a joint venture or similar arrangement with a taxable entity during the year?; 16b If "Yes," did the organization follow a written policy or procedure requiring the organization to evaluate its participation in joint venture arrangements under applicable federal tax law, and take steps to safeguard the organization's exempt status with respect to such arrangements?

Section C. Disclosure

- 17 List the states with which a copy of this Form 990 is required to be filed AZ
18 Section 6104 requires an organization to make its Forms 1023 (1024 or 1024-A, if applicable), 990, and 990-T (Section 501(c)(3)s only) available for public inspection. Indicate how you made these available. Check all that apply.
[X] Own website [X] Another's website [X] Upon request [] Other (explain on Schedule O)
19 Describe on Schedule O whether (and if so, how) the organization made its governing documents, conflict of interest policy, and financial statements available to the public during the tax year.
20 State the name, address, and telephone number of the person who possesses the organization's books and records
ANDREW MCDONALD, CFO - 925-924-7196
C/O 6120 STONERIDGE MALL RD., NO. 100, PLEASANTON, CA 94588

Part VII Compensation of Officers, Directors, Trustees, Key Employees, Highest Compensated Employees, and Independent Contractors

Check if Schedule O contains a response or note to any line in this Part VII

Section A. Officers, Directors, Trustees, Key Employees, and Highest Compensated Employees

1a Complete this table for all persons required to be listed. Report compensation for the calendar year ending with or within the organization's tax year.

- List all of the organization's **current** officers, directors, trustees (whether individuals or organizations), regardless of amount of compensation. Enter -0- in columns (D), (E), and (F) if no compensation was paid.
- List all of the organization's **current** key employees, if any. See instructions for definition of "key employee."
- List the organization's five **current** highest compensated employees (other than an officer, director, trustee, or key employee) who received reportable compensation (Box 5 of Form W-2 and/or Box 7 of Form 1099-MISC) of more than \$100,000 from the organization and any related organizations.
- List all of the organization's **former** officers, key employees, and highest compensated employees who received more than \$100,000 of reportable compensation from the organization and any related organizations.
- List all of the organization's **former directors or trustees** that received, in the capacity as a former director or trustee of the organization, more than \$10,000 of reportable compensation from the organization and any related organizations. See instructions for the order in which to list the persons above.

Check this box if neither the organization nor any related organization compensated any current officer, director, or trustee.

(A) Name and title	(B) Average hours per week (list any hours for related organizations below line)	(C) Position (do not check more than one box, unless person is both an officer and a director/trustee)						(D) Reportable compensation from the organization (W-2/1099-MISC)	(E) Reportable compensation from related organizations (W-2/1099-MISC)	(F) Estimated amount of other compensation from the organization and related organizations
		Individual trustee or director	Institutional trustee	Officer	Key employee	Highest compensated employee	Former			
(1) RANDALL L. STAMPER CHAIR	0.50 15.00	X		X				0.	73,250.	0.
(2) ALBERT W. KELLEY VICE CHAIR	0.50 7.40	X		X				0.	60,417.	0.
(3) H. DECLAN BROWN SECRETARY	0.50 8.75	X		X				0.	62,417.	0.
(4) JUDITH BAKER DIRECTOR	0.50 7.40	X						0.	60,917.	0.
(5) BRET TINKER DIRECTOR	0.50 2.00	X						0.	0.	0.
(6) DAVID DAHAN DIRECTOR	0.50 2.00	X						0.	0.	0.
(7) DAVID DECKER DIRECTOR	0.50 2.00	X						0.	0.	0.
(8) RAND FERRIS DIRECTOR	0.50 2.00	X						0.	0.	0.
(9) JANE REED DIRECTOR	0.50 1.50	X						0.	0.	0.
(10) JOHN H. COCHRANE, III PRESIDENT/CHIEF EXECUTIVE OFFICER	2.00 38.00			X				0.	869,457.	28,899.
(11) DANIEL HUTSON CHIEF STRATEGY OFFICER (UNTIL 3/19)	2.00 38.00			X				0.	537,378.	14,751.
(12) DANIEL OGUS CHIEF OPERATING OFFICER	2.00 38.00			X				0.	639,460.	32,388.
(13) PAMELA S. CLAASSEN CFO TO 12/19; CH CAP STRATEG 1/20	2.00 38.00			X				0.	644,386.	28,749.
(14) S. LOUISE RANKIN GENERAL COUNSEL (RETD. 05/19)	2.00 38.00			X				0.	374,996.	22,544.
(15) BETHANY GHASSEMI ASSOC GC TO 5/19; GEN COUNSEL 6/19	2.00 38.00			X				0.	185,891.	7,732.
(16) FLEMING MENG CHIEF INFORMATION OFFICER	2.00 38.00			X				0.	368,966.	25,885.
(17) TARA MCGUINNESS VP REGIONAL OPERATIONS	2.00 38.00				X			0.	279,155.	29,830.

Part VII Section A. Officers, Directors, Trustees, Key Employees, and Highest Compensated Employees (continued)

(A) Name and title	(B) Average hours per week (list any hours for related organizations below line)	(C) Position (do not check more than one box, unless person is both an officer and a director/trustee)						(D) Reportable compensation from the organization (W-2/1099-MISC)	(E) Reportable compensation from related organizations (W-2/1099-MISC)	(F) Estimated amount of other compensation from the organization and related organizations
		Individual trustee or director	Institutional trustee	Officer	Key employee	Highest compensated employee	Former			
(18) DENNIS GRADILLAS VP SALES	3.00 37.00				X			0.	293,107.	31,513.
(19) GREGORY BEARCE VP REGIONAL OPERATIONS	2.00 38.00				X			0.	259,990.	25,896.
(20) TYLER ICHIEN VP REGIONAL OPERATIONS	2.00 38.00				X			0.	276,812.	28,912.
(21) LISA HOLLAND VP REGIONAL OPERATIONS	2.00 38.00				X			0.	212,756.	24,397.
(22) MARC HERRERA VP HEALTHCARE & QUALITY	2.00 38.00				X			0.	257,255.	27,032.
(23) JAIME ROBERTS EXECUTIVE DIRECTOR	40.00					X		145,127.	0.	7,663.
(24) PIUS AOGA CHARGE NURSE LVN	40.00					X		111,673.	0.	19,456.
(25) MARGARET POPE DIRECTOR SALES	40.00					X		101,291.	0.	9,536.
1b Subtotal								358,091.	5,456,610.	365,183.
c Total from continuation sheets to Part VII, Section A								0.	0.	0.
d Total (add lines 1b and 1c)								358,091.	5,456,610.	365,183.

2 Total number of individuals (including but not limited to those listed above) who received more than \$100,000 of reportable compensation from the organization **3**

	Yes	No
3 Did the organization list any former officer, director, trustee, key employee, or highest compensated employee on line 1a? <i>If "Yes," complete Schedule J for such individual</i>		X
4 For any individual listed on line 1a, is the sum of reportable compensation and other compensation from the organization and related organizations greater than \$150,000? <i>If "Yes," complete Schedule J for such individual</i>	X	
5 Did any person listed on line 1a receive or accrue compensation from any unrelated organization or individual for services rendered to the organization? <i>If "Yes," complete Schedule J for such person</i>		X

Section B. Independent Contractors

1 Complete this table for your five highest compensated independent contractors that received more than \$100,000 of compensation from the organization. Report compensation for the calendar year ending with or within the organization's tax year.

(A) Name and business address	(B) Description of services	(C) Compensation
MORRISON MANAGEMENT SPECIALISTS PO BOX 102289, ATLANTA, GA 30368-2289	DINING SERVICES	2,317,584.
HUMANGOOD NORCAL, 6120 STONERIDGE MALL RD., STE. 100, PLEASANTON, CA 94588	MANAGEMENT SERVICES	1,880,964.
CONSONUS HEALTHCARE PO BOX 511204, LOS ANGELES, CA 90051-2997	THERAPY SERVICES	991,585.
MAYFAIR FLOORS INC., 3120 W. CAREFREE HIGHWAY, STE. B-5, PHOENIX, AZ 85086	CONTRACTOR	417,900.
DNR EXPERTISE LLC 4125 N. 48TH DR., PHOENIX, AZ 85031	CONTRACTOR	354,286.

2 Total number of independent contractors (including but not limited to those listed above) who received more than \$100,000 of compensation from the organization **6**

Part VIII Statement of Revenue

Check if Schedule O contains a response or note to any line in this Part VIII

				(A)	(B)	(C)	(D)	
				Total revenue	Related or exempt function revenue	Unrelated business revenue	Revenue excluded from tax under sections 512 - 514	
Contributions, Gifts, Grants and Other Similar Amounts	1 a	Federated campaigns	1a					
	b	Membership dues	1b					
	c	Fundraising events	1c					
	d	Related organizations	1d	42,996.				
	e	Government grants (contributions)	1e					
	f	All other contributions, gifts, grants, and similar amounts not included above ...	1f					
	g	Noncash contributions included in lines 1a-1f	1g	\$				
	h	Total. Add lines 1a-1f			42,996.			
Program Service Revenue	2 a	RESIDENT SERVICE FEE REVENUE	Business Code	623990	22,890,008.	22,890,008.		
	b	AMORTIZATION OF ENTRANCE FEES	Business Code	623990	1,356,695.	1,356,695.		
	c							
	d							
	e							
	f	All other program service revenue						
	g	Total. Add lines 2a-2f			24,246,703.			
Other Revenue	3	Investment income (including dividends, interest, and other similar amounts)			379,050.		379,050.	
	4	Income from investment of tax-exempt bond proceeds						
	5	Royalties						
	6 a	Gross rents	6a	(i) Real				
				(ii) Personal				
	b	Less: rental expenses ...	6b					
	c	Rental income or (loss)	6c					
	d	Net rental income or (loss)						
	7 a	Gross amount from sales of assets other than inventory	7a	(i) Securities	846,900.			
				(ii) Other				
	b	Less: cost or other basis and sales expenses	7b	840,159.				
	c	Gain or (loss)	7c	6,741.				
d	Net gain or (loss)			6,741.		6,741.		
8 a	Gross income from fundraising events (not including \$ _____ of contributions reported on line 1c). See Part IV, line 18	8a						
b	Less: direct expenses	8b						
c	Net income or (loss) from fundraising events							
9 a	Gross income from gaming activities. See Part IV, line 19	9a						
b	Less: direct expenses	9b						
c	Net income or (loss) from gaming activities							
10 a	Gross sales of inventory, less returns and allowances	10a						
b	Less: cost of goods sold	10b						
c	Net income or (loss) from sales of inventory							
Miscellaneous Revenue	11 a	BEAUTY & BARBER	Business Code	900099	134,206.		134,206.	
	b	GUEST/EMPLOYEE MEALS	Business Code	900099	39,935.		39,935.	
	c	HOUSEKEEPING	Business Code	900099	11,051.		11,051.	
	d	All other revenue	Business Code	900099	2,574.		2,574.	
	e	Total. Add lines 11a-11d			187,766.			
12	Total revenue. See instructions			24,863,256.	24,246,703.	0.	573,557.	

Part IX Statement of Functional Expenses

Section 501(c)(3) and 501(c)(4) organizations must complete all columns. All other organizations must complete column (A).

Check if Schedule O contains a response or note to any line in this Part IX

Do not include amounts reported on lines 6b, 7b, 8b, 9b, and 10b of Part VIII.	(A) Total expenses	(B) Program service expenses	(C) Management and general expenses	(D) Fundraising expenses
1 Grants and other assistance to domestic organizations and domestic governments. See Part IV, line 21 ...				
2 Grants and other assistance to domestic individuals. See Part IV, line 22				
3 Grants and other assistance to foreign organizations, foreign governments, and foreign individuals. See Part IV, lines 15 and 16				
4 Benefits paid to or for members				
5 Compensation of current officers, directors, trustees, and key employees				
6 Compensation not included above to disqualified persons (as defined under section 4958(f)(1)) and persons described in section 4958(c)(3)(B)				
7 Other salaries and wages	9,366,076.	8,976,630.	389,446.	
8 Pension plan accruals and contributions (include section 401(k) and 403(b) employer contributions)				
9 Other employee benefits	1,289,537.	1,235,917.	53,620.	
10 Payroll taxes	761,769.	730,094.	31,675.	
11 Fees for services (nonemployees):				
a Management	1,880,964.		1,880,964.	
b Legal				
c Accounting	50,236.		50,236.	
d Lobbying	1,038.		1,038.	
e Professional fundraising services. See Part IV, line 17				
f Investment management fees	44,837.		44,837.	
g Other. (If line 11g amount exceeds 10% of line 25, column (A) amount, list line 11g expenses on Sch O.)	1,036,245.	971,119.	65,126.	
12 Advertising and promotion	373,568.	373,568.		
13 Office expenses	144,888.	125,188.	19,700.	
14 Information technology				
15 Royalties				
16 Occupancy	2,833,782.	2,833,782.		
17 Travel	108,469.	89,849.	18,620.	
18 Payments of travel or entertainment expenses for any federal, state, or local public officials ...				
19 Conferences, conventions, and meetings	6,740.	5,138.	1,602.	
20 Interest				
21 Payments to affiliates				
22 Depreciation, depletion, and amortization	2,631,471.	2,631,471.		
23 Insurance	301,799.	301,799.		
24 Other expenses. Itemize expenses not covered above (List miscellaneous expenses on line 24e. If line 24e amount exceeds 10% of line 25, column (A) amount, list line 24e expenses on Schedule O.)				
a SUPPLIES	2,171,272.	2,170,338.	934.	
b ANCILLARY SERVICES	1,455,982.	1,455,982.		
c REPAIRS & MAINTENANCE	197,468.	197,468.		
d BAD DEBT EXPENSE	112,354.		112,354.	
e All other expenses	355,991.	309,401.	46,590.	
25 Total functional expenses. Add lines 1 through 24e	25,124,486.	22,407,744.	2,716,742.	0.
26 Joint costs. Complete this line only if the organization reported in column (B) joint costs from a combined educational campaign and fundraising solicitation.				
Check here <input type="checkbox"/> if following SOP 98-2 (ASC 958-720)				

Part X Balance Sheet

Check if Schedule O contains a response or note to any line in this Part X

		(A) Beginning of year		(B) End of year
Assets	1 Cash - non-interest-bearing	5,270,101.	1	4,589,215.
	2 Savings and temporary cash investments		2	
	3 Pledges and grants receivable, net		3	
	4 Accounts receivable, net	886,185.	4	1,236,483.
	5 Loans and other receivables from any current or former officer, director, trustee, key employee, creator or founder, substantial contributor, or 35% controlled entity or family member of any of these persons		5	
	6 Loans and other receivables from other disqualified persons (as defined under section 4958(f)(1)), and persons described in section 4958(c)(3)(B)		6	
	7 Notes and loans receivable, net		7	
	8 Inventories for sale or use	40,442.	8	40,442.
	9 Prepaid expenses and deferred charges	175,328.	9	175,344.
	10a Land, buildings, and equipment: cost or other basis. Complete Part VI of Schedule D	10a 78,470,306.		
	b Less: accumulated depreciation	10b 35,330,223.	10c	43,140,083.
	11 Investments - publicly traded securities	13,946,056.	11	14,586,142.
	12 Investments - other securities. See Part IV, line 11		12	
	13 Investments - program-related. See Part IV, line 11		13	
	14 Intangible assets		14	
	15 Other assets. See Part IV, line 11	0.	15	48,865.
16 Total assets. Add lines 1 through 15 (must equal line 33)	64,678,827.	16	63,816,574.	
Liabilities	17 Accounts payable and accrued expenses	1,913,389.	17	1,877,818.
	18 Grants payable		18	
	19 Deferred revenue		19	
	20 Tax-exempt bond liabilities	34,811,760.	20	34,226,432.
	21 Escrow or custodial account liability. Complete Part IV of Schedule D		21	
	22 Loans and other payables to any current or former officer, director, trustee, key employee, creator or founder, substantial contributor, or 35% controlled entity or family member of any of these persons		22	
	23 Secured mortgages and notes payable to unrelated third parties	11,700,450.	23	11,467,800.
	24 Unsecured notes and loans payable to unrelated third parties		24	
	25 Other liabilities (including federal income tax, payables to related third parties, and other liabilities not included on lines 17-24). Complete Part X of Schedule D	68,690,352.	25	68,805,469.
	26 Total liabilities. Add lines 17 through 25	117,115,951.	26	116,377,519.
Net Assets or Fund Balances	Organizations that follow FASB ASC 958, check here <input checked="" type="checkbox"/> and complete lines 27, 28, 32, and 33.			
	27 Net assets without donor restrictions	-52,437,124.	27	-52,560,945.
	28 Net assets with donor restrictions		28	
	Organizations that do not follow FASB ASC 958, check here <input type="checkbox"/> and complete lines 29 through 33.			
	29 Capital stock or trust principal, or current funds		29	
	30 Paid-in or capital surplus, or land, building, or equipment fund		30	
	31 Retained earnings, endowment, accumulated income, or other funds		31	
	32 Total net assets or fund balances	-52,437,124.	32	-52,560,945.
	33 Total liabilities and net assets/fund balances	64,678,827.	33	63,816,574.

Part XI Reconciliation of Net Assets

Check if Schedule O contains a response or note to any line in this Part XI

1	Total revenue (must equal Part VIII, column (A), line 12)	1	24,863,256.
2	Total expenses (must equal Part IX, column (A), line 25)	2	25,124,486.
3	Revenue less expenses. Subtract line 2 from line 1	3	-261,230.
4	Net assets or fund balances at beginning of year (must equal Part X, line 32, column (A))	4	-52,437,124.
5	Net unrealized gains (losses) on investments	5	293,681.
6	Donated services and use of facilities	6	
7	Investment expenses	7	
8	Prior period adjustments	8	
9	Other changes in net assets or fund balances (explain on Schedule O)	9	-156,272.
10	Net assets or fund balances at end of year. Combine lines 3 through 9 (must equal Part X, line 32, column (B))	10	-52,560,945.

Part XII Financial Statements and Reporting

Check if Schedule O contains a response or note to any line in this Part XII

- 1 Accounting method used to prepare the Form 990: Cash Accrual Other _____
If the organization changed its method of accounting from a prior year or checked "Other," explain in Schedule O.
- 2a Were the organization's financial statements compiled or reviewed by an independent accountant? _____
If "Yes," check a box below to indicate whether the financial statements for the year were compiled or reviewed on a separate basis, consolidated basis, or both:
 Separate basis Consolidated basis Both consolidated and separate basis
- b Were the organization's financial statements audited by an independent accountant? _____
If "Yes," check a box below to indicate whether the financial statements for the year were audited on a separate basis, consolidated basis, or both:
 Separate basis Consolidated basis Both consolidated and separate basis
- c If "Yes" to line 2a or 2b, does the organization have a committee that assumes responsibility for oversight of the audit, review, or compilation of its financial statements and selection of an independent accountant? _____
If the organization changed either its oversight process or selection process during the tax year, explain on Schedule O.
- 3a As a result of a federal award, was the organization required to undergo an audit or audits as set forth in the Single Audit Act and OMB Circular A-133? _____
- b If "Yes," did the organization undergo the required audit or audits? If the organization did not undergo the required audit or audits, explain why on Schedule O and describe any steps taken to undergo such audits _____

	Yes	No
2a	X	
2b	X	
2c	X	
3a		X
3b		

SCHEDULE A
(Form 990 or 990-EZ)

Department of the Treasury
Internal Revenue Service

Public Charity Status and Public Support

Complete if the organization is a section 501(c)(3) organization or a section 4947(a)(1) nonexempt charitable trust.

▶ Attach to Form 990 or Form 990-EZ.

▶ Go to www.irs.gov/Form990 for instructions and the latest information.

OMB No. 1545-0047

2019

Open to Public Inspection

Name of the organization HUMANGOOD ARIZONA, INC.	Employer identification number 86-0176446
--	---

Part I Reason for Public Charity Status (All organizations must complete this part.) See instructions.

The organization is not a private foundation because it is: (For lines 1 through 12, check only one box.)

- 1 A church, convention of churches, or association of churches described in **section 170(b)(1)(A)(i).**
- 2 A school described in **section 170(b)(1)(A)(ii).** (Attach Schedule E (Form 990 or 990-EZ).)
- 3 A hospital or a cooperative hospital service organization described in **section 170(b)(1)(A)(iii).**
- 4 A medical research organization operated in conjunction with a hospital described in **section 170(b)(1)(A)(iii).** Enter the hospital's name, city, and state: _____
- 5 An organization operated for the benefit of a college or university owned or operated by a governmental unit described in **section 170(b)(1)(A)(iv).** (Complete Part II.)
- 6 A federal, state, or local government or governmental unit described in **section 170(b)(1)(A)(v).**
- 7 An organization that normally receives a substantial part of its support from a governmental unit or from the general public described in **section 170(b)(1)(A)(vi).** (Complete Part II.)
- 8 A community trust described in **section 170(b)(1)(A)(vi).** (Complete Part II.)
- 9 An agricultural research organization described in **section 170(b)(1)(A)(ix)** operated in conjunction with a land-grant college or university or a non-land-grant college of agriculture (see instructions). Enter the name, city, and state of the college or university: _____
- 10 An organization that normally receives: (1) more than 33 1/3% of its support from contributions, membership fees, and gross receipts from activities related to its exempt functions - subject to certain exceptions, and (2) no more than 33 1/3% of its support from gross investment income and unrelated business taxable income (less section 511 tax) from businesses acquired by the organization after June 30, 1975. See **section 509(a)(2).** (Complete Part III.)
- 11 An organization organized and operated exclusively to test for public safety. See **section 509(a)(4).**
- 12 An organization organized and operated exclusively for the benefit of, to perform the functions of, or to carry out the purposes of one or more publicly supported organizations described in **section 509(a)(1)** or **section 509(a)(2).** See **section 509(a)(3).** Check the box in lines 12a through 12d that describes the type of supporting organization and complete lines 12e, 12f, and 12g.
 - a **Type I.** A supporting organization operated, supervised, or controlled by its supported organization(s), typically by giving the supported organization(s) the power to regularly appoint or elect a majority of the directors or trustees of the supporting organization. **You must complete Part IV, Sections A and B.**
 - b **Type II.** A supporting organization supervised or controlled in connection with its supported organization(s), by having control or management of the supporting organization vested in the same persons that control or manage the supported organization(s). **You must complete Part IV, Sections A and C.**
 - c **Type III functionally integrated.** A supporting organization operated in connection with, and functionally integrated with, its supported organization(s) (see instructions). **You must complete Part IV, Sections A, D, and E.**
 - d **Type III non-functionally integrated.** A supporting organization operated in connection with its supported organization(s) that is not functionally integrated. The organization generally must satisfy a distribution requirement and an attentiveness requirement (see instructions). **You must complete Part IV, Sections A and D, and Part V.**
 - e Check this box if the organization received a written determination from the IRS that it is a Type I, Type II, Type III functionally integrated, or Type III non-functionally integrated supporting organization.
 - f Enter the number of supported organizations
- g Provide the following information about the supported organization(s).

(i) Name of supported organization	(ii) EIN	(iii) Type of organization (described on lines 1-10 above (see instructions))	(iv) Is the organization listed in your governing document?		(v) Amount of monetary support (see instructions)	(vi) Amount of other support (see instructions)
			Yes	No		
Total						

Part II Support Schedule for Organizations Described in Sections 170(b)(1)(A)(iv) and 170(b)(1)(A)(vi)

(Complete only if you checked the box on line 5, 7, or 8 of Part I or if the organization failed to qualify under Part III. If the organization fails to qualify under the tests listed below, please complete Part III.)

Section A. Public Support

Calendar year (or fiscal year beginning in) ►	(a) 2015	(b) 2016	(c) 2017	(d) 2018	(e) 2019	(f) Total
1 Gifts, grants, contributions, and membership fees received. (Do not include any "unusual grants.")						
2 Tax revenues levied for the organization's benefit and either paid to or expended on its behalf						
3 The value of services or facilities furnished by a governmental unit to the organization without charge ...						
4 Total. Add lines 1 through 3						
5 The portion of total contributions by each person (other than a governmental unit or publicly supported organization) included on line 1 that exceeds 2% of the amount shown on line 11, column (f)						
6 Public support. Subtract line 5 from line 4.						

Section B. Total Support

Calendar year (or fiscal year beginning in) ►	(a) 2015	(b) 2016	(c) 2017	(d) 2018	(e) 2019	(f) Total
7 Amounts from line 4						
8 Gross income from interest, dividends, payments received on securities loans, rents, royalties, and income from similar sources ...						
9 Net income from unrelated business activities, whether or not the business is regularly carried on ...						
10 Other income. Do not include gain or loss from the sale of capital assets (Explain in Part VI.)						
11 Total support. Add lines 7 through 10						
12 Gross receipts from related activities, etc. (see instructions)					12	
13 First five years. If the Form 990 is for the organization's first, second, third, fourth, or fifth tax year as a section 501(c)(3) organization, check this box and stop here						<input type="checkbox"/>

Section C. Computation of Public Support Percentage

14 Public support percentage for 2019 (line 6, column (f) divided by line 11, column (f))	14	%
15 Public support percentage from 2018 Schedule A, Part II, line 14	15	%
16a 33 1/3% support test - 2019. If the organization did not check the box on line 13, and line 14 is 33 1/3% or more, check this box and stop here. The organization qualifies as a publicly supported organization		<input type="checkbox"/>
b 33 1/3% support test - 2018. If the organization did not check a box on line 13 or 16a, and line 15 is 33 1/3% or more, check this box and stop here. The organization qualifies as a publicly supported organization		<input type="checkbox"/>
17a 10% -facts-and-circumstances test - 2019. If the organization did not check a box on line 13, 16a, or 16b, and line 14 is 10% or more, and if the organization meets the "facts-and-circumstances" test, check this box and stop here. Explain in Part VI how the organization meets the "facts-and-circumstances" test. The organization qualifies as a publicly supported organization		<input type="checkbox"/>
b 10% -facts-and-circumstances test - 2018. If the organization did not check a box on line 13, 16a, 16b, or 17a, and line 15 is 10% or more, and if the organization meets the "facts-and-circumstances" test, check this box and stop here. Explain in Part VI how the organization meets the "facts-and-circumstances" test. The organization qualifies as a publicly supported organization		<input type="checkbox"/>
18 Private foundation. If the organization did not check a box on line 13, 16a, 16b, 17a, or 17b, check this box and see instructions		<input type="checkbox"/>

Part III Support Schedule for Organizations Described in Section 509(a)(2)

(Complete only if you checked the box on line 10 of Part I or if the organization failed to qualify under Part II. If the organization fails to qualify under the tests listed below, please complete Part II.)

Section A. Public Support

Calendar year (or fiscal year beginning in) ►	(a) 2015	(b) 2016	(c) 2017	(d) 2018	(e) 2019	(f) Total
1 Gifts, grants, contributions, and membership fees received. (Do not include any "unusual grants.")	36,685.	1160480.	37,920.	40,932.	42,996.	1319013.
2 Gross receipts from admissions, merchandise sold or services performed, or facilities furnished in any activity that is related to the organization's tax-exempt purpose	21483413.	5310561.	21512811.	23014724.	24246703.	95568212.
3 Gross receipts from activities that are not an unrelated trade or business under section 513						
4 Tax revenues levied for the organization's benefit and either paid to or expended on its behalf						
5 The value of services or facilities furnished by a governmental unit to the organization without charge						
6 Total. Add lines 1 through 5	21520098.	6471041.	21550731.	23055656.	24289699.	96887225.
7a Amounts included on lines 1, 2, and 3 received from disqualified persons						0.
b Amounts included on lines 2 and 3 received from other than disqualified persons that exceed the greater of \$5,000 or 1% of the amount on line 13 for the year						0.
c Add lines 7a and 7b						0.
8 Public support. (Subtract line 7c from line 6.)						96887225.

Section B. Total Support

Calendar year (or fiscal year beginning in) ►	(a) 2015	(b) 2016	(c) 2017	(d) 2018	(e) 2019	(f) Total
9 Amounts from line 6	21520098.	6471041.	21550731.	23055656.	24289699.	96887225.
10a Gross income from interest, dividends, payments received on securities loans, rents, royalties, and income from similar sources	251,190.	67,212.	301,049.	325,997.	379,050.	1324498.
b Unrelated business taxable income (less section 511 taxes) from businesses acquired after June 30, 1975						
c Add lines 10a and 10b	251,190.	67,212.	301,049.	325,997.	379,050.	1324498.
11 Net income from unrelated business activities not included in line 10b, whether or not the business is regularly carried on						
12 Other income. Do not include gain or loss from the sale of capital assets (Explain in Part VI.)				272,612.	187,766.	460,378.
13 Total support. (Add lines 9, 10c, 11, and 12.)	21771288.	6538253.	21851780.	23654265.	24856515.	98672101.

14 First five years. If the Form 990 is for the organization's first, second, third, fourth, or fifth tax year as a section 501(c)(3) organization, check this box and **stop here**

Section C. Computation of Public Support Percentage

15 Public support percentage for 2019 (line 8, column (f), divided by line 13, column (f))	15	98.19 %
16 Public support percentage from 2018 Schedule A, Part III, line 15	16	98.47 %

Section D. Computation of Investment Income Percentage

17 Investment income percentage for 2019 (line 10c, column (f), divided by line 13, column (f))	17	1.34 %
18 Investment income percentage from 2018 Schedule A, Part III, line 17	18	1.24 %

19a 33 1/3% support tests - 2019. If the organization did not check the box on line 14, and line 15 is more than 33 1/3%, and line 17 is not more than 33 1/3%, check this box and **stop here**. The organization qualifies as a publicly supported organization

b 33 1/3% support tests - 2018. If the organization did not check a box on line 14 or line 19a, and line 16 is more than 33 1/3%, and line 18 is not more than 33 1/3%, check this box and **stop here**. The organization qualifies as a publicly supported organization

20 Private foundation. If the organization did not check a box on line 14, 19a, or 19b, check this box and see instructions

Part IV Supporting Organizations

(Complete only if you checked a box in line 12 on Part I. If you checked 12a of Part I, complete Sections A and B. If you checked 12b of Part I, complete Sections A and C. If you checked 12c of Part I, complete Sections A, D, and E. If you checked 12d of Part I, complete Sections A and D, and complete Part V.)

Section A. All Supporting Organizations

	Yes	No
1 Are all of the organization's supported organizations listed by name in the organization's governing documents? <i>If "No," describe in Part VI how the supported organizations are designated. If designated by class or purpose, describe the designation. If historic and continuing relationship, explain.</i>		
2 Did the organization have any supported organization that does not have an IRS determination of status under section 509(a)(1) or (2)? <i>If "Yes," explain in Part VI how the organization determined that the supported organization was described in section 509(a)(1) or (2).</i>		
3a Did the organization have a supported organization described in section 501(c)(4), (5), or (6)? <i>If "Yes," answer (b) and (c) below.</i>		
b Did the organization confirm that each supported organization qualified under section 501(c)(4), (5), or (6) and satisfied the public support tests under section 509(a)(2)? <i>If "Yes," describe in Part VI when and how the organization made the determination.</i>		
c Did the organization ensure that all support to such organizations was used exclusively for section 170(c)(2)(B) purposes? <i>If "Yes," explain in Part VI what controls the organization put in place to ensure such use.</i>		
4a Was any supported organization not organized in the United States ("foreign supported organization")? <i>If "Yes," and if you checked 12a or 12b in Part I, answer (b) and (c) below.</i>		
b Did the organization have ultimate control and discretion in deciding whether to make grants to the foreign supported organization? <i>If "Yes," describe in Part VI how the organization had such control and discretion despite being controlled or supervised by or in connection with its supported organizations.</i>		
c Did the organization support any foreign supported organization that does not have an IRS determination under sections 501(c)(3) and 509(a)(1) or (2)? <i>If "Yes," explain in Part VI what controls the organization used to ensure that all support to the foreign supported organization was used exclusively for section 170(c)(2)(B) purposes.</i>		
5a Did the organization add, substitute, or remove any supported organizations during the tax year? <i>If "Yes," answer (b) and (c) below (if applicable). Also, provide detail in Part VI, including (i) the names and EIN numbers of the supported organizations added, substituted, or removed; (ii) the reasons for each such action; (iii) the authority under the organization's organizing document authorizing such action; and (iv) how the action was accomplished (such as by amendment to the organizing document).</i>		
b Type I or Type II only. Was any added or substituted supported organization part of a class already designated in the organization's organizing document?		
c Substitutions only. Was the substitution the result of an event beyond the organization's control?		
6 Did the organization provide support (whether in the form of grants or the provision of services or facilities) to anyone other than (i) its supported organizations, (ii) individuals that are part of the charitable class benefited by one or more of its supported organizations, or (iii) other supporting organizations that also support or benefit one or more of the filing organization's supported organizations? <i>If "Yes," provide detail in Part VI.</i>		
7 Did the organization provide a grant, loan, compensation, or other similar payment to a substantial contributor (as defined in section 4958(c)(3)(C)), a family member of a substantial contributor, or a 35% controlled entity with regard to a substantial contributor? <i>If "Yes," complete Part I of Schedule L (Form 990 or 990-EZ).</i>		
8 Did the organization make a loan to a disqualified person (as defined in section 4958) not described in line 7? <i>If "Yes," complete Part I of Schedule L (Form 990 or 990-EZ).</i>		
9a Was the organization controlled directly or indirectly at any time during the tax year by one or more disqualified persons as defined in section 4946 (other than foundation managers and organizations described in section 509(a)(1) or (2))? <i>If "Yes," provide detail in Part VI.</i>		
b Did one or more disqualified persons (as defined in line 9a) hold a controlling interest in any entity in which the supporting organization had an interest? <i>If "Yes," provide detail in Part VI.</i>		
c Did a disqualified person (as defined in line 9a) have an ownership interest in, or derive any personal benefit from, assets in which the supporting organization also had an interest? <i>If "Yes," provide detail in Part VI.</i>		
10a Was the organization subject to the excess business holdings rules of section 4943 because of section 4943(f) (regarding certain Type II supporting organizations, and all Type III non-functionally integrated supporting organizations)? <i>If "Yes," answer 10b below.</i>		
b Did the organization have any excess business holdings in the tax year? <i>(Use Schedule C, Form 4720, to determine whether the organization had excess business holdings.)</i>		

Part IV Supporting Organizations (continued)

	Yes	No
11 Has the organization accepted a gift or contribution from any of the following persons?		
a A person who directly or indirectly controls, either alone or together with persons described in (b) and (c) below, the governing body of a supported organization?		
b A family member of a person described in (a) above?		
c A 35% controlled entity of a person described in (a) or (b) above? <i>If "Yes" to a, b, or c, provide detail in Part VI.</i>		

Section B. Type I Supporting Organizations

	Yes	No
1 Did the directors, trustees, or membership of one or more supported organizations have the power to regularly appoint or elect at least a majority of the organization's directors or trustees at all times during the tax year? <i>If "No," describe in Part VI how the supported organization(s) effectively operated, supervised, or controlled the organization's activities. If the organization had more than one supported organization, describe how the powers to appoint and/or remove directors or trustees were allocated among the supported organizations and what conditions or restrictions, if any, applied to such powers during the tax year.</i>		
2 Did the organization operate for the benefit of any supported organization other than the supported organization(s) that operated, supervised, or controlled the supporting organization? <i>If "Yes," explain in Part VI how providing such benefit carried out the purposes of the supported organization(s) that operated, supervised, or controlled the supporting organization.</i>		

Section C. Type II Supporting Organizations

	Yes	No
1 Were a majority of the organization's directors or trustees during the tax year also a majority of the directors or trustees of each of the organization's supported organization(s)? <i>If "No," describe in Part VI how control or management of the supporting organization was vested in the same persons that controlled or managed the supported organization(s).</i>		

Section D. All Type III Supporting Organizations

	Yes	No
1 Did the organization provide to each of its supported organizations, by the last day of the fifth month of the organization's tax year, (i) a written notice describing the type and amount of support provided during the prior tax year, (ii) a copy of the Form 990 that was most recently filed as of the date of notification, and (iii) copies of the organization's governing documents in effect on the date of notification, to the extent not previously provided?		
2 Were any of the organization's officers, directors, or trustees either (i) appointed or elected by the supported organization(s) or (ii) serving on the governing body of a supported organization? <i>If "No," explain in Part VI how the organization maintained a close and continuous working relationship with the supported organization(s).</i>		
3 By reason of the relationship described in (2), did the organization's supported organizations have a significant voice in the organization's investment policies and in directing the use of the organization's income or assets at all times during the tax year? <i>If "Yes," describe in Part VI the role the organization's supported organizations played in this regard.</i>		

Section E. Type III Functionally Integrated Supporting Organizations

1 Check the box next to the method that the organization used to satisfy the Integral Part Test during the year (see instructions).		
a <input type="checkbox"/> The organization satisfied the Activities Test. Complete line 2 below.		
b <input type="checkbox"/> The organization is the parent of each of its supported organizations. Complete line 3 below.		
c <input type="checkbox"/> The organization supported a governmental entity. Describe in Part VI how you supported a government entity (see instructions).		
2 Activities Test. Answer (a) and (b) below.		
a Did substantially all of the organization's activities during the tax year directly further the exempt purposes of the supported organization(s) to which the organization was responsive? <i>If "Yes," then in Part VI identify those supported organizations and explain how these activities directly furthered their exempt purposes, how the organization was responsive to those supported organizations, and how the organization determined that these activities constituted substantially all of its activities.</i>		
b Did the activities described in (a) constitute activities that, but for the organization's involvement, one or more of the organization's supported organization(s) would have been engaged in? <i>If "Yes," explain in Part VI the reasons for the organization's position that its supported organization(s) would have engaged in these activities but for the organization's involvement.</i>		
3 Parent of Supported Organizations. Answer (a) and (b) below.		
a Did the organization have the power to regularly appoint or elect a majority of the officers, directors, or trustees of each of the supported organizations? <i>Provide details in Part VI.</i>		
b Did the organization exercise a substantial degree of direction over the policies, programs, and activities of each of its supported organizations? <i>If "Yes," describe in Part VI the role played by the organization in this regard.</i>		

Part V Type III Non-Functionally Integrated 509(a)(3) Supporting Organizations

- 1 Check here if the organization satisfied the Integral Part Test as a qualifying trust on Nov. 20, 1970 (explain in Part VI). **See instructions.** All other Type III non-functionally integrated supporting organizations must complete Sections A through E.

Section A - Adjusted Net Income		(A) Prior Year	(B) Current Year (optional)
1	Net short-term capital gain	1	
2	Recoveries of prior-year distributions	2	
3	Other gross income (see instructions)	3	
4	Add lines 1 through 3.	4	
5	Depreciation and depletion	5	
6	Portion of operating expenses paid or incurred for production or collection of gross income or for management, conservation, or maintenance of property held for production of income (see instructions)	6	
7	Other expenses (see instructions)	7	
8	Adjusted Net Income (subtract lines 5, 6, and 7 from line 4)	8	

Section B - Minimum Asset Amount		(A) Prior Year	(B) Current Year (optional)
1	Aggregate fair market value of all non-exempt-use assets (see instructions for short tax year or assets held for part of year):		
a	Average monthly value of securities	1a	
b	Average monthly cash balances	1b	
c	Fair market value of other non-exempt-use assets	1c	
d	Total (add lines 1a, 1b, and 1c)	1d	
e	Discount claimed for blockage or other factors (explain in detail in Part VI):		
2	Acquisition indebtedness applicable to non-exempt-use assets	2	
3	Subtract line 2 from line 1d.	3	
4	Cash deemed held for exempt use. Enter 1-1/2% of line 3 (for greater amount, see instructions).	4	
5	Net value of non-exempt-use assets (subtract line 4 from line 3)	5	
6	Multiply line 5 by .035.	6	
7	Recoveries of prior-year distributions	7	
8	Minimum Asset Amount (add line 7 to line 6)	8	

Section C - Distributable Amount		(A) Prior Year	Current Year
1	Adjusted net income for prior year (from Section A, line 8, Column A)	1	
2	Enter 85% of line 1.	2	
3	Minimum asset amount for prior year (from Section B, line 8, Column A)	3	
4	Enter greater of line 2 or line 3.	4	
5	Income tax imposed in prior year	5	
6	Distributable Amount. Subtract line 5 from line 4, unless subject to emergency temporary reduction (see instructions).	6	
7	<input type="checkbox"/> Check here if the current year is the organization's first as a non-functionally integrated Type III supporting organization (see instructions).		

Schedule A (Form 990 or 990-EZ) 2019

Part V Type III Non-Functionally Integrated 509(a)(3) Supporting Organizations (continued)

Section D - Distributions	Current Year
1 Amounts paid to supported organizations to accomplish exempt purposes	
2 Amounts paid to perform activity that directly furthers exempt purposes of supported organizations, in excess of income from activity	
3 Administrative expenses paid to accomplish exempt purposes of supported organizations	
4 Amounts paid to acquire exempt-use assets	
5 Qualified set-aside amounts (prior IRS approval required)	
6 Other distributions (describe in Part VI). See instructions.	
7 Total annual distributions. Add lines 1 through 6.	
8 Distributions to attentive supported organizations to which the organization is responsive (provide details in Part VI). See instructions.	
9 Distributable amount for 2019 from Section C, line 6	
10 Line 8 amount divided by line 9 amount	

Section E - Distribution Allocations (see instructions)	(i) Excess Distributions	(ii) Underdistributions Pre-2019	(iii) Distributable Amount for 2019
1 Distributable amount for 2019 from Section C, line 6			
2 Underdistributions, if any, for years prior to 2019 (reasonable cause required- explain in Part VI). See instructions.			
3 Excess distributions carryover, if any, to 2019			
a From 2014			
b From 2015			
c From 2016			
d From 2017			
e From 2018			
f Total of lines 3a through e			
g Applied to underdistributions of prior years			
h Applied to 2019 distributable amount			
i Carryover from 2014 not applied (see instructions)			
j Remainder. Subtract lines 3g, 3h, and 3i from 3f.			
4 Distributions for 2019 from Section D, line 7: \$			
a Applied to underdistributions of prior years			
b Applied to 2019 distributable amount			
c Remainder. Subtract lines 4a and 4b from 4.			
5 Remaining underdistributions for years prior to 2019, if any. Subtract lines 3g and 4a from line 2. For result greater than zero, explain in Part VI . See instructions.			
6 Remaining underdistributions for 2019. Subtract lines 3h and 4b from line 1. For result greater than zero, explain in Part VI . See instructions.			
7 Excess distributions carryover to 2020. Add lines 3j and 4c.			
8 Breakdown of line 7:			
a Excess from 2015			
b Excess from 2016			
c Excess from 2017			
d Excess from 2018			
e Excess from 2019			

Part VI **Supplemental Information.** Provide the explanations required by Part II, line 10; Part II, line 17a or 17b; Part III, line 12; Part IV, Section A, lines 1, 2, 3b, 3c, 4b, 4c, 5a, 6, 9a, 9b, 9c, 11a, 11b, and 11c; Part IV, Section B, lines 1 and 2; Part IV, Section C, line 1; Part IV, Section D, lines 2 and 3; Part IV, Section E, lines 1c, 2a, 2b, 3a, and 3b; Part V, line 1; Part V, Section B, line 1e; Part V, Section D, lines 5, 6, and 8; and Part V, Section E, lines 2, 5, and 6. Also complete this part for any additional information. (See instructions.)

SCHEDULE A, PART III, LINE 12, EXPLANATION FOR OTHER INCOME:

OTHER INCOME

2018 AMOUNT: \$ 272,612.

2019 AMOUNT: \$ 187,766.

SCHEDULE A, PART VI:

2016 IS A SHORTENED 3 MONTH TAX YEAR IN CONJUNCTION WITH CONVERTING FROM A 9/30 TO 12/31 FISCAL YEAR END.

Schedule B

(Form 990, 990-EZ, or 990-PF)

Department of the Treasury Internal Revenue Service

Schedule of Contributors

Attach to Form 990, Form 990-EZ, or Form 990-PF. Go to www.irs.gov/Form990 for the latest information.

OMB No. 1545-0047

2019

Name of the organization

HUMANGOOD ARIZONA, INC.

Employer identification number

86-0176446

Organization type (check one):

Filers of:

Section:

Form 990 or 990-EZ

[X] 501(c)(3) (enter number) organization

[] 4947(a)(1) nonexempt charitable trust not treated as a private foundation

[] 527 political organization

Form 990-PF

[] 501(c)(3) exempt private foundation

[] 4947(a)(1) nonexempt charitable trust treated as a private foundation

[] 501(c)(3) taxable private foundation

Check if your organization is covered by the General Rule or a Special Rule.

Note: Only a section 501(c)(7), (8), or (10) organization can check boxes for both the General Rule and a Special Rule. See instructions.

General Rule

[X] For an organization filing Form 990, 990-EZ, or 990-PF that received, during the year, contributions totaling \$5,000 or more (in money or property) from any one contributor. Complete Parts I and II. See instructions for determining a contributor's total contributions.

Special Rules

[] For an organization described in section 501(c)(3) filing Form 990 or 990-EZ that met the 33 1/3% support test of the regulations under sections 509(a)(1) and 170(b)(1)(A)(vi), that checked Schedule A (Form 990 or 990-EZ), Part II, line 13, 16a, or 16b, and that received from any one contributor, during the year, total contributions of the greater of (1) \$5,000; or (2) 2% of the amount on (i) Form 990, Part VIII, line 1h; or (ii) Form 990-EZ, line 1. Complete Parts I and II.

[] For an organization described in section 501(c)(7), (8), or (10) filing Form 990 or 990-EZ that received from any one contributor, during the year, total contributions of more than \$1,000 exclusively for religious, charitable, scientific, literary, or educational purposes, or for the prevention of cruelty to children or animals. Complete Parts I, II, and III.

[] For an organization described in section 501(c)(7), (8), or (10) filing Form 990 or 990-EZ that received from any one contributor, during the year, contributions exclusively for religious, charitable, etc., purposes, but no such contributions totaled more than \$1,000. If this box is checked, enter here the total contributions that were received during the year for an exclusively religious, charitable, etc., purpose. Don't complete any of the parts unless the General Rule applies to this organization because it received nonexclusively religious, charitable, etc., contributions totaling \$5,000 or more during the year ... \$

Caution: An organization that isn't covered by the General Rule and/or the Special Rules doesn't file Schedule B (Form 990, 990-EZ, or 990-PF), but it must answer "No" on Part IV, line 2, of its Form 990; or check the box on line H of its Form 990-EZ or on its Form 990-PF, Part I, line 2, to certify that it doesn't meet the filing requirements of Schedule B (Form 990, 990-EZ, or 990-PF).

Name of organization HUMANGOOD ARIZONA, INC.	Employer identification number 86-0176446
--	---

Part I Contributors (see instructions). Use duplicate copies of Part I if additional space is needed.

(a) No.	(b) Name, address, and ZIP + 4	(c) Total contributions	(d) Type of contribution
1	<hr/> <hr/> <hr/>	\$ <u>42,996.</u>	Person <input checked="" type="checkbox"/> Payroll <input type="checkbox"/> Noncash <input type="checkbox"/> (Complete Part II for noncash contributions.)
_____	<hr/> <hr/> <hr/>	\$ _____	Person <input type="checkbox"/> Payroll <input type="checkbox"/> Noncash <input type="checkbox"/> (Complete Part II for noncash contributions.)
_____	<hr/> <hr/> <hr/>	\$ _____	Person <input type="checkbox"/> Payroll <input type="checkbox"/> Noncash <input type="checkbox"/> (Complete Part II for noncash contributions.)
_____	<hr/> <hr/> <hr/>	\$ _____	Person <input type="checkbox"/> Payroll <input type="checkbox"/> Noncash <input type="checkbox"/> (Complete Part II for noncash contributions.)
_____	<hr/> <hr/> <hr/>	\$ _____	Person <input type="checkbox"/> Payroll <input type="checkbox"/> Noncash <input type="checkbox"/> (Complete Part II for noncash contributions.)
_____	<hr/> <hr/> <hr/>	\$ _____	Person <input type="checkbox"/> Payroll <input type="checkbox"/> Noncash <input type="checkbox"/> (Complete Part II for noncash contributions.)
_____	<hr/> <hr/> <hr/>	\$ _____	Person <input type="checkbox"/> Payroll <input type="checkbox"/> Noncash <input type="checkbox"/> (Complete Part II for noncash contributions.)

Name of organization HUMANGOOD ARIZONA, INC.	Employer identification number 86-0176446
--	---

Part II Noncash Property (see instructions). Use duplicate copies of Part II if additional space is needed.

(a) No. from Part I	(b) Description of noncash property given	(c) FMV (or estimate) (See instructions.)	(d) Date received
	_____	\$ _____	_____
	_____	\$ _____	_____
	_____	\$ _____	_____
	_____	\$ _____	_____
	_____	\$ _____	_____
	_____	\$ _____	_____
	_____	\$ _____	_____
	_____	\$ _____	_____

Name of organization HUMANGOOD ARIZONA, INC.	Employer identification number 86-0176446
--	---

Part III Exclusively religious, charitable, etc., contributions to organizations described in section 501(c)(7), (8), or (10) that total more than \$1,000 for the year from any one contributor. Complete columns (a) through (e) and the following line entry. For organizations completing Part III, enter the total of exclusively religious, charitable, etc., contributions of **\$1,000 or less** for the year. (Enter this info. once.) ▶ \$ _____
Use duplicate copies of Part III if additional space is needed.

(a) No. from Part I	(b) Purpose of gift	(c) Use of gift	(d) Description of how gift is held
(e) Transfer of gift			
Transferee's name, address, and ZIP + 4		Relationship of transferor to transferee	
(e) Transfer of gift			
Transferee's name, address, and ZIP + 4		Relationship of transferor to transferee	
(e) Transfer of gift			
Transferee's name, address, and ZIP + 4		Relationship of transferor to transferee	
(e) Transfer of gift			
Transferee's name, address, and ZIP + 4		Relationship of transferor to transferee	
(e) Transfer of gift			
Transferee's name, address, and ZIP + 4		Relationship of transferor to transferee	

SCHEDULE C
(Form 990 or 990-EZ)

Political Campaign and Lobbying Activities

OMB No. 1545-0047

2019

Open to Public Inspection

Department of the Treasury
Internal Revenue Service

For Organizations Exempt From Income Tax Under section 501(c) and section 527
 ► **Complete if the organization is described below.** ► **Attach to Form 990 or Form 990-EZ.**
 ► **Go to www.irs.gov/Form990 for instructions and the latest information.**

If the organization answered "Yes," on Form 990, Part IV, line 3, or Form 990-EZ, Part V, line 46 (Political Campaign Activities), then

- Section 501(c)(3) organizations: Complete Parts I-A and B. Do not complete Part I-C.
- Section 501(c) (other than section 501(c)(3)) organizations: Complete Parts I-A and C below. Do not complete Part I-B.
- Section 527 organizations: Complete Part I-A only.

If the organization answered "Yes," on Form 990, Part IV, line 4, or Form 990-EZ, Part VI, line 47 (Lobbying Activities), then

- Section 501(c)(3) organizations that have filed Form 5768 (election under section 501(h)): Complete Part II-A. Do not complete Part II-B.
- Section 501(c)(3) organizations that have NOT filed Form 5768 (election under section 501(h)): Complete Part II-B. Do not complete Part II-A.

If the organization answered "Yes," on Form 990, Part IV, line 5 (Proxy Tax) (see separate instructions) or Form 990-EZ, Part V, line 35c (Proxy Tax) (see separate instructions), then

- Section 501(c)(4), (5), or (6) organizations: Complete Part III.

Name of organization HUMANGOOD ARIZONA, INC.	Employer identification number 86-0176446
--	---

Part I-A Complete if the organization is exempt under section 501(c) or is a section 527 organization.

- 1 Provide a description of the organization's direct and indirect political campaign activities in Part IV.
- 2 Political campaign activity expenditures ► \$ _____
- 3 Volunteer hours for political campaign activities _____

Part I-B Complete if the organization is exempt under section 501(c)(3).

- 1 Enter the amount of any excise tax incurred by the organization under section 4955 ► \$ _____
- 2 Enter the amount of any excise tax incurred by organization managers under section 4955 ► \$ _____
- 3 If the organization incurred a section 4955 tax, did it file Form 4720 for this year? Yes No
- 4a Was a correction made? Yes No
- b If "Yes," describe in Part IV.

Part I-C Complete if the organization is exempt under section 501(c), except section 501(c)(3).

- 1 Enter the amount directly expended by the filing organization for section 527 exempt function activities ► \$ _____
- 2 Enter the amount of the filing organization's funds contributed to other organizations for section 527 exempt function activities ► \$ _____
- 3 Total exempt function expenditures. Add lines 1 and 2. Enter here and on Form 1120-POL, line 17b ► \$ _____
- 4 Did the filing organization file **Form 1120-POL** for this year? Yes No
- 5 Enter the names, addresses and employer identification number (EIN) of all section 527 political organizations to which the filing organization made payments. For each organization listed, enter the amount paid from the filing organization's funds. Also enter the amount of political contributions received that were promptly and directly delivered to a separate political organization, such as a separate segregated fund or a political action committee (PAC). If additional space is needed, provide information in Part IV.

(a) Name	(b) Address	(c) EIN	(d) Amount paid from filing organization's funds. If none, enter -0-.	(e) Amount of political contributions received and promptly and directly delivered to a separate political organization. If none, enter -0-.

Part II-A Complete if the organization is exempt under section 501(c)(3) and filed Form 5768 (election under section 501(h)).

- A** Check if the filing organization belongs to an affiliated group (and list in Part IV each affiliated group member's name, address, EIN, expenses, and share of excess lobbying expenditures).
- B** Check if the filing organization checked box A and "limited control" provisions apply.

Limits on Lobbying Expenditures (The term "expenditures" means amounts paid or incurred.)		(a) Filing organization's totals	(b) Affiliated group totals												
1a	Total lobbying expenditures to influence public opinion (grassroots lobbying)														
b	Total lobbying expenditures to influence a legislative body (direct lobbying)														
c	Total lobbying expenditures (add lines 1a and 1b)														
d	Other exempt purpose expenditures														
e	Total exempt purpose expenditures (add lines 1c and 1d)														
f	Lobbying nontaxable amount. Enter the amount from the following table in both columns.														
<table border="1" style="width: 100%;"> <thead> <tr> <th style="width: 50%;">If the amount on line 1e, column (a) or (b) is:</th> <th style="width: 50%;">The lobbying nontaxable amount is:</th> </tr> </thead> <tbody> <tr> <td>Not over \$500,000</td> <td>20% of the amount on line 1e.</td> </tr> <tr> <td>Over \$500,000 but not over \$1,000,000</td> <td>\$100,000 plus 15% of the excess over \$500,000.</td> </tr> <tr> <td>Over \$1,000,000 but not over \$1,500,000</td> <td>\$175,000 plus 10% of the excess over \$1,000,000.</td> </tr> <tr> <td>Over \$1,500,000 but not over \$17,000,000</td> <td>\$225,000 plus 5% of the excess over \$1,500,000.</td> </tr> <tr> <td>Over \$17,000,000</td> <td>\$1,000,000.</td> </tr> </tbody> </table>		If the amount on line 1e, column (a) or (b) is:	The lobbying nontaxable amount is:	Not over \$500,000	20% of the amount on line 1e.	Over \$500,000 but not over \$1,000,000	\$100,000 plus 15% of the excess over \$500,000.	Over \$1,000,000 but not over \$1,500,000	\$175,000 plus 10% of the excess over \$1,000,000.	Over \$1,500,000 but not over \$17,000,000	\$225,000 plus 5% of the excess over \$1,500,000.	Over \$17,000,000	\$1,000,000.		
If the amount on line 1e, column (a) or (b) is:	The lobbying nontaxable amount is:														
Not over \$500,000	20% of the amount on line 1e.														
Over \$500,000 but not over \$1,000,000	\$100,000 plus 15% of the excess over \$500,000.														
Over \$1,000,000 but not over \$1,500,000	\$175,000 plus 10% of the excess over \$1,000,000.														
Over \$1,500,000 but not over \$17,000,000	\$225,000 plus 5% of the excess over \$1,500,000.														
Over \$17,000,000	\$1,000,000.														
g	Grassroots nontaxable amount (enter 25% of line 1f)														
h	Subtract line 1g from line 1a. If zero or less, enter -0-														
i	Subtract line 1f from line 1c. If zero or less, enter -0-														
j	If there is an amount other than zero on either line 1h or line 1i, did the organization file Form 4720 reporting section 4911 tax for this year?														

Yes No

4-Year Averaging Period Under Section 501(h)
(Some organizations that made a section 501(h) election do not have to complete all of the five columns below. See the separate instructions for lines 2a through 2f.)

Lobbying Expenditures During 4-Year Averaging Period					
Calendar year (or fiscal year beginning in)	(a) 2016	(b) 2017	(c) 2018	(d) 2019	(e) Total
2a Lobbying nontaxable amount					
b Lobbying ceiling amount (150% of line 2a, column(e))					
c Total lobbying expenditures					
d Grassroots nontaxable amount					
e Grassroots ceiling amount (150% of line 2d, column (e))					
f Grassroots lobbying expenditures					

Part II-B Complete if the organization is exempt under section 501(c)(3) and has NOT filed Form 5768 (election under section 501(h)).

	(a)		(b)
	Yes	No	Amount
1 During the year, did the filing organization attempt to influence foreign, national, state, or local legislation, including any attempt to influence public opinion on a legislative matter or referendum, through the use of:			
a Volunteers?		X	
b Paid staff or management (include compensation in expenses reported on lines 1c through 1i)?		X	
c Media advertisements?		X	
d Mailings to members, legislators, or the public?		X	
e Publications, or published or broadcast statements?		X	
f Grants to other organizations for lobbying purposes?		X	
g Direct contact with legislators, their staffs, government officials, or a legislative body?		X	
h Rallies, demonstrations, seminars, conventions, speeches, lectures, or any similar means?		X	
i Other activities?	X		1,038.
j Total. Add lines 1c through 1i			1,038.
2a Did the activities in line 1 cause the organization to be not described in section 501(c)(3)?		X	
b If "Yes," enter the amount of any tax incurred under section 4912			
c If "Yes," enter the amount of any tax incurred by organization managers under section 4912			
d If the filing organization incurred a section 4912 tax, did it file Form 4720 for this year?			

Part III-A Complete if the organization is exempt under section 501(c)(4), section 501(c)(5), or section 501(c)(6).

	Yes	No
1 Were substantially all (90% or more) dues received nondeductible by members?	1	
2 Did the organization make only in-house lobbying expenditures of \$2,000 or less?	2	
3 Did the organization agree to carry over lobbying and political campaign activity expenditures from the prior year?	3	

Part III-B Complete if the organization is exempt under section 501(c)(4), section 501(c)(5), or section 501(c)(6) and if either (a) BOTH Part III-A, lines 1 and 2, are answered "No" OR (b) Part III-A, line 3, is answered "Yes."

1 Dues, assessments and similar amounts from members	1
2 Section 162(e) nondeductible lobbying and political expenditures (do not include amounts of political expenses for which the section 527(f) tax was paid).	
a Current year	2a
b Carryover from last year	2b
c Total	2c
3 Aggregate amount reported in section 6033(e)(1)(A) notices of nondeductible section 162(e) dues	3
4 If notices were sent and the amount on line 2c exceeds the amount on line 3, what portion of the excess does the organization agree to carryover to the reasonable estimate of nondeductible lobbying and political expenditure next year?	4
5 Taxable amount of lobbying and political expenditures (see instructions)	5

Part IV Supplemental Information

Provide the descriptions required for Part I-A, line 1; Part I-B, line 4; Part I-C, line 5; Part II-A (affiliated group list); Part II-A, lines 1 and 2 (see instructions); and Part II-B, line 1. Also, complete this part for any additional information.

PART II-B, LINE 1, LOBBYING ACTIVITIES:

THE ORGANIZATION PAYS DUES TO LEADING AGE, A PORTION OF WHICH IS CONSIDERED LOBBYING.

SCHEDULE D (Form 990)

Department of the Treasury Internal Revenue Service

Supplemental Financial Statements

Complete if the organization answered "Yes" on Form 990, Part IV, line 6, 7, 8, 9, 10, 11a, 11b, 11c, 11d, 11e, 11f, 12a, or 12b. Attach to Form 990.

Go to www.irs.gov/Form990 for instructions and the latest information.

OMB No. 1545-0047

2019

Open to Public Inspection

Name of the organization HUMANGOOD ARIZONA, INC. Employer identification number 86-0176446

Part I Organizations Maintaining Donor Advised Funds or Other Similar Funds or Accounts. Complete if the organization answered "Yes" on Form 990, Part IV, line 6.

Table with 3 columns: Question, (a) Donor advised funds, (b) Funds and other accounts. Rows include total number at end of year, aggregate value of contributions, grants, and end of year, and two Yes/No questions regarding donor property and grant fund usage.

Part II Conservation Easements. Complete if the organization answered "Yes" on Form 990, Part IV, line 7.

Form with multiple sections: 1. Purpose(s) of conservation easements (checkboxes for land, habitat, open space, historic area, structure). 2. Conservation contribution details (2a-2d table). 3-7. Monitoring and enforcement details. 8-9. Section 170(h)(4)(B) requirements and reporting.

Part III Organizations Maintaining Collections of Art, Historical Treasures, or Other Similar Assets. Complete if the organization answered "Yes" on Form 990, Part IV, line 8.

Form with sections 1a-1b and 2. 1a: Reporting on revenue and assets for public exhibition. 1b: Reporting on revenue and assets for public exhibition. 2: Reporting on revenue and assets for financial gain.

Part III Organizations Maintaining Collections of Art, Historical Treasures, or Other Similar Assets (continued)

- 3 Using the organization's acquisition, accession, and other records, check any of the following that make significant use of its collection items (check all that apply):
- a Public exhibition
 - b Scholarly research
 - c Preservation for future generations
 - d Loan or exchange program
 - e Other _____
- 4 Provide a description of the organization's collections and explain how they further the organization's exempt purpose in Part XIII.
- 5 During the year, did the organization solicit or receive donations of art, historical treasures, or other similar assets to be sold to raise funds rather than to be maintained as part of the organization's collection? Yes No

Part IV Escrow and Custodial Arrangements. Complete if the organization answered "Yes" on Form 990, Part IV, line 9, or reported an amount on Form 990, Part X, line 21.

- 1a Is the organization an agent, trustee, custodian or other intermediary for contributions or other assets not included on Form 990, Part X? Yes No
- b If "Yes," explain the arrangement in Part XIII and complete the following table:
- | | Amount |
|---------------------------------|--------|
| c Beginning balance | 1c |
| d Additions during the year | 1d |
| e Distributions during the year | 1e |
| f Ending balance | 1f |
- 2a Did the organization include an amount on Form 990, Part X, line 21, for escrow or custodial account liability? Yes No
- b If "Yes," explain the arrangement in Part XIII. Check here if the explanation has been provided on Part XIII

Part V Endowment Funds. Complete if the organization answered "Yes" on Form 990, Part IV, line 10.

	(a) Current year	(b) Prior year	(c) Two years back	(d) Three years back	(e) Four years back
1a Beginning of year balance					
b Contributions					
c Net investment earnings, gains, and losses					
d Grants or scholarships					
e Other expenditures for facilities and programs					
f Administrative expenses					
g End of year balance					

- 2 Provide the estimated percentage of the current year end balance (line 1g, column (a)) held as:
- a Board designated or quasi-endowment _____ %
 - b Permanent endowment _____ %
 - c Term endowment _____ %
- The percentages on lines 2a, 2b, and 2c should equal 100%.
- 3a Are there endowment funds not in the possession of the organization that are held and administered for the organization by:
- | | Yes | No |
|---|--------|----|
| (i) Unrelated organizations | 3a(i) | |
| (ii) Related organizations | 3a(ii) | |
| b If "Yes" on line 3a(ii), are the related organizations listed as required on Schedule R? <input type="checkbox"/> | 3b | |
- 4 Describe in Part XIII the intended uses of the organization's endowment funds.

Part VI Land, Buildings, and Equipment.

Complete if the organization answered "Yes" on Form 990, Part IV, line 11a. See Form 990, Part X, line 10.

Description of property	(a) Cost or other basis (investment)	(b) Cost or other basis (other)	(c) Accumulated depreciation	(d) Book value
1a Land		160,876.		160,876.
b Buildings		71,174,122.	30,684,480.	40,489,642.
c Leasehold improvements				
d Equipment		4,211,536.	3,258,835.	952,701.
e Other		2,923,772.	1,386,908.	1,536,864.
Total. Add lines 1a through 1e. (Column (d) must equal Form 990, Part X, column (B), line 10c.)				43,140,083.

Part VII Investments - Other Securities.

Complete if the organization answered "Yes" on Form 990, Part IV, line 11b. See Form 990, Part X, line 12.

(a) Description of security or category (including name of security)	(b) Book value	(c) Method of valuation: Cost or end-of-year market value
(1) Financial derivatives		
(2) Closely held equity interests		
(3) Other		
(A)		
(B)		
(C)		
(D)		
(E)		
(F)		
(G)		
(H)		
Total. (Col. (b) must equal Form 990, Part X, col. (B) line 12.) ▶		

Part VIII Investments - Program Related.

Complete if the organization answered "Yes" on Form 990, Part IV, line 11c. See Form 990, Part X, line 13.

(a) Description of investment	(b) Book value	(c) Method of valuation: Cost or end-of-year market value
(1)		
(2)		
(3)		
(4)		
(5)		
(6)		
(7)		
(8)		
(9)		
Total. (Col. (b) must equal Form 990, Part X, col. (B) line 13.) ▶		

Part IX Other Assets.

Complete if the organization answered "Yes" on Form 990, Part IV, line 11d. See Form 990, Part X, line 15.

(a) Description	(b) Book value
(1)	
(2)	
(3)	
(4)	
(5)	
(6)	
(7)	
(8)	
(9)	
Total. (Column (b) must equal Form 990, Part X, col. (B) line 15.) ▶	

Part X Other Liabilities.

Complete if the organization answered "Yes" on Form 990, Part IV, line 11e or 11f. See Form 990, Part X, line 25.

1. (a) Description of liability	(b) Book value
(1) Federal income taxes	
(2) DUE TO AFFILIATES	12,000,000.
(3) OTHER LIABILITIES	245,509.
(4) REBATABLE ENTRANCE FEES DUE	48,374,489.
(5) ENTRANCE FEES SUBJECT TO REFUND	227,021.
(6) ENTRANCE FEES NON-REFUNDABLE	7,859,450.
(7) RESIDENT DEPOSITS	99,000.
(8)	
(9)	
Total. (Column (b) must equal Form 990, Part X, col. (B) line 25.) ▶	68,805,469.

2. Liability for uncertain tax positions. In Part XIII, provide the text of the footnote to the organization's financial statements that reports the organization's liability for uncertain tax positions under FASB ASC 740. Check here if the text of the footnote has been provided in Part XIII ...

Part XI Reconciliation of Revenue per Audited Financial Statements With Revenue per Return.

Complete if the organization answered "Yes" on Form 990, Part IV, line 12a.

1	Total revenue, gains, and other support per audited financial statements	1	24,955,828.
2	Amounts included on line 1 but not on Form 990, Part VIII, line 12:		
a	Net unrealized gains (losses) on investments	2a	293,681.
b	Donated services and use of facilities	2b	
c	Recoveries of prior year grants	2c	
d	Other (Describe in Part XIII.)	2d	-201,109.
e	Add lines 2a through 2d	2e	92,572.
3	Subtract line 2e from line 1	3	24,863,256.
4	Amounts included on Form 990, Part VIII, line 12, but not on line 1:		
a	Investment expenses not included on Form 990, Part VIII, line 7b	4a	
b	Other (Describe in Part XIII.)	4b	
c	Add lines 4a and 4b	4c	0.
5	Total revenue. Add lines 3 and 4c . (This must equal Form 990, Part I, line 12.)	5	24,863,256.

Part XII Reconciliation of Expenses per Audited Financial Statements With Expenses per Return.

Complete if the organization answered "Yes" on Form 990, Part IV, line 12a.

1	Total expenses and losses per audited financial statements	1	25,079,649.
2	Amounts included on line 1 but not on Form 990, Part IX, line 25:		
a	Donated services and use of facilities	2a	
b	Prior year adjustments	2b	
c	Other losses	2c	
d	Other (Describe in Part XIII.)	2d	
e	Add lines 2a through 2d	2e	0.
3	Subtract line 2e from line 1	3	25,079,649.
4	Amounts included on Form 990, Part IX, line 25, but not on line 1:		
a	Investment expenses not included on Form 990, Part VIII, line 7b	4a	
b	Other (Describe in Part XIII.)	4b	44,837.
c	Add lines 4a and 4b	4c	44,837.
5	Total expenses. Add lines 3 and 4c . (This must equal Form 990, Part I, line 18.)	5	25,124,486.

Part XIII Supplemental Information.

Provide the descriptions required for Part II, lines 3, 5, and 9; Part III, lines 1a and 4; Part IV, lines 1b and 2b; Part V, line 4; Part X, line 2; Part XI, lines 2d and 4b; and Part XII, lines 2d and 4b. Also complete this part to provide any additional information.

PART X, LINE 2:

THE CORPORATION ASSESSES UNCERTAIN TAX POSITIONS IN ACCORDANCE WITH THE PROVISIONS OF THE FASB ASC TOPIC 740-10, INCOME TAXES. THE CORPORATION RECOGNIZES THE TAX BENEFIT FROM UNCERTAIN TAX POSITIONS ONLY IF IT IS MORE LIKELY THAN NOT THAT THE TAX POSITIONS WILL BE SUSTAINED ON EXAMINATION BY THE TAX AUTHORITIES, BASED ON THE TECHNICAL MERITS OF THE POSITION. THE TAX BENEFIT IS MEASURED BASED ON THE LARGEST BENEFIT THAT HAS A GREATER THAN 50 PERCENT LIKELIHOOD OF BEING REALIZED UPON ULTIMATE SETTLEMENT. AT DECEMBER 31, 2019 AND 2018, THERE WERE NO SUCH UNCERTAIN TAX POSITIONS.

PART XI, LINE 2D - OTHER ADJUSTMENTS:

CHANGE IN INTEREST RATE SWAP AGREEMENTS -156,272.

Part XIII Supplemental Information *(continued)*

INVESTMENT MANAGEMENT FEES NETTED AGAINST REVENUE ON

FINANCIALS -44,837.

TOTAL TO SCHEDULE D, PART XI, LINE 2D -201,109.

PART XII, LINE 4B - OTHER ADJUSTMENTS:

INVESTMENT MANAGEMENT FEES NETTED AGAINST REVENUE ON

FINANCIALS 44,837.

**SCHEDULE J
(Form 990)**

Department of the Treasury
Internal Revenue Service

Compensation Information

For certain Officers, Directors, Trustees, Key Employees, and Highest Compensated Employees
 ▶ Complete if the organization answered "Yes" on Form 990, Part IV, line 23.
 ▶ Attach to Form 990.
 ▶ Go to www.irs.gov/Form990 for instructions and the latest information.

OMB No. 1545-0047

2019

Open to Public Inspection

Name of the organization

HUMANGOOD ARIZONA, INC.

Employer identification number

86-0176446

Part I Questions Regarding Compensation

1a Check the appropriate box(es) if the organization provided any of the following to or for a person listed on Form 990, Part VII, Section A, line 1a. Complete Part III to provide any relevant information regarding these items.

- | | |
|--|--|
| <input type="checkbox"/> First-class or charter travel | <input type="checkbox"/> Housing allowance or residence for personal use |
| <input type="checkbox"/> Travel for companions | <input type="checkbox"/> Payments for business use of personal residence |
| <input type="checkbox"/> Tax indemnification and gross-up payments | <input type="checkbox"/> Health or social club dues or initiation fees |
| <input type="checkbox"/> Discretionary spending account | <input type="checkbox"/> Personal services (such as maid, chauffeur, chef) |

b If any of the boxes on line 1a are checked, did the organization follow a written policy regarding payment or reimbursement or provision of all of the expenses described above? If "No," complete Part III to explain

2 Did the organization require substantiation prior to reimbursing or allowing expenses incurred by all directors, trustees, and officers, including the CEO/Executive Director, regarding the items checked on line 1a?

3 Indicate which, if any, of the following the organization used to establish the compensation of the organization's CEO/Executive Director. Check all that apply. Do not check any boxes for methods used by a related organization to establish compensation of the CEO/Executive Director, but explain in Part III.

- | | |
|--|--|
| <input type="checkbox"/> Compensation committee | <input type="checkbox"/> Written employment contract |
| <input type="checkbox"/> Independent compensation consultant | <input type="checkbox"/> Compensation survey or study |
| <input type="checkbox"/> Form 990 of other organizations | <input type="checkbox"/> Approval by the board or compensation committee |

4 During the year, did any person listed on Form 990, Part VII, Section A, line 1a, with respect to the filing organization or a related organization:

- a** Receive a severance payment or change-of-control payment?
- b** Participate in, or receive payment from, a supplemental nonqualified retirement plan?
- c** Participate in, or receive payment from, an equity-based compensation arrangement?
- If "Yes" to any of lines 4a-c, list the persons and provide the applicable amounts for each item in Part III.

Only section 501(c)(3), 501(c)(4), and 501(c)(29) organizations must complete lines 5-9.

5 For persons listed on Form 990, Part VII, Section A, line 1a, did the organization pay or accrue any compensation contingent on the revenues of:

- a** The organization?
- b** Any related organization?
- If "Yes" on line 5a or 5b, describe in Part III.

6 For persons listed on Form 990, Part VII, Section A, line 1a, did the organization pay or accrue any compensation contingent on the net earnings of:

- a** The organization?
- b** Any related organization?
- If "Yes" on line 6a or 6b, describe in Part III.

7 For persons listed on Form 990, Part VII, Section A, line 1a, did the organization provide any nonfixed payments not described on lines 5 and 6? If "Yes," describe in Part III

8 Were any amounts reported on Form 990, Part VII, paid or accrued pursuant to a contract that was subject to the initial contract exception described in Regulations section 53.4958-4(a)(3)? If "Yes," describe in Part III

9 If "Yes" on line 8, did the organization also follow the rebuttable presumption procedure described in Regulations section 53.4958-6(c)?

	Yes	No
1a		
1b		
2		
3		
4a	X	
4b		X
4c		X
5a		X
5b		X
6a		X
6b		X
7		X
8		X
9		

LHA For Paperwork Reduction Act Notice, see the Instructions for Form 990.

Schedule J (Form 990) 2019

Part II Officers, Directors, Trustees, Key Employees, and Highest Compensated Employees. Use duplicate copies if additional space is needed.

For each individual whose compensation must be reported on Schedule J, report compensation from the organization on row (i) and from related organizations, described in the instructions, on row (ii). Do not list any individuals that aren't listed on Form 990, Part VII.

Note: The sum of columns (B)(i)-(iii) for each listed individual must equal the total amount of Form 990, Part VII, Section A, line 1a, applicable column (D) and (E) amounts for that individual.

(A) Name and Title		(B) Breakdown of W-2 and/or 1099-MISC compensation			(C) Retirement and other deferred compensation	(D) Nontaxable benefits	(E) Total of columns (B)(i)-(D)	(F) Compensation in column (B) reported as deferred on prior Form 990
		(i) Base compensation	(ii) Bonus & incentive compensation	(iii) Other reportable compensation				
(1) JOHN H. COCHRANE, III PRESIDENT/CHIEF EXECUTIVE OFFICER	(i)	0.	0.	0.	0.	0.	0.	0.
	(ii)	501,594.	332,494.	35,369.	11,200.	17,699.	898,356.	0.
(2) DANIEL HUTSON CHIEF STRATEGY OFFICER (UNTIL 3/19)	(i)	0.	0.	0.	0.	0.	0.	0.
	(ii)	69,636.	115,508.	352,234.	9,261.	5,490.	552,129.	0.
(3) DANIEL OGUS CHIEF OPERATING OFFICER	(i)	0.	0.	0.	0.	0.	0.	0.
	(ii)	391,271.	218,412.	29,777.	11,200.	21,188.	671,848.	0.
(4) PAMELA S. CLAASSEN CFO TO 12/19; CH CAP STRATEG 1/20	(i)	0.	0.	0.	0.	0.	0.	0.
	(ii)	471,362.	151,206.	21,818.	11,200.	17,549.	673,135.	0.
(5) S. LOUISE RANKIN GENERAL COUNSEL (RETD. 05/19)	(i)	0.	0.	0.	0.	0.	0.	0.
	(ii)	188,240.	132,305.	54,451.	9,444.	13,100.	397,540.	0.
(6) BETHANY GHASSEMI ASSOC GC TO 5/19; GEN COUNSEL 6/19	(i)	0.	0.	0.	0.	0.	0.	0.
	(ii)	185,891.	0.	0.	7,732.	0.	193,623.	0.
(7) FLEMING MENG CHIEF INFORMATION OFFICER	(i)	0.	0.	0.	0.	0.	0.	0.
	(ii)	300,962.	68,004.	0.	5,077.	20,808.	394,851.	0.
(8) TARA MCGUINESS VP REGIONAL OPERATIONS	(i)	0.	0.	0.	0.	0.	0.	0.
	(ii)	207,612.	71,543.	0.	11,200.	18,630.	308,985.	0.
(9) DENNIS GRADILLAS VP SALES	(i)	0.	0.	0.	0.	0.	0.	0.
	(ii)	205,624.	84,676.	2,807.	11,200.	20,313.	324,620.	0.
(10) GREGORY BEARCE VP REGIONAL OPERATIONS	(i)	0.	0.	0.	0.	0.	0.	0.
	(ii)	180,577.	63,000.	16,413.	10,158.	15,738.	285,886.	0.
(11) TYLER ICHIEN VP REGIONAL OPERATIONS	(i)	0.	0.	0.	0.	0.	0.	0.
	(ii)	175,561.	74,250.	27,001.	8,702.	20,210.	305,724.	0.
(12) LISA HOLLAND VP REGIONAL OPERATIONS	(i)	0.	0.	0.	0.	0.	0.	0.
	(ii)	168,306.	44,450.	0.	8,600.	15,797.	237,153.	0.
(13) MARC HERRERA VP HEALTHCARE & QUALITY	(i)	0.	0.	0.	0.	0.	0.	0.
	(ii)	202,257.	54,998.	0.	10,494.	16,538.	284,287.	0.
(14) JAIME ROBERTS EXECUTIVE DIRECTOR	(i)	134,898.	10,229.	0.	1,306.	6,357.	152,790.	0.
	(ii)	0.	0.	0.	0.	0.	0.	0.
	(i)							
	(ii)							
	(i)							
	(ii)							

Part III Supplemental Information

Provide the information, explanation, or descriptions required for Part I, lines 1a, 1b, 3, 4a, 4b, 4c, 5a, 5b, 6a, 6b, 7, and 8, and for Part II. Also complete this part for any additional information.

PART I, LINE 3:

COMPENSATION OF THE CEO IS DETERMINED BY HUMANGOOD USING THE FOLLOWING METHODS: COMPENSATION COMMITTEE, COMPENSATION CONSULTANT, FORM 990 OF OTHER ORGANIZATIONS, COMPENSATION SURVEY/STUDY AND APPROVAL BY THE BOARD/COMPENSATION COMMITTEE.

PART I, LINE 4A:

THE CHIEF STRATEGY OFFICER RECEIVED SEVERANCE PAYMENT DURING THE CALENDAR YEAR 2019.

PART II - ADDITIONAL INFORMATION:

THE EXECUTIVE DIRECTORS (EDS) OF HUMANGOOD NORCAL MANAGED COMMUNITIES ARE EMPLOYEES OF HUMANGOOD NORCAL AND THEIR COMPENSATION IS FULLY REIMBURSED TO HUMANGOOD NORCAL FROM THEIR COMMUNITY. THE EDS DO NOT QUALIFY UNDER THE DEFINITIONS AS A "KEY EMPLOYEE" FOR HUMANGOOD NORCAL. SINCE THE ED ROLE IS SO SIGNIFICANT IN THE COMMUNITY AND THE COMPENSATION IS FULLY REIMBURSED, FOR PURPOSES OF FORM 990 REPORTING, EDS ARE REFLECTED AS HIGHLY COMPENSATED EMPLOYEES IN THE SECTION VII

Part III Supplemental Information

Provide the information, explanation, or descriptions required for Part I, lines 1a, 1b, 3, 4a, 4b, 4c, 5a, 5b, 6a, 6b, 7, and 8, and for Part II. Also complete this part for any additional information.

AND IN SCHEDULE J IN PART II ON LINE (I) AS THEIR COMPENSATION IS PAID
BY THE ORGANIZATION AND THE ED'S SALARY IS INCLUDED IN SALARIES AND
BENEFITS IN THE FINANCIAL STATEMENT PRESENTATION.

Supplemental Information on Tax-Exempt Bonds

▶ **Complete if the organization answered "Yes" on Form 990, Part IV, line 24a. Provide descriptions, explanations, and any additional information in Part VI.**
▶ **Attach to Form 990.** ▶ **Go to www.irs.gov/Form990 for instructions and the latest information.**

Name of the organization **HUMANGOOD ARIZONA, INC.** Employer identification number **86-0176446**

Part I Bond Issues											
(a) Issuer name	(b) Issuer EIN	(c) CUSIP #	(d) Date issued	(e) Issue price	(f) Description of purpose	(g) Defeased		(h) On behalf of issuer		(i) Pooled financing	
						Yes	No	Yes	No	Yes	No
A THE INDUSTRIAL DEVELOPMENT AUTHORITY OF	52-1767454	378286JT6	05/24/18	36246378.	SEE PART VI		X		X		X
B											
C											
D											

Part II Proceeds										
	A		B		C		D			
1 Amount of bonds retired	820,000.									
2 Amount of bonds legally defeased										
3 Total proceeds of issue	36,246,378.									
4 Gross proceeds in reserve funds	1,238,126.									
5 Capitalized interest from proceeds										
6 Proceeds in refunding escrows										
7 Issuance costs from proceeds	1,528.									
8 Credit enhancement from proceeds										
9 Working capital expenditures from proceeds										
10 Capital expenditures from proceeds										
11 Other spent proceeds	35,011,000.									
12 Other unspent proceeds										
13 Year of substantial completion	2018									
	Yes	No	Yes	No	Yes	No	Yes	No		
14 Were the bonds issued as part of a refunding issue of tax-exempt bonds (or, if issued prior to 2018, a current refunding issue)?	X									
15 Were the bonds issued as part of a refunding issue of taxable bonds (or, if issued prior to 2018, an advance refunding issue)?		X								
16 Has the final allocation of proceeds been made?	X									
17 Does the organization maintain adequate books and records to support the final allocation of proceeds?	X									

Part III Private Business Use								
	A		B		C		D	
	Yes	No	Yes	No	Yes	No	Yes	No
1 Was the organization a partner in a partnership, or a member of an LLC, which owned property financed by tax-exempt bonds?		X						
2 Are there any lease arrangements that may result in private business use of bond-financed property?		X						
3a Are there any management or service contracts that may result in private business use of bond-financed property?		X						
b If "Yes" to line 3a, does the organization routinely engage bond counsel or other outside counsel to review any management or service contracts relating to the financed property?								
c Are there any research agreements that may result in private business use of bond-financed property?		X						
d If "Yes" to line 3c, does the organization routinely engage bond counsel or other outside counsel to review any research agreements relating to the financed property?								
4 Enter the percentage of financed property used in a private business use by entities other than a section 501(c)(3) organization or a state or local government00	%			%		%
5 Enter the percentage of financed property used in a private business use as a result of unrelated trade or business activity carried on by your organization, another section 501(c)(3) organization, or a state or local government00	%			%		%
6 Total of lines 4 and 500	%			%		%
7 Does the bond issue meet the private security or payment test?		X						
8a Has there been a sale or disposition of any of the bond-financed property to a non-governmental person other than a 501(c)(3) organization since the bonds were issued?		X						
b If "Yes" to line 8a, enter the percentage of bond-financed property sold or disposed of			%			%		%
c If "Yes" to line 8a, was any remedial action taken pursuant to Regulations sections 1.141-12 and 1.145-2?								
9 Has the organization established written procedures to ensure that all nonqualified bonds of the issue are remediated in accordance with the requirements under Regulations sections 1.141-12 and 1.145-2?		X						

Part IV Arbitrage								
	A		B		C		D	
	Yes	No	Yes	No	Yes	No	Yes	No
1 Has the issuer filed Form 8038-T, Arbitrage Rebate, Yield Reduction and Penalty in Lieu of Arbitrage Rebate?		X						
2 If "No" to line 1, did the following apply?								
a Rebate not due yet?		X						
b Exception to rebate?	X							
c No rebate due?		X						
If "Yes" to line 2c, provide in Part VI the date the rebate computation was performed								
3 Is the bond issue a variable rate issue?		X						

	A		B		C		D	
	Yes	No	Yes	No	Yes	No	Yes	No
4a Has the organization or the governmental issuer entered into a qualified hedge with respect to the bond issue?		X						
b Name of provider								
c Term of hedge								
d Was the hedge superintegrated?								
e Was the hedge terminated?								
5a Were gross proceeds invested in a guaranteed investment contract (GIC)?		X						
b Name of provider								
c Term of GIC								
d Was the regulatory safe harbor for establishing the fair market value of the GIC satisfied?								
6 Were any gross proceeds invested beyond an available temporary period?		X						
7 Has the organization established written procedures to monitor the requirements of section 148?	X							

	A		B		C		D	
	Yes	No	Yes	No	Yes	No	Yes	No
Has the organization established written procedures to ensure that violations of federal tax requirements are timely identified and corrected through the voluntary closing agreement program if self-remediation isn't available under applicable regulations?	X							

Part VI Supplemental Information. Provide additional information for responses to questions on Schedule K. See instructions

PART I, BOND ISSUES:

(A) ISSUER NAME: THE INDUSTRIAL DEVELOPMENT AUTHORITY OF THE CITY OF GLENDALE

(B) DESCRIPTION OF PURPOSE: REFUND PRIOR ISSUE DATED 12/15/2015

SCHEDULE O
(Form 990 or 990-EZ)

Department of the Treasury
Internal Revenue Service

Supplemental Information to Form 990 or 990-EZ

Complete to provide information for responses to specific questions on
Form 990 or 990-EZ or to provide any additional information.

▶ Attach to Form 990 or 990-EZ.

▶ Go to www.irs.gov/Form990 for the latest information.

OMB No. 1545-0047

2019

Open to Public
Inspection

Name of the organization

HUMANGOOD ARIZONA, INC.

Employer identification number

86-0176446

FORM 990, PART VI, SECTION A, LINE 3:

HUMANGOOD NORCAL, A RELATED 501(C)(3) ORGANIZATION, PROVIDES MANAGEMENT SERVICES TO HUMANGOOD ARIZONA, INC. PURSUANT A MULTIYEAR MANAGEMENT AGREEMENT.

FORM 990, PART VI, SECTION A, LINE 6:

HUMANGOOD CORNERSTONE, A CALIFORNIA NONPROFIT PUBLIC BENEFIT CORPORATION EXEMPT UNDER IRC SECTION 501(C)(3), IS THE SOLE MEMBER OF HUMANGOOD ARIZONA, INC. HUMANGOOD, A CALIFORNIA NONPROFIT PUBLIC BENEFIT CORPORATION EXEMPT UNDER IRC SECTION 501(C)(3), IS THE SOLE MEMBER OF HUMANGOOD CORNERSTONE.

FORM 990, PART VI, SECTION A, LINE 7A:

HUMANGOOD CORNERSTONE AS THE SOLE MEMBER OF HUMANGOOD ARIZONA, INC. ELECTS THE BOARD OF DIRECTORS OF THE ORGANIZATION.

FORM 990, PART VI, SECTION A, LINE 7B:

THE FOLLOWING TRANSACTIONS REQUIRE APPROVAL BY THE MEMBERS:

- A) MERGER, CONSOLIDATION OR DISSOLUTION OF THE CORPORATION;
- B) AMENDMENT, REPEAL, OR RESTATEMENT OF THE ARTICLES OF INCORPORATION OR BYLAWS;
- C) AGGREGATE BORROWING FOR ANY PURPOSE IN EXCESS OF \$50,000;
- D) PURCHASE, SALE, LEASE, DISPOSITION, HYPOTHECATION, EXCHANGE, GIFT, PLEDGE, ENCUMBERANCE OR MORTGAGE OF ANY REAL PROPERTY, AND OF ANY PERSONAL PROPERTY WITH A VALUE IN EXCESS OF \$50,000;

Name of the organization

HUMANGOOD ARIZONA, INC.

Employer identification number

86-0176446

E) APPOINTMENT OF THE INDEPENDENT AUDITOR;

F) TRANSACTIONS OUTSIDE THE ORDINARY COURSE OF BUSINESS.

FORM 990, PART VI, SECTION B, LINE 11B:

THE FORM 990 IS REVIEWED BY THE CFO AND FURNISHED TO THE BOARD OF DIRECTORS PRIOR TO FILING WITH THE IRS.

FORM 990, PART VI, SECTION B, LINE 12C:

EVERY YEAR, THE ORGANIZATION'S DIRECTORS AND OFFICERS ARE ASKED TO COMPLETE A CONFLICT OF INTEREST DISCLOSURE ALONG WITH A STATEMENT OF COMMITMENT.

IN CONNECTION WITH ANY ACTUAL OR POSSIBLE CONFLICT OF INTEREST, DIRECTORS AND OFFICERS MUST DISCLOSE THE EXISTENCE OF THE FINANCIAL INTEREST AND BE GIVEN THE OPPORTUNITY TO DISCLOSE ALL MATERIAL FACTS TO THE DIRECTORS AND MEMBERS OF COMMITTEES.

AFTER DISCLOSURE OF THE FINANCIAL INTEREST AND ALL MATERIAL FACTS, AND AFTER ANY DISCUSSION WITH THE INTERESTED PERSON, HE/SHE SHALL LEAVE THE BOARD OR COMMITTEE MEETING WHILE THE DETERMINATION OF A CONFLICT OF INTEREST IS DISCUSSED AND VOTED UPON.

IF THE BOARD OR COMMITTEE HAS REASONABLE CAUSE TO BELIEVE A MEMBER HAS FAILED TO DISCLOSE ACTUAL OR POSSIBLE CONFLICTS OF INTEREST, IT SHALL INFORM THE MEMBER OF THE BASIS FOR SUCH BELIEF AND AFFORD THE MEMBER AN OPPORTUNITY TO EXPLAIN THE ALLEGED FAILURE TO DISCLOSE.

IF, AFTER HEARING THE RESPONSE OF THE MEMBER, THE BOARD OR COMMITTEE DETERMINES THAT THE MEMBER HAS IN FACT FAILED TO DISCLOSE AN ACTUAL OR

Name of the organization

HUMANGOOD ARIZONA, INC.

Employer identification number

86-0176446

POSSIBLE CONFLICT OF INTEREST, IT SHALL TAKE APPROPRIATE DISCIPLINARY AND CORRECTIVE ACTION.

FORM 990, PART VI, SECTION B, LINE 15:

COMPENSATION OF THE PRESIDENT AND CFO OF HUMANGOOD (SOURCE OF "RELATED ORGANIZATION" COMPENSATION IN PART VII) IS REVIEWED ANUALLY FOR MARKET COMPETITIVENESS AND INTERMEDIATE SANCTIONS COMPLIANCE BY A COMPENSATION COMMITTEE OF THE HUMANGOOD BOARD. COMPENSATION OF OTHER OFFICERS AND KEY EMPLOYEES IS REVIEWED BY THE CEO WITH DISCLOSURE TO THE COMPENSATION COMMITTEE. THE HUMANGOOD BOARD MEMBERS AND PRESIDENT ARE INDEPENDENT WITH RESPECT TO THE INDIVIDUALS WHOSE COMPENSATION IS BEING REVIEWED. THE HUMANGOOD BOARD AND PRESIDENT RELY UPON WAGE AND SALARY STUDIES AND/OR REGULAR REVIEW BY A COMPENSATION CONSULTANT TO PROVIDE COMPARABLE SALARY DATA FOR THEIR CONSIDERATION. DECISIONS REGARDING COMPENSATION ARE DOCUMENTED ON A CONTEMPORANEOUS BASIS.

THE COMPENSATION OF THE EXECUTIVE DIRECTOR FOR HUMANGOOD ARIZONA, INC. IS DETERMINED BY WAGE AND SALARY STUDIES CONDUCTED ANNUALLY BY HUMANGOOD'S HUMAN RESOURCE DEPARTMENT AND REVIEWED BY HUMANGOOD'S CHIEF OPERATIONS OFFICER AND HUMANGOOD'S CEO.

THE EXECUTIVE DIRECTORS (EDS) OF HUMANGOOD NORCAL MANAGED COMMUNITIES ARE EMPLOYEES OF HUMANGOOD NORCAL AND THEIR COMPENSATION IS FULLY REIMBURSED TO HUMANGOOD NORCAL FROM THEIR COMMUNITY. THE EDS DO NOT QUALIFY UNDER THE DEFINITIONS AS A "KEY EMPLOYEE" FOR HUMANGOOD NORCAL. SINCE THE ED ROLE IS SO SIGNIFICANT IN THE COMMUNITY AND THE COMPENSATION IS FULLY REIMBURSED FOR PURPOSES OF FORM 990 REPORTING, EDS ARE REFLECTED IN SECTION VII AS "HIGHLY COMPENSATED" EMPLOYEES SCHEDULE J IN PART II ON LINE (I) AS THEIR

Name of the organization

HUMANGOOD ARIZONA, INC.

Employer identification number

86-0176446

COMPENSATION IS PAID BY THE ORGANIZATION AND THE ED'S SALARY IS INCLUDED IN SALARIES AND BENEFITS IN THE FINANCIAL STATEMENT PRESENTATION.

FORM 990, PART VI, SECTION C, LINE 19:

THE GOVERNING DOCUMENTS AND FINANCIAL STATEMENTS ARE AVAILABLE FOR INSPECTION UPON REQUEST.

FORM 990, PART VII, SECTION A:

CERTAIN BOARD MEMBERS RECEIVED A STIPEND FOR 2019 FOR THEIR BOARD AND COMMITTEE WORK RELATED TO HUMANGOOD. NO COMPENSATION IS PAID TO ANY BOARD MEMBERS FOR THEIR ROLE ON THE HUMANGOOD ARIZONA BOARD.

BOARD STIPENDS:

COMMENCING TWO YEARS AFTER THE MAY 1, 2016 AFFILIATION OF HUMANGOOD NORCAL AND HUMANGOOD SOCIAL, THE SEVEN-MEMBER HUMANGOOD BOARD BEGAN RECEIVING GENERAL AND MEETING SPECIFIC STIPENDS FOR THEIR SERVICE TO THE TOP GOVERNING ORGANIZATION, HUMANGOOD. AN EVALUATION WAS PERFORMED OF SIMILARLY COMPLEX NON-PROFIT ORGANIZATIONS TO DETERMINE THE REASONABLENESS OF THE STIPEND AMOUNT FOR THE HOURS COMMITTED TO GOVERNANCE. NO REMUNERATION IS ATTRIBUTABLE TO SERVICE BY THESE SEVEN BOARD MEMBERS ON BOARDS OF OTHER HUMANGOOD AFFILIATES. THE REMUNERATION IS TAXABLE TO EACH OF THE MEMBERS AND REPORTED ANNUALLY ON FORM 1099 IN ADDITION TO DISCLOSURE IN THE FORM 990. BASED ON RECEIVING THIS REMUNERATION AND THE ADVICE OF TAX CONSULTANTS, THESE BOARD MEMBERS ARE NOT REFLECTED AS BEING INDEPENDENT DIRECTORS.

INCENTIVE COMPENSATION:

EXECUTIVE DIRECTORS, REGIONAL MANAGERS AND SENIOR MANAGEMENT ARE

Name of the organization HUMANGOOD ARIZONA, INC.	Employer identification number 86-0176446
---	--

ELIGIBLE FOR INCENTIVE COMPENSATION. IN ADVANCE OF THE CALENDAR YEAR TO WHICH INCENTIVE COMPENSATION APPLIES, GOALS ARE SET FOR EACH INDIVIDUAL THAT ALIGN WITH THE STRATEGIC AND OPERATIONAL OBJECTIVES OF THE ORGANIZATION. THE GOALS OF THE CEO AND EXECUTIVE TEAM ARE REVIEWED BY THE BOARD COMPENSATION COMMITTEE. BEFORE ANY PAYMENT IS EARNED, THE INCENTIVE POOL MUST BE FUNDED, AND IS SUBJECT TO A CAP, FROM EXCEEDING BUDGETED NET CASH PRODUCTION ARISING FROM THE SUM OF OPERATIONAL PERFORMANCE AND NET TURNOVER ENTRANCE FEES. THE ATTAINMENT OF EACH INCENTIVE GOAL IS ASSESSED BY EACH TEAM MEMBER'S SUPERVISOR AND ULTIMATELY REVIEWED BY THE CEO PRIOR TO AWARD. IF THE INCENTIVE POOL IS PARTIALLY FUNDED, THE PARTIAL PERCENTAGE IS APPLIED TO THE POTENTIAL AWARD FOR EACH MEMBER'S ATTAINED GOALS.

FORM 990, PART XI, LINE 9, CHANGES IN NET ASSETS:

CHANGE IN INTEREST RATE SWAP AGREEMENTS	-156,272.
---	-----------

**SCHEDULE R
(Form 990)**

Department of the Treasury
Internal Revenue Service

Related Organizations and Unrelated Partnerships

▶ Complete if the organization answered "Yes" on Form 990, Part IV, line 33, 34, 35b, 36, or 37.

▶ Attach to Form 990.

▶ Go to www.irs.gov/Form990 for instructions and the latest information.

OMB No. 1545-0047

2019

Open to Public Inspection

Name of the organization

HUMANGOOD ARIZONA, INC.

Employer identification number

86-0176446

Part I Identification of Disregarded Entities. Complete if the organization answered "Yes" on Form 990, Part IV, line 33.

(a) Name, address, and EIN (if applicable) of disregarded entity	(b) Primary activity	(c) Legal domicile (state or foreign country)	(d) Total income	(e) End-of-year assets	(f) Direct controlling entity

Part II Identification of Related Tax-Exempt Organizations. Complete if the organization answered "Yes" on Form 990, Part IV, line 34, because it had one or more related tax-exempt organizations during the tax year.

(a) Name, address, and EIN of related organization	(b) Primary activity	(c) Legal domicile (state or foreign country)	(d) Exempt Code section	(e) Public charity status (if section 501(c)(3))	(f) Direct controlling entity	(g) Section 512(b)(13) controlled entity?	
						Yes	No
HUMANGOOD NEVADA DBA LAS VENTANAS RETIREMENT COMMUNITY - 20-0566413, 6120 STONERIDGE MALL ROAD SUITE 100, PLEASANTON, CA 94588	LIFE PLAN COMMUNITY	CALIFORNIA	501(C)(3)	LINE 10	HUMANGOOD CORNERSTONE		X
HUMANGOOD IDAHO DBA TERRACES OF BOISE - 20-3659420, 6120 STONERIDGE MALL ROAD SUITE 100, PLEASANTON, CA 94588	LIFE PLAN COMMUNITY	CALIFORNIA	501(C)(3)	LINE 10	HUMANGOOD CORNERSTONE		X
HUMANGOOD FOUNDATION WEST - 23-7039408 6120 STONERIDGE MALL ROAD SUITE 100 PLEASANTON, CA 94588	SUPPORT FOR NON-PROFIT RESIDENTIAL COMMUNITIES	CALIFORNIA	501(C)(3)	LINE 12A, I	HUMANGOOD NORCAL		X
HUMANGOOD FRESNO DBA THE TERRACES AT SAN JOAQUIN GARDENS - 26-0650298, 6120 STONERIDGE MALL ROAD SUITE 100, PLEASANTON,	LIFE PLAN COMMUNITY	CALIFORNIA	501(C)(3)	LINE 10	HUMANGOOD		X

For Paperwork Reduction Act Notice, see the Instructions for Form 990.

Schedule R (Form 990) 2019

SEE PART VII FOR CONTINUATIONS

Part II Continuation of Identification of Related Tax-Exempt Organizations

(a) Name, address, and EIN of related organization	(b) Primary activity	(c) Legal domicile (state or foreign country)	(d) Exempt Code section	(e) Public charity status (if section 501(c)(3))	(f) Direct controlling entity	(g) Section 512(b)(13) controlled organization?	
						Yes	No
GOOD SHEPHERD SENIOR HOUSING - 26-2704795 6120 STONERIDGE MALL ROAD SUITE 100 PLEASANTON, CA 94588	AFFORDABLE HOUSING	WASHINGTON	501(C)(3)	LINE 10	HUMANGOOD AFFORDABLE HOUSING		X
HUMANGOOD CORNERSTONE - 30-0184304 6120 STONERIDGE MALL ROAD SUITE 100 PLEASANTON, CA 94588	PARENT ORGANIZATION	CALIFORNIA	501(C)(3)	LINE 12B, II	HUMANGOOD		X
REDLANDS SENIOR HOUSING TWO - 31-1539936 6120 STONERIDGE MALL ROAD SUITE 100 PLEASANTON, CA 94588	AFFORDABLE HOUSING	CALIFORNIA	501(C)(3)	LINE 10	HUMANGOOD AFFORDABLE HOUSING		X
HUMANGOOD - 31-1558961 6120 STONERIDGE MALL ROAD SUITE 100 PLEASANTON, CA 94588	PARENT ORGANIZATION	CALIFORNIA	501(C)(3)	LINE 12A, I	N/A		X
BAY VISTA SENIOR HOUSING - 46-0777494 6120 STONERIDGE MALL ROAD SUITE 100 PLEASANTON, CA 94588	AFFORDABLE HOUSING	WASHINGTON	501(C)(3)	LINE 10	HUMANGOOD AFFORDABLE HOUSING		X
HILLCREST SENIOR HOUSING CORP - 76-0801395 6120 STONERIDGE MALL ROAD SUITE 100 PLEASANTON, CA 94588	AFFORDABLE HOUSING	CALIFORNIA	501(C)(3)	LINE 10	HUMANGOOD AFFORDABLE HOUSING		X
JUDSON TERRACE LODGE - 77-0389124 6120 STONERIDGE MALL ROAD SUITE 100 PLEASANTON, CA 94588	AFFORDABLE HOUSING	CALIFORNIA	501(C)(3)	LINE 10	HUMANGOOD AFFORDABLE HOUSING		X
SALISHAN SENIOR HOUSING, INC. - 90-0504991 6120 STONERIDGE MALL ROAD SUITE 100 PLEASANTON, CA 94588	AFFORDABLE HOUSING	WASHINGTON	501(C)(3)	LINE 10	HUMANGOOD AFFORDABLE HOUSING		X
HUMANGOOD WASHINGTON DBA JUDSON PARK RETIREMENT COMMUNITY - 91-1659735, 6120 STONERIDGE MALL ROAD SUITE 100, PLEASANTON,	LIFE PLAN COMMUNITY	WASHINGTON	501(C)(3)	LINE 10	HUMANGOOD CORNERSTONE		X
HUMANGOOD FOUNDATION SOUTH - 91-1931309 516 BURCHETT STREET GLENDALE, CA 91203	FUNDRAISING, FINANCIAL RESOURCES TO RELATED ENTITIES	CALIFORNIA	501(C)(3)	LINE 7	HUMANGOOD SOCIAL		X
SAN LEANDRO SENIOR HOUSING INC - 91-2158413 6120 STONERIDGE MALL ROAD SUITE 100 PLEASANTON, CA 94588	AFFORDABLE HOUSING	CALIFORNIA	501(C)(3)	LINE 10	HUMANGOOD AFFORDABLE HOUSING		X
HARBORVIEW PROPERTIES, INC. - 91-6086253 6120 STONERIDGE MALL ROAD SUITE 100 PLEASANTON, CA 94588	AFFORDABLE HOUSING	WASHINGTON	501(C)(3)	LINE 10	HUMANGOOD AFFORDABLE HOUSING		X

Part II Continuation of Identification of Related Tax-Exempt Organizations

(a) Name, address, and EIN of related organization	(b) Primary activity	(c) Legal domicile (state or foreign country)	(d) Exempt Code section	(e) Public charity status (if section 501(c)(3))	(f) Direct controlling entity	(g) Section 512(b)(13) controlled organization?	
						Yes	No
REDLANDS SENIOR HOUSING, INC. - 94-2902763 6120 STONERIDGE MALL ROAD SUITE 100 PLEASANTON, CA 94588	AFFORDABLE HOUSING	CALIFORNIA	501(C)(3)	LINE 10	HUMANGOOD AFFORDABLE HOUSING		X
HUMANGOOD AFFORDABLE HOUSING - 94-3085296 6120 STONERIDGE MALL ROAD SUITE 100 PLEASANTON, CA 94588	AFFORDABLE HOUSING	CALIFORNIA	501(C)(3)	LINE 10	HUMANGOOD CORNERSTONE		X
TAHOE SENIOR PLAZA INC - 94-3292737 6120 STONERIDGE MALL ROAD SUITE 100 PLEASANTON, CA 94588	AFFORDABLE HOUSING	CALIFORNIA	501(C)(3)	LINE 10	HUMANGOOD AFFORDABLE HOUSING		X
HUMANGOOD SOCIAL - 95-1894293 516 BURCHETT STREET GLENDALE, CA 91203	LIFE PLAN COMMUNITIES	CALIFORNIA	501(C)(3)	LINE 10	HUMANGOOD		X
OAK KNOLLS HAVEN CORPORATION - 95-3497055 6120 STONERIDGE MALL ROAD SUITE 100 PLEASANTON, CA 94588	AFFORDABLE HOUSING	CALIFORNIA	501(C)(3)	LINE 10	HUMANGOOD AFFORDABLE HOUSING		X
MANTUA PRESBYTERIAN APARTMENTS, INC. - 20-5006775, 2000 JOSHUA ROAD, LAFAYETTE HILL, PA 19444	LOW INCOME HOUSING FOR SENIOR CITIZENS AND HANDICAPPED	PENNSYLVANIA	501(C)(3)	LINE 10	PHILADELPHIA PRESBYTERY HOMES AND SERVICES FOR		X
PASCHALL SENIOR HOUSING, INC. - 20-5957419 2000 JOSHUA ROAD LAFAYETTE HILL, PA 19444	LOW INCOME HOUSING FOR SENIOR CITIZENS AND HANDICAPPED	PENNSYLVANIA	501(C)(3)	LINE 10	PHILADELPHIA PRESBYTERY HOMES AND SERVICES FOR		X
MAKEMIE AT WHITELAND - 20-8523793 2000 JOSHUA ROAD LAFAYETTE HILL, PA 19444	INACTIVE	PENNSYLVANIA	501(C)(3)	LINE 10	PHILADELPHIA PRESBYTERY HOMES AND SERVICES FOR		X
PHILADELPHIA PRESBYTERY APARTMENTS OF MORRISVILLE, INC. - 22-2466663, 2000 JOSHUA ROAD, LAFAYETTE HILL, PA 19444	LOW INCOME HOUSING FOR SENIOR CITIZENS AND HANDICAPPED	PENNSYLVANIA	501(C)(3)	LINE 10	PHILADELPHIA PRESBYTERY HOMES AND SERVICES FOR		X
PRESBYTERIAN HOME AT 58TH STREET - 23-1352513, 2000 JOSHUA ROAD, LAFAYETTE HILL, PA 19444	SUPPORT TO AFFILIATES	PENNSYLVANIA	501(C)(3)	LINE 12B, II	PHILADELPHIA PRESBYTERY HOMES AND SERVICES FOR		X
HUMANGOOD PENNSYLVANIA FKA PHILADELPHIA PRESBYTERY HOMES, INC. - 23-1547587, 2000 JOSHUA ROAD, LAFAYETTE HILL, PA 19444	PROVIDE SENIOR LIVING OPTIONS, FUNDRAISING & SUPPORT	PENNSYLVANIA	501(C)(3)	LINE 10	PHILADELPHIA PRESBYTERY HOMES AND SERVICES FOR		X
PHILADELPHIA PRESBYTERY APARTMENTS, INC. - 23-2081651, 2000 JOSHUA ROAD, LAFAYETTE HILL, PA 19444	LOW INCOME HOUSING FOR SENIOR CITIZENS AND HANDICAPPED	PENNSYLVANIA	501(C)(3)	LINE 10	PHILADELPHIA PRESBYTERY HOMES AND SERVICES FOR		X

Part II Continuation of Identification of Related Tax-Exempt Organizations

(a) Name, address, and EIN of related organization	(b) Primary activity	(c) Legal domicile (state or foreign country)	(d) Exempt Code section	(e) Public charity status (if section 501(c)(3))	(f) Direct controlling entity	(g) Section 512(b)(13) controlled organization?	
						Yes	No
GERMANTOWN INTERFAITH HOUSING, INC. - 23-2211053, 2000 JOSHUA ROAD, LAFAYETTE HILL, PA 19444	LOW INCOME HOUSING FOR SENIOR CITIZENS AND HANDICAPPED	PENNSYLVANIA	501(C)(3)	LINE 10	PHILADELPHIA PRESBYTERY HOMES AND SERVICES FOR		X
GRACE COURT, INC. - 23-2299928 2000 JOSHUA ROAD LAFAYETTE HILL, PA 19444	LOW INCOME HOUSING FOR SENIOR CITIZENS AND HANDICAPPED	PENNSYLVANIA	501(C)(3)	LINE 10	PHILADELPHIA PRESBYTERY HOMES AND SERVICES FOR		X
PRESBYTERIAN APARTMENTS AT 58TH STREET, INC. - 23-2605582, 2000 JOSHUA ROAD, LAFAYETTE HILL, PA 19444	LOW INCOME HOUSING FOR SENIOR CITIZENS AND HANDICAPPED	PENNSYLVANIA	501(C)(3)	LINE 10	PHILADELPHIA PRESBYTERY HOMES AND SERVICES FOR		X
SOUTHWEST PHILADELPHIA PRESBYTERY APARTMENTS, INC. - 23-2700459, 2000 JOSHUA ROAD, LAFAYETTE HILL, PA 19444	LOW INCOME HOUSING FOR SENIOR CITIZENS AND HANDICAPPED	PENNSYLVANIA	501(C)(3)	LINE 10	PHILADELPHIA PRESBYTERY HOMES AND SERVICES FOR		X
TIOGA PRESBYTERIAN APARTMENTS, INC. - 23-2763902, 2000 JOSHUA ROAD, LAFAYETTE HILL, PA 19444	LOW INCOME HOUSING FOR SENIOR CITIZENS AND HANDICAPPED	PENNSYLVANIA	501(C)(3)	LINE 10	PHILADELPHIA PRESBYTERY HOMES AND SERVICES FOR		X
OLD CITY PRESBYTERIAN APARTMENTS, INC. - 23-2778769, 2000 JOSHUA ROAD, LAFAYETTE HILL, PA 19444	LOW INCOME HOUSING FOR SENIOR CITIZENS AND HANDICAPPED	PENNSYLVANIA	501(C)(3)	LINE 10	PHILADELPHIA PRESBYTERY HOMES AND SERVICES FOR		X
HUMANGOOD EAST FKA PHILADELPHIA PRESBYTERY HOMES AND SERVICES FOR THE AGING , 2000 JOSHUA ROAD, LAFAYETTE HILL, PA 19444	PARENT ENTITY	PENNSYLVANIA	501(C)(3)	LINE 12B, II	N/A		X
BALA PRESBYTERIAN HOME FOUNDATION - 23-2834398, 2000 JOSHUA ROAD, LAFAYETTE HILL, PA 19444	FUNDRAISING & SUPPORT	PENNSYLVANIA	501(C)(3)	LINE 12B, II	PHILADELPHIA PRESBYTERY HOMES AND SERVICES FOR		X
PRESBYSERVICES - 23-3000326 2000 JOSHUA ROAD LAFAYETTE HILL, PA 19444	MASTER PAYROLL COMPANY	PENNSYLVANIA	501(C)(3)	LINE 12B, II	PHILADELPHIA PRESBYTERY HOMES AND SERVICES FOR		X
AVENUE OF THE ARTS PRESBYTERIAN-PSC APARTMENTS, INC. - 23-3027613, 2000 JOSHUA ROAD, LAFAYETTE HILL, PA 19444	LOW INCOME HOUSING FOR SENIOR CITIZENS AND HANDICAPPED	PENNSYLVANIA	501(C)(3)	LINE 10	PHILADELPHIA PRESBYTERY HOMES AND SERVICES FOR		X
SOUTHWEST PHILADELPHIA NEIGHBORHOOD RENEWAL PROGRAM - 23-3066741, 2000 JOSHUA ROAD, LAFAYETTE HILL, PA 19444	INACTIVE	PENNSYLVANIA	501(C)(3)	PF	PHILADELPHIA PRESBYTERY HOMES AND SERVICES FOR		X
PHILADELPHIA PRESBYTERY HOMES WC TRUST - 23-7816031, 2000 JOSHUA ROAD, LAFAYETTE HILL, PA 19444	INACTIVE	PENNSYLVANIA	501(C)(3)	LINE 10	PHILADELPHIA PRESBYTERY HOMES AND SERVICES FOR		X

Part II Continuation of Identification of Related Tax-Exempt Organizations

(a) Name, address, and EIN of related organization	(b) Primary activity	(c) Legal domicile (state or foreign country)	(d) Exempt Code section	(e) Public charity status (if section 501(c)(3))	(f) Direct controlling entity	(g) Section 512(b)(13) controlled organization?	
						Yes	No
SOUTH PHILADELPHIA PRESBYTERIAN APARTMENTS, INC. - 46-0477271, 2000 JOSHUA ROAD, LAFAYETTE HILL, PA 19444	LOW INCOME HOUSING FOR SENIOR CITIZENS AND HANDICAPPED	PENNSYLVANIA	501(C)(3)	LINE 10	PHILADELPHIA PRESBYTERY HOMES AND SERVICES FOR		X
GREENWAY PRESBYTERIAN APARTMENTS, INC. - 86-1063722, 2000 JOSHUA ROAD, LAFAYETTE HILL, PA 19444	LOW INCOME HOUSING FOR SENIOR CITIZENS AND HANDICAPPED	PENNSYLVANIA	501(C)(3)	LINE 10	PHILADELPHIA PRESBYTERY HOMES AND SERVICES FOR		X
ROSE VIEW TERRACE, INC. - 26-4333422 516 BURCHETT STREET GLENDALE, CA 91203	AFFORDABLE HOUSING	CALIFORNIA	501(C)(3)	LINE 7	HUMANGOOD AFFORDABLE HOUSING		X
SENIOR AFFORDABLE HOUSING CORP #3 DBA: HADLEY VILLAS - 30-0032287, 516 BURCHETT STREET, GLENDALE, CA 91203	AFFORDABLE HOUSING	CALIFORNIA	501(C)(3)	LINE 7	HUMANGOOD AFFORDABLE HOUSING		X
SENIOR AFFORDABLE HOUSING CORP #4 DBA: MOUTAIN VISTAS - 30-0032292, 516 BURCHETT STREET, GLENDALE, CA 91203	AFFORDABLE HOUSING	CALIFORNIA	501(C)(3)	LINE 7	HUMANGOOD AFFORDABLE HOUSING		X
ANDRES DUARTE TERRACE - 30-0155849 516 BURCHETT STREET GLENDALE, CA 91203	AFFORDABLE HOUSING	CALIFORNIA	501(C)(3)	LINE 7	HUMANGOOD AFFORDABLE HOUSING		X
LC HOTCHKISS TERRACE - 30-0155895 516 BURCHETT STREET GLENDALE, CA 91203	AFFORDABLE HOUSING	CALIFORNIA	501(C)(3)	LINE 7	HUMANGOOD AFFORDABLE HOUSING		X
SENIOR AFFORDABLE HOUSING CORP #6 WILLIAM C ARTHUR TERRACE - 30-0204104, 516 BURCHETT STREET, GLENDALE, CA 91203	AFFORDABLE HOUSING	CALIFORNIA	501(C)(3)	LINE 7	HUMANGOOD AFFORDABLE HOUSING		X
REDDING MOUNTAIN VISTAS II - 30-0239400 516 BURCHETT STREET GLENDALE, CA 91203	AFFORDABLE HOUSING	CALIFORNIA	501(C)(3)	LINE 7	HUMANGOOD AFFORDABLE HOUSING		X
SIERRA GATEWAY SENIOR RESIDENCE - 30-0239445 516 BURCHETT STREET GLENDALE, CA 91203	AFFORDABLE HOUSING	CALIFORNIA	501(C)(3)	LINE 7	HUMANGOOD AFFORDABLE HOUSING		X
BANDERA SENIOR HOUSING CORP DBA: GEORGE MCDONALD COURT - 31-1538768, 516 BURCHETT STREET, GLENDALE, CA 91203	AFFORDABLE HOUSING	CALIFORNIA	501(C)(3)	LINE 7	HUMANGOOD AFFORDABLE HOUSING		X
SENIOR AFFORDABLE HOUSING CORP #1 DBA: OTTO GRUBER HOUSING - 31-1538772, 516 BURCHETT STREET, GLENDALE, CA 91203	AFFORDABLE HOUSING	CALIFORNIA	501(C)(3)	LINE 7	HUMANGOOD AFFORDABLE HOUSING		X

Part II Continuation of Identification of Related Tax-Exempt Organizations

(a) Name, address, and EIN of related organization	(b) Primary activity	(c) Legal domicile (state or foreign country)	(d) Exempt Code section	(e) Public charity status (if section 501(c)(3))	(f) Direct controlling entity	(g) Section 512(b)(13) controlled organization?	
						Yes	No
BEACON SENIOR HOUSING CORP DBA ROSEWOOD COURT - 31-1654224, 516 BURCHETT STREET, GLENDALE, CA 91203	AFFORDABLE HOUSING	CALIFORNIA	501(C)(3)	LINE 7	HUMANGOOD AFFORDABLE HOUSING		X
SENIOR AFFORDABLE HOUSING CORP #2 DBA: CLARK TERRACE II - 31-1718833, 516 BURCHETT STREET, GLENDALE, CA 91203	AFFORDABLE HOUSING	CALIFORNIA	501(C)(3)	LINE 7	HUMANGOOD AFFORDABLE HOUSING		X
COMMUNITY CARE FOR ADULTS - 33-0110895 516 BURCHETT STREET GLENDALE, CA 91203	INACTIVE CORPORATION	CALIFORNIA	501(C)(3)	LINE 10			X
CENTER FOR AGING RESOURCES - 33-0368618 516 BURCHETT STREET GLENDALE, CA 91203	INACTIVE CORPORATION	CALIFORNIA	501(C)(3)	LINE 7			X
THE REDWOOD FOUNDATION FOR SENIOR SERVICES - 33-0368622, 516 BURCHETT STREET, GLENDALE, CA 91203	INACTIVE CORPORATION	CALIFORNIA	501(C)(3)	LINE 10			X
LIL JACKSON SENIOR COMMUNITY - 41-2205339 516 BURCHETT STREET GLENDALE, CA 91203	AFFORDABLE HOUSING	CALIFORNIA	501(C)(3)	LINE 7	HUMANGOOD AFFORDABLE HOUSING		X
SIERRA GATEWAY SENIOR RESIDENCE II - 45-4945583, 516 BURCHETT STREET, GLENDALE, CA 91203	AFFORDABLE HOUSING	CALIFORNIA	501(C)(3)	LINE 7	HUMANGOOD AFFORDABLE HOUSING		X
HUMANGOOD NORCAL - 94-1225374 6120 STONERIDGE MALL ROAD SUITE 100 PLEASANTON, CA 94588	LIFE PLAN COMMUNITIES	CALIFORNIA	501(C)(3)	LINE 10	HUMANGOOD		X
TWELVE OAKS FOUNDATION - 95-1750019 516 BURCHETT STREET GLENDALE, CA 91203	ASSISTED LIVING RESIDENCE/RESIDENTIAL CARE FACILITY FOR THE ELDERLY	CALIFORNIA	501(C)(3)	LINE 10			X
SYCAMORE TERRACE INC - 95-3248885 516 BURCHETT STREET GLENDALE, CA 91203	AFFORDABLE HOUSING	CALIFORNIA	501(C)(3)	LINE 7	HUMANGOOD AFFORDABLE HOUSING		X
CASA DE LA PALOMA - 95-3276173 516 BURCHETT STREET GLENDALE, CA 91203	AFFORDABLE HOUSING	CALIFORNIA	501(C)(3)	LINE 7	HUMANGOOD AFFORDABLE HOUSING		X
PARK PASEO - 95-3628584 516 BURCHETT STREET GLENDALE, CA 91203	AFFORDABLE HOUSING	CALIFORNIA	501(C)(3)	LINE 7	HUMANGOOD AFFORDABLE HOUSING		X

Part II Continuation of Identification of Related Tax-Exempt Organizations

(a) Name, address, and EIN of related organization	(b) Primary activity	(c) Legal domicile (state or foreign country)	(d) Exempt Code section	(e) Public charity status (if section 501(c)(3))	(f) Direct controlling entity	(g) Section 512(b)(13) controlled organization?	
						Yes	No
PALMER AVENUE RETIREMENT CORP - 95-3864197 516 BURCHETT STREET GLENDALE, CA 91203	AFFORDABLE HOUSING	CALIFORNIA	501(C)(3)	LINE 10	HUMANGOOD AFFORDABLE HOUSING		X
CANTERBURY VILLAGE RETIREMENT CORP - 95-3864198, 516 BURCHETT STREET, GLENDALE, CA 91203	AFFORDABLE HOUSING	CALIFORNIA	501(C)(3)	LINE 7	HUMANGOOD AFFORDABLE HOUSING		X
WESTMINSTER COURT - 95-3866226 516 BURCHETT STREET GLENDALE, CA 91203	AFFORDABLE HOUSING	CALIFORNIA	501(C)(3)	LINE 7	HUMANGOOD AFFORDABLE HOUSING		X
SOROPTIMIST GARDENS HOUSING CORP DBA: THE GARDENS - 95-3927250, 516 BURCHETT STREET, GLENDALE, CA 91203	AFFORDABLE HOUSING	CALIFORNIA	501(C)(3)	LINE 7	HUMANGOOD AFFORDABLE HOUSING		X
WESTMINSTER GARDENS DEVELOPMENT ENDOWMENT CORP - 95-4323750, 516 BURCHETT STREET, GLENDALE, CA 91203	INACTIVE CORPORATION	CALIFORNIA	501(C)(3)	LINE 10			X
CASTLE ARGYLE - 95-4454256 516 BURCHETT STREET GLENDALE, CA 91203	AFFORDABLE HOUSING	CALIFORNIA	501(C)(3)	LINE 7	HUMANGOOD AFFORDABLE HOUSING		X
MOUNTAIN PARK TERRACE INC DBA CLARK TERRACE - 95-4570416, 516 BURCHETT STREET, GLENDALE, CA 91203	AFFORDABLE HOUSING	CALIFORNIA	501(C)(3)	LINE 7	HUMANGOOD AFFORDABLE HOUSING		X
PRESBYTERIAN HOMES OF THE WEST - 95-4581745 516 BURCHETT STREET GLENDALE, CA 91203	INACTIVE CORPORATION	CALIFORNIA	501(C)(3)	LINE 10			X
VENICE SENIOR HOUSING CORP DBA ADDA & PAUL SAFRAN SR HOUSING - 95-4607627, 516 BURCHETT STREET, GLENDALE, CA 91203	AFFORDABLE HOUSING	CALIFORNIA	501(C)(3)	LINE 7	HUMANGOOD AFFORDABLE HOUSING		X
PRESBYTERIAN HOMES AND SERVICES OF THE WEST - 95-6058276, 516 BURCHETT STREET, GLENDALE, CA 91203	INACTIVE CORPORATION	CALIFORNIA	501(C)(3)	LINE 10			X
JUDSON TERRACE HOMES - 95-6153706 6120 STONERIDGE MALL ROAD SUITE 100 PLEASANTON, CA 94588	AFFORDABLE HOUSING	CALIFORNIA	501(C)(3)	LINE 10	HUMANGOOD AFFORDABLE HOUSING		X

Part III Identification of Related Organizations Taxable as a Partnership. Complete if the organization answered "Yes" on Form 990, Part IV, line 34, because it had one or more related organizations treated as a partnership during the tax year.

(a) Name, address, and EIN of related organization	(b) Primary activity	(c) Legal domicile (state or foreign country)	(d) Direct controlling entity	(e) Predominant income (related, unrelated, excluded from tax under sections 512-514)	(f) Share of total income	(g) Share of end-of-year assets	(h) Disproportionate allocations?		(i) Code V-UBI amount in box 20 of Schedule K-1 (Form 1065)	(j) General or managing partner?		(k) Percentage ownership
							Yes	No		Yes	No	

Part IV Identification of Related Organizations Taxable as a Corporation or Trust. Complete if the organization answered "Yes" on Form 990, Part IV, line 34, because it had one or more related organizations treated as a corporation or trust during the tax year.

(a) Name, address, and EIN of related organization	(b) Primary activity	(c) Legal domicile (state or foreign country)	(d) Direct controlling entity	(e) Type of entity (C corp, S corp, or trust)	(f) Share of total income	(g) Share of end-of-year assets	(h) Percentage ownership	(i) Section 512(b)(13) controlled entity?	
								Yes	No

Part V Transactions With Related Organizations. Complete if the organization answered "Yes" on Form 990, Part IV, line 34, 35b, or 36.

Note: Complete line 1 if any entity is listed in Parts II, III, or IV of this schedule.

1 During the tax year, did the organization engage in any of the following transactions with one or more related organizations listed in Parts II-IV?

	Yes	No
a Receipt of (i) interest, (ii) annuities, (iii) royalties, or (iv) rent from a controlled entity		X
b Gift, grant, or capital contribution to related organization(s)		X
c Gift, grant, or capital contribution from related organization(s)	X	
d Loans or loan guarantees to or for related organization(s)		X
e Loans or loan guarantees by related organization(s)	X	
f Dividends from related organization(s)		X
g Sale of assets to related organization(s)		X
h Purchase of assets from related organization(s)		X
i Exchange of assets with related organization(s)		X
j Lease of facilities, equipment, or other assets to related organization(s)		X
k Lease of facilities, equipment, or other assets from related organization(s)		X
l Performance of services or membership or fundraising solicitations for related organization(s)		X
m Performance of services or membership or fundraising solicitations by related organization(s)	X	
n Sharing of facilities, equipment, mailing lists, or other assets with related organization(s)	X	
o Sharing of paid employees with related organization(s)	X	
p Reimbursement paid to related organization(s) for expenses	X	
q Reimbursement paid by related organization(s) for expenses	X	
r Other transfer of cash or property to related organization(s)	X	
s Other transfer of cash or property from related organization(s)	X	

2 If the answer to any of the above is "Yes," see the instructions for information on who must complete this line, including covered relationships and transaction thresholds.

	(a) Name of related organization	(b) Transaction type (a-s)	(c) Amount involved	(d) Method of determining amount involved
(1)				
(2)				
(3)				
(4)				
(5)				
(6)				

Part VI **Unrelated Organizations Taxable as a Partnership.** Complete if the organization answered "Yes" on Form 990, Part IV, line 37.

Provide the following information for each entity taxed as a partnership through which the organization conducted more than five percent of its activities (measured by total assets or gross revenue) that was not a related organization. See instructions regarding exclusion for certain investment partnerships.

(a) Name, address, and EIN of entity	(b) Primary activity	(c) Legal domicile (state or foreign country)	(d) Predominant income (related, unrelated, excluded from tax under sections 512-514)	(e) <small>Are all partners sec. 501(c)(3) orgs.?</small>		(f) Share of total income	(g) Share of end-of-year assets	(h) <small>Dispropor- tionate allocations?</small>		(i) Code V-UBI amount in box 20 of Schedule K-1 (Form 1065)	(j) <small>General or managing partner?</small>		(k) Percentage ownership
				Yes	No			Yes	No		Yes	No	

Part VII Supplemental Information

Provide additional information for responses to questions on Schedule R. See instructions.

PART II, IDENTIFICATION OF RELATED TAX-EXEMPT ORGANIZATIONS:

NAME, ADDRESS, AND EIN OF RELATED ORGANIZATION:

HUMANGOOD FRESNO DBA THE TERRACES AT SAN JOAQUIN GARDENS

EIN: 26-0650298

6120 STONERIDGE MALL ROAD SUITE 100

PLEASANTON, CA 94588

NAME, ADDRESS, AND EIN OF RELATED ORGANIZATION:

HUMANGOOD WASHINGTON DBA JUDSON PARK RETIREMENT COMMUNITY

EIN: 91-1659735

6120 STONERIDGE MALL ROAD SUITE 100

PLEASANTON, CA 94588

NAME OF RELATED ORGANIZATION:

MANTUA PRESBYTERIAN APARTMENTS, INC.

DIRECT CONTROLLING ENTITY: PHILADELPHIA PRESBYTERY HOMES AND SERVICES FOR THE AGING

NAME OF RELATED ORGANIZATION:

PASCHALL SENIOR HOUSING, INC.

DIRECT CONTROLLING ENTITY: PHILADELPHIA PRESBYTERY HOMES AND SERVICES FOR THE AGING

NAME OF RELATED ORGANIZATION:

MAKEMIE AT WHITELAND

DIRECT CONTROLLING ENTITY: PHILADELPHIA PRESBYTERY HOMES AND SERVICES FOR THE AGING

Part VII Supplemental Information

Provide additional information for responses to questions on Schedule R. See instructions.

NAME OF RELATED ORGANIZATION:

PHILADELPHIA PRESBYTERY APARTMENTS OF MORRISVILLE, INC.

DIRECT CONTROLLING ENTITY: PHILADELPHIA PRESBYTERY HOMES AND SERVICES FOR THE AGING

NAME OF RELATED ORGANIZATION:

PRESBYTERIAN HOME AT 58TH STREET

DIRECT CONTROLLING ENTITY: PHILADELPHIA PRESBYTERY HOMES AND SERVICES FOR THE AGING

NAME OF RELATED ORGANIZATION:

HUMANGOOD PENNSYLVANIA FKA PHILADELPHIA PRESBYTERY HOMES, INC.

DIRECT CONTROLLING ENTITY: PHILADELPHIA PRESBYTERY HOMES AND SERVICES FOR THE AGING

NAME OF RELATED ORGANIZATION:

PHILADELPHIA PRESBYTERY APARTMENTS, INC.

DIRECT CONTROLLING ENTITY: PHILADELPHIA PRESBYTERY HOMES AND SERVICES FOR THE AGING

NAME OF RELATED ORGANIZATION:

GERMANTOWN INTERFAITH HOUSING, INC.

DIRECT CONTROLLING ENTITY: PHILADELPHIA PRESBYTERY HOMES AND SERVICES FOR THE AGING

NAME OF RELATED ORGANIZATION:

Part VII Supplemental Information

Provide additional information for responses to questions on Schedule R. See instructions.

GRACE COURT, INC.

DIRECT CONTROLLING ENTITY: PHILADELPHIA PRESBYTERY HOMES AND SERVICES FOR THE AGING

NAME OF RELATED ORGANIZATION:

PRESBYTERIAN APARTMENTS AT 58TH STREET, INC.

DIRECT CONTROLLING ENTITY: PHILADELPHIA PRESBYTERY HOMES AND SERVICES FOR THE AGING

NAME OF RELATED ORGANIZATION:

SOUTHWEST PHILADELPHIA PRESBYTERY APARTMENTS, INC.

DIRECT CONTROLLING ENTITY: PHILADELPHIA PRESBYTERY HOMES AND SERVICES FOR THE AGING

NAME OF RELATED ORGANIZATION:

TIOGA PRESBYTERIAN APARTMENTS, INC.

DIRECT CONTROLLING ENTITY: PHILADELPHIA PRESBYTERY HOMES AND SERVICES FOR THE AGING

NAME OF RELATED ORGANIZATION:

OLD CITY PRESBYTERIAN APARTMENTS, INC.

DIRECT CONTROLLING ENTITY: PHILADELPHIA PRESBYTERY HOMES AND SERVICES FOR THE AGING

NAME OF RELATED ORGANIZATION:

BALA PRESBYTERIAN HOME FOUNDATION

DIRECT CONTROLLING ENTITY: PHILADELPHIA PRESBYTERY HOMES AND SERVICES FOR THE AGING

Part VII Supplemental Information

Provide additional information for responses to questions on Schedule R. See instructions.

NAME OF RELATED ORGANIZATION:

PRESBYSERVICES

DIRECT CONTROLLING ENTITY: PHILADELPHIA PRESBYTERY HOMES AND SERVICES FOR THE AGING

NAME OF RELATED ORGANIZATION:

AVENUE OF THE ARTS PRESBYTERIAN-PSC APARTMENTS, INC.

DIRECT CONTROLLING ENTITY: PHILADELPHIA PRESBYTERY HOMES AND SERVICES FOR THE AGING

NAME OF RELATED ORGANIZATION:

SOUTHWEST PHILADELPHIA NEIGHBORHOOD RENEWAL PROGRAM

DIRECT CONTROLLING ENTITY: PHILADELPHIA PRESBYTERY HOMES AND SERVICES FOR THE AGING

NAME OF RELATED ORGANIZATION:

PHILADELPHIA PRESBYTERY HOMES WC TRUST

DIRECT CONTROLLING ENTITY: PHILADELPHIA PRESBYTERY HOMES AND SERVICES FOR THE AGING

NAME OF RELATED ORGANIZATION:

SOUTH PHILADELPHIA PRESBYTERIAN APARTMENTS, INC.

DIRECT CONTROLLING ENTITY: PHILADELPHIA PRESBYTERY HOMES AND SERVICES FOR THE AGING

NAME OF RELATED ORGANIZATION:

GREENWAY PRESBYTERIAN APARTMENTS, INC.

Part VII Supplemental Information

Provide additional information for responses to questions on Schedule R. See instructions.

DIRECT CONTROLLING ENTITY: PHILADELPHIA PRESBYTERY HOMES AND SERVICES FOR
THE AGING

Application for Automatic Extension of Time To File an Exempt Organization Return

Department of the Treasury
Internal Revenue Service

▶ **File a separate application for each return.**
▶ **Go to www.irs.gov/Form8868 for the latest information.**

Electronic filing (e-file). You can electronically file Form 8868 to request a 6-month automatic extension of time to file any of the forms listed below with the exception of Form 8870, Information Return for Transfers Associated With Certain Personal Benefit Contracts, for which an extension request must be sent to the IRS in paper format (see instructions). For more details on the electronic filing of this form, visit www.irs.gov/e-file-providers/e-file-for-charities-and-non-profits.

Automatic 6-Month Extension of Time. Only submit original (no copies needed).

All corporations required to file an income tax return other than Form 990-T (including 1120-C filers), partnerships, REMICs, and trusts must use Form 7004 to request an extension of time to file income tax returns.

Type or print	Name of exempt organization or other filer, see instructions. HUMANGOOD ARIZONA, INC.	Taxpayer identification number (TIN) 86-0176446
File by the due date for filing your return. See instructions.	Number, street, and room or suite no. If a P.O. box, see instructions. C/O 6120 STONERIDGE MALL RD., NO. 100	
	City, town or post office, state, and ZIP code. For a foreign address, see instructions. PLEASANTON, CA 94588	

Enter the Return Code for the return that this application is for (file a separate application for each return) 0 | 1

Application Is For	Return Code	Application Is For	Return Code
Form 990 or Form 990-EZ	01	Form 990-T (corporation)	07
Form 990-BL	02	Form 1041-A	08
Form 4720 (individual)	03	Form 4720 (other than individual)	09
Form 990-PF	04	Form 5227	10
Form 990-T (sec. 401(a) or 408(a) trust)	05	Form 6069	11
Form 990-T (trust other than above)	06	Form 8870	12

ANDREW MCDONALD, CFO - C/O 6120 STONERIDGE MALL RD., NO.

- The books are in the care of ▶ **100 - PLEASANTON, CA 94588**
Telephone No. ▶ **925-924-7196** Fax No. ▶ _____
- If the organization does not have an office or place of business in the United States, check this box
- If this is for a Group Return, enter the organization's four digit Group Exemption Number (GEN) _____. If this is for the whole group, check this box . If it is for part of the group, check this box and attach a list with the names and TINs of all members the extension is for.

1 I request an automatic 6-month extension of time until **NOVEMBER 16, 2020**, to file the exempt organization return for the organization named above. The extension is for the organization's return for:
▶ calendar year **2019** or
▶ tax year beginning _____, and ending _____.

2 If the tax year entered in line 1 is for less than 12 months, check reason: Initial return Final return
 Change in accounting period

3a If this application is for Forms 990-BL, 990-PF, 990-T, 4720, or 6069, enter the tentative tax, less any nonrefundable credits. See instructions.	3a	\$	0.
b If this application is for Forms 990-PF, 990-T, 4720, or 6069, enter any refundable credits and estimated tax payments made. Include any prior year overpayment allowed as a credit.	3b	\$	0.
c Balance due. Subtract line 3b from line 3a. Include your payment with this form, if required, by using EFTPS (Electronic Federal Tax Payment System). See instructions.	3c	\$	0.

Caution: If you are going to make an electronic funds withdrawal (direct debit) with this Form 8868, see Form 8453-EO and Form 8879-EO for payment instructions.