

**Top Notes for HumanGood SoCal Form 990**  
**Year Ended December 31, 2020**  
**Filed on 2020 Tax Forms**

These top notes are to be read in conjunction with the Form 990 for HumanGood SoCal. Following these top notes is an organization chart for HumanGood that is highlighted to show HumanGood SoCal's relationship to the affiliated group. HumanGood SoCal is the second largest member of the group and is comprised of the Community Support Center and six California Life Plan Communities ("LPCs", formerly Continuing Care Retirement Communities or CCRCs).

HumanGood's affiliation with Presby's Inspired Life became effective June 30, 2019. On that date, the corporate parent of Presby's Inspired Life (Philadelphia Presbyterian Homes and Services for the Aging dba Presby's Inspired Life) was renamed as HumanGood East. Separate returns are prepared for HumanGood East and its subsidiaries; however, because of the affiliate relationship and shared management team, more affiliates are disclosed on each return.

Official HUD approval was received in 2019 to change the legal sponsor and managing agent for certain Affordable Housing organizations from HumanGood SoCal to HumanGood Affordable Housing. In conjunction with finalizing transfer agreements in 2019, HumanGood Cornerstone became the sole member of both HumanGood Affordable Housing and Beacon Development Group. Effective for 2021, Beacon Development Group became a subsidiary of HumanGood Affordable Housing.

HumanGood SoCal and its affiliates under HumanGood encompass a number of legal entities with separate Form 990's. As such, reviewing a single legal entity's Form 990 provides an incomplete reflection of total activities.

The Form 990 must be submitted electronically and the software supporting form submittal provides a limited format in which to describe the entire organizational structure of HumanGood SoCal and HumanGood SoCal's parent, HumanGood.

The following comments will hopefully assist readers in understanding the various forms that comprise the tax filing:

Form 990 Part IV

This part asks 38 questions which if answered "yes" often trigger a requirement to provide additional information through supplemental schedules.

Question 10 in this section asks about quasi-endowment funds. While the legal entity does not hold quasi-endowment funds, its affiliate, HumanGood Foundation South does. This is disclosed in the Foundation South Form 990.

Question 12 asks if the legal entity HumanGood SoCal obtained its own separate audit. The legal entity HumanGood SoCal is included in the annual audit of the HumanGood California Obligated Group & Foundation Affiliates, so while it is audited, it is not audited on a stand-alone basis. This is also the case for the following affiliates:

- HumanGood NorCal

- HumanGood Fresno, dba Terraces at San Joaquin Gardens
- HumanGood Foundation West
- HumanGood Foundation South

Each of these entities has been included in the annual audit of the HumanGood California Obligated Group & Foundation Affiliates, and their information is included in the supplementary combining schedules accompanying the annual audit. Each of these entities also has their own separate Form 990.

Question 23 requires the preparation of a supplemental compensation Schedule J if there are any employees being paid over \$150,000.

Question 34 requires the disclosure of affiliated entities on a supplemental Schedule R. The manner in which affiliates are required to be disclosed is awkward and we believe affiliates are better presented in an organizational chart format following these top notes.

#### Form 990 Part V

This part makes inquiries about other IRS filings and tax compliance. HumanGood SoCal is in compliance with tax regulations.

#### Form 990 Part VI

This part makes inquiries about governance and other policies. Most of this information is provided on supplemental Schedule O. Section A question 1b asks for voting members of the government body who are independent. Based on our tax professionals' interpretation, only board members who did not receive stipends during the year are listed here as independent. The only board members receiving stipends are the seven members serving at the highest level of the organization chart.

#### Form 990 Part VII

This part includes compensation disclosure information which is also included in more detail on Schedule J. This schedule is required to be prepared on a calendar year basis and is consistent with the period for the Form 990 for 2020.

#### Form 990 Parts VIII, IX and X

These parts of the Form 990 are the core financial statements in a slightly different format than the annual audit. To more directly associate this Form 990 with HumanGood California Obligated Group & Foundation Affiliates' audit for the year ended December 31, 2020, Part IX of the Form 990 should be compared with the column entitled "HumanGood SoCal" on page 45 of the audited financial statements. Part X of the Form 990 should be compared with the column entitled "HumanGood SoCal" on pages 43 and 44 of the audited financial statements.

#### Schedule A

This schedule calculates a public support percentage to support HumanGood SoCal's public charity status. Since service revenue is the vast majority of HumanGood SoCal's revenue, this is not an issue.

#### Schedule B

Schedule of contributors is not required to be filed with the Form 990 publicly due to confidentiality issues. Contributions to support HumanGood SoCal are primarily received through HumanGood Foundation South. In 2020, schedule B also includes funds received from COVID Provider Relief funding sources.

#### Schedule C

This schedule is included because our annual dues to Leading Age contain a small percentage of fees used for lobbying on behalf of our industry. Amounts for each reporting entity are shown in Part II- B line 1i and explained in Part IV as supplemental information.

#### Schedule D

This schedule provides additional disclosure for selected balance sheet accounts for the legal entity.

#### Schedule J

This schedule provides additional compensation information. This schedule is included in many of HumanGood SoCal affiliates returns as well. It is important to note that compensation paid by the organization is listed on line (i) for each individual or if it is paid by an affiliated organization, it is listed on line (ii).

While management team members are paid by one legal entity, the related costs are allocated equitably among the affiliated entities. Compensation listed on schedule J is for calendar year 2020.

#### Schedule K

This schedule details compliance areas that are significant regarding maintaining the tax exempt status of HumanGood SoCal's debt. Outside expertise was engaged to assist in determining the adequacy of the disclosures.

#### Schedule R

This schedule details related organizations in a different format than the attached organization chart. In addition, Part V of the form identifies transactions with related organizations.

#### Schedule O

Contains supplemental disclosures required by other forms and Schedules. The order of the disclosures is determined by the tax return software used by HumanGood SoCal's tax advisor.

#### Additional Disclosure

HumanGood SoCal financial statements and other data are posted on HumanGood's website at [www.humangood.org](http://www.humangood.org). In addition, a wealth of financial information is available from the website of the Municipal Securities Rulemaking Board (MSRB), Electronic Municipal Market Access, [emma.msrb.org](http://emma.msrb.org), using one of the following HumanGood SoCal CUSIP numbers:

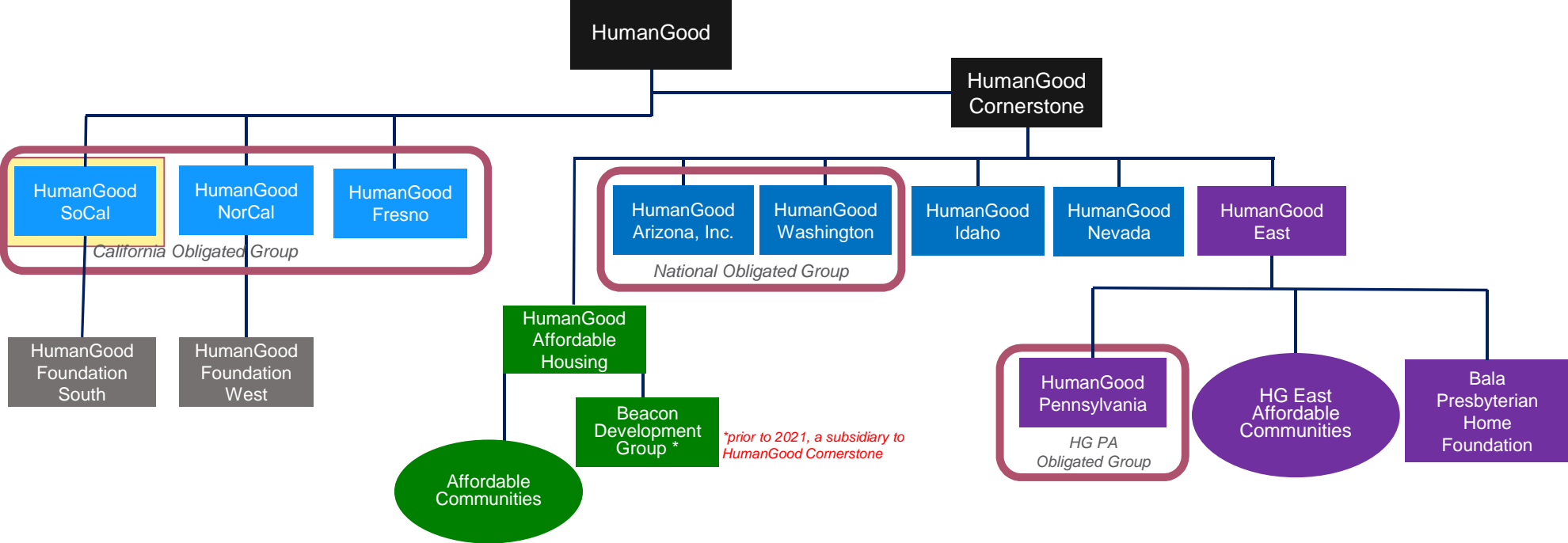
13048VKN7

13048VKP2

13048VLB2

After entering one of the CUSIP numbers, information can be selected for review from the "Continuing Disclosure" tab.

# human good



# Application for Automatic Extension of Time To File an Exempt Organization Return

Department of the Treasury  
Internal Revenue Service

▶ **File a separate application for each return.**  
▶ **Go to [www.irs.gov/Form8868](http://www.irs.gov/Form8868) for the latest information.**

**Electronic filing (e-file).** You can electronically file Form 8868 to request a 6-month automatic extension of time to file any of the forms listed below with the exception of Form 8870, Information Return for Transfers Associated With Certain Personal Benefit Contracts, for which an extension request must be sent to the IRS in paper format (see instructions). For more details on the electronic filing of this form, visit [www.irs.gov/e-file-providers/e-file-for-charities-and-non-profits](http://www.irs.gov/e-file-providers/e-file-for-charities-and-non-profits).

**Automatic 6-Month Extension of Time.** Only submit original (no copies needed).

All corporations required to file an income tax return other than Form 990-T (including 1120-C filers), partnerships, REMICs, and trusts must use Form 7004 to request an extension of time to file income tax returns.

<b>Type or print</b>	Name of exempt organization or other filer, see instructions. <b>HUMANGOOD SOCIAL</b>	Taxpayer identification number (TIN) <b>95-1894293</b>
File by the due date for filing your return. See instructions.	Number, street, and room or suite no. If a P.O. box, see instructions. <b>1900 HUNTINGTON DRIVE</b>	
	City, town or post office, state, and ZIP code. For a foreign address, see instructions. <b>DUARTE, CA 91010</b>	

Enter the Return Code for the return that this application is for (file a separate application for each return) 0 | 1

Application Is For	Return Code	Application Is For	Return Code
Form 990 or Form 990-EZ	01	Form 990-T (corporation)	07
Form 990-BL	02	Form 1041-A	08
Form 4720 (individual)	03	Form 4720 (other than individual)	09
Form 990-PF	04	Form 5227	10
Form 990-T (sec. 401(a) or 408(a) trust)	05	Form 6069	11
Form 990-T (trust other than above)	06	Form 8870	12

**ANDREW MCDONALD, CFO**

- The books are in the care of ▶ **1900 HUNTINGTON DRIVE - DUARTE, CA 91010**  
Telephone No. ▶ **925-924-7196** Fax No. ▶ \_\_\_\_\_
- If the organization does not have an office or place of business in the United States, check this box
- If this is for a Group Return, enter the organization's four digit Group Exemption Number (GEN) \_\_\_\_\_. If this is for the whole group, check this box . If it is for part of the group, check this box  and attach a list with the names and TINs of all members the extension is for.

**1** I request an automatic 6-month extension of time until **NOVEMBER 15, 2021**, to file the exempt organization return for the organization named above. The extension is for the organization's return for:  
▶  calendar year **2020** or  
▶  tax year beginning \_\_\_\_\_, and ending \_\_\_\_\_.

**2** If the tax year entered in line 1 is for less than 12 months, check reason:  Initial return  Final return  
 Change in accounting period

<b>3a</b> If this application is for Forms 990-BL, 990-PF, 990-T, 4720, or 6069, enter the tentative tax, less any nonrefundable credits. See instructions.	<b>3a</b>	\$	0.
<b>b</b> If this application is for Forms 990-PF, 990-T, 4720, or 6069, enter any refundable credits and estimated tax payments made. Include any prior year overpayment allowed as a credit.	<b>3b</b>	\$	0.
<b>c Balance due.</b> Subtract line 3b from line 3a. Include your payment with this form, if required, by using EFTPS (Electronic Federal Tax Payment System). See instructions.	<b>3c</b>	\$	0.

**Caution:** If you are going to make an electronic funds withdrawal (direct debit) with this Form 8868, see Form 8453-EO and Form 8879-EO for payment instructions.

Form **990**

**Return of Organization Exempt From Income Tax**

OMB No. 1545-0047

Under section 501(c), 527, or 4947(a)(1) of the Internal Revenue Code (except private foundations)

**2020**

Department of the Treasury  
Internal Revenue Service

▶ Do not enter social security numbers on this form as it may be made public.  
▶ Go to [www.irs.gov/Form990](http://www.irs.gov/Form990) for instructions and the latest information.

Open to Public Inspection

**A For the 2020 calendar year, or tax year beginning and ending**

<b>B</b> Check if applicable: <input checked="" type="checkbox"/> Address change <input type="checkbox"/> Name change <input type="checkbox"/> Initial return <input type="checkbox"/> Final return/terminated <input type="checkbox"/> Amended return <input type="checkbox"/> Application pending	<b>C Name of organization</b> <b>HUMANGOOD SOCIAL</b>		<b>D Employer identification number</b> <b>95-1894293</b>
	Doing business as		<b>E Telephone number</b> <b>818-247-0420</b>
	Number and street (or P.O. box if mail is not delivered to street address)	Room/suite	
	<b>1900 HUNTINGTON DRIVE</b>		<b>G Gross receipts \$</b> <b>159,026,124.</b>
	City or town, state or province, country, and ZIP or foreign postal code <b>DUARTE, CA 91010</b>		
<b>F Name and address of principal officer: JOHN H. COCHRANE, III SAME AS C ABOVE</b>		<b>H(a) Is this a group return for subordinates? ....</b> <input type="checkbox"/> Yes <input checked="" type="checkbox"/> No <b>H(b) Are all subordinates included?</b> Yes No If "No," attach a list. See instructions <b>H(c) Group exemption number</b> ▶	

**I Tax-exempt status:**  501(c)(3) 501(c) ( ) ◀ (insert no.) 4947(a)(1) or 527

**J Website:** ▶ **WWW.HUMANGOOD.ORG**

**K Form of organization:**  Corporation Trust Association Other ▶ **L Year of formation:** 1955 **M State of legal domicile:** CA

**Part I Summary**

<b>Activities &amp; Governance</b>	<b>1</b> Briefly describe the organization's mission or most significant activities: <b>TO HELP OLDER ADULTS LIVE THEIR BEST LIVES POSSIBLE, HOWEVER THEY DEFINE IT.</b>
	<b>2</b> Check this box <input type="checkbox"/> if the organization discontinued its operations or disposed of more than 25% of its net assets.
	<b>3</b> Number of voting members of the governing body (Part VI, line 1a) <b>3</b> <b>9</b>
	<b>4</b> Number of independent voting members of the governing body (Part VI, line 1b) <b>4</b> <b>2</b>
	<b>5</b> Total number of individuals employed in calendar year 2020 (Part V, line 2a) <b>5</b> <b>1483</b>
	<b>6</b> Total number of volunteers (estimate if necessary) <b>6</b> <b>2</b>
	<b>7 a</b> Total unrelated business revenue from Part VIII, column (C), line 12 <b>7a</b> <b>0.</b> <b>b</b> Net unrelated business taxable income from Form 990-T, Part I, line 11 <b>7b</b> <b>0.</b>
<b>Revenue</b>	<b>8</b> Contributions and grants (Part VIII, line 1h) <b>Prior Year</b> 439,966. <b>Current Year</b> 3,408,639.
	<b>9</b> Program service revenue (Part VIII, line 2g) <b>94,360,058.</b> <b>103,019,693.</b>
	<b>10</b> Investment income (Part VIII, column (A), lines 3, 4, and 7d) <b>6,187,792.</b> <b>4,881,251.</b>
	<b>11</b> Other revenue (Part VIII, column (A), lines 5, 6d, 8c, 9c, 10c, and 11e) <b>2,281,595.</b> <b>1,180,501.</b>
	<b>12</b> Total revenue - add lines 8 through 11 (must equal Part VIII, column (A), line 12) <b>103,269,411.</b> <b>112,490,084.</b>
<b>Expenses</b>	<b>13</b> Grants and similar amounts paid (Part IX, column (A), lines 1-3) <b>4,576,820.</b> <b>1,436,168.</b>
	<b>14</b> Benefits paid to or for members (Part IX, column (A), line 4) <b>0.</b> <b>0.</b>
	<b>15</b> Salaries, other compensation, employee benefits (Part IX, column (A), lines 5-10) <b>58,573,978.</b> <b>62,881,711.</b>
	<b>16a</b> Professional fundraising fees (Part IX, column (A), line 11e) <b>0.</b> <b>0.</b>
	<b>b</b> Total fundraising expenses (Part IX, column (D), line 25) <b>0.</b>
	<b>17</b> Other expenses (Part IX, column (A), lines 11a-11d, 11f-24e) <b>47,988,611.</b> <b>52,598,299.</b>
	<b>18</b> Total expenses. Add lines 13-17 (must equal Part IX, column (A), line 25) <b>111,139,409.</b> <b>116,916,178.</b>
<b>19</b> Revenue less expenses. Subtract line 18 from line 12 <b>-7,869,998.</b> <b>-4,426,094.</b>	
<b>Net Assets or Fund Balances</b>	<b>20</b> Total assets (Part X, line 16) <b>Beginning of Current Year</b> 291,759,666. <b>End of Year</b> 296,637,326.
	<b>21</b> Total liabilities (Part X, line 26) <b>275,487,342.</b> <b>276,764,143.</b>
	<b>22</b> Net assets or fund balances. Subtract line 21 from line 20 <b>16,272,324.</b> <b>19,873,183.</b>

**Part II Signature Block**

Under penalties of perjury, I declare that I have examined this return, including accompanying schedules and statements, and to the best of my knowledge and belief, it is true, correct, and complete. Declaration of preparer (other than officer) is based on all information of which preparer has any knowledge.

<b>Sign Here</b>	Signature of officer	Date			
	<b>ANDREW MCDONALD, CFO</b> Type or print name and title				
<b>Paid Preparer Use Only</b>	Print/Type preparer's name <b>KERRI N. BOGDA, CPA</b>	Preparer's signature <i>Kerri Bogda</i>	Date 11/5/21	Check if self-employed <input checked="" type="checkbox"/>	PTIN <b>P00760402</b>
	Firm's name ▶ <b>BAKER TILLY US, LLP</b>	Firm's EIN ▶ <b>39-0859910</b>	Phone no. <b>717.740.4863</b>		
Firm's address ▶ <b>1570 FRUITVILLE PIKE, SUITE 400 LANCASTER, PA 17601</b>					

May the IRS discuss this return with the preparer shown above? See instructions  Yes  No

Part III Statement of Program Service Accomplishments

Check if Schedule O contains a response or note to any line in this Part III [X]

1 Briefly describe the organization's mission: THE MISSION OF THE ORGANIZATION IS TO HELP OLDER ADULTS LIVE THEIR BEST LIVES POSSIBLE, HOWEVER THEY DEFINE IT, AND TO DELIVER PRODUCTS AND SERVICES THAT OFFER OPPORTUNITIES TO PURSUE ENGAGED, PURPOSEFUL LIVES.

2 Did the organization undertake any significant program services during the year which were not listed on the prior Form 990 or 990-EZ? [ ] Yes [X] No If "Yes," describe these new services on Schedule O.

3 Did the organization cease conducting, or make significant changes in how it conducts, any program services? [ ] Yes [X] No If "Yes," describe these changes on Schedule O.

4 Describe the organization's program service accomplishments for each of its three largest program services, as measured by expenses. Section 501(c)(3) and 501(c)(4) organizations are required to report the amount of grants and allocations to others, the total expenses, and revenue, if any, for each program service reported.

4a (Code: ) (Expenses \$ 102,156,143. including grants of \$ 1,436,168. ) (Revenue \$ 103,019,693. ) HUMANGOOD SOCAL, THROUGH ITS LIFE PLAN COMMUNITIES (FORMERLY CONTINUING CARE RETIREMENT COMMUNITIES) PROVIDES DIRECT RESIDENT CARE FOR SENIORS IN SIX CALIFORNIA LOCATIONS, INCLUDING INDEPENDENT LIVING AND ASSISTED LIVING, MEMORY CARE, NURSING, AND HOME CARE. IT ALSO PROVIDES OUTREACH AND WELLNESS SERVICES; SERVICES INCLUDE HOUSING, MEALS PROGRAM, HOUSEKEEPING, MAINTENANCE AND ACTIVITIES.

HUMANGOOD SOCAL ACHIEVES ITS CHARITABLE OBJECTIVES THROUGH:

- SERVICES PROVIDED TO SENIORS (A PROTECTED CLASS)
- SUBSIDIZED ALLOWANCES TO RESIDENTS UNABLE TO PAY FULLY ESTABLISHED RATES

4b (Code: ) (Expenses \$ including grants of \$ ) (Revenue \$ )

4c (Code: ) (Expenses \$ including grants of \$ ) (Revenue \$ )

4d Other program services (Describe on Schedule O.) (Expenses \$ including grants of \$ ) (Revenue \$ )

4e Total program service expenses 102,156,143.

**Part IV Checklist of Required Schedules**

	Yes	No
1 Is the organization described in section 501(c)(3) or 4947(a)(1) (other than a private foundation)? <i>If "Yes," complete Schedule A</i>	X	
2 Is the organization required to complete <i>Schedule B, Schedule of Contributors</i> ?	X	
3 Did the organization engage in direct or indirect political campaign activities on behalf of or in opposition to candidates for public office? <i>If "Yes," complete Schedule C, Part I</i>		X
4 <b>Section 501(c)(3) organizations.</b> Did the organization engage in lobbying activities, or have a section 501(h) election in effect during the tax year? <i>If "Yes," complete Schedule C, Part II</i>	X	
5 Is the organization a section 501(c)(4), 501(c)(5), or 501(c)(6) organization that receives membership dues, assessments, or similar amounts as defined in Revenue Procedure 98-19? <i>If "Yes," complete Schedule C, Part III</i>		X
6 Did the organization maintain any donor advised funds or any similar funds or accounts for which donors have the right to provide advice on the distribution or investment of amounts in such funds or accounts? <i>If "Yes," complete Schedule D, Part I</i>		X
7 Did the organization receive or hold a conservation easement, including easements to preserve open space, the environment, historic land areas, or historic structures? <i>If "Yes," complete Schedule D, Part II</i>		X
8 Did the organization maintain collections of works of art, historical treasures, or other similar assets? <i>If "Yes," complete Schedule D, Part III</i>		X
9 Did the organization report an amount in Part X, line 21, for escrow or custodial account liability, serve as a custodian for amounts not listed in Part X; or provide credit counseling, debt management, credit repair, or debt negotiation services? <i>If "Yes," complete Schedule D, Part IV</i>		X
10 Did the organization, directly or through a related organization, hold assets in donor-restricted endowments or in quasi endowments? <i>If "Yes," complete Schedule D, Part V</i>		X
11 If the organization's answer to any of the following questions is "Yes," then complete Schedule D, Parts VI, VII, VIII, IX, or X as applicable.		
a Did the organization report an amount for land, buildings, and equipment in Part X, line 10? <i>If "Yes," complete Schedule D, Part VI</i>	X	
b Did the organization report an amount for investments - other securities in Part X, line 12, that is 5% or more of its total assets reported in Part X, line 16? <i>If "Yes," complete Schedule D, Part VII</i>		X
c Did the organization report an amount for investments - program related in Part X, line 13, that is 5% or more of its total assets reported in Part X, line 16? <i>If "Yes," complete Schedule D, Part VIII</i>		X
d Did the organization report an amount for other assets in Part X, line 15, that is 5% or more of its total assets reported in Part X, line 16? <i>If "Yes," complete Schedule D, Part IX</i>		X
e Did the organization report an amount for other liabilities in Part X, line 25? <i>If "Yes," complete Schedule D, Part X</i>	X	
f Did the organization's separate or consolidated financial statements for the tax year include a footnote that addresses the organization's liability for uncertain tax positions under FIN 48 (ASC 740)? <i>If "Yes," complete Schedule D, Part X</i>	X	
12a Did the organization obtain separate, independent audited financial statements for the tax year? <i>If "Yes," complete Schedule D, Parts XI and XII</i>		X
b Was the organization included in consolidated, independent audited financial statements for the tax year? <i>If "Yes," and if the organization answered "No" to line 12a, then completing Schedule D, Parts XI and XII is optional</i>	X	
13 Is the organization a school described in section 170(b)(1)(A)(ii)? <i>If "Yes," complete Schedule E</i>		X
14a Did the organization maintain an office, employees, or agents outside of the United States?		X
b Did the organization have aggregate revenues or expenses of more than \$10,000 from grantmaking, fundraising, business, investment, and program service activities outside the United States, or aggregate foreign investments valued at \$100,000 or more? <i>If "Yes," complete Schedule F, Parts I and IV</i>		X
15 Did the organization report on Part IX, column (A), line 3, more than \$5,000 of grants or other assistance to or for any foreign organization? <i>If "Yes," complete Schedule F, Parts II and IV</i>		X
16 Did the organization report on Part IX, column (A), line 3, more than \$5,000 of aggregate grants or other assistance to or for foreign individuals? <i>If "Yes," complete Schedule F, Parts III and IV</i>		X
17 Did the organization report a total of more than \$15,000 of expenses for professional fundraising services on Part IX, column (A), lines 6 and 11e? <i>If "Yes," complete Schedule G, Part I</i>		X
18 Did the organization report more than \$15,000 total of fundraising event gross income and contributions on Part VIII, lines 1c and 8a? <i>If "Yes," complete Schedule G, Part II</i>		X
19 Did the organization report more than \$15,000 of gross income from gaming activities on Part VIII, line 9a? <i>If "Yes," complete Schedule G, Part III</i>		X
20a Did the organization operate one or more hospital facilities? <i>If "Yes," complete Schedule H</i>		X
b If "Yes" to line 20a, did the organization attach a copy of its audited financial statements to this return?		
21 Did the organization report more than \$5,000 of grants or other assistance to any domestic organization or domestic government on Part IX, column (A), line 1? <i>If "Yes," complete Schedule I, Parts I and II</i>	X	



**Part IV Checklist of Required Schedules** (continued)

	Yes	No
<b>22</b> Did the organization report more than \$5,000 of grants or other assistance to or for domestic individuals on Part IX, column (A), line 2? <i>If "Yes," complete Schedule I, Parts I and III</i> .....		X
<b>23</b> Did the organization answer "Yes" to Part VII, Section A, line 3, 4, or 5 about compensation of the organization's current and former officers, directors, trustees, key employees, and highest compensated employees? <i>If "Yes," complete Schedule J</i> .....	X	
<b>24a</b> Did the organization have a tax-exempt bond issue with an outstanding principal amount of more than \$100,000 as of the last day of the year, that was issued after December 31, 2002? <i>If "Yes," answer lines 24b through 24d and complete Schedule K. If "No," go to line 25a</i> .....	X	
<b>b</b> Did the organization invest any proceeds of tax-exempt bonds beyond a temporary period exception? .....		X
<b>c</b> Did the organization maintain an escrow account other than a refunding escrow at any time during the year to defease any tax-exempt bonds? .....		X
<b>d</b> Did the organization act as an "on behalf of" issuer for bonds outstanding at any time during the year? .....		X
<b>25a Section 501(c)(3), 501(c)(4), and 501(c)(29) organizations.</b> Did the organization engage in an excess benefit transaction with a disqualified person during the year? <i>If "Yes," complete Schedule L, Part I</i> .....		X
<b>b</b> Is the organization aware that it engaged in an excess benefit transaction with a disqualified person in a prior year, and that the transaction has not been reported on any of the organization's prior Forms 990 or 990-EZ? <i>If "Yes," complete Schedule L, Part I</i> .....		X
<b>26</b> Did the organization report any amount on Part X, line 5 or 22, for receivables from or payables to any current or former officer, director, trustee, key employee, creator or founder, substantial contributor, or 35% controlled entity or family member of any of these persons? <i>If "Yes," complete Schedule L, Part II</i> .....		X
<b>27</b> Did the organization provide a grant or other assistance to any current or former officer, director, trustee, key employee, creator or founder, substantial contributor or employee thereof, a grant selection committee member, or to a 35% controlled entity (including an employee thereof) or family member of any of these persons? <i>If "Yes," complete Schedule L, Part III</i> .....		X
<b>28</b> Was the organization a party to a business transaction with one of the following parties (see Schedule L, Part IV instructions, for applicable filing thresholds, conditions, and exceptions):		
<b>a</b> A current or former officer, director, trustee, key employee, creator or founder, or substantial contributor? <i>If "Yes," complete Schedule L, Part IV</i> .....		X
<b>b</b> A family member of any individual described in line 28a? <i>If "Yes," complete Schedule L, Part IV</i> .....		X
<b>c</b> A 35% controlled entity of one or more individuals and/or organizations described in lines 28a or 28b? <i>If "Yes," complete Schedule L, Part IV</i> .....		X
<b>29</b> Did the organization receive more than \$25,000 in non-cash contributions? <i>If "Yes," complete Schedule M</i> .....		X
<b>30</b> Did the organization receive contributions of art, historical treasures, or other similar assets, or qualified conservation contributions? <i>If "Yes," complete Schedule M</i> .....		X
<b>31</b> Did the organization liquidate, terminate, or dissolve and cease operations? <i>If "Yes," complete Schedule N, Part I</i> .....		X
<b>32</b> Did the organization sell, exchange, dispose of, or transfer more than 25% of its net assets? <i>If "Yes," complete Schedule N, Part II</i> .....		X
<b>33</b> Did the organization own 100% of an entity disregarded as separate from the organization under Regulations sections 301.7701-2 and 301.7701-3? <i>If "Yes," complete Schedule R, Part I</i> .....		X
<b>34</b> Was the organization related to any tax-exempt or taxable entity? <i>If "Yes," complete Schedule R, Part II, III, or IV, and Part V, line 1</i> .....	X	
<b>35a</b> Did the organization have a controlled entity within the meaning of section 512(b)(13)? .....	X	
<b>b</b> If "Yes" to line 35a, did the organization receive any payment from or engage in any transaction with a controlled entity within the meaning of section 512(b)(13)? <i>If "Yes," complete Schedule R, Part V, line 2</i> .....	X	
<b>36 Section 501(c)(3) organizations.</b> Did the organization make any transfers to an exempt non-charitable related organization? <i>If "Yes," complete Schedule R, Part V, line 2</i> .....		X
<b>37</b> Did the organization conduct more than 5% of its activities through an entity that is not a related organization and that is treated as a partnership for federal income tax purposes? <i>If "Yes," complete Schedule R, Part VI</i> .....		X
<b>38</b> Did the organization complete Schedule O and provide explanations in Schedule O for Part VI, lines 11b and 19? <b>Note:</b> All Form 990 filers are required to complete Schedule O .....	X	

**Part V Statements Regarding Other IRS Filings and Tax Compliance**

Check if Schedule O contains a response or note to any line in this Part V

	Yes	No
<b>1a</b> Enter the number reported in Box 3 of Form 1096. Enter -0- if not applicable .....		
<b>b</b> Enter the number of Forms W-2G included in line 1a. Enter -0- if not applicable .....		
<b>c</b> Did the organization comply with backup withholding rules for reportable payments to vendors and reportable gaming (gambling) winnings to prize winners? .....		

**Part V** Statements Regarding Other IRS Filings and Tax Compliance (continued)

		Yes	No
<b>2a</b>	Enter the number of employees reported on Form W-3, Transmittal of Wage and Tax Statements, filed for the calendar year ending with or within the year covered by this return		
	2a		1483
<b>b</b>	If at least one is reported on line 2a, did the organization file all required federal employment tax returns? <b>Note:</b> If the sum of lines 1a and 2a is greater than 250, you may be required to e-file (see instructions)	X	
<b>3a</b>	Did the organization have unrelated business gross income of \$1,000 or more during the year?		X
<b>b</b>	If "Yes," has it filed a Form 990-T for this year? If "No" to line 3b, provide an explanation on Schedule O		
<b>4a</b>	At any time during the calendar year, did the organization have an interest in, or a signature or other authority over, a financial account in a foreign country (such as a bank account, securities account, or other financial account)?		X
<b>b</b>	If "Yes," enter the name of the foreign country See instructions for filing requirements for FinCEN Form 114, Report of Foreign Bank and Financial Accounts (FBAR).		
<b>5a</b>	Was the organization a party to a prohibited tax shelter transaction at any time during the tax year?		X
<b>b</b>	Did any taxable party notify the organization that it was or is a party to a prohibited tax shelter transaction?		X
<b>c</b>	If "Yes" to line 5a or 5b, did the organization file Form 8886-T?		
<b>6a</b>	Does the organization have annual gross receipts that are normally greater than \$100,000, and did the organization solicit any contributions that were not tax deductible as charitable contributions?		X
<b>b</b>	If "Yes," did the organization include with every solicitation an express statement that such contributions or gifts were not tax deductible?		
<b>7</b>	<b>Organizations that may receive deductible contributions under section 170(c).</b>		
<b>a</b>	Did the organization receive a payment in excess of \$75 made partly as a contribution and partly for goods and services provided to the payor?		X
<b>b</b>	If "Yes," did the organization notify the donor of the value of the goods or services provided?		
<b>c</b>	Did the organization sell, exchange, or otherwise dispose of tangible personal property for which it was required to file Form 8282?		X
<b>d</b>	If "Yes," indicate the number of Forms 8282 filed during the year		
	7d		
<b>e</b>	Did the organization receive any funds, directly or indirectly, to pay premiums on a personal benefit contract?		X
<b>f</b>	Did the organization, during the year, pay premiums, directly or indirectly, on a personal benefit contract?		X
<b>g</b>	If the organization received a contribution of qualified intellectual property, did the organization file Form 8899 as required?		
<b>h</b>	If the organization received a contribution of cars, boats, airplanes, or other vehicles, did the organization file a Form 1098-C?		
<b>8</b>	<b>Sponsoring organizations maintaining donor advised funds.</b> Did a donor advised fund maintained by the sponsoring organization have excess business holdings at any time during the year?		
<b>9</b>	<b>Sponsoring organizations maintaining donor advised funds.</b>		
<b>a</b>	Did the sponsoring organization make any taxable distributions under section 4966?		
<b>b</b>	Did the sponsoring organization make a distribution to a donor, donor advisor, or related person?		
<b>10</b>	<b>Section 501(c)(7) organizations.</b> Enter:		
<b>a</b>	Initiation fees and capital contributions included on Part VIII, line 12	10a	
<b>b</b>	Gross receipts, included on Form 990, Part VIII, line 12, for public use of club facilities	10b	
<b>11</b>	<b>Section 501(c)(12) organizations.</b> Enter:		
<b>a</b>	Gross income from members or shareholders	11a	
<b>b</b>	Gross income from other sources (Do not net amounts due or paid to other sources against amounts due or received from them.)	11b	
<b>12a</b>	<b>Section 4947(a)(1) non-exempt charitable trusts.</b> Is the organization filing Form 990 in lieu of Form 1041?		
<b>b</b>	If "Yes," enter the amount of tax-exempt interest received or accrued during the year	12b	
<b>13</b>	<b>Section 501(c)(29) qualified nonprofit health insurance issuers.</b>		
<b>a</b>	Is the organization licensed to issue qualified health plans in more than one state? <b>Note:</b> See the instructions for additional information the organization must report on Schedule O.		
<b>b</b>	Enter the amount of reserves the organization is required to maintain by the states in which the organization is licensed to issue qualified health plans	13b	
<b>c</b>	Enter the amount of reserves on hand	13c	
<b>14a</b>	Did the organization receive any payments for indoor tanning services during the tax year?		X
<b>b</b>	If "Yes," has it filed a Form 720 to report these payments? If "No," provide an explanation on Schedule O		
<b>15</b>	Is the organization subject to the section 4960 tax on payment(s) of more than \$1,000,000 in remuneration or excess parachute payment(s) during the year? If "Yes," see instructions and file Form 4720, Schedule N.	X	
<b>16</b>	Is the organization an educational institution subject to the section 4968 excise tax on net investment income? If "Yes," complete Form 4720, Schedule O.		X

**Part VI Governance, Management, and Disclosure** For each "Yes" response to lines 2 through 7b below, and for a "No" response to line 8a, 8b, or 10b below, describe the circumstances, processes, or changes on Schedule O. See instructions.

Check if Schedule O contains a response or note to any line in this Part VI

**Section A. Governing Body and Management**

		Yes	No
<b>1a</b>	Enter the number of voting members of the governing body at the end of the tax year If there are material differences in voting rights among members of the governing body, or if the governing body delegated broad authority to an executive committee or similar committee, explain on Schedule O.		
<b>1b</b>	Enter the number of voting members included on line 1a, above, who are independent		
<b>2</b>	Did any officer, director, trustee, or key employee have a family relationship or a business relationship with any other officer, director, trustee, or key employee?		X
<b>3</b>	Did the organization delegate control over management duties customarily performed by or under the direct supervision of officers, directors, trustees, or key employees to a management company or other person?		X
<b>4</b>	Did the organization make any significant changes to its governing documents since the prior Form 990 was filed?		X
<b>5</b>	Did the organization become aware during the year of a significant diversion of the organization's assets?		X
<b>6</b>	Did the organization have members or stockholders?	X	
<b>7a</b>	Did the organization have members, stockholders, or other persons who had the power to elect or appoint one or more members of the governing body?	X	
<b>7b</b>	Are any governance decisions of the organization reserved to (or subject to approval by) members, stockholders, or persons other than the governing body?	X	
<b>8</b>	Did the organization contemporaneously document the meetings held or written actions undertaken during the year by the following:		
<b>8a</b>	The governing body?	X	
<b>8b</b>	Each committee with authority to act on behalf of the governing body?	X	
<b>9</b>	Is there any officer, director, trustee, or key employee listed in Part VII, Section A, who cannot be reached at the organization's mailing address? If "Yes," provide the names and addresses on Schedule O		X

**Section B. Policies** (This Section B requests information about policies not required by the Internal Revenue Code.)

		Yes	No
<b>10a</b>	Did the organization have local chapters, branches, or affiliates?		X
<b>10b</b>	If "Yes," did the organization have written policies and procedures governing the activities of such chapters, affiliates, and branches to ensure their operations are consistent with the organization's exempt purposes?		
<b>11a</b>	Has the organization provided a complete copy of this Form 990 to all members of its governing body before filing the form?	X	
<b>11b</b>	Describe in Schedule O the process, if any, used by the organization to review this Form 990.		
<b>12a</b>	Did the organization have a written conflict of interest policy? If "No," go to line 13	X	
<b>12b</b>	Were officers, directors, or trustees, and key employees required to disclose annually interests that could give rise to conflicts?	X	
<b>12c</b>	Did the organization regularly and consistently monitor and enforce compliance with the policy? If "Yes," describe in Schedule O how this was done	X	
<b>13</b>	Did the organization have a written whistleblower policy?	X	
<b>14</b>	Did the organization have a written document retention and destruction policy?	X	
<b>15</b>	Did the process for determining compensation of the following persons include a review and approval by independent persons, comparability data, and contemporaneous substantiation of the deliberation and decision?		
<b>15a</b>	The organization's CEO, Executive Director, or top management official		X
<b>15b</b>	Other officers or key employees of the organization If "Yes" to line 15a or 15b, describe the process in Schedule O (see instructions).	X	
<b>16a</b>	Did the organization invest in, contribute assets to, or participate in a joint venture or similar arrangement with a taxable entity during the year?		X
<b>16b</b>	If "Yes," did the organization follow a written policy or procedure requiring the organization to evaluate its participation in joint venture arrangements under applicable federal tax law, and take steps to safeguard the organization's exempt status with respect to such arrangements?		

**Section C. Disclosure**

- 17** List the states with which a copy of this Form 990 is required to be filed **CA**
- 18** Section 6104 requires an organization to make its Forms 1023 (1024 or 1024-A, if applicable), 990, and 990-T (Section 501(c)(3)s only) available for public inspection. Indicate how you made these available. Check all that apply.  
 Own website     Another's website     Upon request     Other (explain on Schedule O)
- 19** Describe on Schedule O whether (and if so, how) the organization made its governing documents, conflict of interest policy, and financial statements available to the public during the tax year.
- 20** State the name, address, and telephone number of the person who possesses the organization's books and records **▶**  
**ANDREW MCDONALD, CFO - 925-924-7196**  
**1900 HUNTINGTON DRIVE, DUARTE, CA 91010**

**Part VII Compensation of Officers, Directors, Trustees, Key Employees, Highest Compensated Employees, and Independent Contractors**

Check if Schedule O contains a response or note to any line in this Part VII

**Section A. Officers, Directors, Trustees, Key Employees, and Highest Compensated Employees**

**1a** Complete this table for all persons required to be listed. Report compensation for the calendar year ending with or within the organization's tax year.

- List all of the organization's **current** officers, directors, trustees (whether individuals or organizations), regardless of amount of compensation. Enter -0- in columns (D), (E), and (F) if no compensation was paid.
- List all of the organization's **current** key employees, if any. See instructions for definition of "key employee."
- List the organization's five **current** highest compensated employees (other than an officer, director, trustee, or key employee) who received reportable compensation (Box 5 of Form W-2 and/or Box 7 of Form 1099-MISC) of more than \$100,000 from the organization and any related organizations.
- List all of the organization's **former** officers, key employees, and highest compensated employees who received more than \$100,000 of reportable compensation from the organization and any related organizations.
- List all of the organization's **former directors or trustees** that received, in the capacity as a former director or trustee of the organization, more than \$10,000 of reportable compensation from the organization and any related organizations. See instructions for the order in which to list the persons above.

Check this box if neither the organization nor any related organization compensated any current officer, director, or trustee.

(A) Name and title	(B) Average hours per week (list any hours for related organizations below line)	(C) Position (do not check more than one box, unless person is both an officer and a director/trustee)						(D) Reportable compensation from the organization (W-2/1099-MISC)	(E) Reportable compensation from related organizations (W-2/1099-MISC)	(F) Estimated amount of other compensation from the organization and related organizations
		Individual trustee or director	Institutional trustee	Officer	Key employee	Highest compensated employee	Former			
(1) JOHN H. COCHRANE, III PRESIDENT/CHIEF EXECUTIVE OFFICER	8.00 32.00			X			1,015,773.	0.	26,534.	
(2) DANIEL OGUS CHIEF OPERATING OFFICER	8.00 32.00			X			769,390.	0.	30,242.	
(3) PAMELA S. CLAASSEN FORMER CFO TO 12/19; CH CAP STRATEG	4.00 14.00					X	0.	529,142.	25,636.	
(4) FLEMING MENG CHIEF INFORMATION OFFICER	8.00 32.00			X			497,810.	0.	29,856.	
(5) ANDREW MCDONALD CHIEF FINANCIAL OFFICER	8.00 32.00			X			0.	379,342.	29,758.	
(6) TROY KEACH VP HUMAN RESOURCES	12.00 28.00				X		0.	375,029.	13,057.	
(7) DENNIS GRADILLAS VP SALES	11.00 29.00				X		0.	318,163.	29,316.	
(8) TARA MCGUINNESS VP REGIONAL OPERATIONS	12.00 28.00				X		0.	308,065.	30,778.	
(9) TYLER ICHIEN VP REGIONAL OPERATIONS	12.00 28.00				X		0.	307,493.	27,444.	
(10) BETHANY GHASSEMI CHIEF LEGAL OFFICER	8.00 32.00			X			0.	318,467.	12,184.	
(11) MARC HERRERA VP HEALTHCARE & QUALITY	12.00 28.00				X		303,586.	0.	25,382.	
(12) GREGORY BEARCE VP REGIONAL OPERATIONS	12.00 28.00				X		0.	298,656.	27,874.	
(13) ANIKA HARTOUNIAN VP FINANCE	40.00					X	293,363.	0.	26,290.	
(14) GARY BORIERO EXECUTIVE DIRECTOR	40.00					X	279,915.	0.	27,645.	
(15) LISA HOLLAND VP REGIONAL OPERATIONS	12.00 28.00				X		259,562.	0.	23,603.	
(16) MELINDA FORNEY EXECUTIVE DIRECTOR	40.00					X	252,046.	0.	22,797.	
(17) SUZANNE NAGEL VP MARKETING	12.00 28.00				X		237,781.	0.	26,104.	

**Part VII** Section A. Officers, Directors, Trustees, Key Employees, and Highest Compensated Employees (continued)

(A) Name and title	(B) Average hours per week (list any hours for related organizations below line)	(C) Position (do not check more than one box, unless person is both an officer and a director/trustee)						(D) Reportable compensation from the organization (W-2/1099-MISC)	(E) Reportable compensation from related organizations (W-2/1099-MISC)	(F) Estimated amount of other compensation from the organization and related organizations
		Individual trustee or director	Institutional trustee	Officer	Key employee	Highest compensated employee	Former			
(18) JESSICA LOPEZ VP REGIONAL OPERATIONS	12.00 28.00				X		0.	246,370.	10,925.	
(19) JAMES PARK VP COMMUNICATIONS	12.00 28.00				X		231,394.	0.	22,709.	
(20) MICAELLA KIM REGIONAL CLINICAL DIRECTOR	40.00					X	219,472.	0.	16,030.	
(21) CYNTHIA SALGADO VP, IT PROJECT AND APPLICATION	40.00					X	210,263.	0.	10,490.	
(22) SUSAN (LOUISE) RANKIN FORMER SPECIAL COUNSEL	0.00 0.00						0.	122,247.	0.	
(23) RANDALL L. STAMPER CHAIR	1.00 17.20	X		X			0.	73,000.	0.	
(24) ALBERT W. KELLEY VICE CHAIR	0.50 7.40	X		X			0.	63,000.	0.	
(25) H. DECLAN BROWN SECRETARY	0.50 10.10	X		X			0.	63,000.	0.	
(26) JUDITH BAKER DIRECTOR	0.50 7.40	X					0.	63,000.	0.	
<b>1b Subtotal</b>							4,570,355.	3,464,974.	494,654.	
<b>c Total from continuation sheets to Part VII, Section A</b>							0.	169,000.	0.	
<b>d Total (add lines 1b and 1c)</b>							4,570,355.	3,633,974.	494,654.	

2 Total number of individuals (including but not limited to those listed above) who received more than \$100,000 of reportable compensation from the organization **52**

	Yes	No
3 Did the organization list any <b>former</b> officer, director, trustee, key employee, or highest compensated employee on line 1a? <i>If "Yes," complete Schedule J for such individual</i>	X	
4 For any individual listed on line 1a, is the sum of reportable compensation and other compensation from the organization and related organizations greater than \$150,000? <i>If "Yes," complete Schedule J for such individual</i>	X	
5 Did any person listed on line 1a receive or accrue compensation from any unrelated organization or individual for services rendered to the organization? <i>If "Yes," complete Schedule J for such person</i>		X

**Section B. Independent Contractors**

1 Complete this table for your five highest compensated independent contractors that received more than \$100,000 of compensation from the organization. Report compensation for the calendar year ending with or within the organization's tax year.

(A) Name and business address	(B) Description of services	(C) Compensation
MORRISON MANAGEMENT SPECIALISTS PO BOX 102289, ATLANTA, GA 30368-2289	DINING SERVICES	9,424,063.
THERAPY SPECIALISTS, 3760 CONVOY STREET STE. 204, SAN DIEGO, CA 92111	THERAPY SERVICES	1,084,801.
REHAB ALLIANCE, 22995 MILL CREEK DRIVE STE. A, LAGUNA HILLS, CA 92653	REHABILITATION SERVICES	998,830.
ASSURANCE HOME CARE SERVICES 2230 W. CHAPMAN AVE., ORANGE, CA 92868	NURSE REGISTRY	875,248.
OLSON INC., 4445 EASTGATE MALL, STE. 200, SAN DIEGO, CA 92121	CONSTRUCTION SERVICES	706,714.

2 Total number of independent contractors (including but not limited to those listed above) who received more than \$100,000 of compensation from the organization **56**

SEE PART VII, SECTION A CONTINUATION SHEETS

Part VII Section A. Officers, Directors, Trustees, Key Employees, and Highest Compensated Employees (continued)

Table with 6 main columns: (A) Name and title, (B) Average hours per week, (C) Position (Individual trustee or director, Institutional trustee, Officer, Key employee, Highest compensated employee, Former), (D) Reportable compensation from the organization, (E) Reportable compensation from related organizations, (F) Estimated amount of other compensation. Includes entries for Rev. Michelle Holmes, William Battison, Alan Griffith, Sharon Roth, and William Hulings.

Total to Part VII, Section A, line 1c ..... 169,000.

**Part VIII Statement of Revenue**

Check if Schedule O contains a response or note to any line in this Part VIII

			(A)	(B)	(C)	(D)	
			Total revenue	Related or exempt function revenue	Unrelated business revenue	Revenue excluded from tax under sections 512 - 514	
Contributions, Gifts, Grants and Other Similar Amounts	<b>1 a</b> Federated campaigns	<b>1a</b>					
	<b>b</b> Membership dues	<b>1b</b>					
	<b>c</b> Fundraising events	<b>1c</b>					
	<b>d</b> Related organizations	<b>1d</b>	436,735.				
	<b>e</b> Government grants (contributions)	<b>1e</b>	2,872,844.				
	<b>f</b> All other contributions, gifts, grants, and similar amounts not included above	<b>1f</b>	99,060.				
	<b>g</b> Noncash contributions included in lines 1a-1f	<b>1g</b>	\$				
	<b>h Total.</b> Add lines 1a-1f			3,408,639.			
Program Service Revenue	<b>2 a</b> RESIDENT SERVICE FEE	<b>Business Code</b>	623000	86,740,568.	86,740,568.		
	<b>b</b> AMORTIZATION OF ENTRANCE FEE		623000	15,979,125.	15,979,125.		
	<b>c</b> MANAGEMENT FEE REV.		623000	300,000.	300,000.		
	<b>d</b>						
	<b>e</b>						
	<b>f</b> All other program service revenue						
	<b>g Total.</b> Add lines 2a-2f			103,019,693.			
Other Revenue	<b>3</b> Investment income (including dividends, interest, and other similar amounts)			2,934,859.		2,934,859.	
	<b>4</b> Income from investment of tax-exempt bond proceeds						
	<b>5</b> Royalties						
	<b>6 a</b> Gross rents	<b>6a</b>	(i) Real				
			(ii) Personal				
	<b>b</b> Less: rental expenses	<b>6b</b>					
	<b>c</b> Rental income or (loss)	<b>6c</b>					
	<b>d</b> Net rental income or (loss)						
	<b>7 a</b> Gross amount from sales of assets other than inventory	<b>7a</b>	(i) Securities	48,477,507.	4,925.		
			(ii) Other				
	<b>b</b> Less: cost or other basis and sales expenses	<b>7b</b>	46,536,040.	0.			
<b>c</b> Gain or (loss)	<b>7c</b>	1,941,467.	4,925.				
<b>d</b> Net gain or (loss)			1,946,392.		1,946,392.		
<b>8 a</b> Gross income from fundraising events (not including \$ _____ of contributions reported on line 1c). See Part IV, line 18	<b>8a</b>						
<b>b</b> Less: direct expenses	<b>8b</b>						
<b>c</b> Net income or (loss) from fundraising events							
<b>9 a</b> Gross income from gaming activities. See Part IV, line 19	<b>9a</b>						
<b>b</b> Less: direct expenses	<b>9b</b>						
<b>c</b> Net income or (loss) from gaming activities							
<b>10 a</b> Gross sales of inventory, less returns and allowances	<b>10a</b>						
<b>b</b> Less: cost of goods sold	<b>10b</b>						
<b>c</b> Net income or (loss) from sales of inventory							
Miscellaneous Revenue	<b>11 a</b> RESIDENT UPGRADES	<b>Business Code</b>	900099	423,519.		423,519.	
	<b>b</b> EMPLOYEE/GUEST MEALS		900099	223,883.		223,883.	
	<b>c</b> INCENTIVES		900099	121,000.		121,000.	
	<b>d</b> All other revenue		900099	412,099.		412,099.	
	<b>e Total.</b> Add lines 11a-11d			1,180,501.			
<b>12 Total revenue.</b> See instructions			112,490,084.	103,019,693.	0.	6,061,752.	

**Part IX Statement of Functional Expenses**

Section 501(c)(3) and 501(c)(4) organizations must complete all columns. All other organizations must complete column (A).

Check if Schedule O contains a response or note to any line in this Part IX

Do not include amounts reported on lines 6b, 7b, 8b, 9b, and 10b of Part VIII.	(A) Total expenses	(B) Program service expenses	(C) Management and general expenses	(D) Fundraising expenses
1 Grants and other assistance to domestic organizations and domestic governments. See Part IV, line 21 ...	1,436,168.	1,436,168.		
2 Grants and other assistance to domestic individuals. See Part IV, line 22 .....				
3 Grants and other assistance to foreign organizations, foreign governments, and foreign individuals. See Part IV, lines 15 and 16 .....				
4 Benefits paid to or for members .....				
5 Compensation of current officers, directors, trustees, and key employees .....	3,499,726.	2,940,886.	558,840.	
6 Compensation not included above to disqualified persons (as defined under section 4958(f)(1)) and persons described in section 4958(c)(3)(B) .....				
7 Other salaries and wages .....	45,480,558.	38,218,175.	7,262,383.	
8 Pension plan accruals and contributions (include section 401(k) and 403(b) employer contributions)	2,137,624.	1,796,286.	341,338.	
9 Other employee benefits .....	5,728,868.	4,814,077.	914,791.	
10 Payroll taxes .....	6,034,935.	5,071,270.	963,665.	
11 Fees for services (nonemployees):				
a Management .....				
b Legal .....	56,720.		56,720.	
c Accounting .....	185,857.		185,857.	
d Lobbying .....	10,939.		10,939.	
e Professional fundraising services. See Part IV, line 17				
f Investment management fees .....	501,682.		501,682.	
g Other. (If line 11g amount exceeds 10% of line 25, column (A) amount, list line 11g expenses on Sch O.)	5,753,789.	4,973,683.	780,106.	
12 Advertising and promotion .....	1,514,263.	1,514,263.		
13 Office expenses .....	862,972.	734,708.	128,264.	
14 Information technology .....				
15 Royalties .....				
16 Occupancy .....	8,026,387.	7,957,979.	68,408.	
17 Travel .....	399,483.	268,749.	130,734.	
18 Payments of travel or entertainment expenses for any federal, state, or local public officials ...				
19 Conferences, conventions, and meetings .....	59,235.	33,776.	25,459.	
20 Interest .....				
21 Payments to affiliates .....				
22 Depreciation, depletion, and amortization .....	17,535,926.	16,860,914.	675,012.	
23 Insurance .....	1,413,676.	1,413,676.		
24 Other expenses. Itemize expenses not covered above (List miscellaneous expenses on line 24e. If line 24e amount exceeds 10% of line 25, column (A) amount, list line 24e expenses on Schedule O.)				
a <b>SUPPLIES</b>	8,822,316.	8,518,679.	303,637.	
b <b>ANCILLARY SERVICES EXP</b>	2,854,301.	2,854,301.		
c <b>REPAIRS &amp; MAINTENANCE</b>	1,911,982.	1,902,494.	9,488.	
d <b>BAD DEBT EXPENSE</b>	578,151.		578,151.	
e All other expenses	2,110,620.	846,059.	1,264,561.	
<b>25 Total functional expenses.</b> Add lines 1 through 24e	<b>116,916,178.</b>	<b>102,156,143.</b>	<b>14,760,035.</b>	<b>0.</b>
26 <b>Joint costs.</b> Complete this line only if the organization reported in column (B) joint costs from a combined educational campaign and fundraising solicitation.				

Check here  if following SOP 98-2 (ASC 958-720)



**Part X Balance Sheet**

Check if Schedule O contains a response or note to any line in this Part X

		(A)		(B)	
		Beginning of year		End of year	
<b>Assets</b>	<b>1</b> Cash - non-interest-bearing .....	5,705,383.	<b>1</b>	1,787,439.	
	<b>2</b> Savings and temporary cash investments .....	19,024,275.	<b>2</b>	19,041,352.	
	<b>3</b> Pledges and grants receivable, net .....		<b>3</b>		
	<b>4</b> Accounts receivable, net .....	7,924,941.	<b>4</b>	8,697,666.	
	<b>5</b> Loans and other receivables from any current or former officer, director, trustee, key employee, creator or founder, substantial contributor, or 35% controlled entity or family member of any of these persons .....		<b>5</b>		
	<b>6</b> Loans and other receivables from other disqualified persons (as defined under section 4958(f)(1)), and persons described in section 4958(c)(3)(B) .....		<b>6</b>		
	<b>7</b> Notes and loans receivable, net .....		<b>7</b>		
	<b>8</b> Inventories for sale or use .....	274,909.	<b>8</b>	274,909.	
	<b>9</b> Prepaid expenses and deferred charges .....	1,028,209.	<b>9</b>	1,074,818.	
	<b>10a</b> Land, buildings, and equipment: cost or other basis. Complete Part VI of Schedule D .....	<b>10a</b> 343,828,185.			
	<b>b</b> Less: accumulated depreciation .....	<b>10b</b> 180,073,868.	168,739,540.	<b>10c</b>	163,754,317.
	<b>11</b> Investments - publicly traded securities .....	87,748,456.	<b>11</b>	98,966,433.	
	<b>12</b> Investments - other securities. See Part IV, line 11 .....		<b>12</b>		
	<b>13</b> Investments - program-related. See Part IV, line 11 .....		<b>13</b>		
	<b>14</b> Intangible assets .....		<b>14</b>		
	<b>15</b> Other assets. See Part IV, line 11 .....	1,313,953.	<b>15</b>	3,040,392.	
<b>16 Total assets.</b> Add lines 1 through 15 (must equal line 33) .....	291,759,666.	<b>16</b>	296,637,326.		
<b>Liabilities</b>	<b>17</b> Accounts payable and accrued expenses .....	14,734,183.	<b>17</b>	17,549,867.	
	<b>18</b> Grants payable .....		<b>18</b>		
	<b>19</b> Deferred revenue .....		<b>19</b>		
	<b>20</b> Tax-exempt bond liabilities .....	111,135,012.	<b>20</b>	114,232,230.	
	<b>21</b> Escrow or custodial account liability. Complete Part IV of Schedule D .....		<b>21</b>		
	<b>22</b> Loans and other payables to any current or former officer, director, trustee, key employee, creator or founder, substantial contributor, or 35% controlled entity or family member of any of these persons .....		<b>22</b>		
	<b>23</b> Secured mortgages and notes payable to unrelated third parties .....		<b>23</b>		
	<b>24</b> Unsecured notes and loans payable to unrelated third parties .....		<b>24</b>	150,001.	
	<b>25</b> Other liabilities (including federal income tax, payables to related third parties, and other liabilities not included on lines 17-24). Complete Part X of Schedule D .....	149,618,147.	<b>25</b>	144,832,045.	
	<b>26 Total liabilities.</b> Add lines 17 through 25 .....	275,487,342.	<b>26</b>	276,764,143.	
<b>Net Assets or Fund Balances</b>	<b>Organizations that follow FASB ASC 958, check here</b> <input checked="" type="checkbox"/> <b>and complete lines 27, 28, 32, and 33.</b>				
	<b>27</b> Net assets without donor restrictions .....	16,272,324.	<b>27</b>	19,873,183.	
	<b>28</b> Net assets with donor restrictions .....		<b>28</b>		
	<b>Organizations that do not follow FASB ASC 958, check here</b> <input type="checkbox"/> <b>and complete lines 29 through 33.</b>				
	<b>29</b> Capital stock or trust principal, or current funds .....		<b>29</b>		
	<b>30</b> Paid-in or capital surplus, or land, building, or equipment fund .....		<b>30</b>		
	<b>31</b> Retained earnings, endowment, accumulated income, or other funds .....		<b>31</b>		
	<b>32</b> Total net assets or fund balances .....	16,272,324.	<b>32</b>	19,873,183.	
	<b>33</b> Total liabilities and net assets/fund balances .....	291,759,666.	<b>33</b>	296,637,326.	

**Part XI Reconciliation of Net Assets**

Check if Schedule O contains a response or note to any line in this Part XI

<b>1</b>	Total revenue (must equal Part VIII, column (A), line 12)	<b>1</b>	112,490,084.
<b>2</b>	Total expenses (must equal Part IX, column (A), line 25)	<b>2</b>	116,916,178.
<b>3</b>	Revenue less expenses. Subtract line 2 from line 1	<b>3</b>	-4,426,094.
<b>4</b>	Net assets or fund balances at beginning of year (must equal Part X, line 32, column (A))	<b>4</b>	16,272,324.
<b>5</b>	Net unrealized gains (losses) on investments	<b>5</b>	8,848,293.
<b>6</b>	Donated services and use of facilities	<b>6</b>	
<b>7</b>	Investment expenses	<b>7</b>	
<b>8</b>	Prior period adjustments	<b>8</b>	
<b>9</b>	Other changes in net assets or fund balances (explain on Schedule O)	<b>9</b>	-821,340.
<b>10</b>	Net assets or fund balances at end of year. Combine lines 3 through 9 (must equal Part X, line 32, column (B))	<b>10</b>	19,873,183.

**Part XII Financial Statements and Reporting**

Check if Schedule O contains a response or note to any line in this Part XII

		Yes	No
<b>1</b>	Accounting method used to prepare the Form 990: <input type="checkbox"/> Cash <input checked="" type="checkbox"/> Accrual <input type="checkbox"/> Other _____ If the organization changed its method of accounting from a prior year or checked "Other," explain in Schedule O.		
<b>2a</b>	Were the organization's financial statements compiled or reviewed by an independent accountant? _____ If "Yes," check a box below to indicate whether the financial statements for the year were compiled or reviewed on a separate basis, consolidated basis, or both: <input type="checkbox"/> Separate basis <input checked="" type="checkbox"/> Consolidated basis <input type="checkbox"/> Both consolidated and separate basis	X	
<b>b</b>	Were the organization's financial statements audited by an independent accountant? _____ If "Yes," check a box below to indicate whether the financial statements for the year were audited on a separate basis, consolidated basis, or both: <input type="checkbox"/> Separate basis <input checked="" type="checkbox"/> Consolidated basis <input type="checkbox"/> Both consolidated and separate basis	X	
<b>c</b>	If "Yes" to line 2a or 2b, does the organization have a committee that assumes responsibility for oversight of the audit, review, or compilation of its financial statements and selection of an independent accountant? _____ If the organization changed either its oversight process or selection process during the tax year, explain on Schedule O.	X	
<b>3a</b>	As a result of a federal award, was the organization required to undergo an audit or audits as set forth in the Single Audit Act and OMB Circular A-133? _____	X	
<b>b</b>	If "Yes," did the organization undergo the required audit or audits? If the organization did not undergo the required audit or audits, explain why on Schedule O and describe any steps taken to undergo such audits _____	X	

**SCHEDULE A**  
**(Form 990 or 990-EZ)**

Department of the Treasury  
Internal Revenue Service

**Public Charity Status and Public Support**

Complete if the organization is a section 501(c)(3) organization or a section 4947(a)(1) nonexempt charitable trust.

▶ Attach to Form 990 or Form 990-EZ.

▶ Go to [www.irs.gov/Form990](http://www.irs.gov/Form990) for instructions and the latest information.

OMB No. 1545-0047

**2020**

**Open to Public Inspection**

Name of the organization

**HUMANGOOD SOCIAL**

Employer identification number

**95-1894293**

**Part I Reason for Public Charity Status.** (All organizations must complete this part.) See instructions.

The organization is not a private foundation because it is: (For lines 1 through 12, check only one box.)

- 1  A church, convention of churches, or association of churches described in **section 170(b)(1)(A)(i).**
- 2  A school described in **section 170(b)(1)(A)(ii).** (Attach Schedule E (Form 990 or 990-EZ).)
- 3  A hospital or a cooperative hospital service organization described in **section 170(b)(1)(A)(iii).**
- 4  A medical research organization operated in conjunction with a hospital described in **section 170(b)(1)(A)(iii).** Enter the hospital's name, city, and state: \_\_\_\_\_
- 5  An organization operated for the benefit of a college or university owned or operated by a governmental unit described in **section 170(b)(1)(A)(iv).** (Complete Part II.)
- 6  A federal, state, or local government or governmental unit described in **section 170(b)(1)(A)(v).**
- 7  An organization that normally receives a substantial part of its support from a governmental unit or from the general public described in **section 170(b)(1)(A)(vi).** (Complete Part II.)
- 8  A community trust described in **section 170(b)(1)(A)(vi).** (Complete Part II.)
- 9  An agricultural research organization described in **section 170(b)(1)(A)(ix)** operated in conjunction with a land-grant college or university or a non-land-grant college of agriculture (see instructions). Enter the name, city, and state of the college or university: \_\_\_\_\_
- 10  An organization that normally receives (1) more than 33 1/3% of its support from contributions, membership fees, and gross receipts from activities related to its exempt functions, subject to certain exceptions; and (2) no more than 33 1/3% of its support from gross investment income and unrelated business taxable income (less section 511 tax) from businesses acquired by the organization after June 30, 1975. See **section 509(a)(2).** (Complete Part III.)
- 11  An organization organized and operated exclusively to test for public safety. See **section 509(a)(4).**
- 12  An organization organized and operated exclusively for the benefit of, to perform the functions of, or to carry out the purposes of one or more publicly supported organizations described in **section 509(a)(1)** or **section 509(a)(2).** See **section 509(a)(3).** Check the box in lines 12a through 12d that describes the type of supporting organization and complete lines 12e, 12f, and 12g.
  - a  **Type I.** A supporting organization operated, supervised, or controlled by its supported organization(s), typically by giving the supported organization(s) the power to regularly appoint or elect a majority of the directors or trustees of the supporting organization. **You must complete Part IV, Sections A and B.**
  - b  **Type II.** A supporting organization supervised or controlled in connection with its supported organization(s), by having control or management of the supporting organization vested in the same persons that control or manage the supported organization(s). **You must complete Part IV, Sections A and C.**
  - c  **Type III functionally integrated.** A supporting organization operated in connection with, and functionally integrated with, its supported organization(s) (see instructions). **You must complete Part IV, Sections A, D, and E.**
  - d  **Type III non-functionally integrated.** A supporting organization operated in connection with its supported organization(s) that is not functionally integrated. The organization generally must satisfy a distribution requirement and an attentiveness requirement (see instructions). **You must complete Part IV, Sections A and D, and Part V.**
  - e  Check this box if the organization received a written determination from the IRS that it is a Type I, Type II, Type III functionally integrated, or Type III non-functionally integrated supporting organization.
  - f Enter the number of supported organizations .....
  - g Provide the following information about the supported organization(s).

(i) Name of supported organization	(ii) EIN	(iii) Type of organization (described on lines 1-10 above (see instructions))	(iv) Is the organization listed in your governing document?		(v) Amount of monetary support (see instructions)	(vi) Amount of other support (see instructions)
			Yes	No		
<b>Total</b>						

**Part II Support Schedule for Organizations Described in Sections 170(b)(1)(A)(iv) and 170(b)(1)(A)(vi)**

(Complete only if you checked the box on line 5, 7, or 8 of Part I or if the organization failed to qualify under Part III. If the organization fails to qualify under the tests listed below, please complete Part III.)

**Section A. Public Support**

Calendar year (or fiscal year beginning in) ►	(a) 2016	(b) 2017	(c) 2018	(d) 2019	(e) 2020	(f) Total
<b>1</b> Gifts, grants, contributions, and membership fees received. (Do not include any "unusual grants.") .....						
<b>2</b> Tax revenues levied for the organization's benefit and either paid to or expended on its behalf .....						
<b>3</b> The value of services or facilities furnished by a governmental unit to the organization without charge .....						
<b>4 Total.</b> Add lines 1 through 3 .....						
<b>5</b> The portion of total contributions by each person (other than a governmental unit or publicly supported organization) included on line 1 that exceeds 2% of the amount shown on line 11, column (f) .....						
<b>6 Public support.</b> Subtract line 5 from line 4.						

**Section B. Total Support**

Calendar year (or fiscal year beginning in) ►	(a) 2016	(b) 2017	(c) 2018	(d) 2019	(e) 2020	(f) Total
<b>7</b> Amounts from line 4 .....						
<b>8</b> Gross income from interest, dividends, payments received on securities loans, rents, royalties, and income from similar sources .....						
<b>9</b> Net income from unrelated business activities, whether or not the business is regularly carried on .....						
<b>10</b> Other income. Do not include gain or loss from the sale of capital assets (Explain in Part VI.) .....						
<b>11 Total support.</b> Add lines 7 through 10						
<b>12</b> Gross receipts from related activities, etc. (see instructions) .....					12	
<b>13 First 5 years.</b> If the Form 990 is for the organization's first, second, third, fourth, or fifth tax year as a section 501(c)(3) organization, check this box and <b>stop here</b> .....						<input type="checkbox"/>

**Section C. Computation of Public Support Percentage**

<b>14</b> Public support percentage for 2020 (line 6, column (f), divided by line 11, column (f)) .....	14	%
<b>15</b> Public support percentage from 2019 Schedule A, Part II, line 14 .....	15	%
<b>16a 33 1/3% support test - 2020.</b> If the organization did not check the box on line 13, and line 14 is 33 1/3% or more, check this box and <b>stop here.</b> The organization qualifies as a publicly supported organization .....		<input type="checkbox"/>
<b>b 33 1/3% support test - 2019.</b> If the organization did not check a box on line 13 or 16a, and line 15 is 33 1/3% or more, check this box and <b>stop here.</b> The organization qualifies as a publicly supported organization .....		<input type="checkbox"/>
<b>17a 10% -facts-and-circumstances test - 2020.</b> If the organization did not check a box on line 13, 16a, or 16b, and line 14 is 10% or more, and if the organization meets the facts-and-circumstances test, check this box and <b>stop here.</b> Explain in Part VI how the organization meets the facts-and-circumstances test. The organization qualifies as a publicly supported organization .....		<input type="checkbox"/>
<b>b 10% -facts-and-circumstances test - 2019.</b> If the organization did not check a box on line 13, 16a, 16b, or 17a, and line 15 is 10% or more, and if the organization meets the facts-and-circumstances test, check this box and <b>stop here.</b> Explain in Part VI how the organization meets the facts-and-circumstances test. The organization qualifies as a publicly supported organization .....		<input type="checkbox"/>
<b>18 Private foundation.</b> If the organization did not check a box on line 13, 16a, 16b, 17a, or 17b, check this box and see instructions .....		<input type="checkbox"/>

**Part III Support Schedule for Organizations Described in Section 509(a)(2)**

(Complete only if you checked the box on line 10 of Part I or if the organization failed to qualify under Part II. If the organization fails to qualify under the tests listed below, please complete Part II.)

**Section A. Public Support**

Calendar year (or fiscal year beginning in) ►	(a) 2016	(b) 2017	(c) 2018	(d) 2019	(e) 2020	(f) Total
<b>1</b> Gifts, grants, contributions, and membership fees received. (Do not include any "unusual grants.") .....	1199939.	1067063.	38295483.	536,824.	3408639.	44507948.
<b>2</b> Gross receipts from admissions, merchandise sold or services performed, or facilities furnished in any activity that is related to the organization's tax-exempt purpose .....	69891600.	59095609.	80781075.	94360057.	103019693.	407148034.
<b>3</b> Gross receipts from activities that are not an unrelated trade or business under section 513 .....						
<b>4</b> Tax revenues levied for the organization's benefit and either paid to or expended on its behalf .....						
<b>5</b> The value of services or facilities furnished by a governmental unit to the organization without charge .....						
<b>6 Total.</b> Add lines 1 through 5 .....	71091539.	60162672.	119076558.	94896881.	106428332.	451655982.
<b>7a</b> Amounts included on lines 1, 2, and 3 received from disqualified persons .....						0.
<b>b</b> Amounts included on lines 2 and 3 received from other than disqualified persons that exceed the greater of \$5,000 or 1% of the amount on line 13 for the year .....						0.
<b>c</b> Add lines 7a and 7b .....						0.
<b>8 Public support.</b> (Subtract line 7c from line 6.)						451655982.

**Section B. Total Support**

Calendar year (or fiscal year beginning in) ►	(a) 2016	(b) 2017	(c) 2018	(d) 2019	(e) 2020	(f) Total
<b>9</b> Amounts from line 6 .....	71091539.	60162672.	119076558.	94896881.	106428332.	451655982.
<b>10a</b> Gross income from interest, dividends, payments received on securities loans, rents, royalties, and income from similar sources .....	2788861.	854,939.	4819714.	3751996.	2934859.	15150369.
<b>b</b> Unrelated business taxable income (less section 511 taxes) from businesses acquired after June 30, 1975 .....						
<b>c</b> Add lines 10a and 10b .....	2788861.	854,939.	4819714.	3751996.	2934859.	15150369.
<b>11</b> Net income from unrelated business activities not included in line 10b, whether or not the business is regularly carried on .....						
<b>12</b> Other income. Do not include gain or loss from the sale of capital assets (Explain in Part VI.) .....	10539973.	1096826.	1289231.	2184737.	1180501.	16291268.
<b>13 Total support.</b> (Add lines 9, 10c, 11, and 12.)	84420373.	62114437.	125185503.	100833614.	110543692.	483097619.

**14 First 5 years.** If the Form 990 is for the organization's first, second, third, fourth, or fifth tax year as a section 501(c)(3) organization, check this box and **stop here**

**Section C. Computation of Public Support Percentage**

<b>15</b> Public support percentage for 2020 (line 8, column (f), divided by line 13, column (f)) .....	15	93.49 %
<b>16</b> Public support percentage from 2019 Schedule A, Part III, line 15 .....	16	91.04 %

**Section D. Computation of Investment Income Percentage**

<b>17</b> Investment income percentage for 2020 (line 10c, column (f), divided by line 13, column (f)) .....	17	3.14 %
<b>18</b> Investment income percentage from 2019 Schedule A, Part III, line 17 .....	18	3.30 %

**19a 33 1/3% support tests - 2020.** If the organization did not check the box on line 14, and line 15 is more than 33 1/3%, and line 17 is not more than 33 1/3%, check this box and **stop here**. The organization qualifies as a publicly supported organization

**b 33 1/3% support tests - 2019.** If the organization did not check a box on line 14 or line 19a, and line 16 is more than 33 1/3%, and line 18 is not more than 33 1/3%, check this box and **stop here**. The organization qualifies as a publicly supported organization

**20 Private foundation.** If the organization did not check a box on line 14, 19a, or 19b, check this box and see instructions

**Part IV Supporting Organizations**

(Complete only if you checked a box in line 12 on Part I. If you checked box 12a, Part I, complete Sections A and B. If you checked box 12b, Part I, complete Sections A and C. If you checked box 12c, Part I, complete Sections A, D, and E. If you checked box 12d, Part I, complete Sections A and D, and complete Part V.)

**Section A. All Supporting Organizations**

	Yes	No
<b>1</b> Are all of the organization's supported organizations listed by name in the organization's governing documents? <i>If "No," describe in Part VI how the supported organizations are designated. If designated by class or purpose, describe the designation. If historic and continuing relationship, explain.</i>		
<b>2</b> Did the organization have any supported organization that does not have an IRS determination of status under section 509(a)(1) or (2)? <i>If "Yes," explain in Part VI how the organization determined that the supported organization was described in section 509(a)(1) or (2).</i>		
<b>3a</b> Did the organization have a supported organization described in section 501(c)(4), (5), or (6)? <i>If "Yes," answer lines 3b and 3c below.</i>		
<b>b</b> Did the organization confirm that each supported organization qualified under section 501(c)(4), (5), or (6) and satisfied the public support tests under section 509(a)(2)? <i>If "Yes," describe in Part VI when and how the organization made the determination.</i>		
<b>c</b> Did the organization ensure that all support to such organizations was used exclusively for section 170(c)(2)(B) purposes? <i>If "Yes," explain in Part VI what controls the organization put in place to ensure such use.</i>		
<b>4a</b> Was any supported organization not organized in the United States ("foreign supported organization")? <i>If "Yes," and if you checked box 12a or 12b in Part I, answer lines 4b and 4c below.</i>		
<b>b</b> Did the organization have ultimate control and discretion in deciding whether to make grants to the foreign supported organization? <i>If "Yes," describe in Part VI how the organization had such control and discretion despite being controlled or supervised by or in connection with its supported organizations.</i>		
<b>c</b> Did the organization support any foreign supported organization that does not have an IRS determination under sections 501(c)(3) and 509(a)(1) or (2)? <i>If "Yes," explain in Part VI what controls the organization used to ensure that all support to the foreign supported organization was used exclusively for section 170(c)(2)(B) purposes.</i>		
<b>5a</b> Did the organization add, substitute, or remove any supported organizations during the tax year? <i>If "Yes," answer lines 5b and 5c below (if applicable). Also, provide detail in Part VI, including (i) the names and EIN numbers of the supported organizations added, substituted, or removed; (ii) the reasons for each such action; (iii) the authority under the organization's organizing document authorizing such action; and (iv) how the action was accomplished (such as by amendment to the organizing document).</i>		
<b>b Type I or Type II only.</b> Was any added or substituted supported organization part of a class already designated in the organization's organizing document?		
<b>c Substitutions only.</b> Was the substitution the result of an event beyond the organization's control?		
<b>6</b> Did the organization provide support (whether in the form of grants or the provision of services or facilities) to anyone other than (i) its supported organizations, (ii) individuals that are part of the charitable class benefited by one or more of its supported organizations, or (iii) other supporting organizations that also support or benefit one or more of the filing organization's supported organizations? <i>If "Yes," provide detail in Part VI.</i>		
<b>7</b> Did the organization provide a grant, loan, compensation, or other similar payment to a substantial contributor (as defined in section 4958(c)(3)(C)), a family member of a substantial contributor, or a 35% controlled entity with regard to a substantial contributor? <i>If "Yes," complete Part I of Schedule L (Form 990 or 990-EZ).</i>		
<b>8</b> Did the organization make a loan to a disqualified person (as defined in section 4958) not described in line 7? <i>If "Yes," complete Part I of Schedule L (Form 990 or 990-EZ).</i>		
<b>9a</b> Was the organization controlled directly or indirectly at any time during the tax year by one or more disqualified persons, as defined in section 4946 (other than foundation managers and organizations described in section 509(a)(1) or (2))? <i>If "Yes," provide detail in Part VI.</i>		
<b>b</b> Did one or more disqualified persons (as defined in line 9a) hold a controlling interest in any entity in which the supporting organization had an interest? <i>If "Yes," provide detail in Part VI.</i>		
<b>c</b> Did a disqualified person (as defined in line 9a) have an ownership interest in, or derive any personal benefit from, assets in which the supporting organization also had an interest? <i>If "Yes," provide detail in Part VI.</i>		
<b>10a</b> Was the organization subject to the excess business holdings rules of section 4943 because of section 4943(f) (regarding certain Type II supporting organizations, and all Type III non-functionally integrated supporting organizations)? <i>If "Yes," answer line 10b below.</i>		
<b>b</b> Did the organization have any excess business holdings in the tax year? <i>(Use Schedule C, Form 4720, to determine whether the organization had excess business holdings.)</i>		

**Part IV Supporting Organizations** (continued)

	Yes	No
<b>11</b> Has the organization accepted a gift or contribution from any of the following persons?		
<b>a</b> A person who directly or indirectly controls, either alone or together with persons described in lines 11b and 11c below, the governing body of a supported organization?		
<b>11a</b>		
<b>b</b> A family member of a person described in line 11a above?		
<b>11b</b>		
<b>c</b> A 35% controlled entity of a person described in line 11a or 11b above? <i>If "Yes" to line 11a, 11b, or 11c, provide detail in Part VI.</i>		
<b>11c</b>		

**Section B. Type I Supporting Organizations**

	Yes	No
<b>1</b> Did the governing body, members of the governing body, officers acting in their official capacity, or membership of one or more supported organizations have the power to regularly appoint or elect at least a majority of the organization's officers, directors, or trustees at all times during the tax year? <i>If "No," describe in Part VI how the supported organization(s) effectively operated, supervised, or controlled the organization's activities. If the organization had more than one supported organization, describe how the powers to appoint and/or remove officers, directors, or trustees were allocated among the supported organizations and what conditions or restrictions, if any, applied to such powers during the tax year.</i>		
<b>1</b>		
<b>2</b> Did the organization operate for the benefit of any supported organization other than the supported organization(s) that operated, supervised, or controlled the supporting organization? <i>If "Yes," explain in Part VI how providing such benefit carried out the purposes of the supported organization(s) that operated, supervised, or controlled the supporting organization.</i>		
<b>2</b>		

**Section C. Type II Supporting Organizations**

	Yes	No
<b>1</b> Were a majority of the organization's directors or trustees during the tax year also a majority of the directors or trustees of each of the organization's supported organization(s)? <i>If "No," describe in Part VI how control or management of the supporting organization was vested in the same persons that controlled or managed the supported organization(s).</i>		
<b>1</b>		

**Section D. All Type III Supporting Organizations**

	Yes	No
<b>1</b> Did the organization provide to each of its supported organizations, by the last day of the fifth month of the organization's tax year, (i) a written notice describing the type and amount of support provided during the prior tax year, (ii) a copy of the Form 990 that was most recently filed as of the date of notification, and (iii) copies of the organization's governing documents in effect on the date of notification, to the extent not previously provided?		
<b>1</b>		
<b>2</b> Were any of the organization's officers, directors, or trustees either (i) appointed or elected by the supported organization(s) or (ii) serving on the governing body of a supported organization? <i>If "No," explain in Part VI how the organization maintained a close and continuous working relationship with the supported organization(s).</i>		
<b>2</b>		
<b>3</b> By reason of the relationship described in line 2, above, did the organization's supported organizations have a significant voice in the organization's investment policies and in directing the use of the organization's income or assets at all times during the tax year? <i>If "Yes," describe in Part VI the role the organization's supported organizations played in this regard.</i>		
<b>3</b>		

**Section E. Type III Functionally Integrated Supporting Organizations**

<b>1</b> Check the box next to the method that the organization used to satisfy the Integral Part Test during the year (see instructions).		
<b>a</b> <input type="checkbox"/> The organization satisfied the Activities Test. Complete line 2 below.		
<b>b</b> <input type="checkbox"/> The organization is the parent of each of its supported organizations. Complete line 3 below.		
<b>c</b> <input type="checkbox"/> The organization supported a governmental entity. Describe in Part VI how you supported a governmental entity (see instructions).		
<b>2</b> Activities Test. Answer lines 2a and 2b below.		
<b>a</b> Did substantially all of the organization's activities during the tax year directly further the exempt purposes of the supported organization(s) to which the organization was responsive? <i>If "Yes," then in Part VI identify those supported organizations and explain how these activities directly furthered their exempt purposes, how the organization was responsive to those supported organizations, and how the organization determined that these activities constituted substantially all of its activities.</i>	Yes	No
<b>2a</b>		
<b>b</b> Did the activities described in line 2a, above, constitute activities that, but for the organization's involvement, one or more of the organization's supported organization(s) would have been engaged in? <i>If "Yes," explain in Part VI the reasons for the organization's position that its supported organization(s) would have engaged in these activities but for the organization's involvement.</i>		
<b>2b</b>		
<b>3</b> Parent of Supported Organizations. Answer lines 3a and 3b below.		
<b>a</b> Did the organization have the power to regularly appoint or elect a majority of the officers, directors, or trustees of each of the supported organizations? <i>If "Yes" or "No" provide details in Part VI.</i>		
<b>3a</b>		
<b>b</b> Did the organization exercise a substantial degree of direction over the policies, programs, and activities of each of its supported organizations? <i>If "Yes," describe in Part VI the role played by the organization in this regard.</i>		
<b>3b</b>		

**Part V Type III Non-Functionally Integrated 509(a)(3) Supporting Organizations**

- 1  Check here if the organization satisfied the Integral Part Test as a qualifying trust on Nov. 20, 1970 ( *explain in Part VI*). See instructions.  
All other Type III non-functionally integrated supporting organizations must complete Sections A through E.

Section A - Adjusted Net Income		(A) Prior Year	(B) Current Year (optional)
1	Net short-term capital gain	1	
2	Recoveries of prior-year distributions	2	
3	Other gross income (see instructions)	3	
4	Add lines 1 through 3.	4	
5	Depreciation and depletion	5	
6	Portion of operating expenses paid or incurred for production or collection of gross income or for management, conservation, or maintenance of property held for production of income (see instructions)	6	
7	Other expenses (see instructions)	7	
8	<b>Adjusted Net Income</b> (subtract lines 5, 6, and 7 from line 4)	8	

Section B - Minimum Asset Amount		(A) Prior Year	(B) Current Year (optional)
1	Aggregate fair market value of all non-exempt-use assets (see instructions for short tax year or assets held for part of year):		
a	Average monthly value of securities	1a	
b	Average monthly cash balances	1b	
c	Fair market value of other non-exempt-use assets	1c	
d	<b>Total</b> (add lines 1a, 1b, and 1c)	1d	
e	<b>Discount</b> claimed for blockage or other factors ( <i>explain in detail in Part VI</i> ):		
2	Acquisition indebtedness applicable to non-exempt-use assets	2	
3	Subtract line 2 from line 1d.	3	
4	Cash deemed held for exempt use. Enter 0.015 of line 3 (for greater amount, see instructions).	4	
5	Net value of non-exempt-use assets (subtract line 4 from line 3)	5	
6	Multiply line 5 by 0.035.	6	
7	Recoveries of prior-year distributions	7	
8	<b>Minimum Asset Amount</b> (add line 7 to line 6)	8	

Section C - Distributable Amount			Current Year
1	Adjusted net income for prior year (from Section A, line 8, column A)	1	
2	Enter 0.85 of line 1.	2	
3	Minimum asset amount for prior year (from Section B, line 8, column A)	3	
4	Enter greater of line 2 or line 3.	4	
5	Income tax imposed in prior year	5	
6	<b>Distributable Amount.</b> Subtract line 5 from line 4, unless subject to emergency temporary reduction (see instructions).	6	
7	<input type="checkbox"/> Check here if the current year is the organization's first as a non-functionally integrated Type III supporting organization (see instructions).		



**Part V Type III Non-Functionally Integrated 509(a)(3) Supporting Organizations** (continued)

<b>Section D - Distributions</b>		<b>Current Year</b>
<b>1</b>	Amounts paid to supported organizations to accomplish exempt purposes	<b>1</b>
<b>2</b>	Amounts paid to perform activity that directly furthers exempt purposes of supported organizations, in excess of income from activity	<b>2</b>
<b>3</b>	Administrative expenses paid to accomplish exempt purposes of supported organizations	<b>3</b>
<b>4</b>	Amounts paid to acquire exempt-use assets	<b>4</b>
<b>5</b>	Qualified set-aside amounts (prior IRS approval required - <i>provide details in Part VI</i> )	<b>5</b>
<b>6</b>	Other distributions ( <i>describe in Part VI</i> ). See instructions.	<b>6</b>
<b>7</b>	<b>Total annual distributions.</b> Add lines 1 through 6.	<b>7</b>
<b>8</b>	Distributions to attentive supported organizations to which the organization is responsive ( <i>provide details in Part VI</i> ). See instructions.	<b>8</b>
<b>9</b>	Distributable amount for 2020 from Section C, line 6	<b>9</b>
<b>10</b>	Line 8 amount divided by line 9 amount	<b>10</b>

<b>Section E - Distribution Allocations</b> (see instructions)	<b>(i) Excess Distributions</b>	<b>(ii) Underdistributions Pre-2020</b>	<b>(iii) Distributable Amount for 2020</b>
<b>1</b> Distributable amount for 2020 from Section C, line 6			
<b>2</b> Underdistributions, if any, for years prior to 2020 (reasonable cause required - <i>explain in Part VI</i> ). See instructions.			
<b>3</b> Excess distributions carryover, if any, to 2020			
<b>a</b> From 2015			
<b>b</b> From 2016			
<b>c</b> From 2017			
<b>d</b> From 2018			
<b>e</b> From 2019			
<b>f</b> <b>Total</b> of lines 3a through 3e			
<b>g</b> Applied to underdistributions of prior years			
<b>h</b> Applied to 2020 distributable amount			
<b>i</b> Carryover from 2015 not applied (see instructions)			
<b>j</b> Remainder. Subtract lines 3g, 3h, and 3i from line 3f.			
<b>4</b> Distributions for 2020 from Section D, line 7: \$			
<b>a</b> Applied to underdistributions of prior years			
<b>b</b> Applied to 2020 distributable amount			
<b>c</b> Remainder. Subtract lines 4a and 4b from line 4.			
<b>5</b> Remaining underdistributions for years prior to 2020, if any. Subtract lines 3g and 4a from line 2. For result greater than zero, <i>explain in Part VI</i> . See instructions.			
<b>6</b> Remaining underdistributions for 2020. Subtract lines 3h and 4b from line 1. For result greater than zero, <i>explain in Part VI</i> . See instructions.			
<b>7</b> <b>Excess distributions carryover to 2021.</b> Add lines 3j and 4c.			
<b>8</b> Breakdown of line 7:			
<b>a</b> Excess from 2016			
<b>b</b> Excess from 2017			
<b>c</b> Excess from 2018			
<b>d</b> Excess from 2019			
<b>e</b> Excess from 2020			

**Part VI** **Supplemental Information.** Provide the explanations required by Part II, line 10; Part II, line 17a or 17b; Part III, line 12; Part IV, Section A, lines 1, 2, 3b, 3c, 4b, 4c, 5a, 6, 9a, 9b, 9c, 11a, 11b, and 11c; Part IV, Section B, lines 1 and 2; Part IV, Section C, line 1; Part IV, Section D, lines 2 and 3; Part IV, Section E, lines 1c, 2a, 2b, 3a, and 3b; Part V, line 1; Part V, Section B, line 1e; Part V, Section D, lines 5, 6, and 8; and Part V, Section E, lines 2, 5, and 6. Also complete this part for any additional information.  
(See instructions.)

**SCHEDULE A, PART III, LINE 12, EXPLANATION FOR OTHER INCOME:**

**OTHER INCOME**

2016 AMOUNT: \$ 10,539,973.

2017 AMOUNT: \$ 1,096,826.

2018 AMOUNT: \$ 1,289,231.

2019 AMOUNT: \$ 2,184,737.

2020 AMOUNT: \$ 1,180,501.

Schedule B

(Form 990, 990-EZ, or 990-PF)

Department of the Treasury Internal Revenue Service

Schedule of Contributors

Attach to Form 990, Form 990-EZ, or Form 990-PF. Go to www.irs.gov/Form990 for the latest information.

OMB No. 1545-0047

2020

Name of the organization

HUMANGOOD SOCAL

Employer identification number

95-1894293

Organization type (check one):

Filers of:

Section:

Form 990 or 990-EZ

[X] 501(c)( 3 ) (enter number) organization

[ ] 4947(a)(1) nonexempt charitable trust not treated as a private foundation

[ ] 527 political organization

Form 990-PF

[ ] 501(c)(3) exempt private foundation

[ ] 4947(a)(1) nonexempt charitable trust treated as a private foundation

[ ] 501(c)(3) taxable private foundation

Check if your organization is covered by the General Rule or a Special Rule.

Note: Only a section 501(c)(7), (8), or (10) organization can check boxes for both the General Rule and a Special Rule. See instructions.

General Rule

[X] For an organization filing Form 990, 990-EZ, or 990-PF that received, during the year, contributions totaling \$5,000 or more (in money or property) from any one contributor. Complete Parts I and II. See instructions for determining a contributor's total contributions.

Special Rules

[ ] For an organization described in section 501(c)(3) filing Form 990 or 990-EZ that met the 33 1/3% support test of the regulations under sections 509(a)(1) and 170(b)(1)(A)(vi), that checked Schedule A (Form 990 or 990-EZ), Part II, line 13, 16a, or 16b, and that received from any one contributor, during the year, total contributions of the greater of (1) \$5,000; or (2) 2% of the amount on (i) Form 990, Part VIII, line 1h; or (ii) Form 990-EZ, line 1. Complete Parts I and II.

[ ] For an organization described in section 501(c)(7), (8), or (10) filing Form 990 or 990-EZ that received from any one contributor, during the year, total contributions of more than \$1,000 exclusively for religious, charitable, scientific, literary, or educational purposes, or for the prevention of cruelty to children or animals. Complete Parts I (entering "N/A" in column (b) instead of the contributor name and address), II, and III.

[ ] For an organization described in section 501(c)(7), (8), or (10) filing Form 990 or 990-EZ that received from any one contributor, during the year, contributions exclusively for religious, charitable, etc., purposes, but no such contributions totaled more than \$1,000. If this box is checked, enter here the total contributions that were received during the year for an exclusively religious, charitable, etc., purpose. Don't complete any of the parts unless the General Rule applies to this organization because it received nonexclusively religious, charitable, etc., contributions totaling \$5,000 or more during the year ... \$

Caution: An organization that isn't covered by the General Rule and/or the Special Rules doesn't file Schedule B (Form 990, 990-EZ, or 990-PF), but it must answer "No" on Part IV, line 2, of its Form 990; or check the box on line H of its Form 990-EZ or on its Form 990-PF, Part I, line 2, to certify that it doesn't meet the filing requirements of Schedule B (Form 990, 990-EZ, or 990-PF).

Name of organization  <b>HUMANGOOD SOCIAL</b>	Employer identification number  <b>95-1894293</b>
---	---

**Part I Contributors** (see instructions). Use duplicate copies of Part I if additional space is needed.

(a) No.	(b) Name, address, and ZIP + 4	(c) Total contributions	(d) Type of contribution
<u>1</u>	 <hr/> <hr/> <hr/>	\$ <u>2,872,844.</u>	Person <input checked="" type="checkbox"/> Payroll <input type="checkbox"/> Noncash <input type="checkbox"/> (Complete Part II for noncash contributions.)
<u>2</u>	 <hr/> <hr/> <hr/>	\$ <u>264,911.</u>	Person <input checked="" type="checkbox"/> Payroll <input type="checkbox"/> Noncash <input type="checkbox"/> (Complete Part II for noncash contributions.)
<u>3</u>	 <hr/> <hr/> <hr/>	\$ <u>171,824.</u>	Person <input checked="" type="checkbox"/> Payroll <input type="checkbox"/> Noncash <input type="checkbox"/> (Complete Part II for noncash contributions.)
<u>4</u>	 <hr/> <hr/> <hr/>	\$ <u>76,252.</u>	Person <input checked="" type="checkbox"/> Payroll <input type="checkbox"/> Noncash <input type="checkbox"/> (Complete Part II for noncash contributions.)
<u>5</u>	 <hr/> <hr/> <hr/>	\$ <u>22,808.</u>	Person <input checked="" type="checkbox"/> Payroll <input type="checkbox"/> Noncash <input type="checkbox"/> (Complete Part II for noncash contributions.)
 <hr/> <hr/> <hr/>	 <hr/> <hr/> <hr/>	\$ _____	Person <input type="checkbox"/> Payroll <input type="checkbox"/> Noncash <input type="checkbox"/> (Complete Part II for noncash contributions.)

Name of organization  <b>HUMANGOOD SOCIAL</b>	Employer identification number  <b>95-1894293</b>
---	---

**Part II Noncash Property** (see instructions). Use duplicate copies of Part II if additional space is needed.

(a) No. from Part I	(b) Description of noncash property given	(c) FMV (or estimate) (See instructions.)	(d) Date received
	_____	\$ _____	_____
	_____	\$ _____	_____
	_____	\$ _____	_____
	_____	\$ _____	_____
	_____	\$ _____	_____
	_____	\$ _____	_____
	_____	\$ _____	_____
	_____	\$ _____	_____

Name of organization  <b>HUMANGOOD SOCIAL</b>	Employer identification number  <b>95-1894293</b>
---	---

**Part III** Exclusively religious, charitable, etc., contributions to organizations described in section 501(c)(7), (8), or (10) that total more than \$1,000 for the year from any one contributor. Complete columns (a) through (e) and the following line entry. For organizations completing Part III, enter the total of exclusively religious, charitable, etc., contributions of **\$1,000 or less** for the year. (Enter this info. once.) ▶ \$ \_\_\_\_\_  
Use duplicate copies of Part III if additional space is needed.

(a) No. from Part I	(b) Purpose of gift	(c) Use of gift	(d) Description of how gift is held
<b>(e) Transfer of gift</b>			
Transferee's name, address, and ZIP + 4		Relationship of transferor to transferee	
<b>(e) Transfer of gift</b>			
Transferee's name, address, and ZIP + 4		Relationship of transferor to transferee	
<b>(e) Transfer of gift</b>			
Transferee's name, address, and ZIP + 4		Relationship of transferor to transferee	
<b>(e) Transfer of gift</b>			
Transferee's name, address, and ZIP + 4		Relationship of transferor to transferee	
<b>(e) Transfer of gift</b>			
Transferee's name, address, and ZIP + 4		Relationship of transferor to transferee	

**SCHEDULE C**  
**(Form 990 or 990-EZ)**

**Political Campaign and Lobbying Activities**

OMB No. 1545-0047

**2020**

**Open to Public Inspection**

Department of the Treasury  
Internal Revenue Service

**For Organizations Exempt From Income Tax Under section 501(c) and section 527**  
▶ **Complete if the organization is described below. ▶ Attach to Form 990 or Form 990-EZ.**  
▶ **Go to [www.irs.gov/Form990](http://www.irs.gov/Form990) for instructions and the latest information.**

**If the organization answered "Yes," on Form 990, Part IV, line 3, or Form 990-EZ, Part V, line 46 (Political Campaign Activities), then**

- Section 501(c)(3) organizations: Complete Parts I-A and B. Do not complete Part I-C.
- Section 501(c) (other than section 501(c)(3)) organizations: Complete Parts I-A and C below. Do not complete Part I-B.
- Section 527 organizations: Complete Part I-A only.

**If the organization answered "Yes," on Form 990, Part IV, line 4, or Form 990-EZ, Part VI, line 47 (Lobbying Activities), then**

- Section 501(c)(3) organizations that have filed Form 5768 (election under section 501(h)): Complete Part II-A. Do not complete Part II-B.
- Section 501(c)(3) organizations that have NOT filed Form 5768 (election under section 501(h)): Complete Part II-B. Do not complete Part II-A.

**If the organization answered "Yes," on Form 990, Part IV, line 5 (Proxy Tax) (See separate instructions) or Form 990-EZ, Part V, line 35c (Proxy Tax) (See separate instructions), then**

- Section 501(c)(4), (5), or (6) organizations: Complete Part III.

Name of organization <b>HUMANGOOD SOCIAL</b>	Employer identification number <b>95-1894293</b>
---	---

**Part I-A Complete if the organization is exempt under section 501(c) or is a section 527 organization.**

- 1 Provide a description of the organization's direct and indirect political campaign activities in Part IV.
- 2 Political campaign activity expenditures ..... ▶ \$ \_\_\_\_\_
- 3 Volunteer hours for political campaign activities ..... \_\_\_\_\_

**Part I-B Complete if the organization is exempt under section 501(c)(3).**

- 1 Enter the amount of any excise tax incurred by the organization under section 4955 ..... ▶ \$ \_\_\_\_\_
- 2 Enter the amount of any excise tax incurred by organization managers under section 4955 ..... ▶ \$ \_\_\_\_\_
- 3 If the organization incurred a section 4955 tax, did it file Form 4720 for this year? .....  Yes  No
- 4a Was a correction made? .....  Yes  No
- b If "Yes," describe in Part IV.

**Part I-C Complete if the organization is exempt under section 501(c), except section 501(c)(3).**

- 1 Enter the amount directly expended by the filing organization for section 527 exempt function activities ..... ▶ \$ \_\_\_\_\_
- 2 Enter the amount of the filing organization's funds contributed to other organizations for section 527 exempt function activities ..... ▶ \$ \_\_\_\_\_
- 3 Total exempt function expenditures. Add lines 1 and 2. Enter here and on Form 1120-POL, line 17b ..... ▶ \$ \_\_\_\_\_
- 4 Did the filing organization file **Form 1120-POL** for this year? .....  Yes  No
- 5 Enter the names, addresses and employer identification number (EIN) of all section 527 political organizations to which the filing organization made payments. For each organization listed, enter the amount paid from the filing organization's funds. Also enter the amount of political contributions received that were promptly and directly delivered to a separate political organization, such as a separate segregated fund or a political action committee (PAC). If additional space is needed, provide information in Part IV.

(a) Name	(b) Address	(c) EIN	(d) Amount paid from filing organization's funds. If none, enter -0-.	(e) Amount of political contributions received and promptly and directly delivered to a separate political organization. If none, enter -0-.

**Part II-A Complete if the organization is exempt under section 501(c)(3) and filed Form 5768 (election under section 501(h)).**

- A** Check  if the filing organization belongs to an affiliated group (and list in Part IV each affiliated group member's name, address, EIN, expenses, and share of excess lobbying expenditures).
- B** Check  if the filing organization checked box A and "limited control" provisions apply.

<b>Limits on Lobbying Expenditures</b> (The term "expenditures" means amounts paid or incurred.)	(a) Filing organization's totals	(b) Affiliated group totals												
<b>1a</b> Total lobbying expenditures to influence public opinion (grassroots lobbying) .....														
<b>b</b> Total lobbying expenditures to influence a legislative body (direct lobbying) .....														
<b>c</b> Total lobbying expenditures (add lines 1a and 1b) .....														
<b>d</b> Other exempt purpose expenditures .....														
<b>e</b> Total exempt purpose expenditures (add lines 1c and 1d) .....														
<b>f</b> Lobbying nontaxable amount. Enter the amount from the following table in both columns.														
<table border="1" style="width:100%; border-collapse: collapse;"> <thead> <tr> <th style="width:35%;">If the amount on line 1e, column (a) or (b) is:</th> <th style="width:65%;">The lobbying nontaxable amount is:</th> </tr> </thead> <tbody> <tr> <td>Not over \$500,000</td> <td>20% of the amount on line 1e.</td> </tr> <tr> <td>Over \$500,000 but not over \$1,000,000</td> <td>\$100,000 plus 15% of the excess over \$500,000.</td> </tr> <tr> <td>Over \$1,000,000 but not over \$1,500,000</td> <td>\$175,000 plus 10% of the excess over \$1,000,000.</td> </tr> <tr> <td>Over \$1,500,000 but not over \$17,000,000</td> <td>\$225,000 plus 5% of the excess over \$1,500,000.</td> </tr> <tr> <td>Over \$17,000,000</td> <td>\$1,000,000.</td> </tr> </tbody> </table>	If the amount on line 1e, column (a) or (b) is:	The lobbying nontaxable amount is:	Not over \$500,000	20% of the amount on line 1e.	Over \$500,000 but not over \$1,000,000	\$100,000 plus 15% of the excess over \$500,000.	Over \$1,000,000 but not over \$1,500,000	\$175,000 plus 10% of the excess over \$1,000,000.	Over \$1,500,000 but not over \$17,000,000	\$225,000 plus 5% of the excess over \$1,500,000.	Over \$17,000,000	\$1,000,000.		
If the amount on line 1e, column (a) or (b) is:	The lobbying nontaxable amount is:													
Not over \$500,000	20% of the amount on line 1e.													
Over \$500,000 but not over \$1,000,000	\$100,000 plus 15% of the excess over \$500,000.													
Over \$1,000,000 but not over \$1,500,000	\$175,000 plus 10% of the excess over \$1,000,000.													
Over \$1,500,000 but not over \$17,000,000	\$225,000 plus 5% of the excess over \$1,500,000.													
Over \$17,000,000	\$1,000,000.													
<b>g</b> Grassroots nontaxable amount (enter 25% of line 1f) .....														
<b>h</b> Subtract line 1g from line 1a. If zero or less, enter -0- .....														
<b>i</b> Subtract line 1f from line 1c. If zero or less, enter -0- .....														
<b>j</b> If there is an amount other than zero on either line 1h or line 1i, did the organization file Form 4720 reporting section 4911 tax for this year? .....	<input type="checkbox"/> Yes	<input type="checkbox"/> No												

**4-Year Averaging Period Under Section 501(h)**  
(Some organizations that made a section 501(h) election do not have to complete all of the five columns below. See the separate instructions for lines 2a through 2f.)

<b>Lobbying Expenditures During 4-Year Averaging Period</b>					
Calendar year (or fiscal year beginning in)	(a) 2017	(b) 2018	(c) 2019	(d) 2020	(e) Total
<b>2a</b> Lobbying nontaxable amount					
<b>b</b> Lobbying ceiling amount (150% of line 2a, column(e))					
<b>c</b> Total lobbying expenditures					
<b>d</b> Grassroots nontaxable amount					
<b>e</b> Grassroots ceiling amount (150% of line 2d, column (e))					
<b>f</b> Grassroots lobbying expenditures					



**Part II-B Complete if the organization is exempt under section 501(c)(3) and has NOT filed Form 5768 (election under section 501(h)).**

	(a)		(b)
	Yes	No	Amount
<b>1</b> During the year, did the filing organization attempt to influence foreign, national, state, or local legislation, including any attempt to influence public opinion on a legislative matter or referendum, through the use of:			
<b>a</b> Volunteers?		X	
<b>b</b> Paid staff or management (include compensation in expenses reported on lines 1c through 1i)?		X	
<b>c</b> Media advertisements?		X	
<b>d</b> Mailings to members, legislators, or the public?		X	
<b>e</b> Publications, or published or broadcast statements?		X	
<b>f</b> Grants to other organizations for lobbying purposes?		X	
<b>g</b> Direct contact with legislators, their staffs, government officials, or a legislative body?		X	
<b>h</b> Rallies, demonstrations, seminars, conventions, speeches, lectures, or any similar means?		X	
<b>i</b> Other activities?	X		10,939.
<b>j</b> Total. Add lines 1c through 1i			10,939.
<b>2a</b> Did the activities in line 1 cause the organization to be not described in section 501(c)(3)?		X	
<b>b</b> If "Yes," enter the amount of any tax incurred under section 4912			
<b>c</b> If "Yes," enter the amount of any tax incurred by organization managers under section 4912			
<b>d</b> If the filing organization incurred a section 4912 tax, did it file Form 4720 for this year?			

**Part III-A Complete if the organization is exempt under section 501(c)(4), section 501(c)(5), or section 501(c)(6).**

	Yes	No
<b>1</b> Were substantially all (90% or more) dues received nondeductible by members?	1	
<b>2</b> Did the organization make only in-house lobbying expenditures of \$2,000 or less?	2	
<b>3</b> Did the organization agree to carry over lobbying and political campaign activity expenditures from the prior year?	3	

**Part III-B Complete if the organization is exempt under section 501(c)(4), section 501(c)(5), or section 501(c)(6) and if either (a) BOTH Part III-A, lines 1 and 2, are answered "No" OR (b) Part III-A, line 3, is answered "Yes."**

<b>1</b> Dues, assessments and similar amounts from members	1	
<b>2</b> Section 162(e) nondeductible lobbying and political expenditures (do not include amounts of political expenses for which the section 527(f) tax was paid).		
<b>a</b> Current year	2a	
<b>b</b> Carryover from last year	2b	
<b>c</b> Total	2c	
<b>3</b> Aggregate amount reported in section 6033(e)(1)(A) notices of nondeductible section 162(e) dues	3	
<b>4</b> If notices were sent and the amount on line 2c exceeds the amount on line 3, what portion of the excess does the organization agree to carryover to the reasonable estimate of nondeductible lobbying and political expenditure next year?	4	
<b>5</b> Taxable amount of lobbying and political expenditures (See instructions)	5	

**Part IV Supplemental Information**

Provide the descriptions required for Part I-A, line 1; Part I-B, line 4; Part I-C, line 5; Part II-A (affiliated group list); Part II-A, lines 1 and 2 (See instructions); and Part II-B, line 1. Also, complete this part for any additional information.

**PART II-B, LINE 1, LOBBYING ACTIVITIES:**

THE ORGANIZATION PAYS DUES TO LEADING AGE, A PORTION OF WHICH IS CONSIDERED LOBBYING.

**SCHEDULE D**  
**(Form 990)**

Department of the Treasury  
Internal Revenue Service

**Supplemental Financial Statements**

▶ **Complete if the organization answered "Yes" on Form 990, Part IV, line 6, 7, 8, 9, 10, 11a, 11b, 11c, 11d, 11e, 11f, 12a, or 12b.**  
▶ **Attach to Form 990.**

▶ **Go to [www.irs.gov/Form990](http://www.irs.gov/Form990) for instructions and the latest information.**

OMB No. 1545-0047

**2020**

**Open to Public Inspection**

Name of the organization **HUMANGOOD SOCIAL** Employer identification number **95-1894293**

**Part I Organizations Maintaining Donor Advised Funds or Other Similar Funds or Accounts.** Complete if the organization answered "Yes" on Form 990, Part IV, line 6.

	(a) Donor advised funds	(b) Funds and other accounts
1 Total number at end of year .....		
2 Aggregate value of contributions to (during year) .....		
3 Aggregate value of grants from (during year) .....		
4 Aggregate value at end of year .....		
5 Did the organization inform all donors and donor advisors in writing that the assets held in donor advised funds are the organization's property, subject to the organization's exclusive legal control? .....	<input type="checkbox"/> Yes <input type="checkbox"/> No	
6 Did the organization inform all grantees, donors, and donor advisors in writing that grant funds can be used only for charitable purposes and not for the benefit of the donor or donor advisor, or for any other purpose conferring impermissible private benefit? .....	<input type="checkbox"/> Yes <input type="checkbox"/> No	

**Part II Conservation Easements.** Complete if the organization answered "Yes" on Form 990, Part IV, line 7.

1 Purpose(s) of conservation easements held by the organization (check all that apply).  
 Preservation of land for public use (for example, recreation or education)  Preservation of a historically important land area  
 Protection of natural habitat  Preservation of a certified historic structure  
 Preservation of open space

2 Complete lines 2a through 2d if the organization held a qualified conservation contribution in the form of a conservation easement on the last day of the tax year.

	Held at the End of the Tax Year
a Total number of conservation easements .....	2a
b Total acreage restricted by conservation easements .....	2b
c Number of conservation easements on a certified historic structure included in (a) .....	2c
d Number of conservation easements included in (c) acquired after 7/25/06, and not on a historic structure listed in the National Register .....	2d

3 Number of conservation easements modified, transferred, released, extinguished, or terminated by the organization during the tax year ▶ \_\_\_\_\_

4 Number of states where property subject to conservation easement is located ▶ \_\_\_\_\_

5 Does the organization have a written policy regarding the periodic monitoring, inspection, handling of violations, and enforcement of the conservation easements it holds? .....

6 Staff and volunteer hours devoted to monitoring, inspecting, handling of violations, and enforcing conservation easements during the year ▶ \_\_\_\_\_

7 Amount of expenses incurred in monitoring, inspecting, handling of violations, and enforcing conservation easements during the year ▶ \$ \_\_\_\_\_

8 Does each conservation easement reported on line 2(d) above satisfy the requirements of section 170(h)(4)(B)(i) and section 170(h)(4)(B)(ii)? .....

9 In Part XIII, describe how the organization reports conservation easements in its revenue and expense statement and balance sheet, and include, if applicable, the text of the footnote to the organization's financial statements that describes the organization's accounting for conservation easements.

**Part III Organizations Maintaining Collections of Art, Historical Treasures, or Other Similar Assets.**

Complete if the organization answered "Yes" on Form 990, Part IV, line 8.

1a If the organization elected, as permitted under FASB ASC 958, not to report in its revenue statement and balance sheet works of art, historical treasures, or other similar assets held for public exhibition, education, or research in furtherance of public service, provide in Part XIII the text of the footnote to its financial statements that describes these items.

b If the organization elected, as permitted under FASB ASC 958, to report in its revenue statement and balance sheet works of art, historical treasures, or other similar assets held for public exhibition, education, or research in furtherance of public service, provide the following amounts relating to these items:

(i) Revenue included on Form 990, Part VIII, line 1 ▶ \$ \_\_\_\_\_

(ii) Assets included in Form 990, Part X ▶ \$ \_\_\_\_\_

2 If the organization received or held works of art, historical treasures, or other similar assets for financial gain, provide the following amounts required to be reported under FASB ASC 958 relating to these items:

a Revenue included on Form 990, Part VIII, line 1 ▶ \$ \_\_\_\_\_

b Assets included in Form 990, Part X ▶ \$ \_\_\_\_\_

**Part III Organizations Maintaining Collections of Art, Historical Treasures, or Other Similar Assets** (continued)

- 3 Using the organization's acquisition, accession, and other records, check any of the following that make significant use of its collection items (check all that apply):
- a  Public exhibition
  - b  Scholarly research
  - c  Preservation for future generations
  - d  Loan or exchange program
  - e  Other \_\_\_\_\_
- 4 Provide a description of the organization's collections and explain how they further the organization's exempt purpose in Part XIII.
- 5 During the year, did the organization solicit or receive donations of art, historical treasures, or other similar assets to be sold to raise funds rather than to be maintained as part of the organization's collection?  Yes  No

**Part IV Escrow and Custodial Arrangements.** Complete if the organization answered "Yes" on Form 990, Part IV, line 9, or reported an amount on Form 990, Part X, line 21.

- 1a Is the organization an agent, trustee, custodian or other intermediary for contributions or other assets not included on Form 990, Part X?  Yes  No
- b If "Yes," explain the arrangement in Part XIII and complete the following table:
- |                                 | Amount |
|---------------------------------|--------|
| c Beginning balance             | 1c     |
| d Additions during the year     | 1d     |
| e Distributions during the year | 1e     |
| f Ending balance                | 1f     |
- 2a Did the organization include an amount on Form 990, Part X, line 21, for escrow or custodial account liability?  Yes  No
- b If "Yes," explain the arrangement in Part XIII. Check here if the explanation has been provided on Part XIII

**Part V Endowment Funds.** Complete if the organization answered "Yes" on Form 990, Part IV, line 10.

	(a) Current year	(b) Prior year	(c) Two years back	(d) Three years back	(e) Four years back
1a Beginning of year balance					
b Contributions					
c Net investment earnings, gains, and losses					
d Grants or scholarships					
e Other expenditures for facilities and programs					
f Administrative expenses					
g End of year balance					

- 2 Provide the estimated percentage of the current year end balance (line 1g, column (a)) held as:
- a Board designated or quasi-endowment  \_\_\_\_\_ %
  - b Permanent endowment  \_\_\_\_\_ %
  - c Term endowment  \_\_\_\_\_ %
- The percentages on lines 2a, 2b, and 2c should equal 100%.
- 3a Are there endowment funds not in the possession of the organization that are held and administered for the organization by:
- |   | Yes    | No |
|---|--------|----|
| (i) Unrelated organizations   | 3a(i)  |    |
| (ii) Related organizations  | 3a(ii) |    |
| b If "Yes" on line 3a(ii), are the related organizations listed as required on Schedule R? <input type="checkbox"/> | 3b     |    |
- 4 Describe in Part XIII the intended uses of the organization's endowment funds.

**Part VI Land, Buildings, and Equipment.**

Complete if the organization answered "Yes" on Form 990, Part IV, line 11a. See Form 990, Part X, line 10.

Description of property	(a) Cost or other basis (investment)	(b) Cost or other basis (other)	(c) Accumulated depreciation	(d) Book value
1a Land		9,097,943.		9,097,943.
b Buildings		293,607,617.	158,382,726.	135,224,891.
c Leasehold improvements				
d Equipment		25,545,311.	17,187,064.	8,358,247.
e Other		15,577,314.	4,504,078.	11,073,236.
<b>Total.</b> Add lines 1a through 1e. (Column (d) must equal Form 990, Part X, column (B), line 10c.)				<b>163,754,317.</b>

**Part VII Investments - Other Securities.**

Complete if the organization answered "Yes" on Form 990, Part IV, line 11b. See Form 990, Part X, line 12.

(a) Description of security or category (including name of security)	(b) Book value	(c) Method of valuation: Cost or end-of-year market value
(1) Financial derivatives .....		
(2) Closely held equity interests .....		
(3) Other .....		
(A)		
(B)		
(C)		
(D)		
(E)		
(F)		
(G)		
(H)		
<b>Total.</b> (Col. (b) must equal Form 990, Part X, col. (B) line 12.) ▶		

**Part VIII Investments - Program Related.**

Complete if the organization answered "Yes" on Form 990, Part IV, line 11c. See Form 990, Part X, line 13.

(a) Description of investment	(b) Book value	(c) Method of valuation: Cost or end-of-year market value
(1)		
(2)		
(3)		
(4)		
(5)		
(6)		
(7)		
(8)		
(9)		
<b>Total.</b> (Col. (b) must equal Form 990, Part X, col. (B) line 13.) ▶		

**Part IX Other Assets.**

Complete if the organization answered "Yes" on Form 990, Part IV, line 11d. See Form 990, Part X, line 15.

(a) Description	(b) Book value
(1)	
(2)	
(3)	
(4)	
(5)	
(6)	
(7)	
(8)	
(9)	
<b>Total.</b> (Column (b) must equal Form 990, Part X, col. (B) line 15.) ▶	

**Part X Other Liabilities.**

Complete if the organization answered "Yes" on Form 990, Part IV, line 11e or 11f. See Form 990, Part X, line 25.

1. (a) Description of liability	(b) Book value
(1) Federal income taxes	
(2) RESIDENT DEPOSITS	766,050.
(3) ENTRANCE FEE - REBATABLE	50,537,324.
(4) ENTRANCE FEE - SUBJECT TO REFUND	35,015,851.
(5) ENTRANCE FEE - NONREFUNDABLE	57,139,555.
(6) OTHER LIABILITIES	223,236.
(7) DUE TO AFFILIATES	1,150,029.
(8)	
(9)	
<b>Total.</b> (Column (b) must equal Form 990, Part X, col. (B) line 25.) ▶	144,832,045.

2. Liability for uncertain tax positions. In Part XIII, provide the text of the footnote to the organization's financial statements that reports the organization's liability for uncertain tax positions under FASB ASC 740. Check here if the text of the footnote has been provided in Part XIII ...

**Part XI Reconciliation of Revenue per Audited Financial Statements With Revenue per Return.**

Complete if the organization answered "Yes" on Form 990, Part IV, line 12a.

<b>1</b>	Total revenue, gains, and other support per audited financial statements .....		<b>1</b>
<b>2</b>	Amounts included on line 1 but not on Form 990, Part VIII, line 12:		
<b>a</b>	Net unrealized gains (losses) on investments .....	<b>2a</b>	
<b>b</b>	Donated services and use of facilities .....	<b>2b</b>	
<b>c</b>	Recoveries of prior year grants .....	<b>2c</b>	
<b>d</b>	Other (Describe in Part XIII.) .....	<b>2d</b>	
<b>e</b>	Add lines <b>2a</b> through <b>2d</b> .....		<b>2e</b>
<b>3</b>	Subtract line <b>2e</b> from line <b>1</b> .....		<b>3</b>
<b>4</b>	Amounts included on Form 990, Part VIII, line 12, but not on line 1:		
<b>a</b>	Investment expenses not included on Form 990, Part VIII, line 7b .....	<b>4a</b>	
<b>b</b>	Other (Describe in Part XIII.) .....	<b>4b</b>	
<b>c</b>	Add lines <b>4a</b> and <b>4b</b> .....		<b>4c</b>
<b>5</b>	Total revenue. Add lines <b>3</b> and <b>4c</b> . (This must equal Form 990, Part I, line 12.) .....		<b>5</b>

**Part XII Reconciliation of Expenses per Audited Financial Statements With Expenses per Return.**

Complete if the organization answered "Yes" on Form 990, Part IV, line 12a.

<b>1</b>	Total expenses and losses per audited financial statements .....		<b>1</b>
<b>2</b>	Amounts included on line 1 but not on Form 990, Part IX, line 25:		
<b>a</b>	Donated services and use of facilities .....	<b>2a</b>	
<b>b</b>	Prior year adjustments .....	<b>2b</b>	
<b>c</b>	Other losses .....	<b>2c</b>	
<b>d</b>	Other (Describe in Part XIII.) .....	<b>2d</b>	
<b>e</b>	Add lines <b>2a</b> through <b>2d</b> .....		<b>2e</b>
<b>3</b>	Subtract line <b>2e</b> from line <b>1</b> .....		<b>3</b>
<b>4</b>	Amounts included on Form 990, Part IX, line 25, but not on line 1:		
<b>a</b>	Investment expenses not included on Form 990, Part VIII, line 7b .....	<b>4a</b>	
<b>b</b>	Other (Describe in Part XIII.) .....	<b>4b</b>	
<b>c</b>	Add lines <b>4a</b> and <b>4b</b> .....		<b>4c</b>
<b>5</b>	Total expenses. Add lines <b>3</b> and <b>4c</b> . (This must equal Form 990, Part I, line 18.) .....		<b>5</b>

**Part XIII Supplemental Information.**

Provide the descriptions required for Part II, lines 3, 5, and 9; Part III, lines 1a and 4; Part IV, lines 1b and 2b; Part V, line 4; Part X, line 2; Part XI, lines 2d and 4b; and Part XII, lines 2d and 4b. Also complete this part to provide any additional information.

**PART X, LINE 2:**

THE ORGANIZATION ASSESSES UNCERTAIN TAX POSITIONS IN ACCORDANCE WITH THE PROVISIONS OF THE FASB ASC TOPIC 740-10, INCOME TAXES. THE ORGANIZATION RECOGNIZES THE TAX BENEFIT FROM UNCERTAIN TAX POSITIONS ONLY IF IT IS MORE LIKELY THAN NOT THAT THE TAX POSITIONS WILL BE SUSTAINED ON EXAMINATION BY THE TAX AUTHORITIES, BASED ON THE TECHNICAL MERITS OF THE POSITION. THE TAX BENEFIT IS MEASURED BASED ON THE LARGEST BENEFIT THAT HAS A GREATER THAN 50% LIKELIHOOD OF BEING REALIZED UPON ULTIMATE SETTLEMENT.

AS OF DECEMBER 31, 2020 AND 2019, AND FOR THE YEAR ENDED DECEMBER 31, 2020, THERE WERE NO SUCH UNCERTAIN TAX POSITIONS.



**SCHEDULE I  
(Form 990)**

Department of the Treasury  
Internal Revenue Service

**Grants and Other Assistance to Organizations,  
Governments, and Individuals in the United States**  
Complete if the organization answered "Yes" on Form 990, Part IV, line 21 or 22.

▶ **Attach to Form 990.**

▶ **Go to [www.irs.gov/Form990](http://www.irs.gov/Form990) for the latest information.**

OMB No. 1545-0047

**2020**

**Open to Public  
Inspection**

Name of the organization **HUMANGOOD SOCAL** Employer identification number **95-1894293**

**Part I General Information on Grants and Assistance**

- 1** Does the organization maintain records to substantiate the amount of the grants or assistance, the grantees' eligibility for the grants or assistance, and the selection criteria used to award the grants or assistance? .....  **Yes**  **No**
- 2** Describe in Part IV the organization's procedures for monitoring the use of grant funds in the United States.

**Part II Grants and Other Assistance to Domestic Organizations and Domestic Governments.** Complete if the organization answered "Yes" on Form 990, Part IV, line 21, for any recipient that received more than \$5,000. Part II can be duplicated if additional space is needed.

<b>1 (a)</b> Name and address of organization or government	<b>(b)</b> EIN	<b>(c)</b> IRC section (if applicable)	<b>(d)</b> Amount of cash grant	<b>(e)</b> Amount of non-cash assistance	<b>(f)</b> Method of valuation (book, FMV, appraisal, other)	<b>(g)</b> Description of noncash assistance	<b>(h)</b> Purpose of grant or assistance
HUMANGOOD CORNERSTONE 6120 STONERIDGE MALL RD., SUITE 100 PLEASANTON, CA 94588	30-0184304	501(C)(3)	1,200,000.	0.	N/A	N/A	CAPITAL CONTRIBUTIONS
HUMANGOOD FOUNDATION SOUTH 516 BURCHETT STREET GLENDALE, CA 91203	91-1931309	501(C)(3)	236,168.	0.	N/A	N/A	OVERHEAD COST SUBSIDIZATION

**2** Enter total number of section 501(c)(3) and government organizations listed in the line 1 table ..... ▶ **2.**

**3** Enter total number of other organizations listed in the line 1 table ..... ▶ **0.**

LHA For Paperwork Reduction Act Notice, see the Instructions for Form 990.

Schedule I (Form 990) 2020

**Part III Grants and Other Assistance to Domestic Individuals.** Complete if the organization answered "Yes" on Form 990, Part IV, line 22.  
Part III can be duplicated if additional space is needed.

(a) Type of grant or assistance	(b) Number of recipients	(c) Amount of cash grant	(d) Amount of non-cash assistance	(e) Method of valuation (book, FMV, appraisal, other)	(f) Description of noncash assistance

**Part IV Supplemental Information.** Provide the information required in Part I, line 2; Part III, column (b); and any other additional information.

**PART I, LINE 2:**

STRATEGIC GRANTS MADE BY HUMANGOOD SOCIAL ARE DONE SO AS PART OF THE ANNUAL BUDGET PROCESS AND SUBJECT TO BOARD APPROVAL AND AUDIT COMMITTEE OVERSIGHT.

NOTE THE LISTED RECIPIENTS ARE ALL PART OF A COMMON INTERNAL ACCOUNTING SYSTEM AND DISBURSEMENTS ARE MONITORED THROUGH COMMON MANAGEMENT OVERSIGHT.



**SCHEDULE J  
(Form 990)**

**Compensation Information**

OMB No. 1545-0047

For certain Officers, Directors, Trustees, Key Employees, and Highest Compensated Employees  
 ▶ Complete if the organization answered "Yes" on Form 990, Part IV, line 23.  
 ▶ Attach to Form 990.  
 ▶ Go to [www.irs.gov/Form990](http://www.irs.gov/Form990) for instructions and the latest information.

**2020**

Open to Public Inspection

Department of the Treasury  
Internal Revenue Service

Name of the organization

**HUMANGOOD SOCIAL**

Employer identification number

**95-1894293**

**Part I Questions Regarding Compensation**

**1a** Check the appropriate box(es) if the organization provided any of the following to or for a person listed on Form 990, Part VII, Section A, line 1a. Complete Part III to provide any relevant information regarding these items.

- |  |   |
|--|---|
| <input type="checkbox"/> First-class or charter travel             | <input type="checkbox"/> Housing allowance or residence for personal use          |
| <input type="checkbox"/> Travel for companions                     | <input type="checkbox"/> Payments for business use of personal residence          |
| <input type="checkbox"/> Tax indemnification and gross-up payments | <input checked="" type="checkbox"/> Health or social club dues or initiation fees |
| <input checked="" type="checkbox"/> Discretionary spending account | <input type="checkbox"/> Personal services (such as maid, chauffeur, chef)        |

**b** If any of the boxes on line 1a are checked, did the organization follow a written policy regarding payment or reimbursement or provision of all of the expenses described above? If "No," complete Part III to explain .....

**2** Did the organization require substantiation prior to reimbursing or allowing expenses incurred by all directors, trustees, and officers, including the CEO/Executive Director, regarding the items checked on line 1a? .....

**3** Indicate which, if any, of the following the organization used to establish the compensation of the organization's CEO/Executive Director. Check all that apply. Do not check any boxes for methods used by a related organization to establish compensation of the CEO/Executive Director, but explain in Part III.

- |  |  |
|--|--|
| <input type="checkbox"/> Compensation committee              | <input type="checkbox"/> Written employment contract                     |
| <input type="checkbox"/> Independent compensation consultant | <input type="checkbox"/> Compensation survey or study                    |
| <input type="checkbox"/> Form 990 of other organizations     | <input type="checkbox"/> Approval by the board or compensation committee |

**4** During the year, did any person listed on Form 990, Part VII, Section A, line 1a, with respect to the filing organization or a related organization:

- a** Receive a severance payment or change-of-control payment? .....
- b** Participate in or receive payment from a supplemental nonqualified retirement plan? .....
- c** Participate in or receive payment from an equity-based compensation arrangement? .....
- If "Yes" to any of lines 4a-c, list the persons and provide the applicable amounts for each item in Part III.

**Only section 501(c)(3), 501(c)(4), and 501(c)(29) organizations must complete lines 5-9.**

**5** For persons listed on Form 990, Part VII, Section A, line 1a, did the organization pay or accrue any compensation contingent on the revenues of:

- a** The organization? .....
- b** Any related organization? .....
- If "Yes" on line 5a or 5b, describe in Part III.

**6** For persons listed on Form 990, Part VII, Section A, line 1a, did the organization pay or accrue any compensation contingent on the net earnings of:

- a** The organization? .....
- b** Any related organization? .....
- If "Yes" on line 6a or 6b, describe in Part III.

**7** For persons listed on Form 990, Part VII, Section A, line 1a, did the organization provide any nonfixed payments not described on lines 5 and 6? If "Yes," describe in Part III .....

**8** Were any amounts reported on Form 990, Part VII, paid or accrued pursuant to a contract that was subject to the initial contract exception described in Regulations section 53.4958-4(a)(3)? If "Yes," describe in Part III .....

**9** If "Yes" on line 8, did the organization also follow the rebuttable presumption procedure described in Regulations section 53.4958-6(c)? .....

	Yes	No
<b>1b</b>	X	
<b>2</b>	X	
<b>4a</b>		X
<b>4b</b>		X
<b>4c</b>		X
<b>5a</b>		X
<b>5b</b>		X
<b>6a</b>		X
<b>6b</b>		X
<b>7</b>		X
<b>8</b>		X
<b>9</b>		

LHA For Paperwork Reduction Act Notice, see the Instructions for Form 990.

Schedule J (Form 990) 2020

**Part II Officers, Directors, Trustees, Key Employees, and Highest Compensated Employees.** Use duplicate copies if additional space is needed.

For each individual whose compensation must be reported on Schedule J, report compensation from the organization on row (i) and from related organizations, described in the instructions, on row (ii). Do not list any individuals that aren't listed on Form 990, Part VII.

**Note:** The sum of columns (B)(i)-(iii) for each listed individual must equal the total amount of Form 990, Part VII, Section A, line 1a, applicable column (D) and (E) amounts for that individual.

(A) Name and Title		(B) Breakdown of W-2 and/or 1099-MISC compensation			(C) Retirement and other deferred compensation	(D) Nontaxable benefits	(E) Total of columns (B)(i)-(D)	(F) Compensation in column (B) reported as deferred on prior Form 990
		(i) Base compensation	(ii) Bonus & incentive compensation	(iii) Other reportable compensation				
(1) JOHN H. COCHRANE, III PRESIDENT/CHIEF EXECUTIVE OFFICER	(i)	519,221.	471,192.	25,360.	11,400.	15,134.	1,042,307.	0.
	(ii)	0.	0.	0.	0.	0.	0.	0.
(2) DANIEL OGUS CHIEF OPERATING OFFICER	(i)	421,927.	309,521.	37,942.	11,400.	18,842.	799,632.	0.
	(ii)	0.	0.	0.	0.	0.	0.	0.
(3) PAMELA S. CLAASSEN FORMER CFO TO 12/19; CH CAP STRATEG	(i)	0.	0.	0.	0.	0.	0.	0.
	(ii)	290,772.	217,061.	21,309.	11,400.	14,236.	554,778.	0.
(4) FLEMING MENG CHIEF INFORMATION OFFICER	(i)	325,961.	171,849.	0.	11,400.	18,456.	527,666.	0.
	(ii)	0.	0.	0.	0.	0.	0.	0.
(5) ANDREW MCDONALD CHIEF FINANCIAL OFFICER	(i)	0.	0.	0.	0.	0.	0.	0.
	(ii)	296,552.	82,790.	0.	11,400.	18,358.	409,100.	0.
(6) TROY KEACH VP HUMAN RESOURCES	(i)	0.	0.	0.	0.	0.	0.	0.
	(ii)	250,416.	115,440.	9,173.	11,400.	1,657.	388,086.	0.
(7) DENNIS GRADILLAS VP SALES	(i)	0.	0.	0.	0.	0.	0.	0.
	(ii)	219,264.	98,899.	0.	11,400.	17,916.	347,479.	0.
(8) TARA MCGUINNESS VP REGIONAL OPERATIONS	(i)	0.	0.	0.	0.	0.	0.	0.
	(ii)	224,948.	73,690.	9,427.	11,400.	19,378.	338,843.	0.
(9) TYLER ICHIEN VP REGIONAL OPERATIONS	(i)	0.	0.	0.	0.	0.	0.	0.
	(ii)	218,140.	89,353.	0.	9,518.	17,926.	334,937.	0.
(10) BETHANY GHASSEMI CHIEF LEGAL OFFICER	(i)	0.	0.	0.	0.	0.	0.	0.
	(ii)	234,808.	77,000.	6,659.	11,400.	784.	330,651.	0.
(11) MARC HERRERA VP HEALTHCARE & QUALITY	(i)	221,163.	72,447.	9,976.	11,400.	13,982.	328,968.	0.
	(ii)	0.	0.	0.	0.	0.	0.	0.
(12) GREGORY BEARCE VP REGIONAL OPERATIONS	(i)	0.	0.	0.	0.	0.	0.	0.
	(ii)	206,154.	81,000.	11,502.	11,400.	16,474.	326,530.	0.
(13) ANIKA HARTOUNIAN VP FINANCE	(i)	221,626.	70,616.	1,121.	8,821.	17,469.	319,653.	0.
	(ii)	0.	0.	0.	0.	0.	0.	0.
(14) GARY BORIERO EXECUTIVE DIRECTOR	(i)	195,626.	84,289.	0.	11,032.	16,613.	307,560.	0.
	(ii)	0.	0.	0.	0.	0.	0.	0.
(15) LISA HOLLAND VP REGIONAL OPERATIONS	(i)	195,958.	59,500.	4,104.	10,479.	13,124.	283,165.	0.
	(ii)	0.	0.	0.	0.	0.	0.	0.
(16) MELINDA FORNEY EXECUTIVE DIRECTOR	(i)	192,680.	56,115.	3,251.	9,626.	13,171.	274,843.	0.
	(ii)	0.	0.	0.	0.	0.	0.	0.

**Part II Officers, Directors, Trustees, Key Employees, and Highest Compensated Employees.** Use duplicate copies if additional space is needed.

For each individual whose compensation must be reported on Schedule J, report compensation from the organization on row (i) and from related organizations, described in the instructions, on row (ii). Do not list any individuals that aren't listed on Form 990, Part VII.

**Note:** The sum of columns (B)(i)-(iii) for each listed individual must equal the total amount of Form 990, Part VII, Section A, line 1a, applicable column (D) and (E) amounts for that individual.

(A) Name and Title		(B) Breakdown of W-2 and/or 1099-MISC compensation			(C) Retirement and other deferred compensation	(D) Nontaxable benefits	(E) Total of columns (B)(i)-(D)	(F) Compensation in column (B) reported as deferred on prior Form 990
		(i) Base compensation	(ii) Bonus & incentive compensation	(iii) Other reportable compensation				
(17) SUZANNE NAGEL	(i)	183,593.	54,188.	0.	8,365.	17,739.	263,885.	0.
VP MARKETING	(ii)	0.	0.	0.	0.	0.	0.	0.
(18) JESSICA LOPEZ	(i)	0.	0.	0.	0.	0.	0.	0.
VP REGIONAL OPERATIONS	(ii)	187,862.	52,986.	5,522.	9,573.	1,352.	257,295.	0.
(19) JAMES PARK	(i)	175,462.	54,602.	1,330.	8,926.	13,783.	254,103.	0.
VP COMMUNICATIONS	(ii)	0.	0.	0.	0.	0.	0.	0.
(20) MICAELLA KIM	(i)	178,271.	41,201.	0.	8,807.	7,223.	235,502.	0.
REGIONAL CLINICAL DIRECTOR	(ii)	0.	0.	0.	0.	0.	0.	0.
(21) CYNTHIA SALGADO	(i)	153,683.	52,787.	3,793.	8,437.	2,053.	220,753.	0.
VP, IT PROJECT AND APPLICATION	(ii)	0.	0.	0.	0.	0.	0.	0.
(22) SUSAN (LOUISE) RANKIN	(i)	0.	0.	0.	0.	0.	0.	0.
FORMER SPECIAL COUNSEL	(ii)	0.	96,059.	26,188.	0.	0.	122,247.	0.
	(i)							
	(ii)							
	(i)							
	(ii)							
	(i)							
	(ii)							
	(i)							
	(ii)							
	(i)							
	(ii)							
	(i)							
	(ii)							

**Part III** Supplemental Information

Provide the information, explanation, or descriptions required for Part I, lines 1a, 1b, 3, 4a, 4b, 4c, 5a, 5b, 6a, 6b, 7, and 8, and for Part II. Also complete this part for any additional information.

PART I, LINE 1A:

THE CHIEF EXECUTIVE OFFICER HAS A "DISCRETIONARY SPENDING ACCOUNT" THAT IS INCLUDED AS PART OF THE EXECUTIVE OFFICE CONTINGENCY BUDGET. ALL EXPENDITURES OF THESE FUNDS ARE SUBJECT TO CUSTOMARY APPROVAL PROCESSES AND ARE REVIEWED ON A RETROSPECTIVE BASIS WITH THE SUPPORTING DOCUMENTATION BY THE BOARD CHAIR OR COMPENSATION COMMITTEE.

A COST REIMBURSEMENT BENEFIT OF \$60/ MONTH IS AVAILABLE TO CERTAIN EXECUTIVE TEAM MEMBERS FOR MONTHLY GYM MEMBERSHIP DUES.

PART I, LINE 3:

COMPENSATION OF THE CEO IS DETERMINED BY HUMANGOOD USING THE FOLLOWING METHODS: COMPENSATION COMMITTEE, COMPENSATION CONSULTANT, FORM 990 OF OTHER ORGANIZATIONS, COMPENSATION SURVEY/STUDY AND APPROVAL BY THE BOARD/COMPENSATION COMMITTEE.

**Supplemental Information on Tax-Exempt Bonds**

▶ **Complete if the organization answered "Yes" on Form 990, Part IV, line 24a. Provide descriptions, explanations, and any additional information in Part VI.**  
▶ **Attach to Form 990.** ▶ **Go to [www.irs.gov/Form990](http://www.irs.gov/Form990) for instructions and the latest information.**

Name of the organization **HUMANGOOD SOCIAL** Employer identification number **95-1894293**

<b>Part I Bond Issues</b>											
(a) Issuer name	(b) Issuer EIN	(c) CUSIP #	(d) Date issued	(e) Issue price	(f) Description of purpose	(g) Defeased		(h) On behalf of issuer		(i) Pooled financing	
						Yes	No	Yes	No	Yes	No
<b>A</b> CALIFORNIA MUNICIPAL FINANCE AUTHORITY	20-1563466	NONE	12/27/15	47900000.	SEE PART VI		X		X		X
<b>B</b> CALIFORNIA MUNICIPAL FINANCE AUTHORITY SERIES	20-4563466	13048VKN7	08/21/19	41863570.	SEE PART VI		X		X		X
<b>C</b>											
<b>D</b>											

<b>Part II Proceeds</b>										
	A		B		C		D			
<b>1</b> Amount of bonds retired .....	4,645,000.									
<b>2</b> Amount of bonds legally defeased .....										
<b>3</b> Total proceeds of issue .....	48,153,688.		42,042,413.							
<b>4</b> Gross proceeds in reserve funds .....										
<b>5</b> Capitalized interest from proceeds .....										
<b>6</b> Proceeds in refunding escrows .....										
<b>7</b> Issuance costs from proceeds .....	544,859.		240,032.							
<b>8</b> Credit enhancement from proceeds .....										
<b>9</b> Working capital expenditures from proceeds .....										
<b>10</b> Capital expenditures from proceeds .....	10,032,756.									
<b>11</b> Other spent proceeds .....	37,576,073.		41,802,381.							
<b>12</b> Other unspent proceeds .....										
<b>13</b> Year of substantial completion .....	2017		2009							
	Yes	No	Yes	No	Yes	No	Yes	No		
<b>14</b> Were the bonds issued as part of a refunding issue of tax-exempt bonds (or, if issued prior to 2018, a current refunding issue)? .....		X	X							
<b>15</b> Were the bonds issued as part of a refunding issue of taxable bonds (or, if issued prior to 2018, an advance refunding issue)? .....	X			X						
<b>16</b> Has the final allocation of proceeds been made? .....	X		X							
<b>17</b> Does the organization maintain adequate books and records to support the final allocation of proceeds? .....	X		X							

**Part III Private Business Use**

	A		B		C		D	
	Yes	No	Yes	No	Yes	No	Yes	No
<b>1</b> Was the organization a partner in a partnership, or a member of an LLC, which owned property financed by tax-exempt bonds? .....		X		X				
<b>2</b> Are there any lease arrangements that may result in private business use of bond-financed property? .....		X		X				
<b>3a</b> Are there any management or service contracts that may result in private business use of bond-financed property? .....	X		X					
<b>b</b> If "Yes" to line 3a, does the organization routinely engage bond counsel or other outside counsel to review any management or service contracts relating to the financed property?	X		X					
<b>c</b> Are there any research agreements that may result in private business use of bond-financed property? .....		X		X				
<b>d</b> If "Yes" to line 3c, does the organization routinely engage bond counsel or other outside counsel to review any research agreements relating to the financed property? ...								
<b>4</b> Enter the percentage of financed property used in a private business use by entities other than a section 501(c)(3) organization or a state or local government .....	1.00 %		1.00 %					
<b>5</b> Enter the percentage of financed property used in a private business use as a result of unrelated trade or business activity carried on by your organization, another section 501(c)(3) organization, or a state or local government .....	.00 %		.00 %					
<b>6</b> Total of lines 4 and 5 .....	1.00 %		1.00 %					
<b>7</b> Does the bond issue meet the private security or payment test? .....		X		X				
<b>8a</b> Has there been a sale or disposition of any of the bond-financed property to a non-governmental person other than a 501(c)(3) organization since the bonds were issued?		X		X				
<b>b</b> If "Yes" to line 8a, enter the percentage of bond-financed property sold or disposed of .....								
<b>c</b> If "Yes" to line 8a, was any remedial action taken pursuant to Regulations sections 1.141-12 and 1.145-2? .....								
<b>9</b> Has the organization established written procedures to ensure that all nonqualified bonds of the issue are remediated in accordance with the requirements under Regulations sections 1.141-12 and 1.145-2? .....	X		X					

**Part IV Arbitrage**

	A		B		C		D	
	Yes	No	Yes	No	Yes	No	Yes	No
<b>1</b> Has the issuer filed Form 8038-T, Arbitrage Rebate, Yield Reduction and Penalty in Lieu of Arbitrage Rebate? .....		X		X				
<b>2</b> If "No" to line 1, did the following apply?								
<b>a</b> Rebate not due yet? .....		X	X					
<b>b</b> Exception to rebate? .....	X		X					
<b>c</b> No rebate due? .....	X			X				
If "Yes" to line 2c, provide in Part VI the date the rebate computation was performed .....								
<b>3</b> Is the bond issue a variable rate issue? .....	X			X				

	A		B		C		D	
	Yes	No	Yes	No	Yes	No	Yes	No
<b>4a</b> Has the organization or the governmental issuer entered into a qualified hedge with respect to the bond issue? .....		X		X				
<b>b</b> Name of provider .....								
<b>c</b> Term of hedge .....								
<b>d</b> Was the hedge superintegrated? .....								
<b>e</b> Was the hedge terminated? .....								
<b>5a</b> Were gross proceeds invested in a guaranteed investment contract (GIC)? .....		X		X				
<b>b</b> Name of provider .....								
<b>c</b> Term of GIC .....								
<b>d</b> Was the regulatory safe harbor for establishing the fair market value of the GIC satisfied? .....								
<b>6</b> Were any gross proceeds invested beyond an available temporary period? .....		X		X				
<b>7</b> Has the organization established written procedures to monitor the requirements of section 148? .....	X		X					

	A		B		C		D	
	Yes	No	Yes	No	Yes	No	Yes	No
Has the organization established written procedures to ensure that violations of federal tax requirements are timely identified and corrected through the voluntary closing agreement program if self-remediation isn't available under applicable regulations? .....	X		X					

**Part VI Supplemental Information.** Provide additional information for responses to questions on Schedule K. See instructions.

**SCHEDULE K, PART IV, ARBITRAGE, LINE 2C:**

(A) ISSUER NAME: CALIFORNIA MUNICIPAL FINANCE AUTHORITY  
 DATE THE REBATE COMPUTATION WAS PERFORMED: 12/17/2017

**SCHEDULE K, PART I, BOND ISSUES:**

(A) ISSUER NAME: CALIFORNIA MUNICIPAL FINANCE AUTHORITY  
 (F) DESCRIPTION OF PURPOSE: MAJOR IMPROVEMENT, REDEVELOPMENT & ADVANCE REFUNDING OF 2006 ISSUE PLUS CCRC LA JOLLA

(A) ISSUER NAME: CA STATEWIDE COMMUNITIES DEVELOPMENT AUTHORITY (2019)  
 (F) DESCRIPTION OF PURPOSE: TO REFINANCE 2009 AND 2010 BONDS

**SCHEDULE K, PART I, BOND ISSUES:**

HUMANGOOD SOCIAL IS PART OF THE OBLIGATED GROUP ALONG WITH HUMANGOOD NORCAL AND FRESNO FOR THE 2019 SERIES A BONDS FROM THE CALIFORNIA MUNICIPAL FINANCE AUTHORITY. NO PROCEEDS OR DEBT WERE ALLOCATED TO HUMANGOOD FRESNO. THE TOTAL BOND PROCEEDS OF \$158,289,653 ARE ALLOCATED BETWEEN NORCAL AND SOCIAL.

**SCHEDULE K, PART II, LINE 3:**

**Part VI Supplemental Information.** Provide additional information for responses to questions on Schedule K. See instructions. *(continued)*

THE TOTAL PROCEEDS DO NOT AGREE TO THE ISSUE PRICE IN PART I, COLUMN (E) DUE TO INVESTMENT EARNINGS / MARKET VALUE FLUCTUATIONS.

SCHEDULE K, PART III, LINE 4:

ANSWER TO PART III, LINE 4 INCLUDES A CONSERVATIVE PERCENTAGE OF 1%. ACTUAL PRIVATE BUSINESS USE CALCULATION %S WOULD FALL SHORT OF THAT PERCENTAGE.

SCHEDULE K, PART IV, ARBITRAGE, LINE 2C:

NOTE REGARDING THE REBATE COMPUTATION 12/17/2017: SINCE THE BOND PROCEEDS HAVE BEEN SPENT, A SPENDING EXCEPTION WAS MET, AND THE DEBT SERVICE FUND WAS OPERATED ON A BONA FIDE BASIS, NO FURTHER REBATE CALCULATIONS ARE NECESSARY.



**SCHEDULE O**  
**(Form 990 or 990-EZ)**

Department of the Treasury  
Internal Revenue Service

**Supplemental Information to Form 990 or 990-EZ**

Complete to provide information for responses to specific questions on  
Form 990 or 990-EZ or to provide any additional information.

▶ Attach to Form 990 or 990-EZ.

▶ Go to [www.irs.gov/Form990](http://www.irs.gov/Form990) for the latest information.

OMB No. 1545-0047

**2020**

Open to Public  
Inspection

Name of the organization

HUMANGOOD SOCIAL

Employer identification number

95-1894293

FORM 990, PART III, LINE 4A, PROGRAM SERVICE ACCOMPLISHMENTS:

- EDUCATIONAL ACTIVITIES INVOLVING STAFF, RESIDENTS, AND AGING SERVICES

PROFESSIONALS

- PAYMENT FOR ITEMS NOT REIMBURSED BY OTHER 3RD PARTY CONTRACTS

- SUPPORT GROUPS FOR NON-RESIDENTS

- USE OF FACILITIES BY THE COMMUNITY

- COMMUNITY CHARITY AND VOLUNTEER SUPPORT

- OTHER COMMUNITY BENEFITS TO RESIDENTS OF HUMANGOOD SOCIAL AND TO THE

COMMUNITY AT LARGE

FORM 990, PART VI, SECTION A, LINE 6:

THE HUMANGOOD SOCIAL BOARD OF DIRECTORS IS ELECTED BY HUMANGOOD, HUMANGOOD SOCIAL'S SOLE CORPORATE MEMBER. THE MEMBERS OF THE HUMANGOOD SOCIAL BOARD OF DIRECTORS CONSISTS OF THE HUMANGOOD BOARD MEMBERS, ONE BOARD MEMBER SELECTED BY THE RESIDENTS, AND ONE BOARD MEMBER NOMINATED BY THE HUMANGOOD SOCIAL BOARD.

FORM 990, PART VI, SECTION A, LINE 7A:

HUMANGOOD MAINTAINS APPROVAL RIGHTS OVER HUMANGOOD SOCIAL FOR THE ELECTION AND REMOVAL OF DIRECTORS, THE DISPOSITION OF ALL OR SUBSTANTIALLY ALL OF THE ASSETS OF THE CORPORATION, ANY MERGER AND ITS PRINCIPAL TERMS AND ANY AMENDMENTS OF THOSE TERMS, AND ANY ELECTION TO DISSOLVE THE CORPORATION. IN ADDITION, HUMANGOOD HAS ALL RIGHTS AFFORDED MEMBERS UNDER THE CALIFORNIA NONPROFIT PUBLIC BENEFIT CORPORATION LAW.

FORM 990, PART VI, SECTION A, LINE 7B:

LHA For Paperwork Reduction Act Notice, see the Instructions for Form 990 or 990-EZ.

Schedule O (Form 990 or 990-EZ) 2020

Name of the organization HUMANGOOD SOCIAL	Employer identification number 95-1894293
--	--

SEE EXPLANATION FOR 7A ABOVE.

FORM 990, PART VI, SECTION B, LINE 11B:

THE FORM 990 IS REVIEWED BY THE CFO AND FURNISHED TO THE BOARD OF DIRECTORS FOR REVIEW PRIOR TO FILING WITH THE IRS.

FORM 990, PART VI, SECTION B, LINE 12C:

EVERY YEAR, THE ORGANIZATION'S DIRECTORS AND OFFICERS ARE ASKED TO COMPLETE A CONFLICT OF INTEREST DISCLOSURE ALONG WITH A STATEMENT OF COMMITMENT.

IN CONNECTION WITH ANY ACTUAL OR POSSIBLE CONFLICT OF INTEREST, DIRECTORS AND OFFICERS MUST DISCLOSE THE EXISTENCE OF THE FINANCIAL INTEREST AND ALL MATERIAL FACTS RELATED THERETO TO THE DIRECTORS AND MEMBERS OF COMMITTEES. A VOTE IS TAKEN OUTSIDE THE PRESENCE OF THE INDIVIDUAL IN QUESTION TO DETERMINE IF AN ACTUAL CONFLICT EXISTS. IF THE BOARD OR COMMITTEE HAS REASONABLE CAUSE TO BELIEVE A MEMBER HAS FAILED TO DISCLOSE ACTUAL OR POSSIBLE CONFLICTS OF INTEREST, IT SHALL INFORM THE MEMBER OF THE BASIS FOR SUCH BELIEF AND AFFORD THE MEMBER AN OPPORTUNITY TO EXPLAIN THE ALLEGED FAILURE TO DISCLOSE.

IF, AFTER HEARING THE RESPONSE OF THE MEMBER, THE BOARD OR COMMITTEE DETERMINES THAT THE MEMBER HAS IN FACT FAILED TO DISCLOSE AN ACTUAL OR POSSIBLE CONFLICT OF INTEREST, IT SHALL TAKE APPROPRIATE DISCIPLINARY AND CORRECTIVE ACTION.

FORM 990, PART VI, SECTION B, LINE 15B:

COMPENSATION OF THE PRESIDENT, COO AND CFO OF HUMANGOOD IS REVIEWED ANNUALLY FOR MARKET COMPETITIVENESS BY A COMPENSATION COMMITTEE OF THE

Name of the organization HUMANGOOD SOCIAL	Employer identification number 95-1894293
--	--

HUMANGOOD BOARD. COMPENSATION OF OTHER OFFICERS AND KEY EMPLOYEES IS REVIEWED BY THE CEO WITH DISCLOSURE TO THE COMPENSATION COMMITTEE. THE HUMANGOOD BOARD MEMBERS AND PRESIDENT ARE INDEPENDENT WITH RESPECT TO THE INDIVIDUALS WHOSE COMPENSATION IS BEING REVIEWED, THE HUMANGOOD BOARD AND PRESIDENT RELY UPON WAGE AND SALARY STUDIES AND/OR REGULAR REVIEW BY A COMPENSATION CONSULTANT TO PROVIDE COMPARABLE SALARY DATA FOR THEIR CONSIDERATION. DECISIONS REGARDING COMPENSATION ARE DOCUMENTED ON A CONTEMPORANEOUS BASIS.

FORM 990, PART VI, SECTION C, LINE 19:

THE GOVERNING DOCUMENTS AND FINANCIAL STATEMENTS ARE AVAILABLE FOR INSPECTION UPON REQUEST. FINANCIAL AND OTHER DATA IS AVAILABLE ON THE ORGANIZATION'S WEBSITE, HUMANGOOD.ORG, AS WELL AS ON THE WEBSITE OF THE MUNICIPAL SECURITIES RULEMAKING BOARD ORGANIZATION (MSRB), ELECTRONIC MUNICIPAL MARKET ACCESS, EMMA.MSRB.ORG, USING ONE OF THE FOLLOWING CUSIP NUMBERS: 13048VKN7, 13048VKP2 OR 13048VLB2 AND THEN SELECTING INFORMATION TO REVIEW FROM THE "CONTINUING DISCLOSURE" TAB.

FORM 990, PART VII, SECTION A:

CERTAIN BOARD MEMBERS RECEIVED A STIPEND FOR 2020 FOR THEIR BOARD AND COMMITTEE WORK RELATED TO HUMANGOOD. NO COMPENSATION IS PAID TO ANY BOARD MEMBERS FOR THEIR ROLE ON THE HUMANGOOD SOCIAL BOARD.

BOARD STIPENDS:

COMMENCING TWO YEARS AFTER THE MAY 1, 2016 AFFILIATION OF HUMANGOOD NORCAL AND HUMANGOOD SOCIAL, THE SEVEN-MEMBER HUMANGOOD BOARD BEGAN RECEIVING STIPENDS FOR THEIR SERVICE TO THE TOP GOVERNING ORGANIZATION, HUMANGOOD. AN EVALUATION WAS PERFORMED OF SIMILARLY COMPLEX NON-PROFIT

Name of the organization

HUMANGOOD SOCIAL

Employer identification number

95-1894293

ORGANIZATIONS TO DETERMINE THE REASONABLENESS OF THE STIPEND AMOUNT FOR THE HOURS COMMITTED TO GOVERNANCE. NO REMUNERATION IS ATTRIBUTABLE TO SERVICE BY THESE SEVEN BOARD MEMBERS ON BOARDS OF OTHER HUMANGOOD AFFILIATES. THE REMUNERATION IS TAXABLE TO EACH OF THE MEMBERS AND REPORTED ANNUALLY ON FORM 1099 IN ADDITION TO DISCLOSURE IN THE FORM 990. BASED ON RECEIVING THIS REMUNERATION AND THE ADVICE OF TAX CONSULTANTS, THESE BOARD MEMBERS ARE NOT REFLECTED AS BEING INDEPENDENT DIRECTORS.

## INCENTIVE COMPENSATION:

EXECUTIVE DIRECTORS, REGIONAL MANAGERS AND SENIOR MANAGEMENT ARE ELIGIBLE FOR INCENTIVE COMPENSATION. IN ADVANCE OF THE CALENDAR YEAR TO WHICH INCENTIVE COMPENSATION APPLIES, GOALS ARE SET FOR EACH INDIVIDUAL THAT ALIGN WITH THE STRATEGIC AND OPERATIONAL OBJECTIVES OF THE ORGANIZATION. THE GOALS OF THE CEO AND EXECUTIVE TEAM ARE REVIEWED BY THE BOARD COMPENSATION COMMITTEE. BEFORE ANY PAYMENT IS EARNED, THE INCENTIVE POOL MUST BE FUNDED FROM EXCEEDING BUDGETED NET CASH PRODUCTION ARISING FROM THE SUM OF OPERATIONAL PERFORMANCE AND NET TURNOVER ENTRANCE FEES, AND IS SUBJECT TO A CAP. THE ATTAINMENT OF EACH INCENTIVE GOAL IS ASSESSED BY EACH TEAM MEMBER'S SUPERVISOR AND ULTIMATELY REVIEWED BY THE CEO PRIOR TO AWARD. IF THE INCENTIVE POOL IS PARTIALLY FUNDED, THE PARTIAL PERCENTAGE IS APPLIED TO THE POTENTIAL AWARD FOR EACH MEMBER'S ATTAINED GOALS.

## FORM 990, PART XI, LINE 9, CHANGES IN NET ASSETS:

UNREALIZED GAIN/(LOSS) ON INTEREST RATE SWAP 53,465.

CHANGE IN MINIMUM PENSION LIABILITY -874,805.

Name of the organization HUMANGOOD SOCIAL	Employer identification number 95-1894293
--	--

TOTAL TO FORM 990, PART XI, LINE 9 -821,340.

FORM 990, PART XII, LINE 3B:

HUMANGOOD SOCIAL RECEIVED FEDERAL FUNDING DURING THE YEAR WHICH REQUIRES  
 A SINGLE AUDIT. THE AUDIT HAS NOT BEEN COMPLETED YET BUT IS SCHEDULED  
 TO BE PREPARED IN ACCORDANCE WITH THE SINGLE AUDIT ACT AND OMB CIRCULAR  
 A-133.

**SCHEDULE R  
(Form 990)**

Department of the Treasury  
Internal Revenue Service

**Related Organizations and Unrelated Partnerships**

▶ Complete if the organization answered "Yes" on Form 990, Part IV, line 33, 34, 35b, 36, or 37.

▶ Attach to Form 990.

▶ Go to [www.irs.gov/Form990](http://www.irs.gov/Form990) for instructions and the latest information.

OMB No. 1545-0047

**2020**

Open to Public Inspection

Name of the organization **HUMANGOOD SOCIAL** Employer identification number **95-1894293**

**Part I Identification of Disregarded Entities.** Complete if the organization answered "Yes" on Form 990, Part IV, line 33.

(a) Name, address, and EIN (if applicable) of disregarded entity	(b) Primary activity	(c) Legal domicile (state or foreign country)	(d) Total income	(e) End-of-year assets	(f) Direct controlling entity

**Part II Identification of Related Tax-Exempt Organizations.** Complete if the organization answered "Yes" on Form 990, Part IV, line 34, because it had one or more related tax-exempt organizations during the tax year.

(a) Name, address, and EIN of related organization	(b) Primary activity	(c) Legal domicile (state or foreign country)	(d) Exempt Code section	(e) Public charity status (if section 501(c)(3))	(f) Direct controlling entity	(g) Section 512(b)(13) controlled entity?	
						Yes	No
HUMANGOOD NEVADA DBA LAS VENTANAS RETIREMENT COMMUNITY - 20-0566413, 6120 STONERIDGE MALL ROAD SUITE 100, PLEASANTON, CA 94588	LIFE PLAN COMMUNITY	CALIFORNIA	501(C)(3)	LINE 10	HUMANGOOD CORNERSTONE		X
HUMANGOOD IDAHO DBA TERRACES OF BOISE - 20-3659420, 6120 STONERIDGE MALL ROAD SUITE 100, PLEASANTON, CA 94588	LIFE PLAN COMMUNITY	CALIFORNIA	501(C)(3)	LINE 10	HUMANGOOD CORNERSTONE		X
HUMANGOOD FOUNDATION WEST - 23-7039408 6120 STONERIDGE MALL ROAD SUITE 100 PLEASANTON, CA 94588	SUPPORT FOR NON-PROFIT RESIDENTIAL COMMUNITIES	CALIFORNIA	501(C)(3)	LINE 12A, I	HUMANGOOD NORCAL		X
HUMANGOOD FRESNO DBA THE TERRACES AT SAN JOAQUIN GARDENS - 26-0650298, 6120 STONERIDGE MALL ROAD SUITE 100, PLEASANTON,	LIFE PLAN COMMUNITY	CALIFORNIA	501(C)(3)	LINE 10	HUMANGOOD		X

For Paperwork Reduction Act Notice, see the Instructions for Form 990.

Schedule R (Form 990) 2020

SEE PART VII FOR CONTINUATIONS

**Part II** Continuation of Identification of Related Tax-Exempt Organizations

(a) Name, address, and EIN of related organization	(b) Primary activity	(c) Legal domicile (state or foreign country)	(d) Exempt Code section	(e) Public charity status (if section 501(c)(3))	(f) Direct controlling entity	(g) Section 512(b)(13) controlled organization?	
						Yes	No
GOOD SHEPHERD SENIOR HOUSING - 26-2704795 6120 STONERIDGE MALL ROAD SUITE 100 PLEASANTON, CA 94588	AFFORDABLE HOUSING	WASHINGTON	501(C)(3)	LINE 10	HUMANGOOD AFFORDABLE HOUSING		X
HUMANGOOD CORNERSTONE - 30-0184304 6120 STONERIDGE MALL ROAD SUITE 100 PLEASANTON, CA 94588	PARENT ORGANIZATION	CALIFORNIA	501(C)(3)	LINE 12B, II	HUMANGOOD		X
REDLANDS SENIOR HOUSING TWO - 31-1539936 6120 STONERIDGE MALL ROAD SUITE 100 PLEASANTON, CA 94588	AFFORDABLE HOUSING	CALIFORNIA	501(C)(3)	LINE 10	HUMANGOOD AFFORDABLE HOUSING		X
HUMANGOOD - 31-1558961 6120 STONERIDGE MALL ROAD SUITE 100 PLEASANTON, CA 94588	PARENT ORGANIZATION	CALIFORNIA	501(C)(3)	LINE 12A, I	N/A		X
BAY VISTA SENIOR HOUSING - 46-0777494 6120 STONERIDGE MALL ROAD SUITE 100 PLEASANTON, CA 94588	AFFORDABLE HOUSING	WASHINGTON	501(C)(3)	LINE 10	HUMANGOOD AFFORDABLE HOUSING		X
HILLCREST SENIOR HOUSING CORP - 76-0801395 6120 STONERIDGE MALL ROAD SUITE 100 PLEASANTON, CA 94588	AFFORDABLE HOUSING	CALIFORNIA	501(C)(3)	LINE 10	HUMANGOOD AFFORDABLE HOUSING		X
JUDSON TERRACE LODGE - 77-0389124 6120 STONERIDGE MALL ROAD SUITE 100 PLEASANTON, CA 94588	AFFORDABLE HOUSING	CALIFORNIA	501(C)(3)	LINE 10	HUMANGOOD AFFORDABLE HOUSING		X
HUMANGOOD ARIZONA, INC. DBA TERRACES OF PHOENIX - 86-0176446, 6120 STONERIDGE MALL ROAD SUITE 100, PLEASANTON, CA 94588	LIFE PLAN COMMUNITY	ARIZONA	501(C)(3)	LINE 10	HUMANGOOD CORNERSTONE		X
SALISHAN SENIOR HOUSING, INC. - 90-0504991 6120 STONERIDGE MALL ROAD SUITE 100 PLEASANTON, CA 94588	AFFORDABLE HOUSING	WASHINGTON	501(C)(3)	LINE 10	HUMANGOOD AFFORDABLE HOUSING		X
HUMANGOOD WASHINGTON DBA JUDSON PARK RETIREMENT COMMUNITY - 91-1659735, 6120 STONERIDGE MALL ROAD SUITE 100, PLEASANTON,	LIFE PLAN COMMUNITY	WASHINGTON	501(C)(3)	LINE 10	HUMANGOOD CORNERSTONE		X
HUMANGOOD FOUNDATION SOUTH - 91-1931309 516 BURCHETT STREET GLENDALE, CA 91203	FUNDRAISING, FINANCIAL RESOURCES TO RELATED ENTITIES	CALIFORNIA	501(C)(3)	LINE 7	HUMANGOOD SOCIAL		X
SAN LEANDRO SENIOR HOUSING INC - 91-2158413 6120 STONERIDGE MALL ROAD SUITE 100 PLEASANTON, CA 94588	AFFORDABLE HOUSING	CALIFORNIA	501(C)(3)	LINE 10	HUMANGOOD AFFORDABLE HOUSING		X

**Part II** Continuation of Identification of Related Tax-Exempt Organizations

(a) Name, address, and EIN of related organization	(b) Primary activity	(c) Legal domicile (state or foreign country)	(d) Exempt Code section	(e) Public charity status (if section 501(c)(3))	(f) Direct controlling entity	(g) Section 512(b)(13) controlled organization?	
						Yes	No
HARBORVIEW PROPERTIES, INC. - 91-6086253 6120 STONERIDGE MALL ROAD SUITE 100 PLEASANTON, CA 94588	AFFORDABLE HOUSING	WASHINGTON	501(C)(3)	LINE 10	HUMANGOOD AFFORDABLE HOUSING		X
REDLANDS SENIOR HOUSING, INC. - 94-2902763 6120 STONERIDGE MALL ROAD SUITE 100 PLEASANTON, CA 94588	AFFORDABLE HOUSING	CALIFORNIA	501(C)(3)	LINE 10	HUMANGOOD AFFORDABLE HOUSING		X
HUMANGOOD AFFORDABLE HOUSING - 94-3085296 6120 STONERIDGE MALL ROAD SUITE 100 PLEASANTON, CA 94588	AFFORDABLE HOUSING	CALIFORNIA	501(C)(3)	LINE 10	HUMANGOOD CORNERSTONE		X
TAHOE SENIOR PLAZA INC - 94-3292737 6120 STONERIDGE MALL ROAD SUITE 100 PLEASANTON, CA 94588	AFFORDABLE HOUSING	CALIFORNIA	501(C)(3)	LINE 10	HUMANGOOD AFFORDABLE HOUSING		X
OAK KNOLLS HAVEN CORPORATION - 95-3497055 6120 STONERIDGE MALL ROAD SUITE 100 PLEASANTON, CA 94588	AFFORDABLE HOUSING	CALIFORNIA	501(C)(3)	LINE 10	HUMANGOOD AFFORDABLE HOUSING		X
MANTUA PRESBYTERIAN APARTMENTS, INC. - 20-5006775, 2000 JOSHUA ROAD, LAFAYETTE HILL, PA 19444	LOW INCOME HOUSING FOR SENIOR CITIZENS AND HANDICAPPED	PENNSYLVANIA	501(C)(3)	LINE 10	PHILADELPHIA PRESBYTERY HOMES AND SERVICES FOR		X
PASCHALL SENIOR HOUSING, INC. - 20-5957419 2000 JOSHUA ROAD LAFAYETTE HILL, PA 19444	LOW INCOME HOUSING FOR SENIOR CITIZENS AND HANDICAPPED	PENNSYLVANIA	501(C)(3)	LINE 10	PHILADELPHIA PRESBYTERY HOMES AND SERVICES FOR		X
MAKEMIE AT WHITELAND - 20-8523793 2000 JOSHUA ROAD LAFAYETTE HILL, PA 19444	INACTIVE	PENNSYLVANIA	501(C)(3)	LINE 10	PHILADELPHIA PRESBYTERY HOMES AND SERVICES FOR		X
PHILADELPHIA PRESBYTERY APARTMENTS OF MORRISVILLE, INC. - 22-2466663, 2000 JOSHUA ROAD, LAFAYETTE HILL, PA 19444	LOW INCOME HOUSING FOR SENIOR CITIZENS AND HANDICAPPED	PENNSYLVANIA	501(C)(3)	LINE 10	PHILADELPHIA PRESBYTERY HOMES AND SERVICES FOR		X
PRESBYTERIAN HOME AT 58TH STREET - 23-1352513, 2000 JOSHUA ROAD, LAFAYETTE HILL, PA 19444	SUPPORT TO AFFILIATES	PENNSYLVANIA	501(C)(3)	LINE 12B, II	PHILADELPHIA PRESBYTERY HOMES AND SERVICES FOR		X
HUMANGOOD PENNSYLVANIA FKA PHILADELPHIA PRESBYTERY HOMES, INC. - 23-1547587, 2000 JOSHUA ROAD, LAFAYETTE HILL, PA 19444	PROVIDE SENIOR LIVING OPTIONS, FUNDRAISING & SUPPORT	PENNSYLVANIA	501(C)(3)	LINE 10	PHILADELPHIA PRESBYTERY HOMES AND SERVICES FOR		X
PHILADELPHIA PRESBYTERY APARTMENTS, INC. - 23-2081651, 2000 JOSHUA ROAD, LAFAYETTE HILL, PA 19444	LOW INCOME HOUSING FOR SENIOR CITIZENS AND HANDICAPPED	PENNSYLVANIA	501(C)(3)	LINE 10	PHILADELPHIA PRESBYTERY HOMES AND SERVICES FOR		X



**Part II** Continuation of Identification of Related Tax-Exempt Organizations

(a) Name, address, and EIN of related organization	(b) Primary activity	(c) Legal domicile (state or foreign country)	(d) Exempt Code section	(e) Public charity status (if section 501(c)(3))	(f) Direct controlling entity	(g) Section 512(b)(13) controlled organization?	
						Yes	No
GERMANTOWN INTERFAITH HOUSING, INC. - 23-2211053, 2000 JOSHUA ROAD, LAFAYETTE HILL, PA 19444	LOW INCOME HOUSING FOR SENIOR CITIZENS AND HANDICAPPED	PENNSYLVANIA	501(C)(3)	LINE 10	PHILADELPHIA PRESBYTERY HOMES AND SERVICES FOR		X
GRACE COURT, INC. - 23-2299928 2000 JOSHUA ROAD LAFAYETTE HILL, PA 19444	LOW INCOME HOUSING FOR SENIOR CITIZENS AND HANDICAPPED	PENNSYLVANIA	501(C)(3)	LINE 10	PHILADELPHIA PRESBYTERY HOMES AND SERVICES FOR		X
PRESBYTERIAN APARTMENTS AT 58TH STREET, INC. - 23-2605582, 2000 JOSHUA ROAD, LAFAYETTE HILL, PA 19444	LOW INCOME HOUSING FOR SENIOR CITIZENS AND HANDICAPPED	PENNSYLVANIA	501(C)(3)	LINE 10	PHILADELPHIA PRESBYTERY HOMES AND SERVICES FOR		X
SOUTHWEST PHILADELPHIA PRESBYTERY APARTMENTS, INC. - 23-2700459, 2000 JOSHUA ROAD, LAFAYETTE HILL, PA 19444	LOW INCOME HOUSING FOR SENIOR CITIZENS AND HANDICAPPED	PENNSYLVANIA	501(C)(3)	LINE 10	PHILADELPHIA PRESBYTERY HOMES AND SERVICES FOR		X
TIOGA PRESBYTERIAN APARTMENTS, INC. - 23-2763902, 2000 JOSHUA ROAD, LAFAYETTE HILL, PA 19444	LOW INCOME HOUSING FOR SENIOR CITIZENS AND HANDICAPPED	PENNSYLVANIA	501(C)(3)	LINE 10	PHILADELPHIA PRESBYTERY HOMES AND SERVICES FOR		X
OLD CITY PRESBYTERIAN APARTMENTS, INC. - 23-2778769, 2000 JOSHUA ROAD, LAFAYETTE HILL, PA 19444	LOW INCOME HOUSING FOR SENIOR CITIZENS AND HANDICAPPED	PENNSYLVANIA	501(C)(3)	LINE 10	PHILADELPHIA PRESBYTERY HOMES AND SERVICES FOR		X
HUMANGOOD EAST FKA PHILADELPHIA PRESBYTERY HOMES AND SERVICES FOR THE AGING , 2000 JOSHUA ROAD, LAFAYETTE HILL, PA 19444	PARENT ENTITY	PENNSYLVANIA	501(C)(3)	LINE 12B, II	N/A		X
BALA PRESBYTERIAN HOME FOUNDATION - 23-2834398, 2000 JOSHUA ROAD, LAFAYETTE HILL, PA 19444	FUNDRAISING & SUPPORT	PENNSYLVANIA	501(C)(3)	LINE 12B, II	PHILADELPHIA PRESBYTERY HOMES AND SERVICES FOR		X
PRESBYSERVICES - 23-3000326 2000 JOSHUA ROAD LAFAYETTE HILL, PA 19444	MASTER PAYROLL COMPANY	PENNSYLVANIA	501(C)(3)	LINE 12B, II	PHILADELPHIA PRESBYTERY HOMES AND SERVICES FOR		X
AVENUE OF THE ARTS PRESBYTERIAN-PSC APARTMENTS, INC. - 23-3027613, 2000 JOSHUA ROAD, LAFAYETTE HILL, PA 19444	LOW INCOME HOUSING FOR SENIOR CITIZENS AND HANDICAPPED	PENNSYLVANIA	501(C)(3)	LINE 10	PHILADELPHIA PRESBYTERY HOMES AND SERVICES FOR		X
SOUTHWEST PHILADELPHIA NEIGHBORHOOD RENEWAL PROGRAM - 23-3066741, 2000 JOSHUA ROAD, LAFAYETTE HILL, PA 19444	INACTIVE	PENNSYLVANIA	501(C)(3)	PF	PHILADELPHIA PRESBYTERY HOMES AND SERVICES FOR		X
PHILADELPHIA PRESBYTERY HOMES WC TRUST - 23-7816031, 2000 JOSHUA ROAD, LAFAYETTE HILL, PA 19444	INACTIVE	PENNSYLVANIA	501(C)(3)	LINE 10	PHILADELPHIA PRESBYTERY HOMES AND SERVICES FOR		X

**Part II** Continuation of Identification of Related Tax-Exempt Organizations

(a) Name, address, and EIN of related organization	(b) Primary activity	(c) Legal domicile (state or foreign country)	(d) Exempt Code section	(e) Public charity status (if section 501(c)(3))	(f) Direct controlling entity	(g) Section 512(b)(13) controlled organization?	
						Yes	No
SOUTH PHILADELPHIA PRESBYTERIAN APARTMENTS, INC. - 46-0477271, 2000 JOSHUA ROAD, LAFAYETTE HILL, PA 19444	LOW INCOME HOUSING FOR SENIOR CITIZENS AND HANDICAPPED	PENNSYLVANIA	501(C)(3)	LINE 10	PHILADELPHIA PRESBYTERY HOMES AND SERVICES FOR		X
GREENWAY PRESBYTERIAN APARTMENTS, INC. - 86-1063722, 2000 JOSHUA ROAD, LAFAYETTE HILL, PA 19444	LOW INCOME HOUSING FOR SENIOR CITIZENS AND HANDICAPPED	PENNSYLVANIA	501(C)(3)	LINE 10	PHILADELPHIA PRESBYTERY HOMES AND SERVICES FOR		X
ROSE VIEW TERRACE, INC. - 26-4333422 516 BURCHETT STREET GLENDALE, CA 91203	AFFORDABLE HOUSING	CALIFORNIA	501(C)(3)	LINE 7	HUMANGOOD AFFORDABLE HOUSING		X
SENIOR AFFORDABLE HOUSING CORP #3 DBA: HADLEY VILLAS - 30-0032287, 516 BURCHETT STREET, GLENDALE, CA 91203	AFFORDABLE HOUSING	CALIFORNIA	501(C)(3)	LINE 7	HUMANGOOD AFFORDABLE HOUSING		X
SENIOR AFFORDABLE HOUSING CORP #4 DBA: MOUTAIN VISTAS - 30-0032292, 516 BURCHETT STREET, GLENDALE, CA 91203	AFFORDABLE HOUSING	CALIFORNIA	501(C)(3)	LINE 7	HUMANGOOD AFFORDABLE HOUSING		X
ANDRES DUARTE TERRACE - 30-0155849 516 BURCHETT STREET GLENDALE, CA 91203	AFFORDABLE HOUSING	CALIFORNIA	501(C)(3)	LINE 7	HUMANGOOD AFFORDABLE HOUSING		X
LC HOTCHKISS TERRACE - 30-0155895 516 BURCHETT STREET GLENDALE, CA 91203	AFFORDABLE HOUSING	CALIFORNIA	501(C)(3)	LINE 7	HUMANGOOD AFFORDABLE HOUSING		X
SENIOR AFFORDABLE HOUSING CORP #6 WILLIAM C ARTHUR TERRACE - 30-0204104, 516 BURCHETT STREET, GLENDALE, CA 91203	AFFORDABLE HOUSING	CALIFORNIA	501(C)(3)	LINE 7	HUMANGOOD AFFORDABLE HOUSING		X
REDDING MOUNTAIN VISTAS II - 30-0239400 516 BURCHETT STREET GLENDALE, CA 91203	AFFORDABLE HOUSING	CALIFORNIA	501(C)(3)	LINE 7	HUMANGOOD AFFORDABLE HOUSING		X
SIERRA GATEWAY SENIOR RESIDENCE - 30-0239445 516 BURCHETT STREET GLENDALE, CA 91203	AFFORDABLE HOUSING	CALIFORNIA	501(C)(3)	LINE 7	HUMANGOOD AFFORDABLE HOUSING		X
BANDERA SENIOR HOUSING CORP DBA: GEORGE MCDONALD COURT - 31-1538768, 516 BURCHETT STREET, GLENDALE, CA 91203	AFFORDABLE HOUSING	CALIFORNIA	501(C)(3)	LINE 7	HUMANGOOD AFFORDABLE HOUSING		X
SENIOR AFFORDABLE HOUSING CORP #1 DBA: OTTO GRUBER HOUSING - 31-1538772, 516 BURCHETT STREET, GLENDALE, CA 91203	AFFORDABLE HOUSING	CALIFORNIA	501(C)(3)	LINE 7	HUMANGOOD AFFORDABLE HOUSING		X

**Part II** Continuation of Identification of Related Tax-Exempt Organizations

(a) Name, address, and EIN of related organization	(b) Primary activity	(c) Legal domicile (state or foreign country)	(d) Exempt Code section	(e) Public charity status (if section 501(c)(3))	(f) Direct controlling entity	(g) Section 512(b)(13) controlled organization?	
						Yes	No
BEACON SENIOR HOUSING CORP DBA ROSEWOOD COURT - 31-1654224, 516 BURCHETT STREET, GLENDALE, CA 91203	AFFORDABLE HOUSING	CALIFORNIA	501(C)(3)	LINE 7	HUMANGOOD AFFORDABLE HOUSING		X
SENIOR AFFORDABLE HOUSING CORP #2 DBA: CLARK TERRACE II - 31-1718833, 516 BURCHETT STREET, GLENDALE, CA 91203	AFFORDABLE HOUSING	CALIFORNIA	501(C)(3)	LINE 7	HUMANGOOD AFFORDABLE HOUSING		X
COMMUNITY CARE FOR ADULTS - 33-0110895 516 BURCHETT STREET GLENDALE, CA 91203	INACTIVE CORPORATION	CALIFORNIA	501(C)(3)	LINE 10	HUMANGOOD SOCIAL		X
CENTER FOR AGING RESOURCES - 33-0368618 516 BURCHETT STREET GLENDALE, CA 91203	INACTIVE CORPORATION	CALIFORNIA	501(C)(3)	LINE 7	HUMANGOOD SOCIAL		X
THE REDWOOD FOUNDATION FOR SENIOR SERVICES - 33-0368622, 516 BURCHETT STREET, GLENDALE, CA 91203	INACTIVE CORPORATION	CALIFORNIA	501(C)(3)	LINE 10	HUMANGOOD SOCIAL		X
LIL JACKSON SENIOR COMMUNITY - 41-2205339 516 BURCHETT STREET GLENDALE, CA 91203	AFFORDABLE HOUSING	CALIFORNIA	501(C)(3)	LINE 7	HUMANGOOD AFFORDABLE HOUSING		X
SIERRA GATEWAY SENIOR RESIDENCE II - 45-4945583, 516 BURCHETT STREET, GLENDALE, CA 91203	AFFORDABLE HOUSING	CALIFORNIA	501(C)(3)	LINE 7	HUMANGOOD AFFORDABLE HOUSING		X
HUMANGOOD NORCAL - 94-1225374 6120 STONERIDGE MALL ROAD SUITE 100 PLEASANTON, CA 94588	LIFE PLAN COMMUNITIES	CALIFORNIA	501(C)(3)	LINE 10	HUMANGOOD		X
SYCAMORE TERRACE INC - 95-3248885 516 BURCHETT STREET GLENDALE, CA 91203	AFFORDABLE HOUSING	CALIFORNIA	501(C)(3)	LINE 7	HUMANGOOD AFFORDABLE HOUSING		X
CASA DE LA PALOMA - 95-3276173 516 BURCHETT STREET GLENDALE, CA 91203	AFFORDABLE HOUSING	CALIFORNIA	501(C)(3)	LINE 7	HUMANGOOD AFFORDABLE HOUSING		X
PARK PASEO - 95-3628584 516 BURCHETT STREET GLENDALE, CA 91203	AFFORDABLE HOUSING	CALIFORNIA	501(C)(3)	LINE 7	HUMANGOOD AFFORDABLE HOUSING		X
PALMER AVENUE RETIREMENT CORP - 95-3864197 516 BURCHETT STREET GLENDALE, CA 91203	AFFORDABLE HOUSING	CALIFORNIA	501(C)(3)	LINE 10	HUMANGOOD AFFORDABLE HOUSING		X

**Part II** Continuation of Identification of Related Tax-Exempt Organizations

(a) Name, address, and EIN of related organization	(b) Primary activity	(c) Legal domicile (state or foreign country)	(d) Exempt Code section	(e) Public charity status (if section 501(c)(3))	(f) Direct controlling entity	(g) Section 512(b)(13) controlled organization?	
						Yes	No
CANTERBURY VILLAGE RETIREMENT CORP - 95-3864198, 516 BURCHETT STREET, GLENDALE, CA 91203	AFFORDABLE HOUSING	CALIFORNIA	501(C)(3)	LINE 7	HUMANGOOD AFFORDABLE HOUSING		X
WESTMINSTER COURT - 95-3866226 516 BURCHETT STREET GLENDALE, CA 91203	AFFORDABLE HOUSING	CALIFORNIA	501(C)(3)	LINE 7	HUMANGOOD AFFORDABLE HOUSING		X
SOROPTIMIST GARDENS HOUSING CORP DBA: THE GARDENS - 95-3927250, 516 BURCHETT STREET, GLENDALE, CA 91203	AFFORDABLE HOUSING	CALIFORNIA	501(C)(3)	LINE 7	HUMANGOOD AFFORDABLE HOUSING		X
CASTLE ARGYLE - 95-4454256 516 BURCHETT STREET GLENDALE, CA 91203	AFFORDABLE HOUSING	CALIFORNIA	501(C)(3)	LINE 7	HUMANGOOD AFFORDABLE HOUSING		X
MOUNTAIN PARK TERRACE INC DBA CLARK TERRACE - 95-4570416, 516 BURCHETT STREET, GLENDALE, CA 91203	AFFORDABLE HOUSING	CALIFORNIA	501(C)(3)	LINE 7	HUMANGOOD AFFORDABLE HOUSING		X
VENICE SENIOR HOUSING CORP DBA ADDA & PAUL SAFRAN SR HOUSING - 95-4607627, 516 BURCHETT STREET, GLENDALE, CA 91203	AFFORDABLE HOUSING	CALIFORNIA	501(C)(3)	LINE 7	HUMANGOOD AFFORDABLE HOUSING		X
PRESBYTERIAN HOMES AND SERVICES OF THE WEST - 95-6058276, 516 BURCHETT STREET, GLENDALE, CA 91203	INACTIVE CORPORATION	CALIFORNIA	501(C)(3)	LINE 10	HUMANGOOD SOCIAL		X
JUDSON TERRACE HOMES - 95-6153706 6120 STONERIDGE MALL ROAD SUITE 100 PLEASANTON, CA 94588	AFFORDABLE HOUSING	CALIFORNIA	501(C)(3)	LINE 10	HUMANGOOD AFFORDABLE HOUSING		X

**Part III Identification of Related Organizations Taxable as a Partnership.** Complete if the organization answered "Yes" on Form 990, Part IV, line 34, because it had one or more related organizations treated as a partnership during the tax year.

(a) Name, address, and EIN of related organization	(b) Primary activity	(c) Legal domicile (state or foreign country)	(d) Direct controlling entity	(e) Predominant income (related, unrelated, excluded from tax under sections 512-514)	(f) Share of total income	(g) Share of end-of-year assets	(h) Disproportionate allocations?		(i) Code V-UBI amount in box 20 of Schedule K-1 (Form 1065)	(j) General or managing partner?		(k) Percentage ownership
							Yes	No		Yes	No	

**Part IV Identification of Related Organizations Taxable as a Corporation or Trust.** Complete if the organization answered "Yes" on Form 990, Part IV, line 34, because it had one or more related organizations treated as a corporation or trust during the tax year.

(a) Name, address, and EIN of related organization	(b) Primary activity	(c) Legal domicile (state or foreign country)	(d) Direct controlling entity	(e) Type of entity (C corp, S corp, or trust)	(f) Share of total income	(g) Share of end-of-year assets	(h) Percentage ownership	(i) Section 512(b)(13) controlled entity?	
								Yes	No
REDDING RETIREMENT HOUSING CORPORATION - 95-4756544, 516 BURCHETT STREET, GLENDALE, CA 91203	INACTIVE CORPORATION	CA	HUMANGOOD SOCAL	C CORP	0.	0.	100%	X	
SOUTHWEST PRESBYTERIAN HOMES AND SERVICES - 95-4756541, 516 BURCHETT STREET, GLENDALE, CA 91203	INACTIVE CORPORATION	CA	HUMANGOOD SOCAL	C CORP	0.	0.	100%	X	

**Part V Transactions With Related Organizations.** Complete if the organization answered "Yes" on Form 990, Part IV, line 34, 35b, or 36.

**Note:** Complete line 1 if any entity is listed in Parts II, III, or IV of this schedule.

**1** During the tax year, did the organization engage in any of the following transactions with one or more related organizations listed in Parts II-IV?

	Yes	No
<b>a</b> Receipt of (i) interest, (ii) annuities, (iii) royalties, or (iv) rent from a controlled entity .....		X
<b>b</b> Gift, grant, or capital contribution to related organization(s) .....	X	
<b>c</b> Gift, grant, or capital contribution from related organization(s) .....	X	
<b>d</b> Loans or loan guarantees to or for related organization(s) .....	X	
<b>e</b> Loans or loan guarantees by related organization(s) .....	X	
<b>f</b> Dividends from related organization(s) .....		X
<b>g</b> Sale of assets to related organization(s) .....		X
<b>h</b> Purchase of assets from related organization(s) .....		X
<b>i</b> Exchange of assets with related organization(s) .....		X
<b>j</b> Lease of facilities, equipment, or other assets to related organization(s) .....		X
<b>k</b> Lease of facilities, equipment, or other assets from related organization(s) .....		X
<b>l</b> Performance of services or membership or fundraising solicitations for related organization(s) .....	X	
<b>m</b> Performance of services or membership or fundraising solicitations by related organization(s) .....	X	
<b>n</b> Sharing of facilities, equipment, mailing lists, or other assets with related organization(s) .....	X	
<b>o</b> Sharing of paid employees with related organization(s) .....	X	
<b>p</b> Reimbursement paid to related organization(s) for expenses .....	X	
<b>q</b> Reimbursement paid by related organization(s) for expenses .....	X	
<b>r</b> Other transfer of cash or property to related organization(s) .....	X	
<b>s</b> Other transfer of cash or property from related organization(s) .....	X	

**2** If the answer to any of the above is "Yes," see the instructions for information on who must complete this line, including covered relationships and transaction thresholds.

(a) Name of related organization	(b) Transaction type (a-s)	(c) Amount involved	(d) Method of determining amount involved
(1) HUMANGOOD FOUNDATION SOUTH	B	236,168.	BOOK VALUE
(2) HUMANGOOD FOUNDATION SOUTH	C	264,911.	BOOK VALUE
(3)			
(4)			
(5)			
(6)			



**Part VII** Supplemental Information

Provide additional information for responses to questions on Schedule R. See instructions.

**PART II, IDENTIFICATION OF RELATED TAX-EXEMPT ORGANIZATIONS:**

**NAME, ADDRESS, AND EIN OF RELATED ORGANIZATION:**

HUMANGOOD FRESNO DBA THE TERRACES AT SAN JOAQUIN GARDENS

EIN: 26-0650298

6120 STONERIDGE MALL ROAD SUITE 100

PLEASANTON, CA 94588

**NAME, ADDRESS, AND EIN OF RELATED ORGANIZATION:**

HUMANGOOD WASHINGTON DBA JUDSON PARK RETIREMENT COMMUNITY

EIN: 91-1659735

6120 STONERIDGE MALL ROAD SUITE 100

PLEASANTON, CA 94588

**NAME OF RELATED ORGANIZATION:**

MANTUA PRESBYTERIAN APARTMENTS, INC.

DIRECT CONTROLLING ENTITY: PHILADELPHIA PRESBYTERY HOMES AND SERVICES FOR THE AGING

**NAME OF RELATED ORGANIZATION:**

PASCHALL SENIOR HOUSING, INC.

DIRECT CONTROLLING ENTITY: PHILADELPHIA PRESBYTERY HOMES AND SERVICES FOR THE AGING

**NAME OF RELATED ORGANIZATION:**

MAKEMIE AT WHITELAND

DIRECT CONTROLLING ENTITY: PHILADELPHIA PRESBYTERY HOMES AND SERVICES FOR THE AGING



**Part VII** Supplemental Information

Provide additional information for responses to questions on Schedule R. See instructions.

NAME OF RELATED ORGANIZATION:

PHILADELPHIA PRESBYTERY APARTMENTS OF MORRISVILLE, INC.

DIRECT CONTROLLING ENTITY: PHILADELPHIA PRESBYTERY HOMES AND SERVICES FOR THE AGING

NAME OF RELATED ORGANIZATION:

PRESBYTERIAN HOME AT 58TH STREET

DIRECT CONTROLLING ENTITY: PHILADELPHIA PRESBYTERY HOMES AND SERVICES FOR THE AGING

NAME OF RELATED ORGANIZATION:

HUMANGOOD PENNSYLVANIA FKA PHILADELPHIA PRESBYTERY HOMES, INC.

DIRECT CONTROLLING ENTITY: PHILADELPHIA PRESBYTERY HOMES AND SERVICES FOR THE AGING

NAME OF RELATED ORGANIZATION:

PHILADELPHIA PRESBYTERY APARTMENTS, INC.

DIRECT CONTROLLING ENTITY: PHILADELPHIA PRESBYTERY HOMES AND SERVICES FOR THE AGING

NAME OF RELATED ORGANIZATION:

GERMANTOWN INTERFAITH HOUSING, INC.

DIRECT CONTROLLING ENTITY: PHILADELPHIA PRESBYTERY HOMES AND SERVICES FOR THE AGING

NAME OF RELATED ORGANIZATION:

**Part VII** Supplemental Information

Provide additional information for responses to questions on Schedule R. See instructions.

GRACE COURT, INC.

DIRECT CONTROLLING ENTITY: PHILADELPHIA PRESBYTERY HOMES AND SERVICES FOR THE AGING

NAME OF RELATED ORGANIZATION:

PRESBYTERIAN APARTMENTS AT 58TH STREET, INC.

DIRECT CONTROLLING ENTITY: PHILADELPHIA PRESBYTERY HOMES AND SERVICES FOR THE AGING

NAME OF RELATED ORGANIZATION:

SOUTHWEST PHILADELPHIA PRESBYTERY APARTMENTS, INC.

DIRECT CONTROLLING ENTITY: PHILADELPHIA PRESBYTERY HOMES AND SERVICES FOR THE AGING

NAME OF RELATED ORGANIZATION:

TIOGA PRESBYTERIAN APARTMENTS, INC.

DIRECT CONTROLLING ENTITY: PHILADELPHIA PRESBYTERY HOMES AND SERVICES FOR THE AGING

NAME OF RELATED ORGANIZATION:

OLD CITY PRESBYTERIAN APARTMENTS, INC.

DIRECT CONTROLLING ENTITY: PHILADELPHIA PRESBYTERY HOMES AND SERVICES FOR THE AGING

NAME OF RELATED ORGANIZATION:

BALA PRESBYTERIAN HOME FOUNDATION

DIRECT CONTROLLING ENTITY: PHILADELPHIA PRESBYTERY HOMES AND SERVICES FOR THE AGING

**Part VII** Supplemental Information

Provide additional information for responses to questions on Schedule R. See instructions.

NAME OF RELATED ORGANIZATION:

PRESBYSERVICES

DIRECT CONTROLLING ENTITY: PHILADELPHIA PRESBYTERY HOMES AND SERVICES FOR THE AGING

NAME OF RELATED ORGANIZATION:

AVENUE OF THE ARTS PRESBYTERIAN-PSC APARTMENTS, INC.

DIRECT CONTROLLING ENTITY: PHILADELPHIA PRESBYTERY HOMES AND SERVICES FOR THE AGING

NAME OF RELATED ORGANIZATION:

SOUTHWEST PHILADELPHIA NEIGHBORHOOD RENEWAL PROGRAM

DIRECT CONTROLLING ENTITY: PHILADELPHIA PRESBYTERY HOMES AND SERVICES FOR THE AGING

NAME OF RELATED ORGANIZATION:

PHILADELPHIA PRESBYTERY HOMES WC TRUST

DIRECT CONTROLLING ENTITY: PHILADELPHIA PRESBYTERY HOMES AND SERVICES FOR THE AGING

NAME OF RELATED ORGANIZATION:

SOUTH PHILADELPHIA PRESBYTERIAN APARTMENTS, INC.

DIRECT CONTROLLING ENTITY: PHILADELPHIA PRESBYTERY HOMES AND SERVICES FOR THE AGING

NAME OF RELATED ORGANIZATION:

GREENWAY PRESBYTERIAN APARTMENTS, INC.

**Part VII** Supplemental Information

Provide additional information for responses to questions on Schedule R. See instructions.

DIRECT CONTROLLING ENTITY: PHILADELPHIA PRESBYTERY HOMES AND SERVICES FOR  
THE AGING