

IN THE WORKS 2019

ART

Featured Artists and Exhibits at Tacoma Art Museum
Featured Exhibits at the Washington History Museum, Tacoma
The Northwest School of Artists—Guy Anderson, Kenneth Callahan, Morris Graves and Mark Tobey.

HISTORY

Building the New Cascade Tunnel for Great Northern Railroad
Robert Kelly, Pacific Northwest Railroad Archives
Railroads—Historic Preservation, Miniature Railroads, Urban Railways, Working Applications
Development of the NW - Extracting Resources
(Timber, Mining, Fisheries)—MOHAI
NW Nordic Heritage—Nordic Museum, Ballard
The Judson Park Story—Its history, Its characters, Its evolution—Bill Painter

MUSIC

Seattle Symphony Concert Previews:
Michael Berry, UW Tacoma
Seattle Opera Previews-2019 Season
Carmen, The (R)evolution of Steve Jobs
Chopin-Composer & Performer
Introduction to Jazz Series— Spring 2019

POLITICAL SCIENCE

Current Events:
Jennifer Jones, Highline College
T. M. Sell, Highline College

WORLD RELIGION

Judaism—Its History and Practices

SCIENCE

Astronomy: Dana Rush, Green River College & UW Tacoma—Spring 2019
Space: Museum of Flight Speakers
Autism: Research Leading to Diagnosis, and Treatment; “The Spectrum”
Redondo Reef for Divers: UW School of Architecture
Fisheries: NOAA & Puget Sound Salmon Coalitio, Metro Clean Water Act
Artificial Intelligence & Robotics-Medical, Engineering, Personal Aspects:
UW, Paul Allen Institute, Microsoft
Climate Change: Robert Bindschadler—Spring 2019
Birding —The Pacific Flyway: Audubon Society

Judson Park's College of Intellectual Inspiration



Winter Schedule 2019

Classes and Lectures

January, February, March



COLLEGE OF INTELLECTUAL INSPIRATION (CII)

Recent Resident CII Survey

Thank you from the CII Committee to all residents who completed and returned the recent CII Interest Survey. Your responses are very important – besides giving you the opportunity to communicate your learning interests and preferences, the compiled responses provide valuable information to guide the committee in planning quarterly schedules throughout the coming year.

CII classes and lectures have been available at Judson Park for over two years, and because the committee is now more experienced than during earlier stages of the program's development, the recent survey was more specific and comprehensive. Since resident participants in the program have now experienced a broader range of learning opportunities, your survey responses were informed and meaningful. Watch for future programming that reflects your stated preferences and suggestions.

We appreciate the community's role in this resident-driven opportunity for continued learning and intellectual challenges at Judson Park.



L to R: Rena Hamburger, Jean Shefelveland, Douglas Chadd, Marcia Patrick, Aileen Huntsman, Forester Woodruff, Mary Alice Bueser, Suzanne Woodruff, Bill Kane, Joe Grillo, Shirley Peace (Chm),

CLASS REGISTRATION

If you would like to attend a CII class and are Not a Resident of Judson Park Retirement Community, please call the Receptionist at the **Front Desk 206-824-4000**. Residents may sign up for classes after Town Hall meetings or later at the Front Desk.

The College of Intellectual Inspiration (CII) at Judson Park is a resident-driven program of regular onsite lectures and classes presented by college level instructors and expert speakers. This life long learning program is made possible by the generous gift of anonymous donors.

CLASSES & LECTURES BY TOPIC

WINTER QUARTER 2019

January, February, March

Note: All Classes are held in the Rainier Chapel unless specified otherwise.

MUSIC

Seattle Symphony Preview

Michael Berry, UW Tacoma

Monday, March 18, 3:00 PM

“Bach” to the Drawing Board– An examination the history of arrangements and transcriptions of Bach's works, particularly by Stokowski.

Introduction to Jazz Series: The Roots of Jazz

Benjamin Thomas, Highline College & Professional Vibist

Monday, March 11, 2:00 PM

The Roots of Jazz - Come explore the conditions and influences that helped shape jazz in its birthplace, New Orleans. In this presentation, the second in our “Introduction to Jazz” series, we will listen to ragtime, blues, and popular music, and talk about Jelly Roll Morton, Louis Armstrong, Bessie Smith and the other artists that helped create the explosion of jazz in the early 20th century.

Seattle Opera Performance Preview

Jonathan Dean, Seattle Opera Dramaturg

Monday, January 14, 2:00 PM

Il Trovatore - Verdi's hot-blooded melodrama thrills with swift action, intense pathos, and multiple moments where singers shine. Set in a time of civil war, a mother's love clashes with a dark secret from her past as two rival soldiers feud for the favor of a noblewoman with a secret of her own. The abundance of masterful music had audiences shouting “Viva Verdi!” after its premiere in 1853.”

POLITICAL SCIENCE

Update on Plans and Projects in the City of Des Moines

Matt Pina, Mayor, and Michael Matthias, City Manager

Monday Evening, March 25, 7:00 PM

Current Events

Jennifer Jones, Highline College

Thursday, March 21, 3:00 PM

Current Events

T. M. Sell, Highline College

Thursday, January 17, February 21, 3:00 PM



CLASSES & LECTURES BY TOPIC WINTER QUARTER 2019

January, February, March

Note: All Classes are held in the Rainier Chapel unless specified otherwise.

INTERNATIONAL AFFAIRS

Immigration, A 2-Part Series

Chitra Hanstad, Executive Director of World Relief Seattle

Thursday March 7, 2:00 PM

Immigration Part 1: Global Migration – Where, Who and Why

The first presentation will take a look at the global migration and refugee crisis, both worldwide and locally. Differences between terms such as immigrant, refugee and asylee will be clarified; and, the most common sources for migration, its effects on women and girls, and innovative solutions on the global front will be discussed.

Thursday, March 14, 2:00 PM

Immigration Part 2: Welcoming Our Newest Neighbors –What is Being Done

The second presentation will emphasize current immigration trends in the greater Seattle area and what is being done on the local front. Andrew Hayes, Legal Services Manager for World Relief Seattle, will join Executive Director Chitra Hanstad to talk about legal implications and trends in the immigration system, both locally and nationally. A question and answer period will follow this session.

LITERATURE

Jane Eyre, Charlotte Brontë, and Victorian England

Molly Clark Hillard, Seattle U, Assoc. Professor, Department of English

Mondays, February 4, 11, 25 and March 4, 2:00 PM, in 3rd Floor Solarium

Enrollment will be limited. Sign up is required in advance.

There will be reading assignments. Attendance at all sessions is expected.

This class will study and discuss Charlotte Brontë's novel *Jane Eyre*. While this novel is today among the best-known and most-beloved of the Victorian classics, when it was published in 1847 it was considered shocking, morbid, and even blasphemous. So in addition to enjoying a rollicking good Gothic page-turner – perfect for winter, we will also be talking about some of the ideas that preoccupied Charlotte Brontë, her sisters, and certain other Victorians: the roles and rights of women, the power and corruption of money, England's empire, and religious hypocrisy.

MUSIC

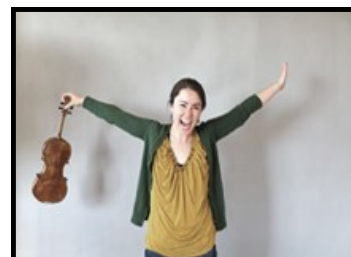
Seattle Symphony Preview

Michael Berry, UW Tacoma

Monday, January 28, 3:00 PM

When Classical Goes Pop - an emphasis on Caroline Shaw, her rise to fame, her performance activities, and her place in popular culture and a look at the early work of composer Shostakovich.

*Caroline Shaw:
Youngest Pulitzer Prize Winner*



CII CLASSES FOR JANUARY 2019

ALL CLASSES ARE HELD IN THE RAINIER CHAPEL UNLESS SPECIFIED OTHERWISE

SUN	MON	TUE	WED	THU	FRI	SAT
		1	2	3	4	5
6	7 HISTORY The Lewis & Clark Expedition: Part 1 Mr. Jefferson & Captain Lewis Junius Rochester, Lewis & Clark Foundation 2:00 PM	8	9	10 HISTORY The Lewis & Clark Expedition: Part 2 Plants & Animals of Lewis & Clark Junius Rochester, Lewis & Clark Foundation 2:00 PM	11	12
13	14 MUSIC Seattle Opera Preview: Il Trovatore Jonathan Dean, Dramaturg, Seattle Opera 2:00 PM	15	16	17 POLITICAL SCIENCE Current Affairs T. M. Sell Highline College 3:00 PM	18	19
20	21 Martin Luther King Jr. Day	22	23	24	25	26
27	28 MUSIC Seattle Symphony Preview: When Classical Goes Pop Michael Berry, UW Tacoma 3:00 PM	29	30	31		

CII CLASSES FOR FEBRUARY 2019

ALL CLASSES ARE HELD IN THE RAINIER CHAPEL UNLESS SPECIFIED OTHERWISE

SUN	MON	TUE	WED	THU	FRI	SAT
					1	2
3	4 LITERATURE Study of "Jane Eyre" Class 1 Molly Clark Hillard, Seattle U 2:00 PM 3rd Floor Solarium <i>Pre-registration required for series</i>	5	6	7 HISTORY The Highland Park & Lake Burien Railway Mike Bergman, National Railway Historical Society 2:00 PM	8	9
10	11 LITERATURE Study of "Jane Eyre" Class 2 Molly Clark Hillard, Seattle U 2:00 PM 3rd Floor Solarium <i>Pre-registration required for series</i>	12	13	14	15	16
17	18 Presidents' Day	19	20	17 POLITICAL SCIENCE Current Affairs Jennifer Jones or T. M. Sell Highline College 3:00 PM	22	23
24	25 LITERATURE Study of "Jane Eyre" Class 3 Molly Clark Hillard, Seattle U 2:00 PM 3rd Floor Solarium <i>Pre-registration required for series</i>	26	27	28		

CII LECTURERS



Benjamin Thomas, Ph.D., Highline College

Dr. Benjamin Thomas chairs the Music Department at Highline College and is one of the most in-demand jazz performers in the Pacific Northwest. As an educator he teaches music theory and history, and has given clinics and master classes at colleges across the country. Thomas received his Master of Music degree in Improvisation from the University of Michigan and his Doctor of Musical Art in Percussion Performance at UW. He is a professional vibist, leads jazz and tango ensembles, and performs with a wide variety of groups. As a composer, he has recorded three albums of original compositions for Origin Records. With a heavy performance schedule, he can be heard at many festivals and venues locally and in other locales.

CLASSES & LECTURES BY TOPIC

WINTER QUARTER 2019

January, February, March

Note: All Classes are held in the Rainier Chapel unless specified otherwise.

HISTORY

The Lewis & Clark Expedition

Junius Rochester, Lewis & Clark Trail Heritage Foundation

Monday, January 7, 2:00 PM

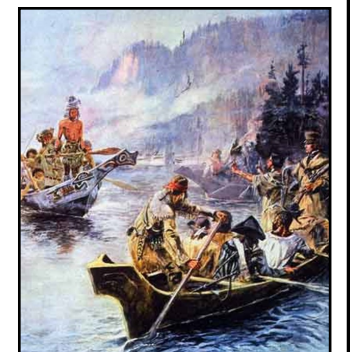
Part 1: "Mr. Jefferson & Captain Lewis"

An overview of the relationship between Thomas Jefferson and his secretary, Merriwether Lewis, lecture includes comments about the Lewis & Clark exploration and how it opened the West.

Thursday, January 10, 2:00 PM

Part 2: "The Plants and Animals of Lewis & Clark"

Explore the importance of animals, birds, fish and vegetation that were "discovered" by Lewis & Clark. Slides of specimens, along with illustrations from the Journals of the Expedition, illustrate this important aspect of the exploring the West.



The Highland Park & Lake Burien Railway

Mike Bergman, National Railway Historical Society (President of Tacoma Chapter)

Thursday, February 7, 2:00 PM

The only streetcar line to serve the Highline area, *The Highland Park & Lake Burien Railway* played a significant role in development of all the communities along its route. Follow its history from the initial development by real estate promoters, its sale to the City of Seattle, its role in the development of the Highline area, and its decline and eventual abandonment.



CII LECTURERS



Jennifer Jones, Ph.D., Highline College

Dr. Jones teaches courses on world regional geography, colonialism, the Middle East, and social policy. A Chicago native, Dr. Jones earned her undergraduate degree in political science at Carleton College in Minnesota. She then earned a Masters in public policy at the University of Chicago and a Doctorate in geography at the University of California, Berkeley. She served as a Peace Corps volunteer in Congo and the Dominican Republic. Dr. Jones loves traveling the world, knitting and reading mysteries. Dr. Jones will offer her perspective on Current Affairs January-June 2019, while T.M. Sell is lecturing in China.



Matt Pina & Michael Matthias, City of Des Moines

Mayor Matt Pina has been a member of City Council since 2014, and has been elected Mayor by the Council 4 times. Des Moines is his hometown. He went to Des Moines schools, Highline College, and earned his bachelor's degree from Central Washington University's satellite campus at Highline. He is a computer expert termed an "ethical hacker" to assure businesses that their computer systems are safe.



City Manager Michael Matthias was appointed City Manager in 2016 after serving 2 years as Assistant Manager. He holds 3 Masters Degrees: International Relations from the University of Cambridge, England; Urban Development from Oxford University, England; and Economics from UC Santa Cruz. Prior to coming to Des Moines, he managed the redevelopment of the former Olympia Brewery in Tumwater.



Junius Rochester, MBA, Lewis & Clark Trail Heritage Foundation

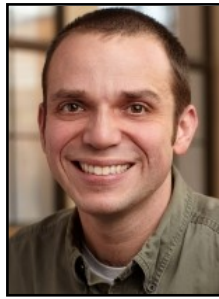
Junius Rochester, author of six books and numerous articles, is former regional history commentator at KUOW-FM, the NPR affiliate in Seattle. A native of the Pacific Northwest, he has traveled and studied the Columbia Gorge, Snake River, Alaska and surrounding country for over 40 years. Besides the Pacific Northwest Historians Guild, he is a member of the Washington State Historical Society, the Oregon Historical Society, the Alaska Historical Society, the Pioneer Association of the State of Washington (board member), Lewis & Clark Trail Heritage Foundation, Inc., and the Fort Clatsop Historical Association. In 2006, he received the Award of Merit from the American Association for State and Local History (AASLH) for educating the public about local history through newspapers, books, radio narratives, and presentations. He is listed among its experts by National Geographic Expeditions. A graduate of Whitman College, Mr. Rochester holds an MBA from Harvard Business School.

CII CLASSES FOR MARCH 2019

ALL CLASSES ARE HELD IN THE RAINIER CHAPEL UNLESS SPECIFIED OTHERWISE

SUN	MON	TUE	WED	THU	FRI	SAT
					1	2
3	4 LITERATURE Study of "Jane Eyre" Class 4 Molly Clark Hillard, Seattle U 2:00 PM 3rd Floor Solarium <i>Pre-registration required for series</i>	5	6	7 INTERNATIONAL AFFAIRS Immigration: Part 1 Global Migration Chitra Hanstad, World Relief Seattle 2:00 PM	8	9
10	11 MUSIC Introduction to Jazz Series: The Roots of Jazz Benjamin Thomas, Highline College & Jazz Performer 2:00 PM	12	13	14 INTERNATIONAL AFFAIRS Immigration: Part 2 Welcoming Our Newest Neighbors Chitra Hanstad & Andrew Hays, World Relief Seattle 2:00 PM	15	16
17	18 MUSIC Seattle Symphony Preview: "Bach" to the Drawing Board Michael Berry, UW Tacoma 3:00 PM	19	20	21 POLITICAL SCIENCE Current Events Jennifer Jones or T. M. Sell Highline College 3:00 PM	22	23
24	25 POLITICAL SCIENCE Current Events: Plans & Projects In the Works for Des Moines Mayor Matt Pina & City Manager Michael Matthias 7:00 PM	26	27	28	29	30 / 31

CII LECTURERS



Michael Berry, Ph.D., UW Tacoma

Dr. Berry is an artist-in-residence in Music Theory at the UW. He earned his doctorate from the Graduate Center of the City University of New York, his M.A. in Music Theory and B.A. in Double Bass Performance from Temple University. He has taught courses in harmony and aural skills, music theory, music appreciation, double bass, post-tonal analysis, and analysis and performance at UW and Texas Tech. He recently taught a series on "Listening to Rap," using his book by the same title. At Judson Park, he has taught "History of Rock Music in the Northwest," an overview of his book, and many Seattle Symphony Concert previews. Dr. Berry performs with the Tacoma and Federal Way Symphony Orchestras.



Mike Bergman, B.A., National Railway Historical Society

Mike Bergman is a retired transit planner from King County Metro and Sound Transit. While at Sound Transit, he managed operations planning and scheduling of bus and rail services, and provided guidance on historical preservation during construction of major transit projects.

Presently he serves as President of the Tacoma Chapter of the National Railway Historical Society. He volunteers to preserve the Pacific Northwest Railroad Archives.

A graduate of UW, Bergman holds a degree in Geography.



Jonathan Dean, B.A., Seattle Opera

Jonathan Dean wears many hats at Seattle Opera. Director of Public Programs and Media, (Dramaturg). He's author of the company's *Spotlight Series*, artistic administrator for school programs and a lecturer in their Young Artists' Program.

Dean hosts a Saturday opera broadcast on KING FM, with live broadcasts of Seattle Opera productions from McCaw Hall throughout the season.

He oversees the Opera's publications, but is best known for his supertitles. Dean came to Seattle Opera as a volunteer, cueing supertitles during performances. Dean has since done supertitles for more than 50 operas in various languages which are used by other companies.

His love of opera was inspired by his parents. He became addicted to the Saturday afternoon Met broadcasts, and maintains a fascination with Richard Wagner. Fluent in French, Italian and German, Dean holds a B.A. from Yale.

CII LECTURERS



Chitra Hanstad, M.A., World Relief Seattle

Chitra Hanstad serves as the Executive Director for World Relief Seattle, the largest refugee resettlement and services agency in Washington State. Over the years of her career involvement with both local and international non-profit organizations, she has worked in the U.S. cities of Seattle, Chicago, and Philadelphia, as well as cities in India, Romania, the Netherlands, and Mexico.

She is known locally as an active contributor and consultant, having served as a philanthropic advisor for Seattle Foundation and managing their scholarship program. She also lived in and worked with the Rainier Valley community, served as Director of Community Care at Jubilee REACH, was founder and Executive Director of Emerald City Jobs, and has consulted with Urban Impact, and many others. She has also been a member of many boards, and is currently on the Civic Council for the Masters degree program in International Studies at the University of Washington Jackson School, as well as the advisory board of Global Mental Health at UW.

Chitra holds Masters degrees in Marketing Communications and international Development, and most recently completed a course of study with the UW Evans School and the School of Business as a Raikes Foundation Scholar.



Andrew Hays, B.A., Immigration and Legal Services Manager

Andrew began his work at World Relief Seattle in 2010 as the In Kind Donations Coordinator, where he worked with refugees and the community to furnish families' first apartments in Washington. Previously, he also worked with individuals, churches, and businesses that invest financially in World Relief Seattle's efforts. Andrew now oversees the office's Immigration Legal Services. He holds a Bachelor's Degree in Sociology from Seattle Pacific University.



Molly Hillard, Ph.D., Seattle U

Molly Clark Hillard is Associate Professor of English at Seattle University, where she teaches classes in Victorian literature. She is also Director of the Student Research Program at Seattle U, for which she administers grants, organizes conferences, and runs an undergraduate research journal.

Dr. Hillard is the author of *Spellbound: The Fairy Tale and the Victorians* (Ohio State University Press). Her essays have appeared in several journals of literary criticism, and she is now working on her next book project, called *Literary Subjects*, about how 21st century novels draw upon Victorian literature. She received her Ph.D. from University of California, Davis. Prior to her joining the Seattle U faculty, she taught at Georgetown and the University of Southern Mississippi.